

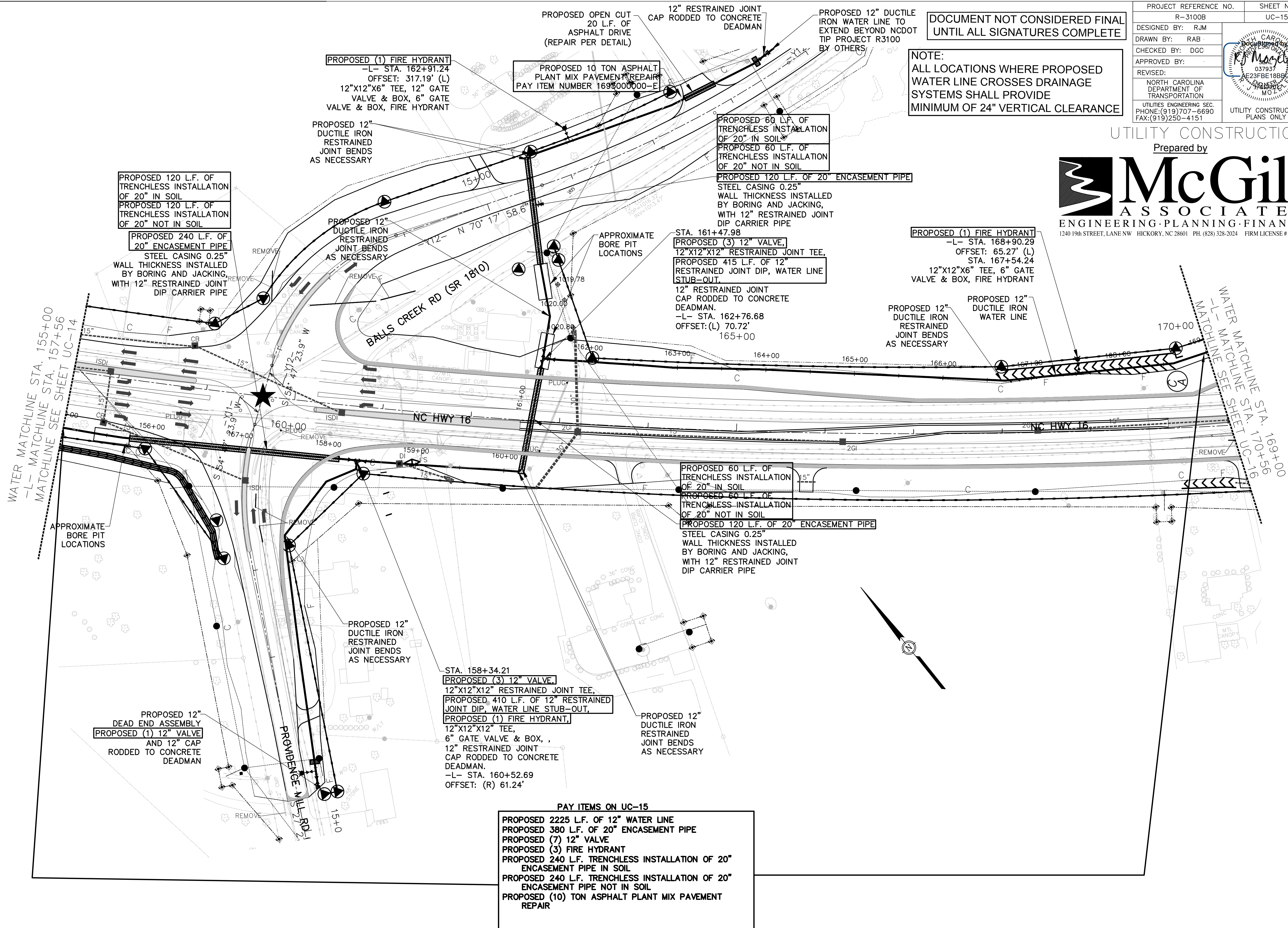
PROJECT REFERENCE NO. R-3100B	SHEET NO. UC-15
DESIGNED BY: RJM	
DRAWN BY: RAB	
CHECKED BY: DGC	
APPROVED BY:	
REVISED:	UTILITY CONSTRUCTION PLANS ONLY
NORTH CAROLINA DEPARTMENT OF TRANSPORTATION UTILITIES ENGINEERING SEC. PHONE: (919) 707-6690 FAX: (919) 250-4151	

DOCUMENT NOT CONSIDERED FINAL UNTIL ALL SIGNATURES COMPLETE

NOTE: ALL LOCATIONS WHERE PROPOSED WATER LINE CROSSES DRAINAGE SYSTEMS SHALL PROVIDE MINIMUM OF 24" VERTICAL CLEARANCE

UTILITY CONSTRUCTION

Prepared by



WATER MATCHLINE STA. 155+00  
 -L- MATCHLINE STA. 157+56  
 MATCHLINE SEE SHEET UC-14

WATER MATCHLINE STA. 170+00  
 -L- MATCHLINE SEE SHEET UC-16  
 MATCHLINE STA. 169+00

PROPOSED 12" DEAD END ASSEMBLY  
 PROPOSED (1) 12" VALVE AND 12" CAP  
 RODDED TO CONCRETE DEADMAN

PROPOSED (1) FIRE HYDRANT  
 -L- STA. 162+91.24  
 OFFSET: 317.19' (L)  
 12"X12"X6" TEE, 12" GATE VALVE & BOX, 6" GATE VALVE & BOX, FIRE HYDRANT

PROPOSED 10 TON ASPHALT PLANT MIX PAVEMENT REPAIR  
 PAY ITEM NUMBER 169300000-E

PROPOSED 60 L.F. OF TRENCHLESS INSTALLATION OF 20" IN SOIL  
 PROPOSED 60 L.F. OF TRENCHLESS INSTALLATION OF 20" NOT IN SOIL

PROPOSED 120 L.F. OF 20" ENCASEMENT PIPE  
 STEEL CASING 0.25" WALL THICKNESS INSTALLED BY BORING AND JACKING, WITH 12" RESTRAINED JOINT DIP CARRIER PIPE

STA. 161+47.98  
 PROPOSED (3) 12" VALVE, 12"X12"X12" RESTRAINED JOINT TEE,  
 PROPOSED 415 L.F. OF 12" RESTRAINED JOINT DIP, WATER LINE STUB-OUT,  
 12" RESTRAINED JOINT CAP RODDED TO CONCRETE DEADMAN.  
 -L- STA. 162+76.68  
 OFFSET: (L) 70.72'  
 165+00

PROPOSED (1) FIRE HYDRANT  
 -L- STA. 168+90.29  
 OFFSET: 65.27' (L)  
 STA. 167+54.24  
 12"X12"X6" TEE, 6" GATE VALVE & BOX, FIRE HYDRANT

PROPOSED 60 L.F. OF TRENCHLESS INSTALLATION OF 20" IN SOIL  
 PROPOSED 60 L.F. OF TRENCHLESS INSTALLATION OF 20" NOT IN SOIL  
 PROPOSED 120 L.F. OF 20" ENCASEMENT PIPE  
 STEEL CASING 0.25" WALL THICKNESS INSTALLED BY BORING AND JACKING, WITH 12" RESTRAINED JOINT DIP CARRIER PIPE

STA. 158+34.21  
 PROPOSED (3) 12" VALVE, 12"X12"X12" RESTRAINED JOINT TEE,  
 PROPOSED 410 L.F. OF 12" RESTRAINED JOINT DIP, WATER LINE STUB-OUT,  
 PROPOSED (1) FIRE HYDRANT, 12"X12"X12" TEE,  
 6" GATE VALVE & BOX, 12" RESTRAINED JOINT CAP RODDED TO CONCRETE DEADMAN.  
 -L- STA. 160+52.69  
 OFFSET: (R) 61.24'

**PAY ITEMS ON UC-15**  
 PROPOSED 2225 L.F. OF 12" WATER LINE  
 PROPOSED 380 L.F. OF 20" ENCASEMENT PIPE  
 PROPOSED (7) 12" VALVE  
 PROPOSED (3) FIRE HYDRANT  
 PROPOSED 240 L.F. TRENCHLESS INSTALLATION OF 20" ENCASEMENT PIPE IN SOIL  
 PROPOSED 240 L.F. TRENCHLESS INSTALLATION OF 20" ENCASEMENT PIPE NOT IN SOIL  
 PROPOSED (10) TON ASPHALT PLANT MIX PAVEMENT REPAIR

NO CONSTRUCTION SHALL BE PERMITTED WITHOUT THE SIGNATURE OF THE ENGINEER OF RECORD