

PROJECT REFERENCE NO.	SHEET NO.
R-3100B	UC-13
DESIGNED BY: RJM	
DRAWN BY: RAB	
CHECKED BY: DGC	
APPROVED BY:	
REVISED:	UTILITY CONSTRUCTION PLANS ONLY
NORTH CAROLINA DEPARTMENT OF TRANSPORTATION UTILITIES ENGINEERING SEC. PHONE: (919) 707-6690 FAX: (919) 250-4151	

DOCUMENT NOT CONSIDERED FINAL UNTIL ALL SIGNATURES COMPLETE

NOTE: ALL LOCATIONS WHERE PROPOSED WATER LINE CROSSES DRAINAGE SYSTEMS SHALL PROVIDE MINIMUM OF 24" VERTICAL CLEARANCE

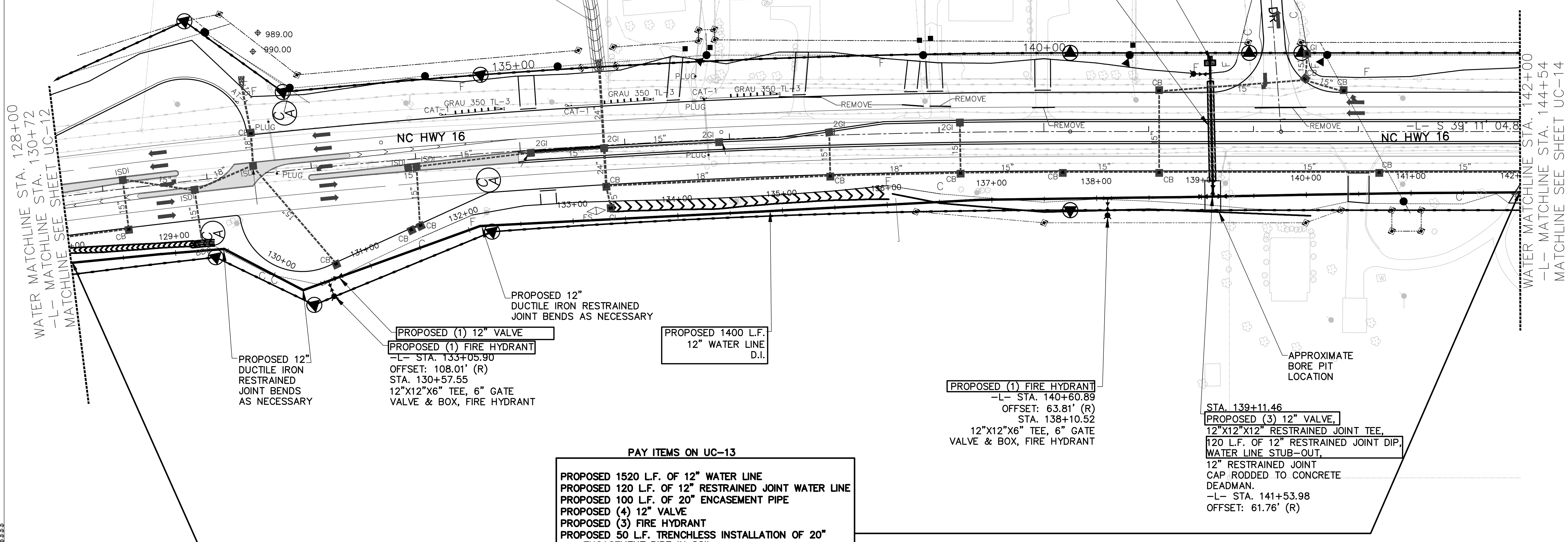
PROPOSED 12" DEAD END ASSEMBLY
PROPOSED (1) 12" VALVE,
PROPOSED (1) 6" VALVE,
PROPOSED (1) FIRE HYDRANT
12" CAP RODDED TO CONCRETE DEADMAN

PROPOSED 50 L.F. OF TRENCHLESS INSTALLATION OF 20" IN SOIL
PROPOSED 50 L.F. OF TRENCHLESS INSTALLATION OF 20" NOT IN SOIL

PROPOSED 100 L.F. OF 20" ENCASEMENT PIPE
STEEL CASING 0.25" WALL THICKNESS INSTALLED BY BORING AND JACKING, WITH 12" RESTRAINED JOINT DIP CARRIER PIPE

UTILITY CONSTRUCTION

Prepared by



WATER MATCHLINE STA. 128+00
-L- MATCHLINE STA. 130+72
MATCHLINE SEE SHEET UC-12

WATER MATCHLINE STA. 142+00
-L- MATCHLINE STA. 144+54
MATCHLINE SEE SHEET UC-14

PROPOSED 12" DUCTILE IRON RESTRAINED JOINT BENDS AS NECESSARY

PROPOSED (1) 12" VALVE
PROPOSED (1) FIRE HYDRANT
-L- STA. 133+05.90
OFFSET: 108.01' (R)
STA. 130+57.55
12"X12"X6" TEE, 6" GATE VALVE & BOX, FIRE HYDRANT

PROPOSED 12" DUCTILE IRON RESTRAINED JOINT BENDS AS NECESSARY

PROPOSED 1400 L.F. 12" WATER LINE D.I.

PROPOSED (1) FIRE HYDRANT
-L- STA. 140+60.89
OFFSET: 63.81' (R)
STA. 138+10.52
12"X12"X6" TEE, 6" GATE VALVE & BOX, FIRE HYDRANT

STA. 139+11.46
PROPOSED (3) 12" VALVE,
12"X12"X12" RESTRAINED JOINT TEE,
120 L.F. OF 12" RESTRAINED JOINT DIP,
WATER LINE STUB-OUT,
12" RESTRAINED JOINT CAP RODDED TO CONCRETE DEADMAN.
-L- STA. 141+53.98
OFFSET: 61.76' (R)

PAY ITEMS ON UC-13

PROPOSED 1520 L.F. OF 12" WATER LINE
PROPOSED 120 L.F. OF 12" RESTRAINED JOINT WATER LINE
PROPOSED 100 L.F. OF 20" ENCASEMENT PIPE
PROPOSED (4) 12" VALVE
PROPOSED (3) FIRE HYDRANT
PROPOSED 50 L.F. TRENCHLESS INSTALLATION OF 20" ENCASEMENT PIPE IN SOIL
PROPOSED 50 L.F. TRENCHLESS INSTALLATION OF 20" ENCASEMENT PIPE NOT IN SOIL

NO SYSTEMS SHALL BE DISRUPTED