

PROJECT REFERENCE NO.	SHEET NO.
R-3100B	UC-12
DESIGNED BY: RJM	
DRAWN BY: RAB	
CHECKED BY: DGC	
APPROVED BY:	
REVISED:	
NORTH CAROLINA DEPARTMENT OF TRANSPORTATION	
UTILITIES ENGINEERING SEC. PHONE: (919) 707-6690 FAX: (919) 250-4151	
UTILITY CONSTRUCTION PLANS ONLY	

DOCUMENT NOT CONSIDERED FINAL
UNTIL ALL SIGNATURES COMPLETE

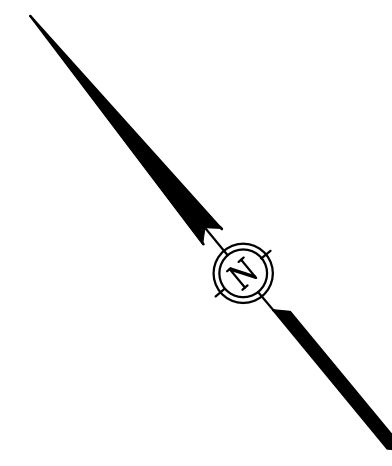
NOTE:
ALL LOCATIONS WHERE PROPOSED
WATER LINE CROSSES DRAINAGE
SYSTEMS SHALL PROVIDE
MINIMUM OF 24" VERTICAL CLEARANCE

UTILITY CONSTRUCTION

Prepared by

McGill
ASSOCIATES
ENGINEERING · PLANNING · FINANCE
1240 19th STREET, LANE NW HICKORY, NC 28601 PH. (828) 328-2024 FIRM LICENSE # C-0459

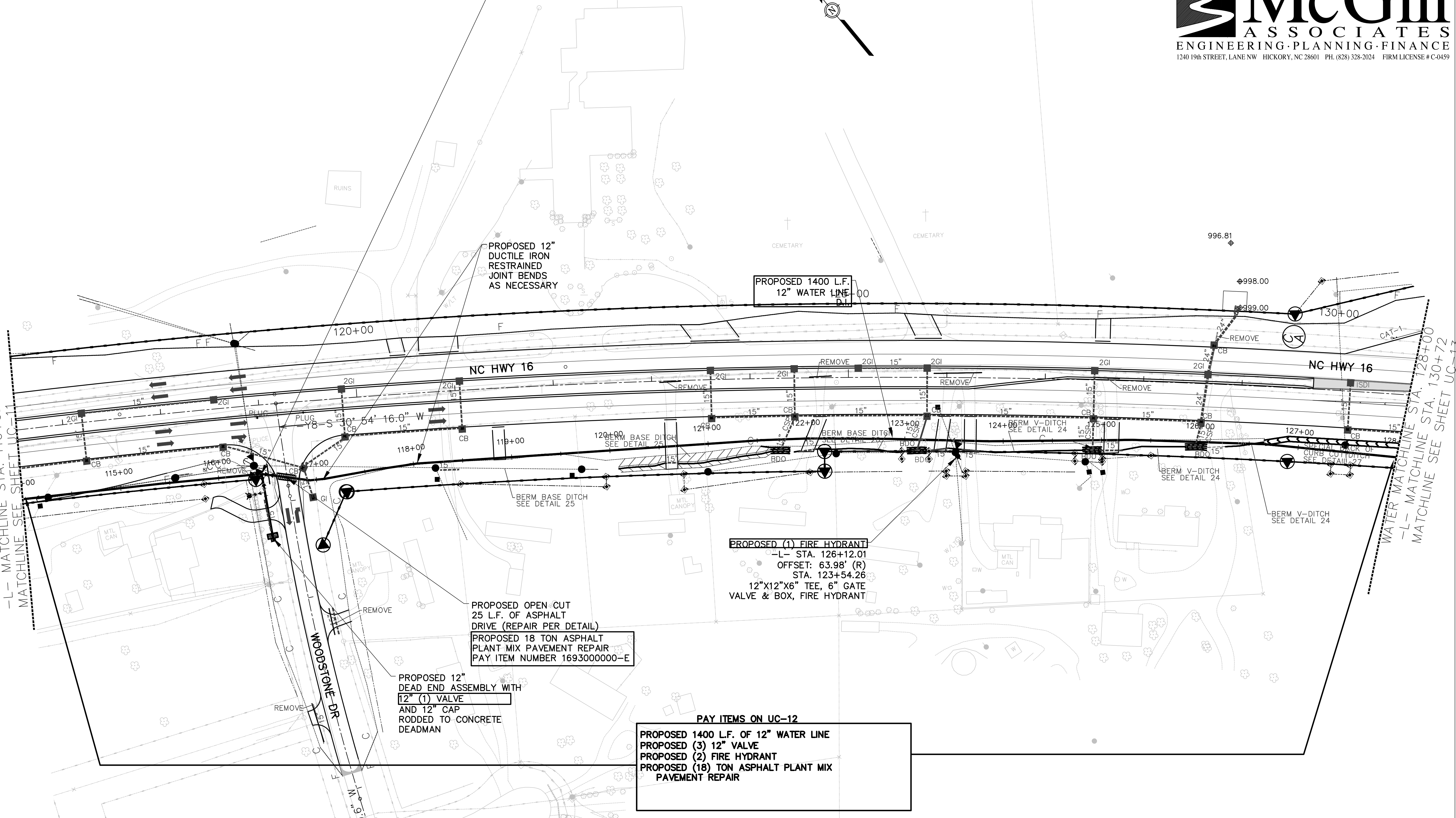
STA. 116+44.25
PROPOSED (3) 12" VALVE,
12"X12"X12" RESTRAINED JOINT TEE,
PROPOSED 70 L.F. OF 12" RESTRAINED
JOINT DIP, WATER LINE STUB-OUT,
PROPOSED (1) FIRE HYDRANT,
 12" RESTRAINED JOINT
 CAP RODDED TO CONCRETE
 DEADMAN.
 -L- STA. 118+96.48
 OFFSET: 70.03' (R)



WATER MATCHLINE STA. 114+00
 -L- MATCHLINE STA. 116+52
 MATCHLINE SEE SHEET UC-11

WATER MATCHLINE STA. 128+00
 -L- MATCHLINE STA. 130+72
 MATCHLINE SEE SHEET UC-13

 SYSTEMS



PROPOSED 12"
 DUCTILE IRON
 RESTRAINED
 JOINT BENDS
 AS NECESSARY

PROPOSED 1400 L.F.
 12" WATER LINE

PROPOSED (1) FIRE HYDRANT
 -L- STA. 126+12.01
 OFFSET: 63.98' (R)
 STA. 123+54.26
 12"X12"X6" TEE, 6" GATE
 VALVE & BOX, FIRE HYDRANT

PROPOSED OPEN CUT
 25 L.F. OF ASPHALT
 DRIVE (REPAIR PER DETAIL)
 PROPOSED 18 TON ASPHALT
 PLANT MIX PAVEMENT REPAIR
 PAY ITEM NUMBER 1693000000-E

PROPOSED 12"
 DEAD END ASSEMBLY WITH
 12" (1) VALVE
 AND 12" CAP
 RODDED TO CONCRETE
 DEADMAN

PAY ITEMS ON UC-12
 PROPOSED 1400 L.F. OF 12" WATER LINE
 PROPOSED (3) 12" VALVE
 PROPOSED (2) FIRE HYDRANT
 PROPOSED (18) TON ASPHALT PLANT MIX
 PAVEMENT REPAIR