

5/14/99

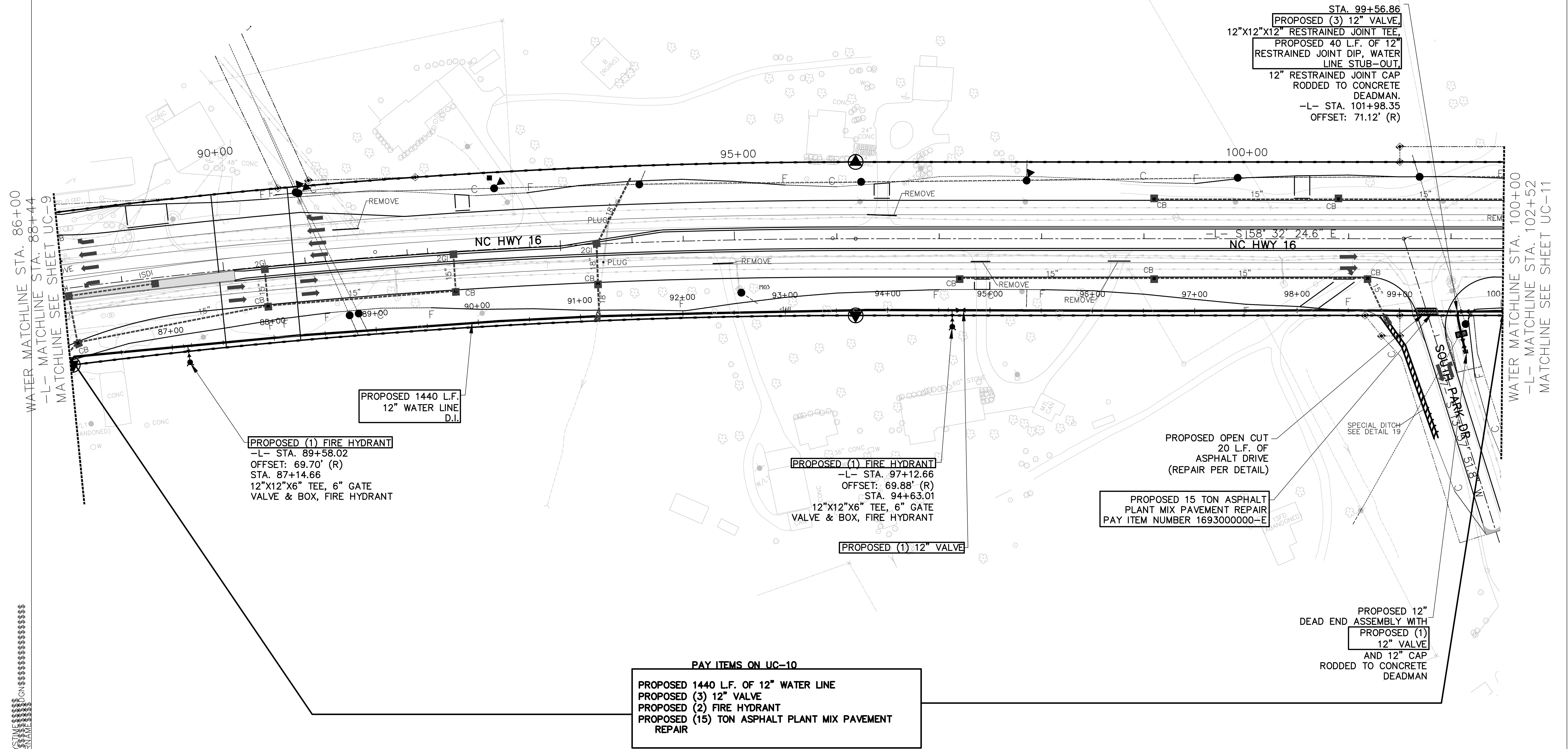
PROJECT REFERENCE NO. R-3100B	SHEET NO. UC-10
DESIGNED BY: RJM	
DRAWN BY: RAB	
CHECKED BY: DGC	
APPROVED BY:	
REVISED:	
NORTH CAROLINA DEPARTMENT OF TRANSPORTATION UTILITIES ENGINEERING SEC. PHONE: (919) 707-6690 FAX: (919) 250-4151	
UTILITY CONSTRUCTION PLANS ONLY	

DOCUMENT NOT CONSIDERED FINAL
UNTIL ALL SIGNATURES COMPLETE

NOTE:
ALL LOCATIONS WHERE PROPOSED
WATER LINE CROSSES DRAINAGE
SYSTEMS SHALL PROVIDE
MINIMUM OF 24" VERTICAL CLEARANCE

UTILITY CONSTRUCTION

Prepared by



STA. 99+56.86
PROPOSED (3) 12" VALVE,
 12"x12"x12" RESTRAINED JOINT TEE,
PROPOSED 40 L.F. OF 12"
 RESTRAINED JOINT DIP, WATER
 LINE STUB-OUT
 12" RESTRAINED JOINT CAP
 RODDED TO CONCRETE
 DEADMAN.
 -L- STA. 101+98.35
 OFFSET: 71.12' (R)

PROPOSED (1) FIRE HYDRANT
 -L- STA. 89+58.02
 OFFSET: 69.70' (R)
 STA. 87+14.66
 12"x12"x6" TEE, 6" GATE
 VALVE & BOX, FIRE HYDRANT

PROPOSED (1) FIRE HYDRANT
 -L- STA. 97+12.66
 OFFSET: 69.88' (R)
 STA. 94+63.01
 12"x12"x6" TEE, 6" GATE
 VALVE & BOX, FIRE HYDRANT

PROPOSED (1) 12" VALVE

PROPOSED 15 TON ASPHALT
 PLANT MIX PAVEMENT REPAIR
 PAY ITEM NUMBER 1693000000-E

PROPOSED 12"
 DEAD END ASSEMBLY WITH
PROPOSED (1)
 12" VALVE
 AND 12" CAP
 RODDED TO CONCRETE
 DEADMAN

PAY ITEMS ON UC-10
 PROPOSED 1440 L.F. OF 12" WATER LINE
 PROPOSED (3) 12" VALVE
 PROPOSED (2) FIRE HYDRANT
 PROPOSED (15) TON ASPHALT PLANT MIX PAVEMENT
 REPAIR

WATER MATCHLINE STA. 86+00
 -L- MATCHLINE STA. 88+44
 MATCHLINE SEE SHEET UC-9

WATER MATCHLINE STA. 100+00
 -L- MATCHLINE STA. 102+52
 MATCHLINE SEE SHEET UC-11

SYSTEMS
 ON
 SUBSENA