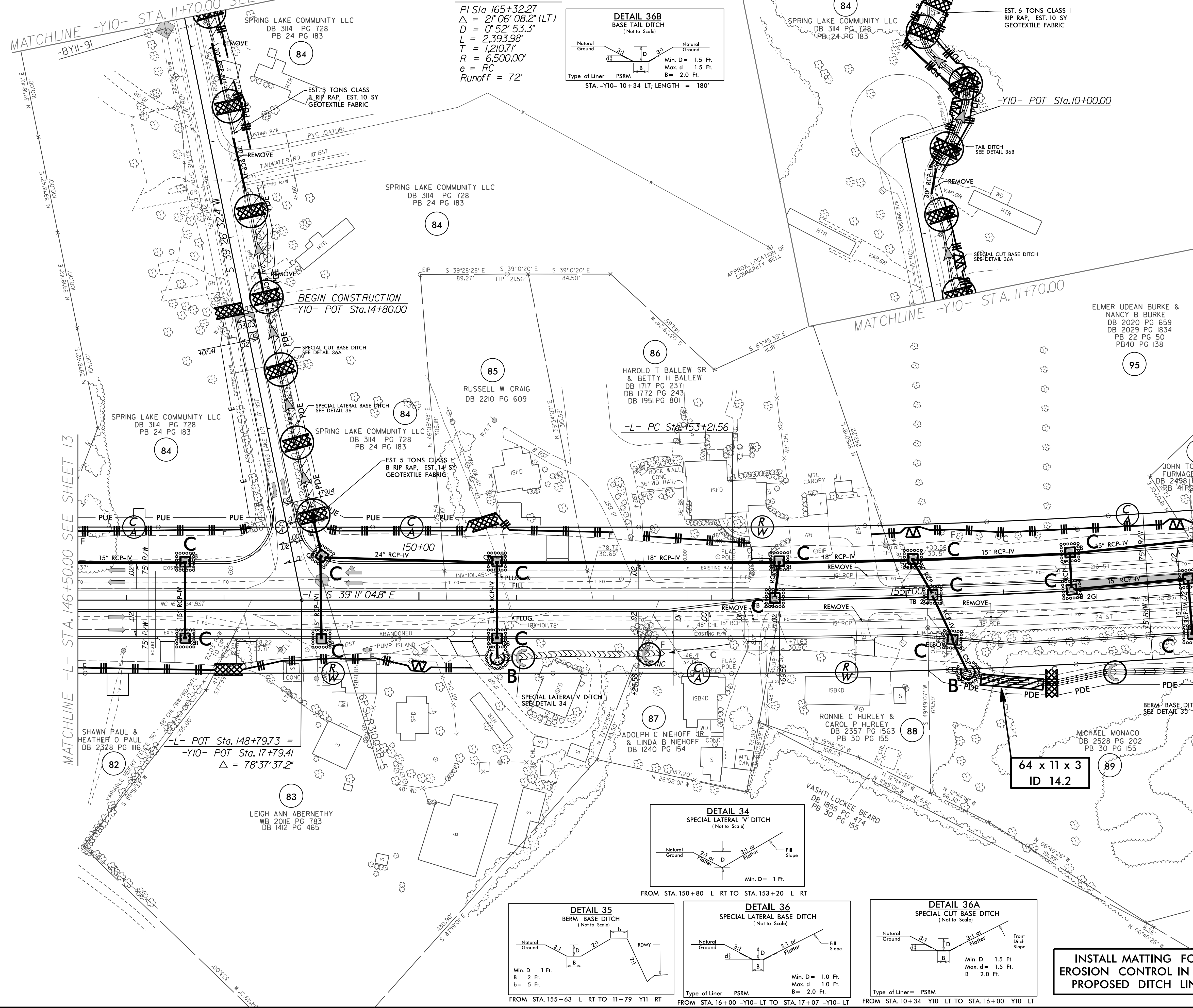
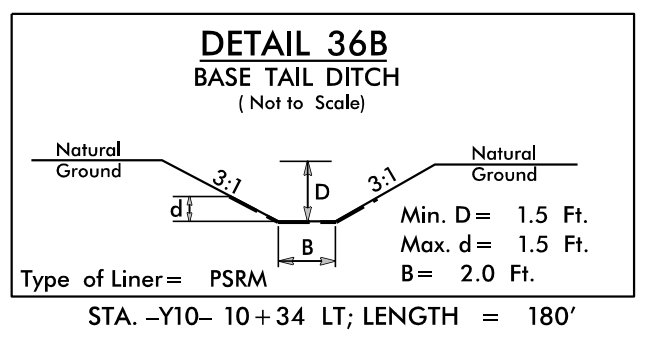


PROJECT REFERENCE NO.	SHEET NO.
R-3100B	EC-28/CONSTJ4
R/W SHEET NO.	HYDRAULICS ENGINEER
ROADWAY DESIGN ENGINEER	

NAD 83 / NSRS 2007

MATCHLINE -Y10- STA. 11+70.00 SEE INSET  
-BY11-91

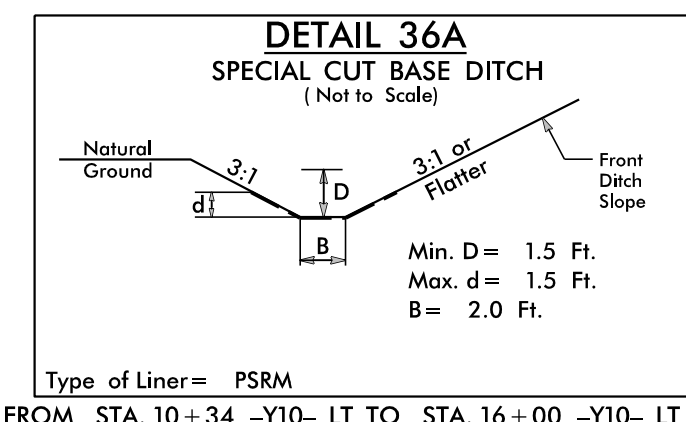
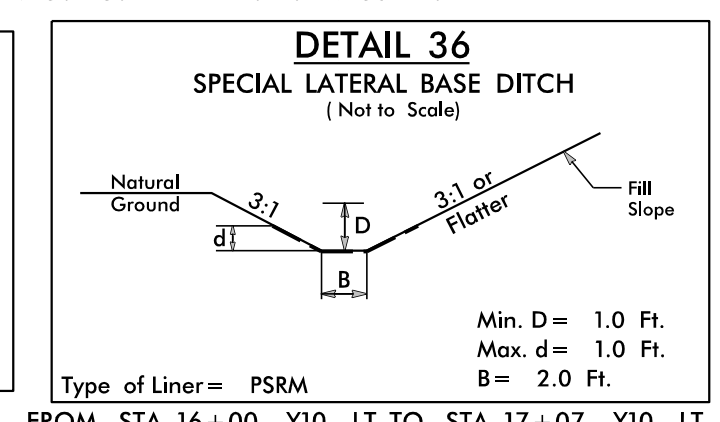
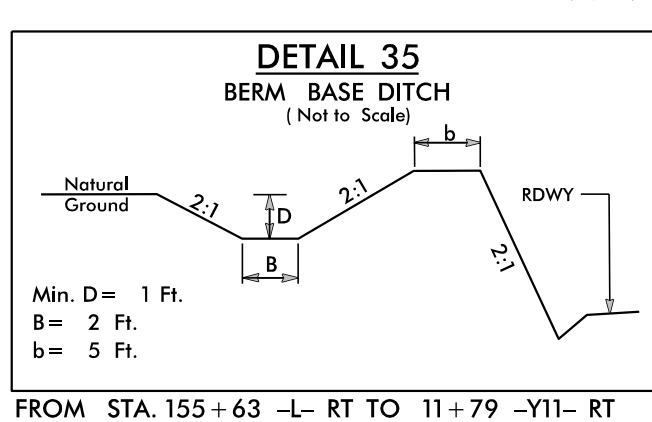
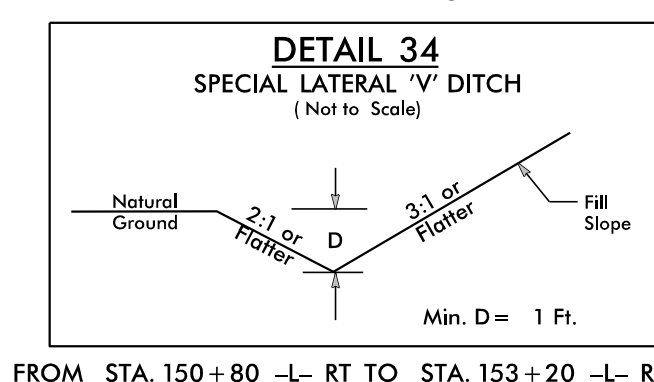
-L-  
PI Sta 165+32.27  
 $\Delta = 21'06''08.2''$  (LT)  
 $D = 0'52''53.3''$   
 $L = 2,393.98'$   
 $T = 1,210.71'$   
 $R = 6,500.00'$   
 $e = RC$   
Runoff = 72'



ELMER UDEAN BURKE &  
NANCY B BURKE  
DB 2020 PG 659  
DB 2029 PG 1834  
PB 22 PG 50  
PB40 PG 138

64 x 11 x 3  
ID 14.2

FOR -L- PROFILE SEE SHEET 23  
FOR -Y10- PROFILE SEE SHEET 26



INSTALL MATTING FOR  
EROSION CONTROL IN THE  
PROPOSED DITCH LINE.

MATCHLINE -L- STA. 146+50.00 SEE SHEET 13

MATCHLINE -L- STA. 158+30.00 SEE SHEET 15

SHAWN PAUL &  
HEATHER O PAUL  
DB 2328 PG 116  
-L- POT Sta. 148+79.73 =  
-Y10- POT Sta. 17+79.41  
 $\Delta = 78'37''37.2''$

LEIGH ANN ABERNETHY  
WB 2011 PG 783  
DB 1412 PG 465

RONNIE C HURLEY &  
CAROL P HURLEY  
DB 2357 PG 1563  
PB 30 PG 155

MICHAEL MONACO  
DB 2528 PG 202  
PB 30 PG 155

VASHITI LOCKEE BEARD  
DB 1855 PG 474  
PB 30 PG 155

JOHN TOLAR  
FURMAGE JR  
DB 2498 PG 621  
PB 41 PG 184

HAROLD T BALLEW SR  
& BETTY H BALLEW  
DB 1717 PG 237  
DB 1772 PG 243  
DB 1951 PG 801

RUSSELL W CRAIG  
DB 2210 PG 609

SPRING LAKE COMMUNITY LLC  
DB 3114 PG 728  
PB 24 PG 183

SPRING LAKE COMMUNITY LLC  
DB 3114 PG 728  
PB 24 PG 183

SPRING LAKE COMMUNITY LLC  
DB 3114 PG 728  
PB 24 PG 183

EST. 5 TONS CLASS  
B RIP RAP, EST. 14 SY  
GEOTEXTILE FABRIC

EST. 3 TONS CLASS  
B RIP RAP, EST. 10 SY  
GEOTEXTILE FABRIC

EST. 6 TONS CLASS I  
RIP RAP, EST. 10 SY  
GEOTEXTILE FABRIC

SPRING LAKE COMMUNITY LLC  
DB 3114 PG 728  
PB 24 PG 183

SPRING LAKE COMMUNITY LLC  
DB 3114 PG 728  
PB 24 PG 183

BEGIN CONSTRUCTION  
-Y10- POT Sta. 14+80.00

MATCHLINE -Y10- STA. 11+70.00

-L- PC Sta. 153+21.56

FROM STA. 155+63 -L- RT TO 11+79 -Y11- RT

FROM STA. 16+00 -Y10- LT TO STA. 17+07 -Y10- LT

FROM STA. 10+34 -Y10- LT TO STA. 16+00 -Y10- LT