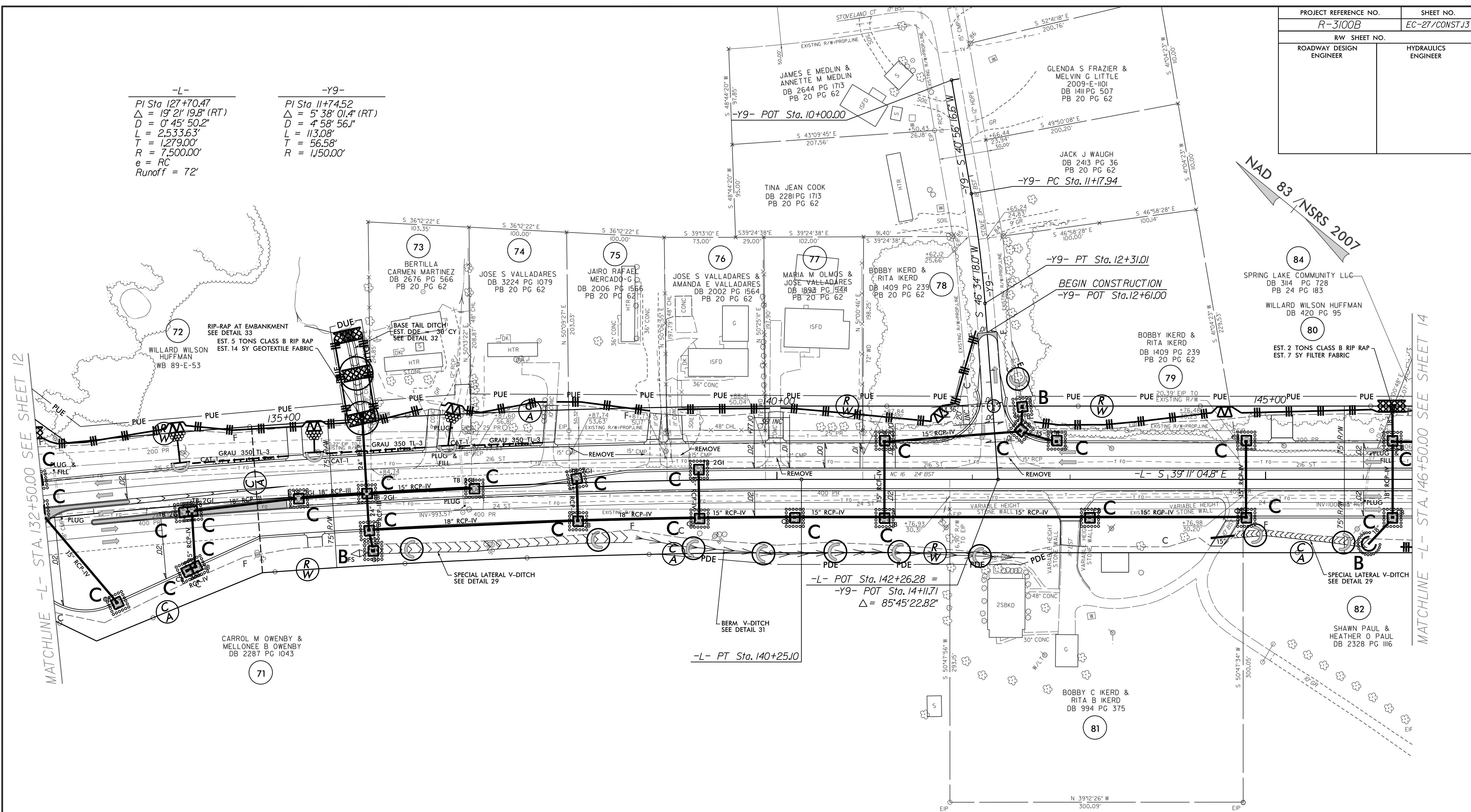


PROJECT REFERENCE NO.	SHEET NO.
R-3100B	EC-27/CONST J3
RW SHEET NO.	
ROADWAY DESIGN ENGINEER	HYDRAULICS ENGINEER

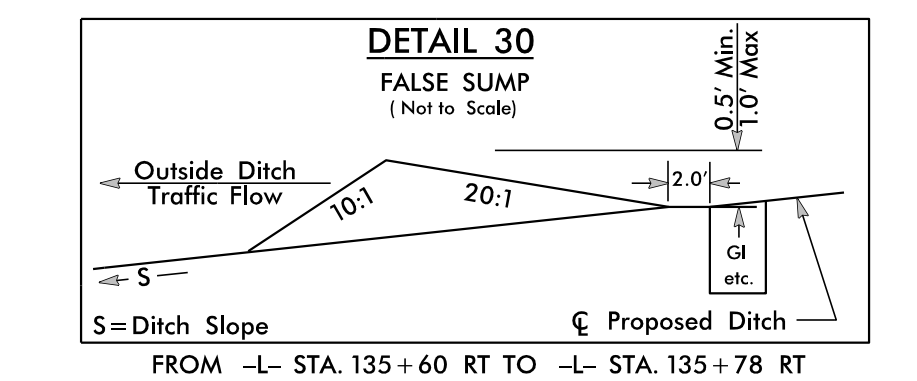
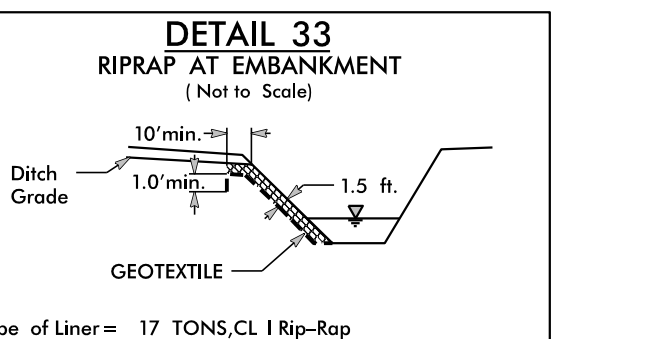
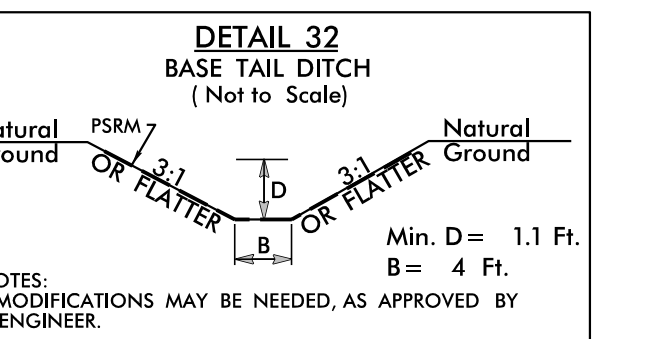
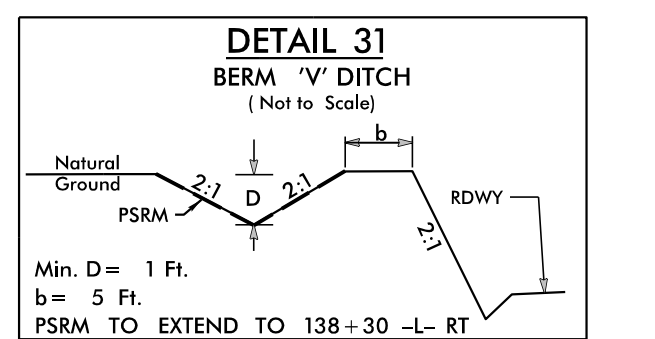
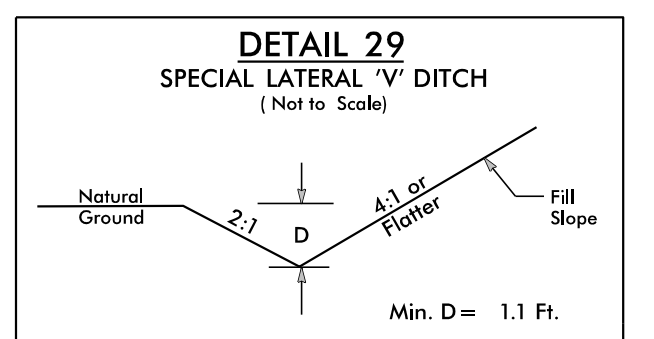
-L-
 PI Sta 127+70.47
 $\Delta = 19^{\circ} 21' 19.8''$ (RT)
 $D = 0' 45' 50.2''$
 $L = 2,533.63'$
 $T = 1,279.00'$
 $R = 7,500.00'$
 $e = RC$
 Runoff = 72'

-Y9-
 PI Sta 11+74.52
 $\Delta = 5^{\circ} 38' 01.4''$ (RT)
 $D = 4' 58' 56.1''$
 $L = 113.08'$
 $T = 56.58'$
 $R = 1,150.00'$



MATCHLINE -L- STA. 132+50.00 SEE SHEET 12

MATCHLINE -L- STA. 146+50.00 SEE SHEET 14



INSTALL MATTING FOR EROSION CONTROL IN THE PROPOSED DITCH LINE.

Place Matting for Erosion Control on Slope as Work Allows. Sta. 134+00 to Sta. 138+00 -L- LT

FOR -L- PROFILE SEE SHEET 22
 FOR -Y9- PROFILE SEE SHEET 26