

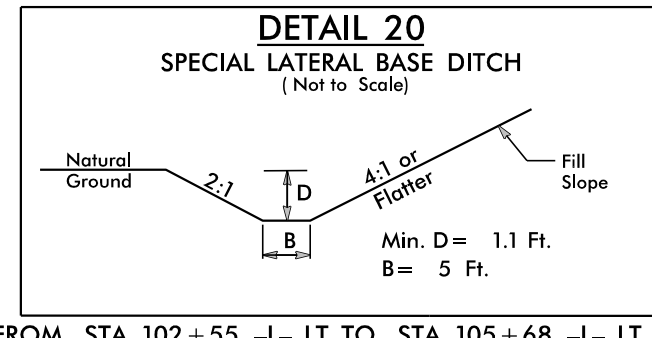
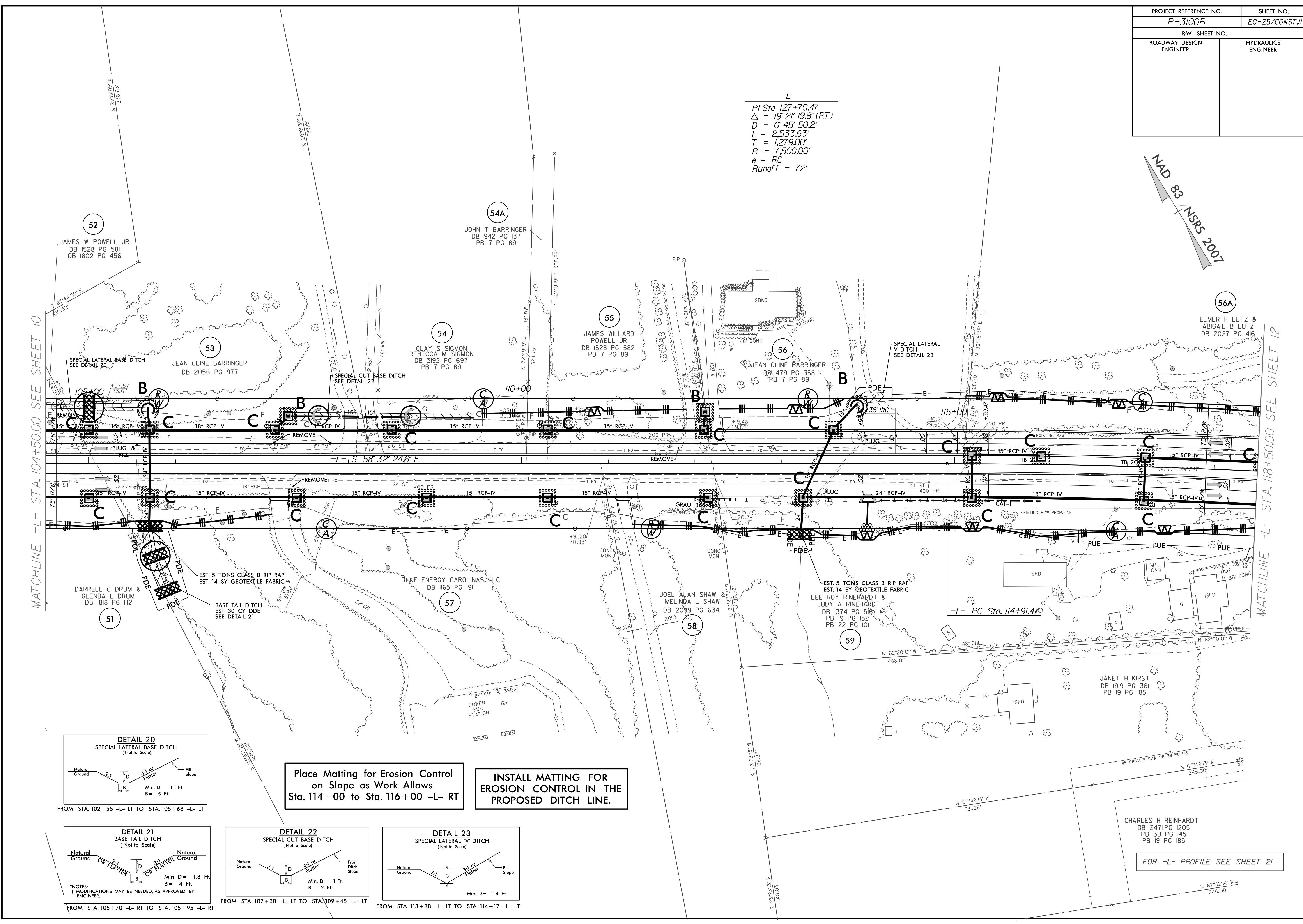
PROJECT REFERENCE NO.	SHEET NO.
R-3100B	EC-25/CONST.II
RW SHEET NO.	
ROADWAY DESIGN ENGINEER	HYDRAULICS ENGINEER

NAD 83 / NSRS 2007

-L-
 PI Sta 127+70.47
 $\Delta = 19^{\circ} 21' 19.8" (RT)$
 $D = 0^{\circ} 45' 50.2"$
 $L = 2,533.63'$
 $T = 1,279.00'$
 $R = 7,500.00'$
 $e = RC$
 $Runoff = 72'$

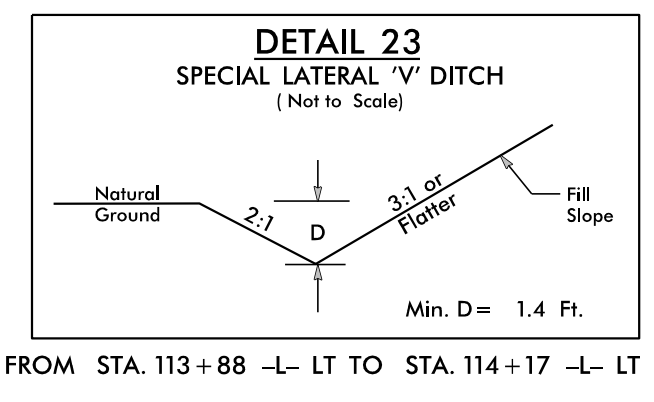
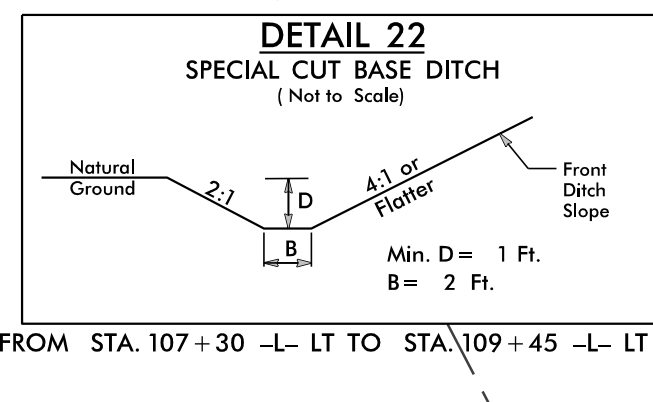
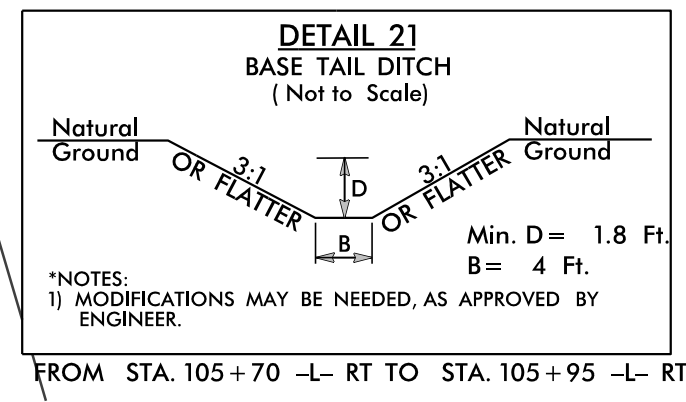
MATCHLINE -L- STA. 104+50.00 SEE SHEET 10

MATCHLINE -L- STA. 118+50.00 SEE SHEET 12



Place Matting for Erosion Control on Slope as Work Allows.
Sta. 114+00 to Sta. 116+00 -L- RT

INSTALL MATTING FOR EROSION CONTROL IN THE PROPOSED DITCH LINE.



FOR -L- PROFILE SEE SHEET 21