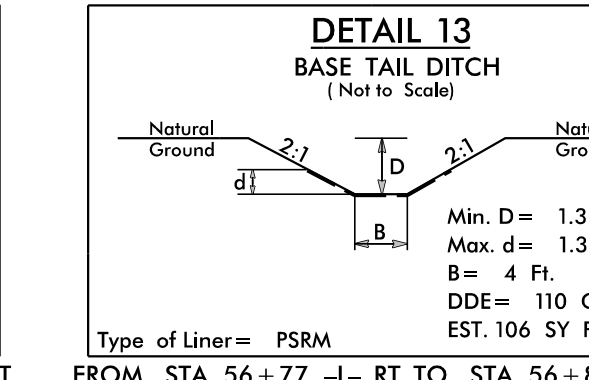
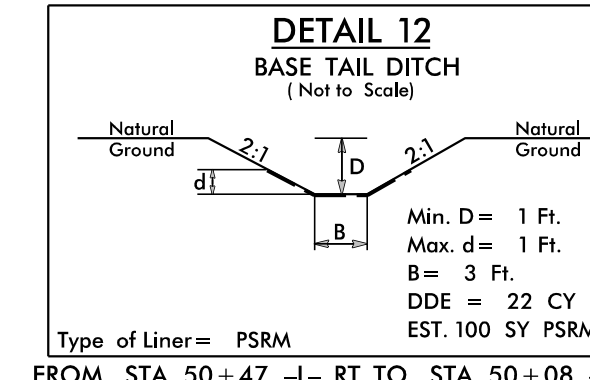
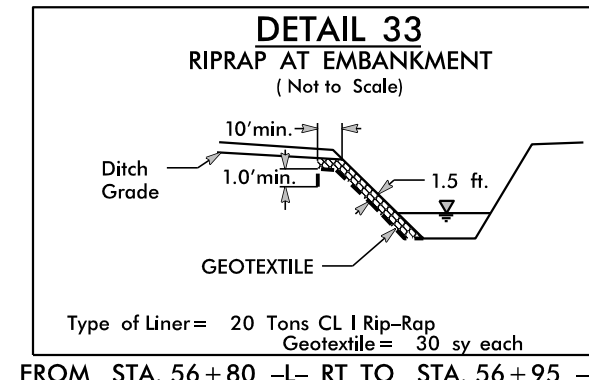
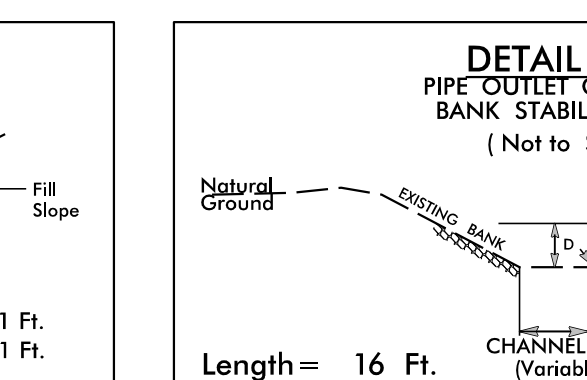
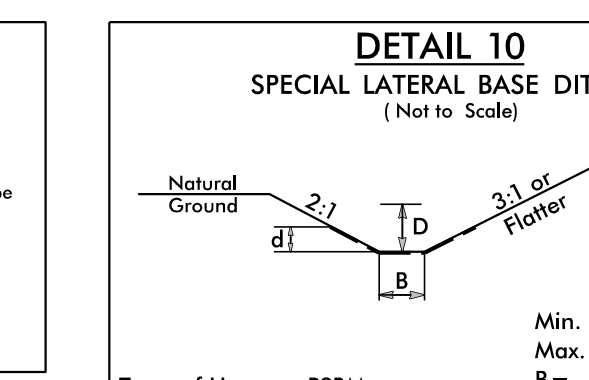
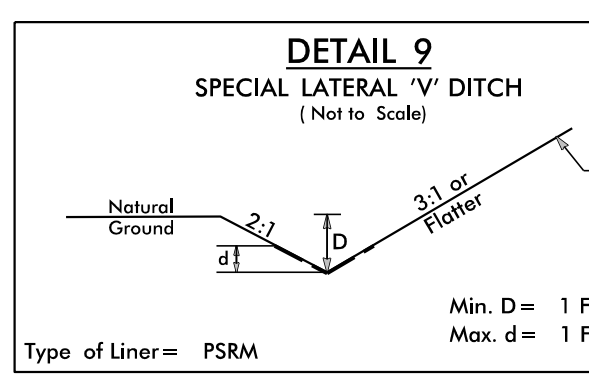
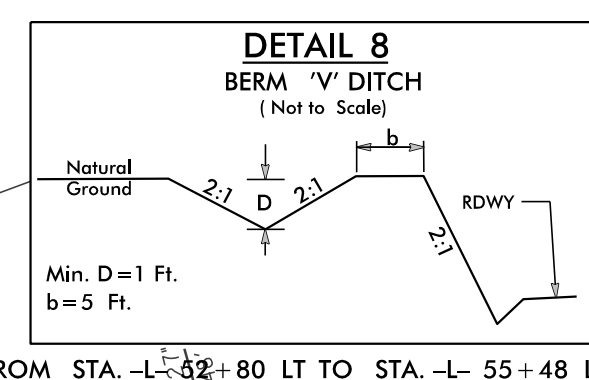
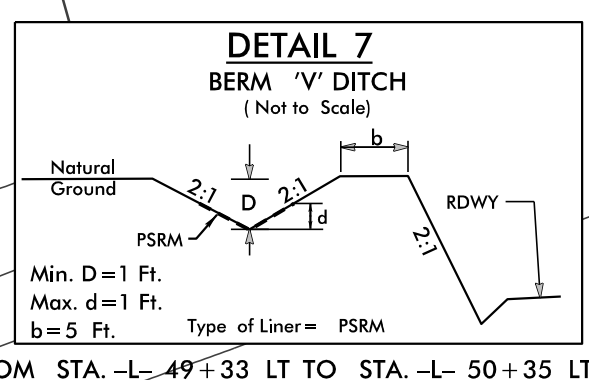
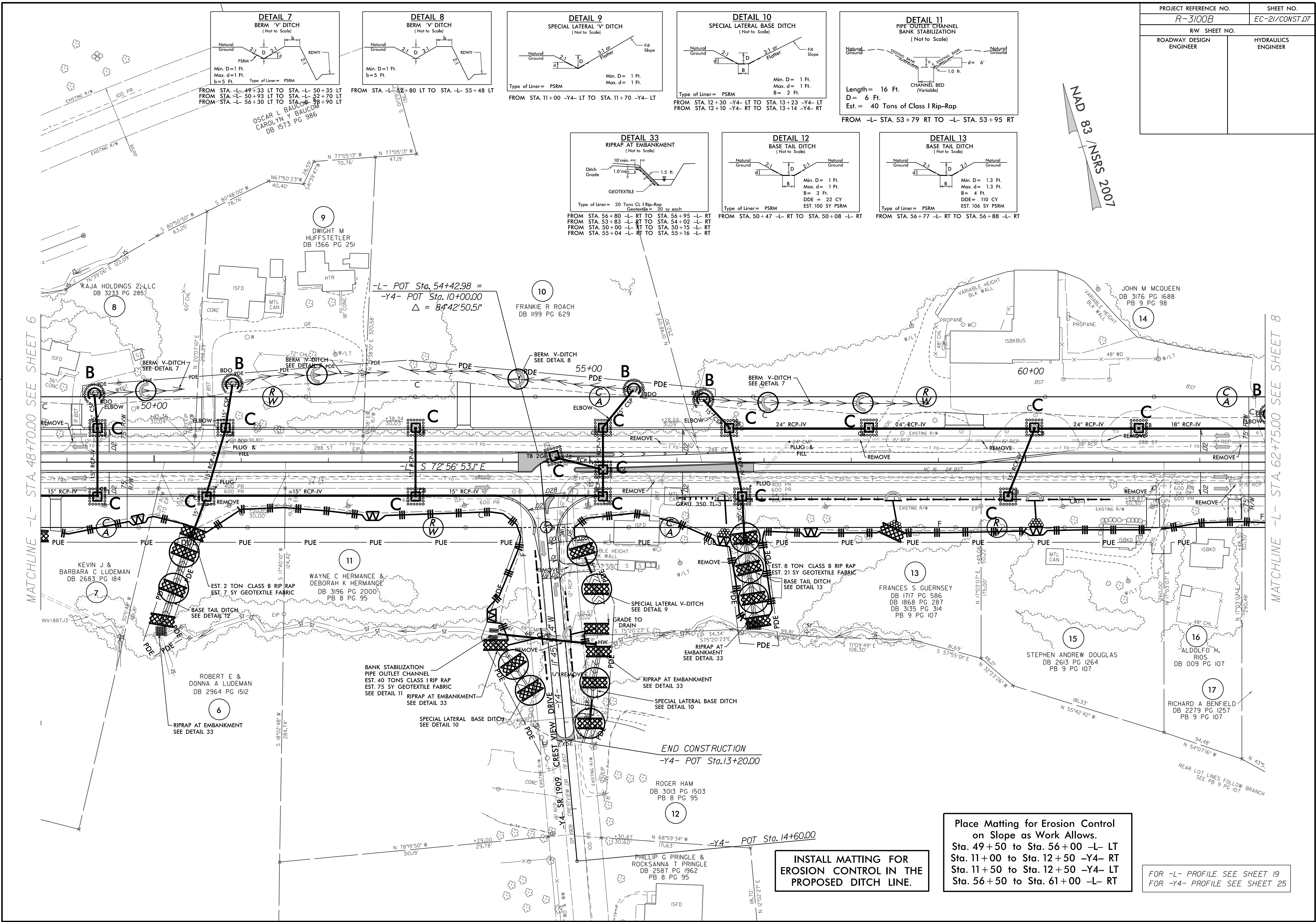


PROJECT REFERENCE NO. <b>R-3100B</b>	SHEET NO. <b>EC-21/CONST.07</b>
RW SHEET NO.	
ROADWAY DESIGN ENGINEER	HYDRAULICS ENGINEER

DATE: 01/26/2016 - REVISED ACCESS LOCATION ON PARCEL 14.

MATCHLINE -L- STA. 48+70.00 SEE SHEET 6

MATCHLINE -L- STA. 62+75.00 SEE SHEET 8



NAD 83 / NRS 2007

Place Matting for Erosion Control on Slope as Work Allows.  
Sta. 49+50 to Sta. 56+00 -L- LT  
Sta. 11+00 to Sta. 12+50 -Y4- RT  
Sta. 11+50 to Sta. 12+50 -Y4- LT  
Sta. 56+50 to Sta. 61+00 -L- RT

INSTALL MATTING FOR EROSION CONTROL IN THE PROPOSED DITCH LINE.

FOR -L- PROFILE SEE SHEET 19  
FOR -Y4- PROFILE SEE SHEET 25

END CONSTRUCTION  
-Y4- POT Sta.13+20.00

-Y4- POT Sta.14+60.00