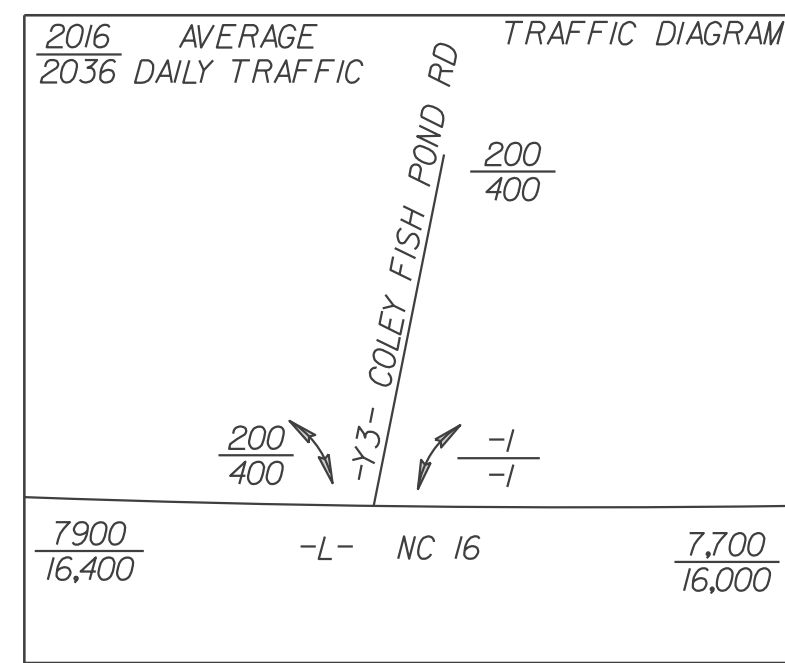
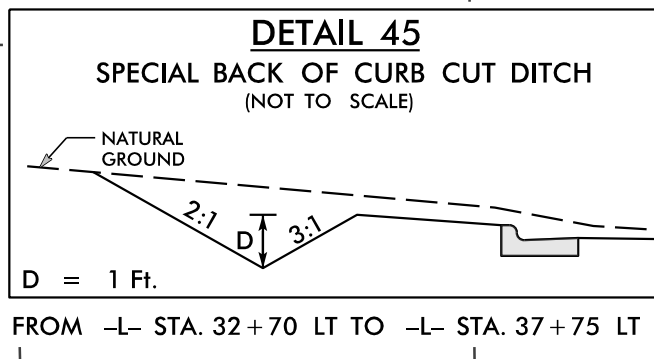


PROJECT REFERENCE NO.	SHEET NO.
R-3100B	EC-20/CONST.06
RW SHEET NO.	
ROADWAY DESIGN ENGINEER	HYDRAULICS ENGINEER

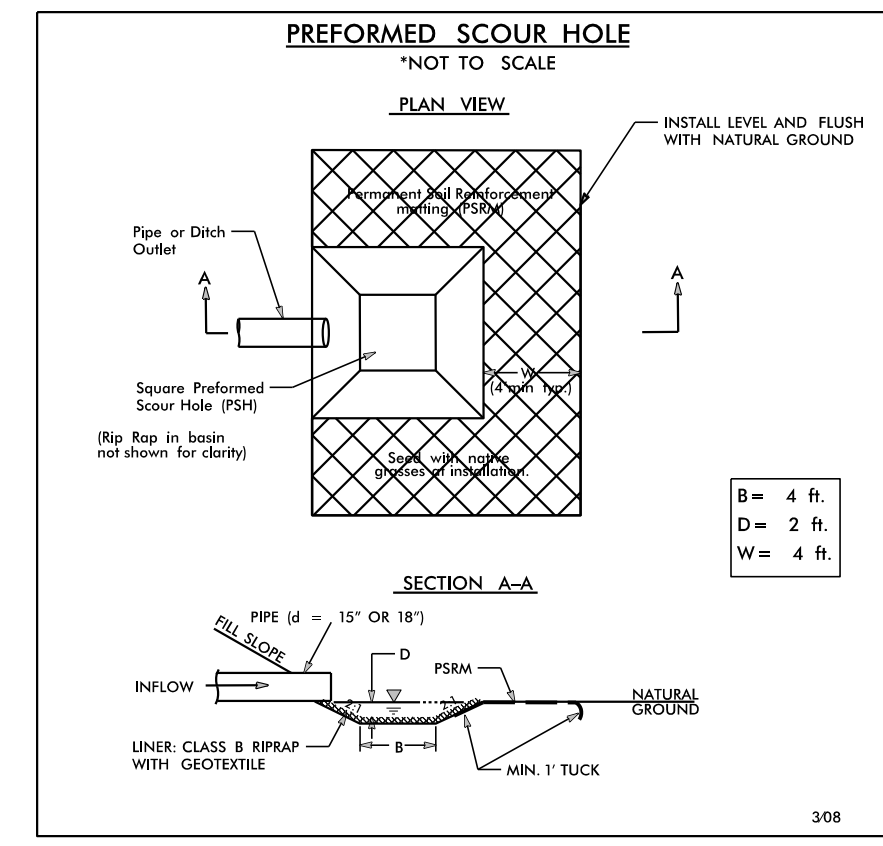
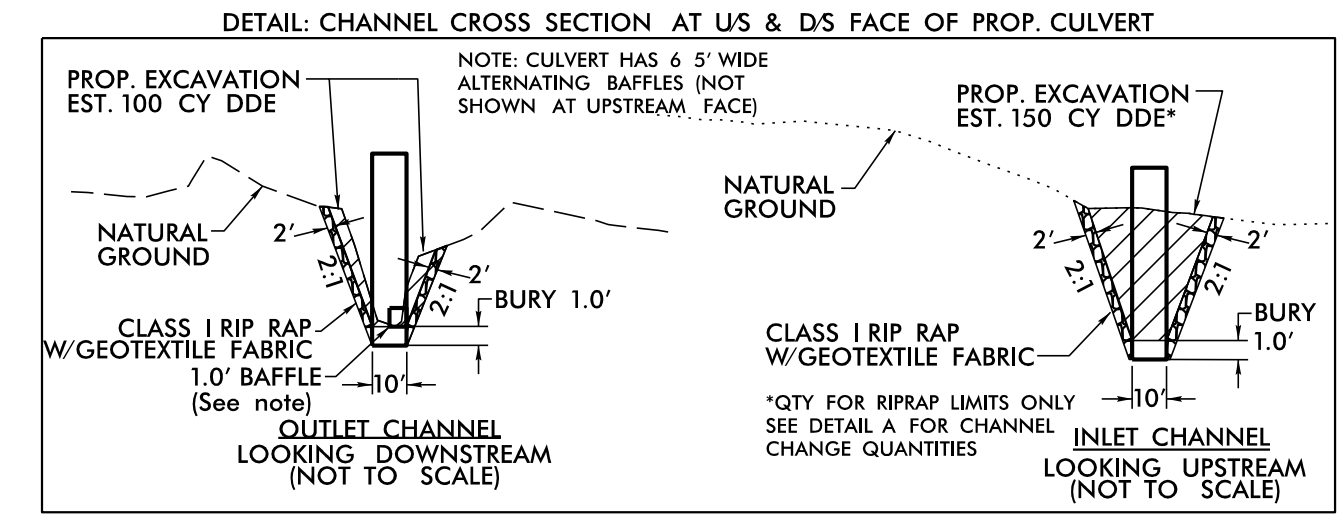
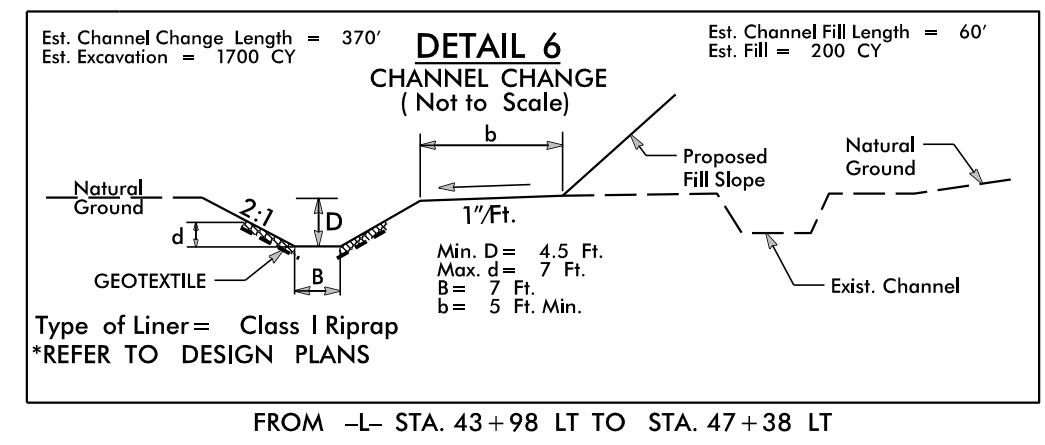
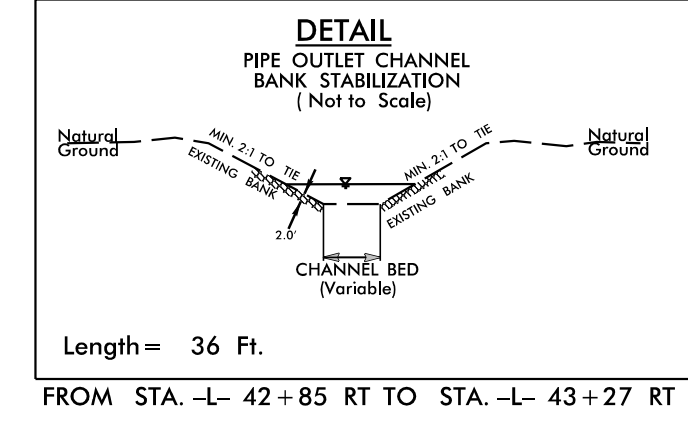
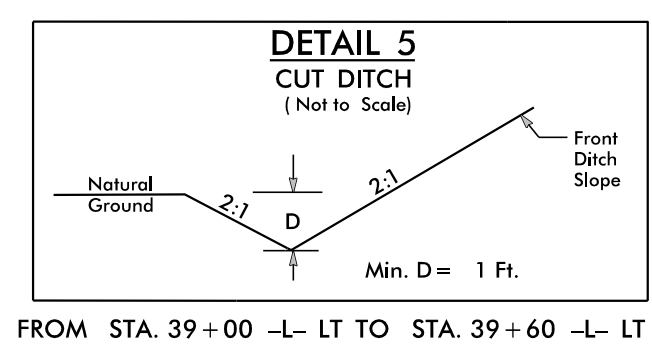
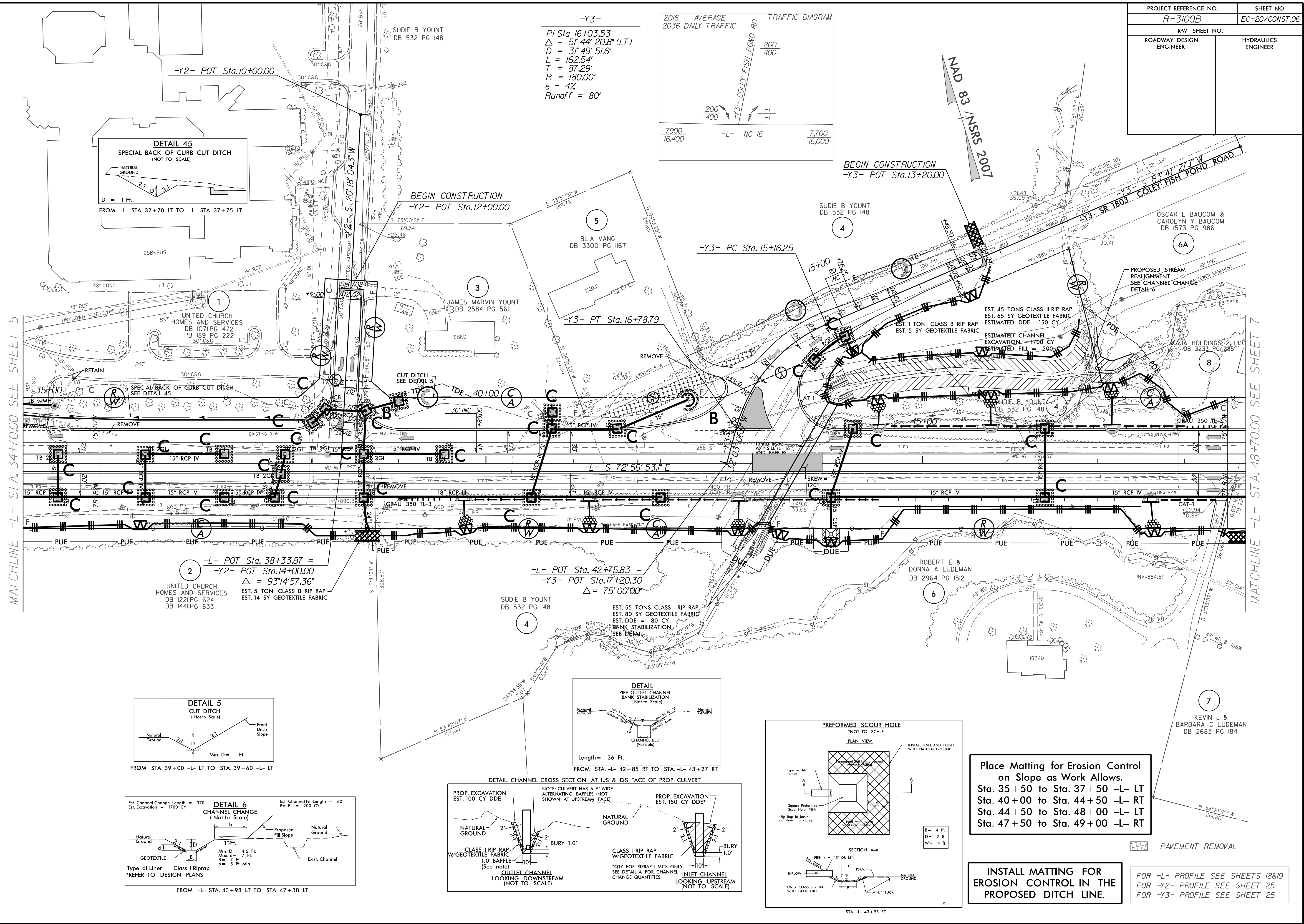


-Y3-
 $PI\ Sta\ 16+03.53$
 $\Delta = 5' 44" 20.8" (LT)$
 $D = 3' 49" 51.6"$
 $L = 162.54'$
 $T = 87.29'$
 $R = 180.00'$
 $e = 4\%$
 Runoff = 80'



MATCHLINE -L- STA. 34+70.00 SEE SHEET 5

MATCHLINE -L- STA. 48+70.00 SEE SHEET 7



Place Matting for Erosion Control on Slope as Work Allows.
 Sta. 35+50 to Sta. 37+50 -L- LT
 Sta. 40+00 to Sta. 44+50 -L- RT
 Sta. 44+50 to Sta. 48+00 -L- LT
 Sta. 47+50 to Sta. 49+00 -L- RT

INSTALL MATTING FOR EROSION CONTROL IN THE PROPOSED DITCH LINE.

FOR -L- PROFILE SEE SHEETS 18&19
 FOR -Y2- PROFILE SEE SHEET 25
 FOR -Y3- PROFILE SEE SHEET 25

DATE: 06/09/2016 - REMOVED EXTRACT ON PARCEL 1 STA. 35+50 TO STA. 36+40