

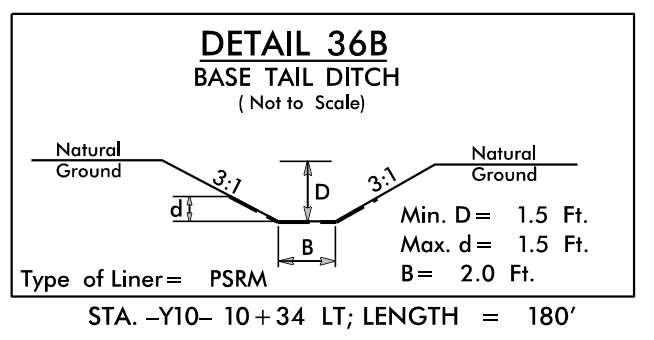
PROJECT REFERENCE NO.	SHEET NO.
R-3100B	EC-14/CONST J4
R/W SHEET NO.	
ROADWAY DESIGN ENGINEER	HYDRAULICS ENGINEER

NAD 83 / NSRS 2007

CLEARING AND GRUBBING EROSION CONTROL FOR CONSTRUCTION SHEET 14

MATCHLINE -Y10- STA. 11+70.00 SEE INSET
-BY11-91

-L-
PI Sta 165+32.27
 $\Delta = 21'06''08.2''$ (LT)
 $D = 0'52''53.3''$
 $L = 2,393.98'$
 $T = 1,210.71'$
 $R = 6,500.00'$
 $e = RC$
Runoff = 72'



140 x 28 x 3
2.0 inch Skimmer
with 1.625 inch
Orifice Diameter
16 ft. weir
ID 14.1

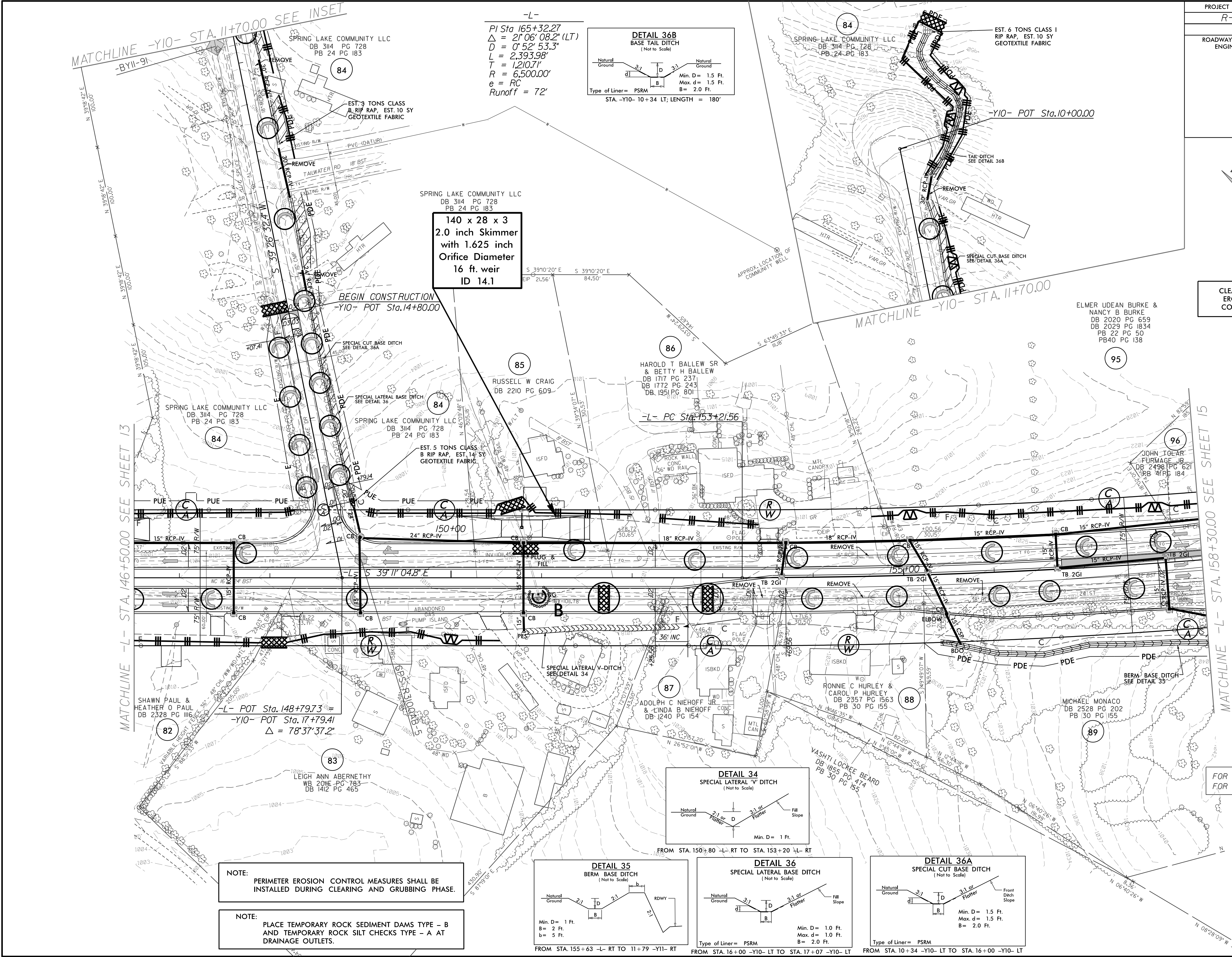
BEGIN CONSTRUCTION
-Y10- POT Sta. 14+80.00

MATCHLINE -Y10- STA. 11+70.00

ELMER UDEAN BURKE &
NANCY B BURKE
DB 2020 PG 659
DB 2029 PG 1834
PB 22 PG 50
PB40 PG 138

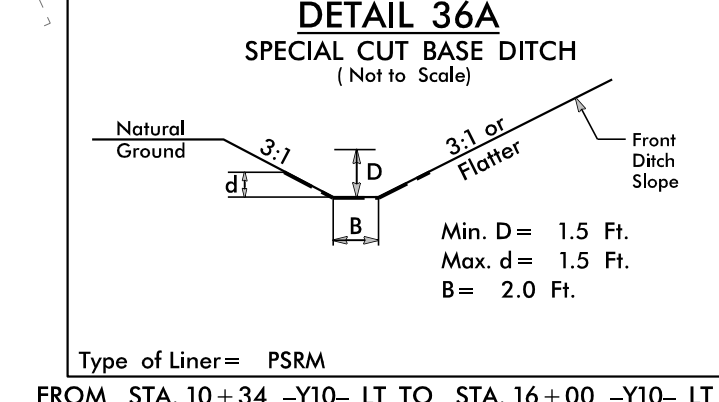
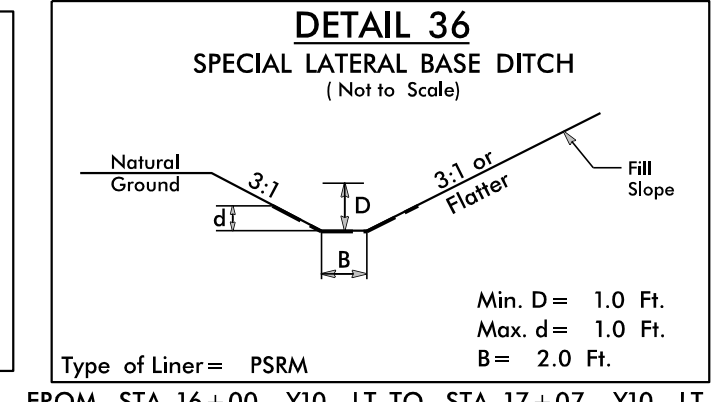
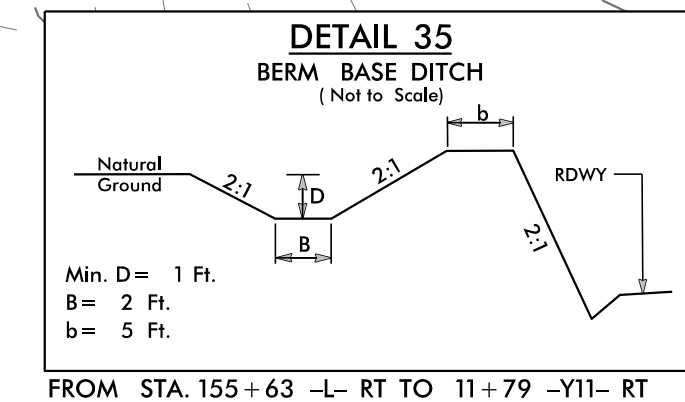
MATCHLINE -L- STA. 146+50.00 SEE SHEET 13

MATCHLINE -L- STA. 158+30.00 SEE SHEET 15



NOTE: PERIMETER EROSION CONTROL MEASURES SHALL BE INSTALLED DURING CLEARING AND GRUBBING PHASE.

NOTE: PLACE TEMPORARY ROCK SEDIMENT DAMS TYPE - B AND TEMPORARY ROCK SILT CHECKS TYPE - A AT DRAINAGE OUTLETS.



FOR -L- PROFILE SEE SHEET 23
FOR -Y10- PROFILE SEE SHEET 26