

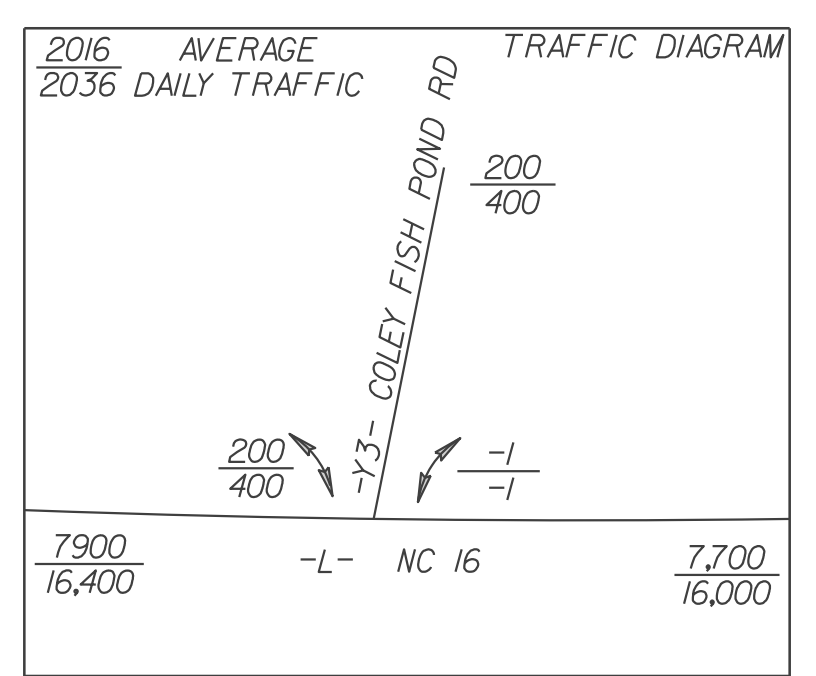
PROJECT REFERENCE NO.	SHEET NO.
R-3100B	EC-06/CONST.06
RW SHEET NO.	
ROADWAY DESIGN ENGINEER	HYDRAULICS ENGINEER

NOTE: PERIMETER EROSION CONTROL MEASURES SHALL BE INSTALLED DURING CLEARING AND GRUBBING PHASE.

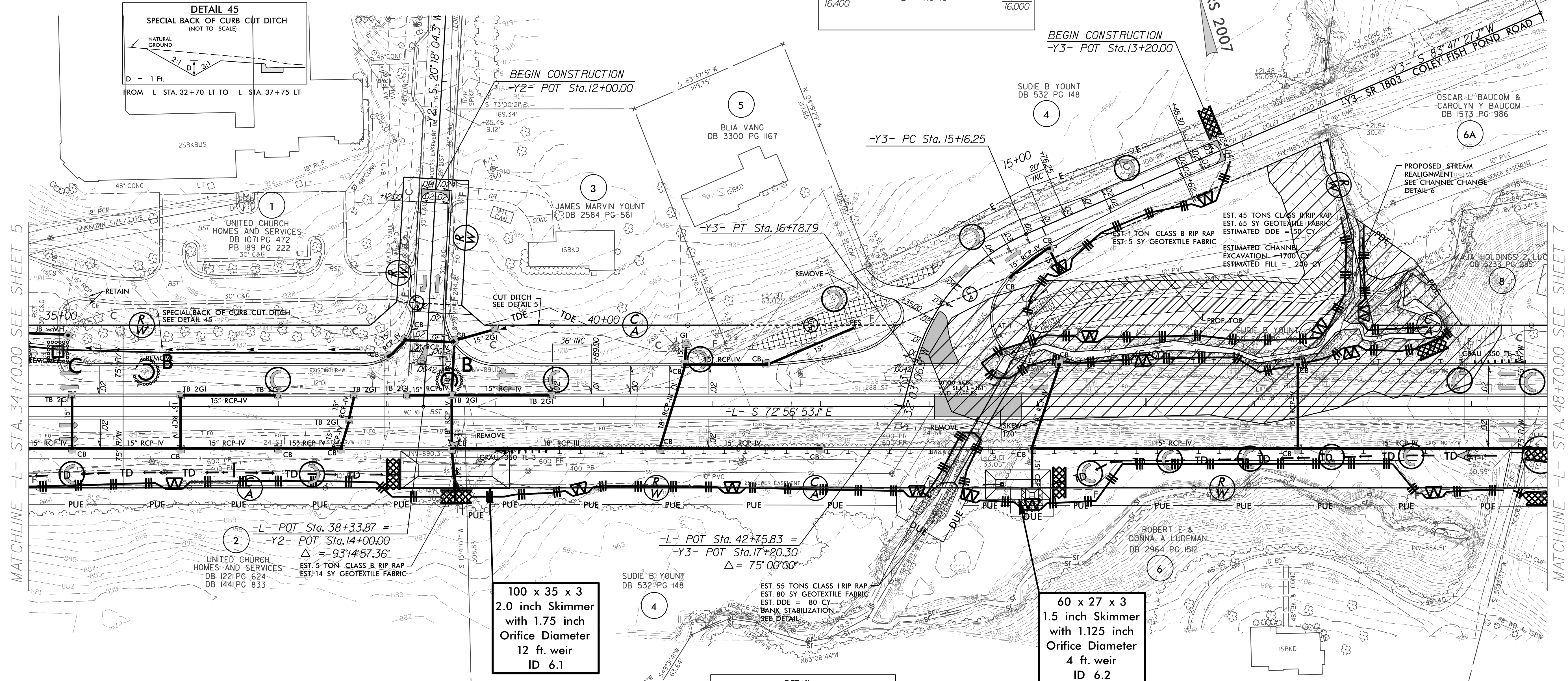
NOTE: PLACE TEMPORARY ROCK SEDIMENT DAMS TYPE - B AND TEMPORARY ROCK SILT CHECKS TYPE - A AT DRAINAGE OUTLETS.

-Y3-

PI Sta 16+03.53  
 $\Delta = 5' 44" 20.8" (LT)$   
 $D = 3' 49" 51.6"$   
 $L = 162.54'$   
 $T = 87.29'$   
 $R = 180.00'$   
 $e = 4\%$   
 Runoff = 80'

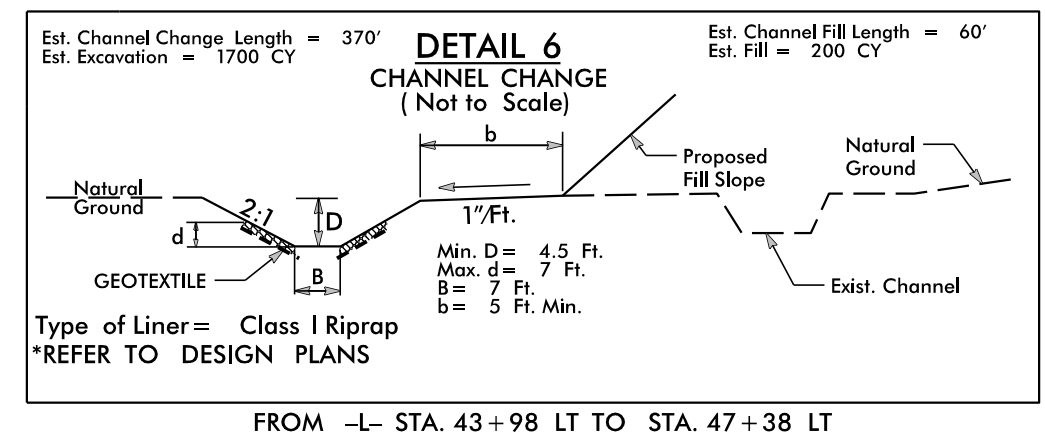
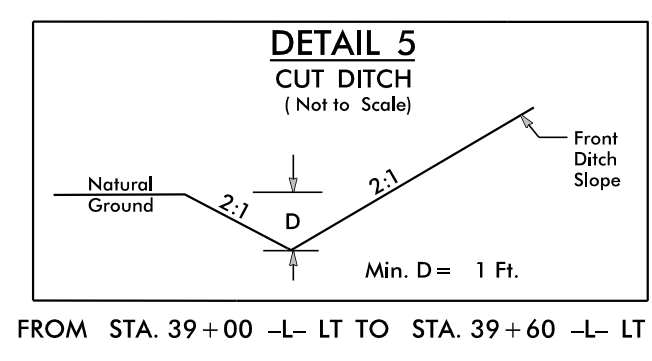
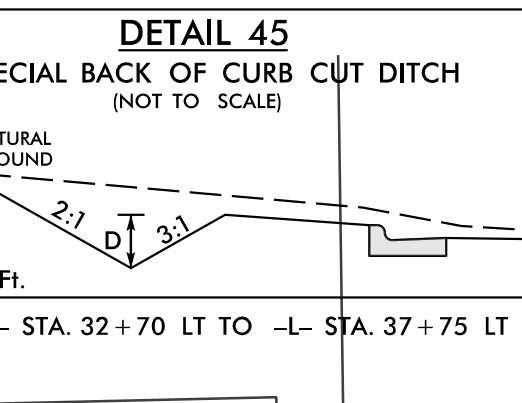


CLEARING AND GRUBBING EROSION CONTROL FOR CONSTRUCTION SHEET 06



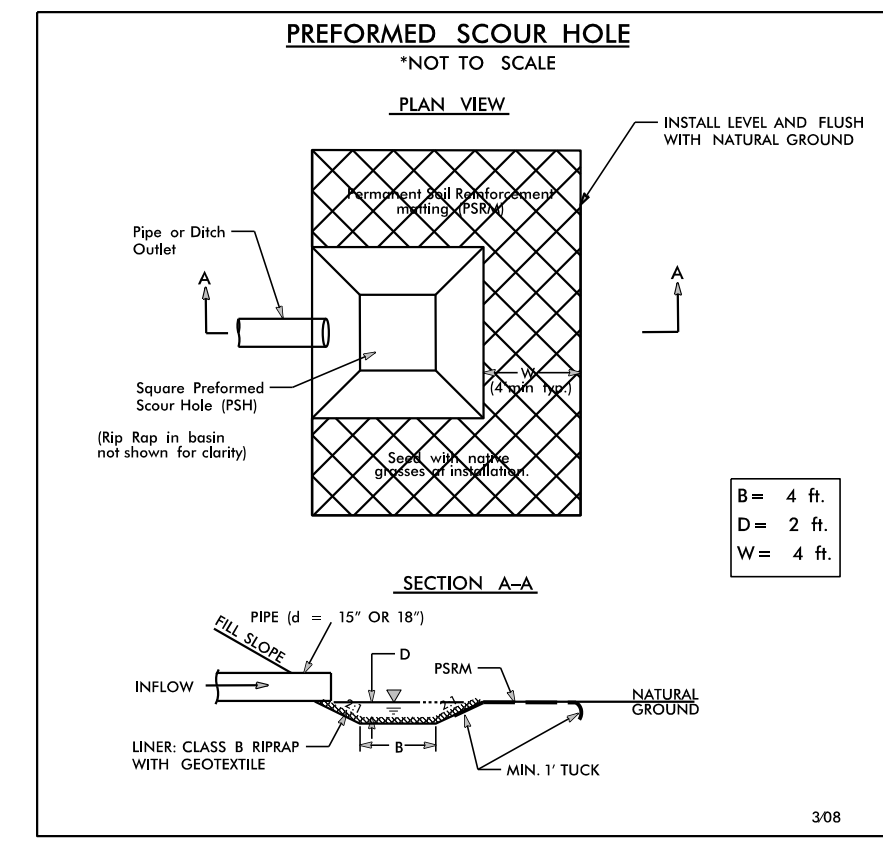
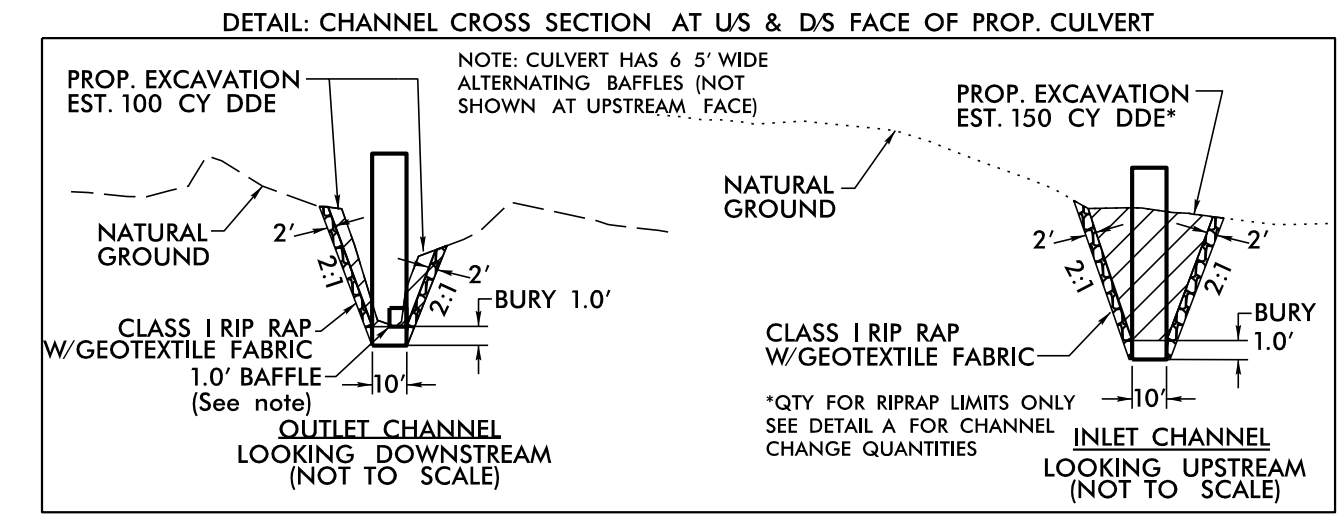
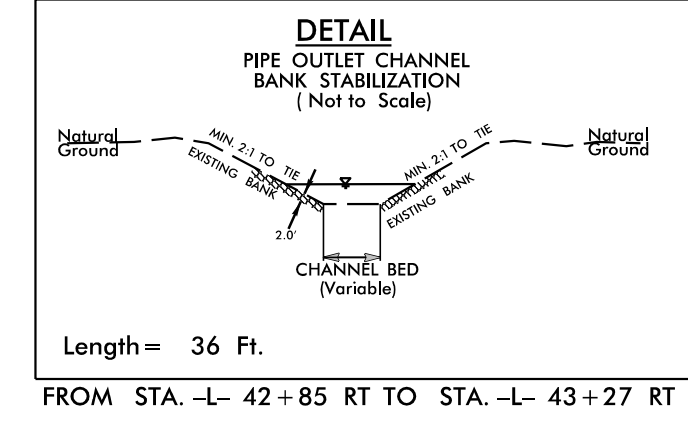
MATCHLINE -L- STA. 34+70.00 SEE SHEET 5

MATCHLINE -L- STA. 48+70.00 SEE SHEET 7



100 x 35 x 3  
 2.0 inch Skimmer  
 with 1.75 inch  
 Orifice Diameter  
 12 ft. weir  
 ID 6.1

60 x 27 x 3  
 1.5 inch Skimmer  
 with 1.125 inch  
 Orifice Diameter  
 4 ft. weir  
 ID 6.2



ENVIRONMENTALLY SENSITIVE AREA  
 SEE PROJECT SPECIAL PROVISIONS

PAVEMENT REMOVAL

FOR -L- PROFILE SEE SHEETS 18&19  
 FOR -Y2- PROFILE SEE SHEET 25  
 FOR -Y3- PROFILE SEE SHEET 25

DATE: 06/09/2016 - REMOVED EXTRACT ON PARCEL 1 STA 35+50 TO STA 36+40