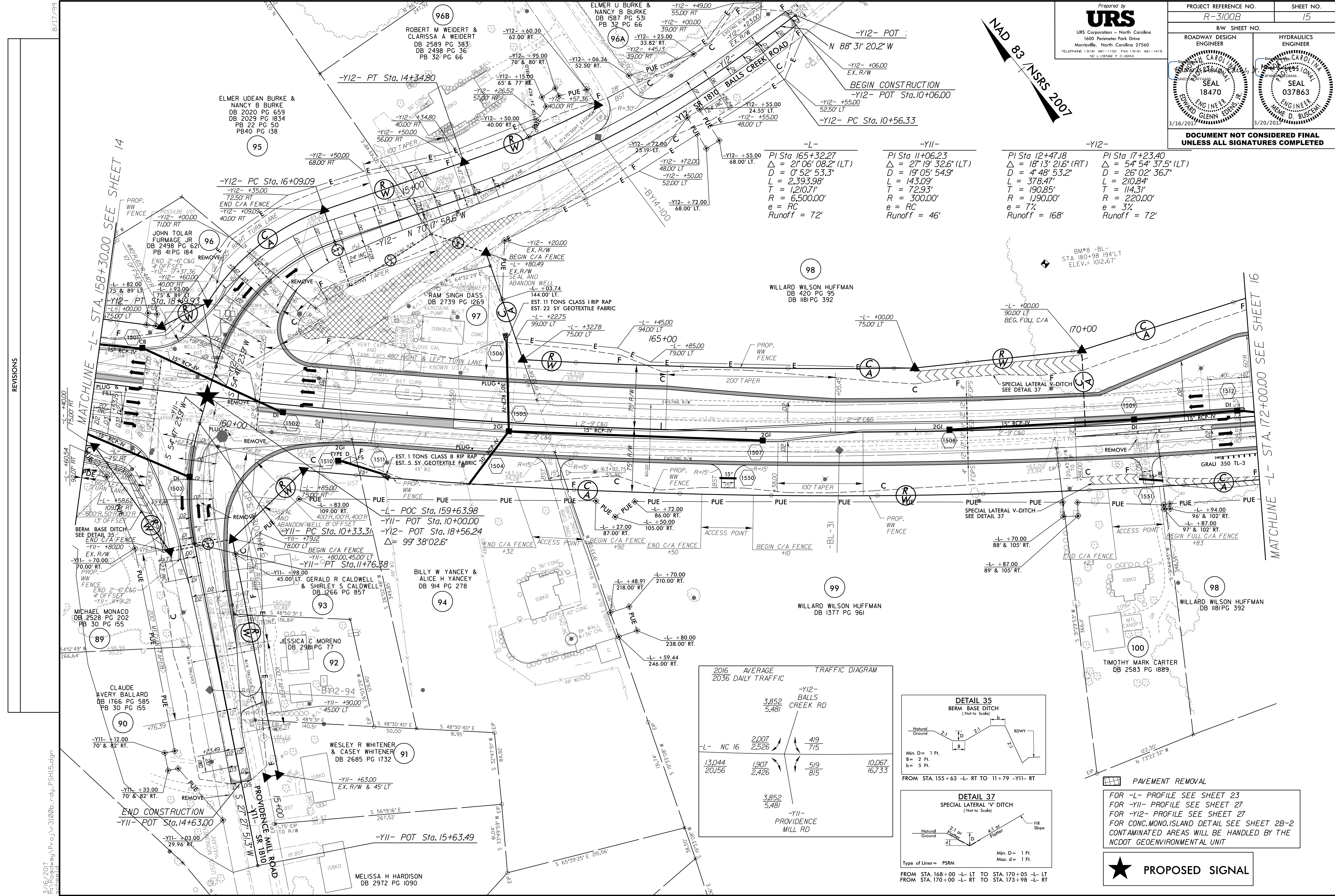
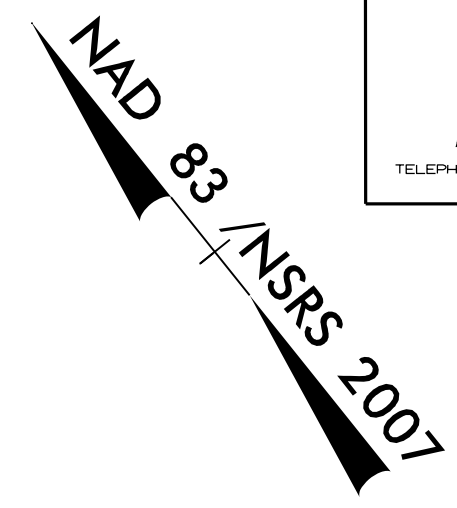
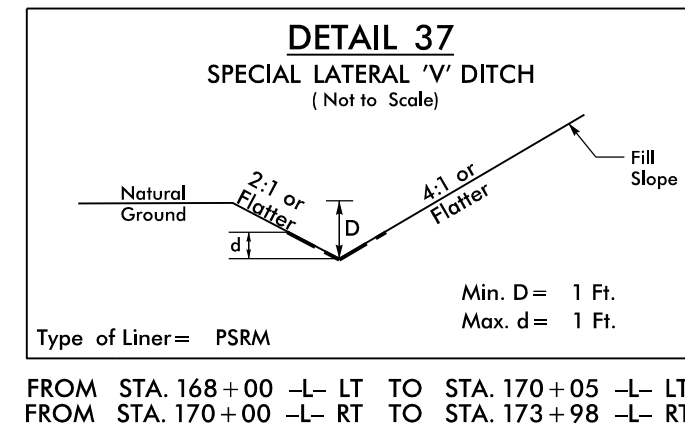
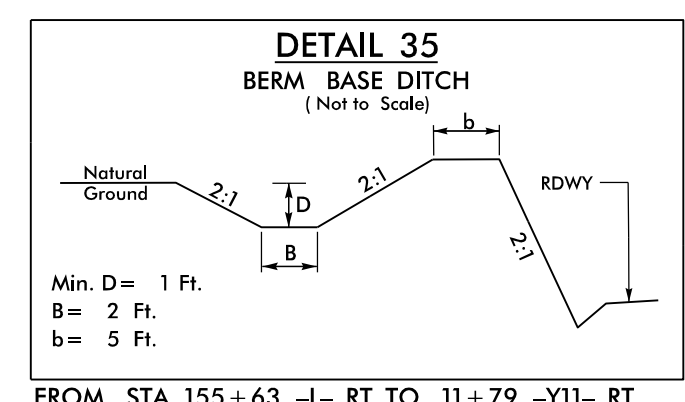
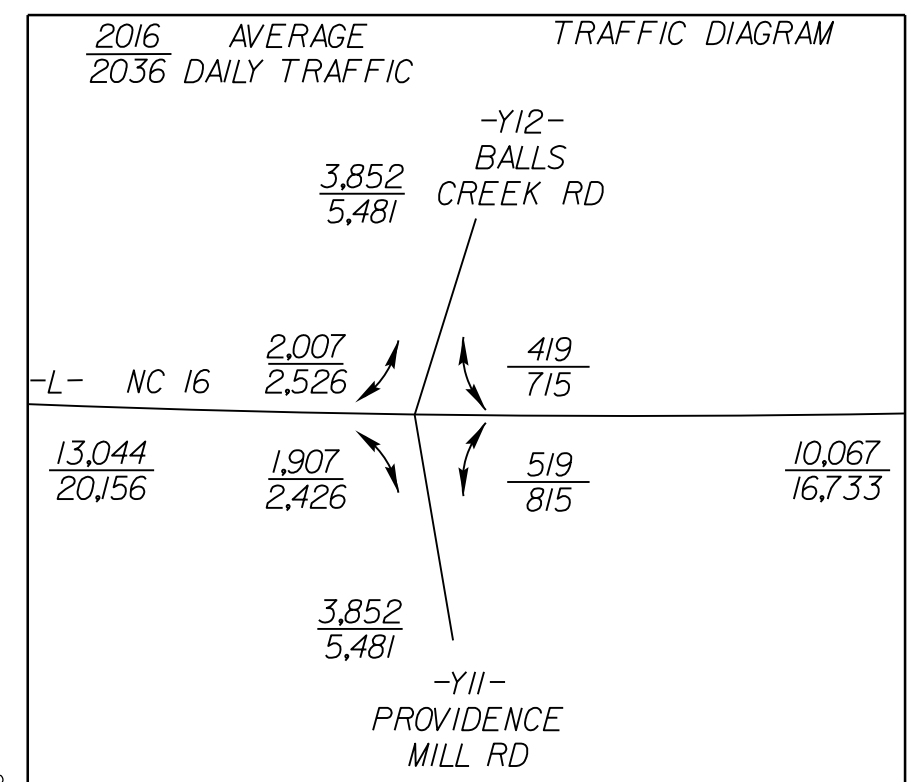


**DOCUMENT NOT CONSIDERED FINAL
UNLESS ALL SIGNATURES COMPLETED**



-L-	-Y11-	-Y12-	-Y12-
PI Sta 165+32.27	PI Sta 11+06.23	PI Sta 12+47.18	PI Sta 17+23.40
$\Delta = 21' 06" 08.2" (LT)$	$\Delta = 27' 19" 32.6" (LT)$	$\Delta = 18' 13" 21.6" (RT)$	$\Delta = 54' 54" 37.5" (LT)$
$D = 0' 52" 53.3"$	$D = 19' 05" 54.9"$	$D = 4' 48" 53.2"$	$D = 26' 02" 36.7"$
$L = 2,393.98'$	$L = 143.09'$	$L = 378.47'$	$L = 210.84'$
$T = 1,210.71'$	$T = 72.93'$	$T = 190.85'$	$T = 114.31'$
$R = 6,500.00'$	$R = 3,000.00'$	$R = 1,190.00'$	$R = 2,200.00'$
$e = RC$	$e = RC$	$e = 7\%$	$e = 3\%$
Runoff = 72'	Runoff = 46'	Runoff = 168'	Runoff = 72'



PAVEMENT REMOVAL

FOR -L- PROFILE SEE SHEET 23
FOR -Y11- PROFILE SEE SHEET 27
FOR -Y12- PROFILE SEE SHEET 27
FOR CONC. MONO-ISLAND DETAIL SEE SHEET 2B-2
CONTAMINATED AREAS WILL BE HANDLED BY THE
NCDOT GEOENVIRONMENTAL UNIT



REVISIONS

3/16/2017
R:\Roadway\Pro\17-3100b_rdy_PSH15.dgn
rscheid