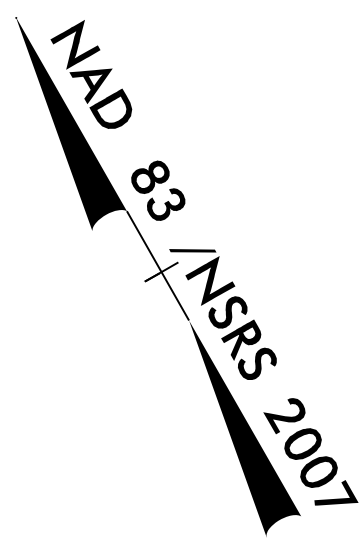


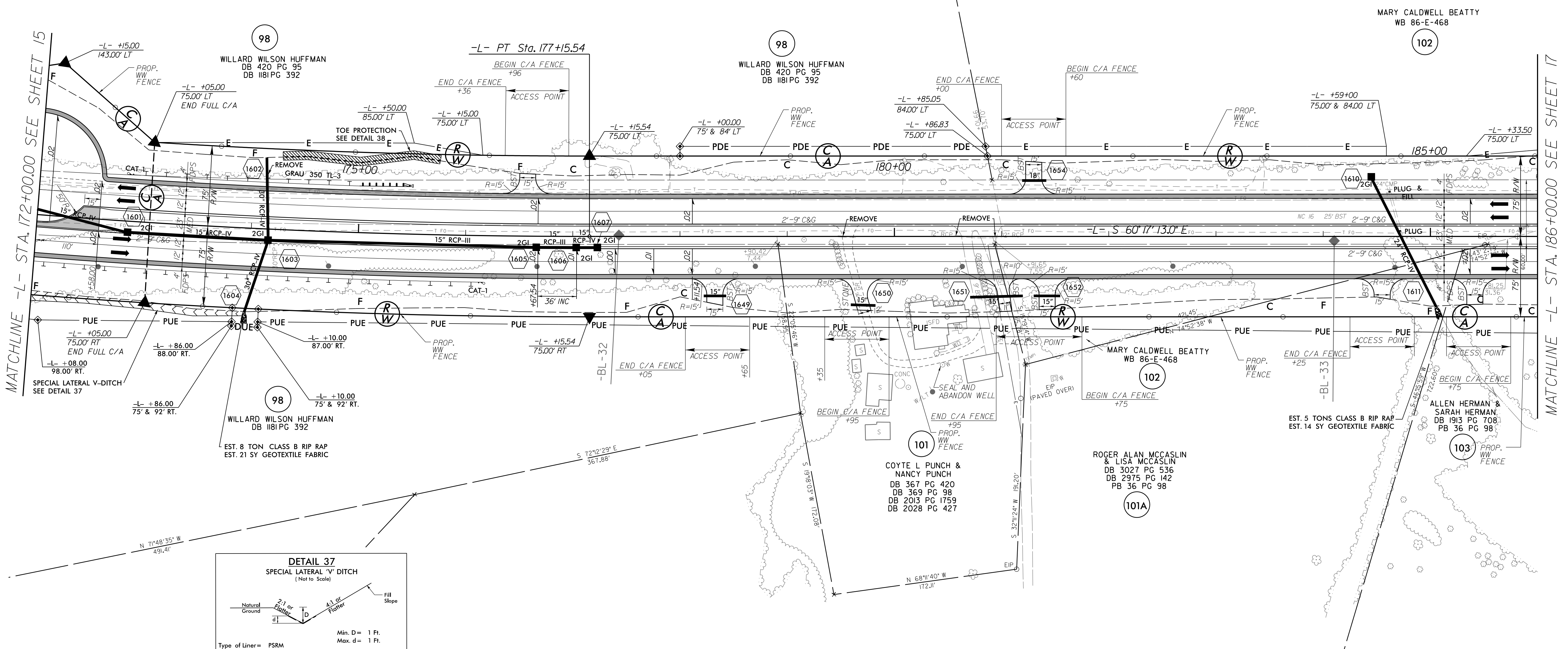
8/17/99

Prepared by  
**URS**  
URS Corporation - North Carolina  
1600 Perimeter Park Drive  
Morrisville, North Carolina 27560  
TELEPHONE (919) 461-1100 FAX (919) 461-1415  
NC LICENSE # C-22943

PROJECT REFERENCE NO. R-3100B	SHEET NO. 16
R/W SHEET NO. ROADWAY DESIGN ENGINEER	HYDRAULICS ENGINEER
DOCUMENT NOT CONSIDERED FINAL UNLESS ALL SIGNATURES COMPLETED	

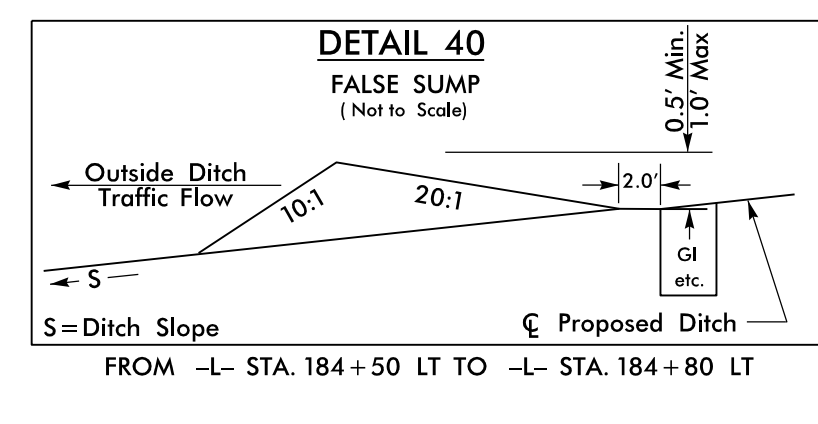
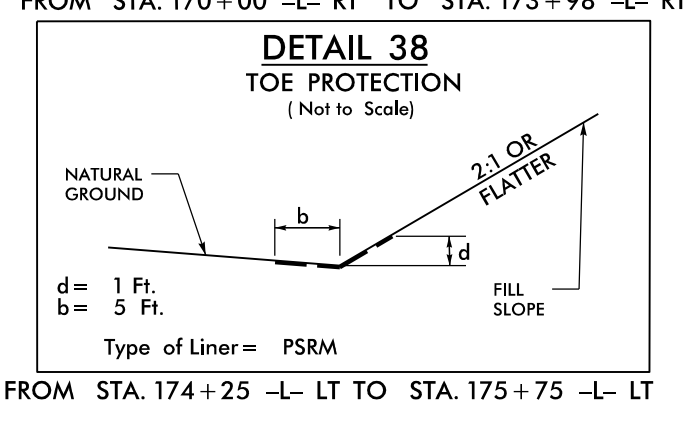
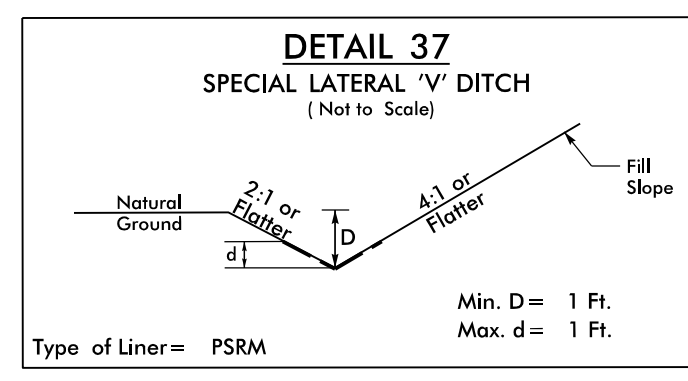


-L-  
PI Sta 165+32.27  
 $\Delta = 2' 06'' 08.2'' (LT)$   
 $D = 0' 52'' 53.3''$   
 $L = 2,393.98'$   
 $T = 1,210.71'$   
 $R = 6,500.00'$   
 $e = RC$   
Runoff = 72'



MATCHLINE -L- STA. 172+00.00 SEE SHEET 15

MATCHLINE -L- STA. 186+00.00 SEE SHEET 17



FOR -L- PROFILE SEE SHEET 24  
FOR CONC. MONO. ISLAND DETAIL SEE SHEET 2B-2

REVISIONS

3/16/2017  
R:\Roadway\Proj\3100b\_rdy\_PSH16.dgn  
scheld