

8/17/99

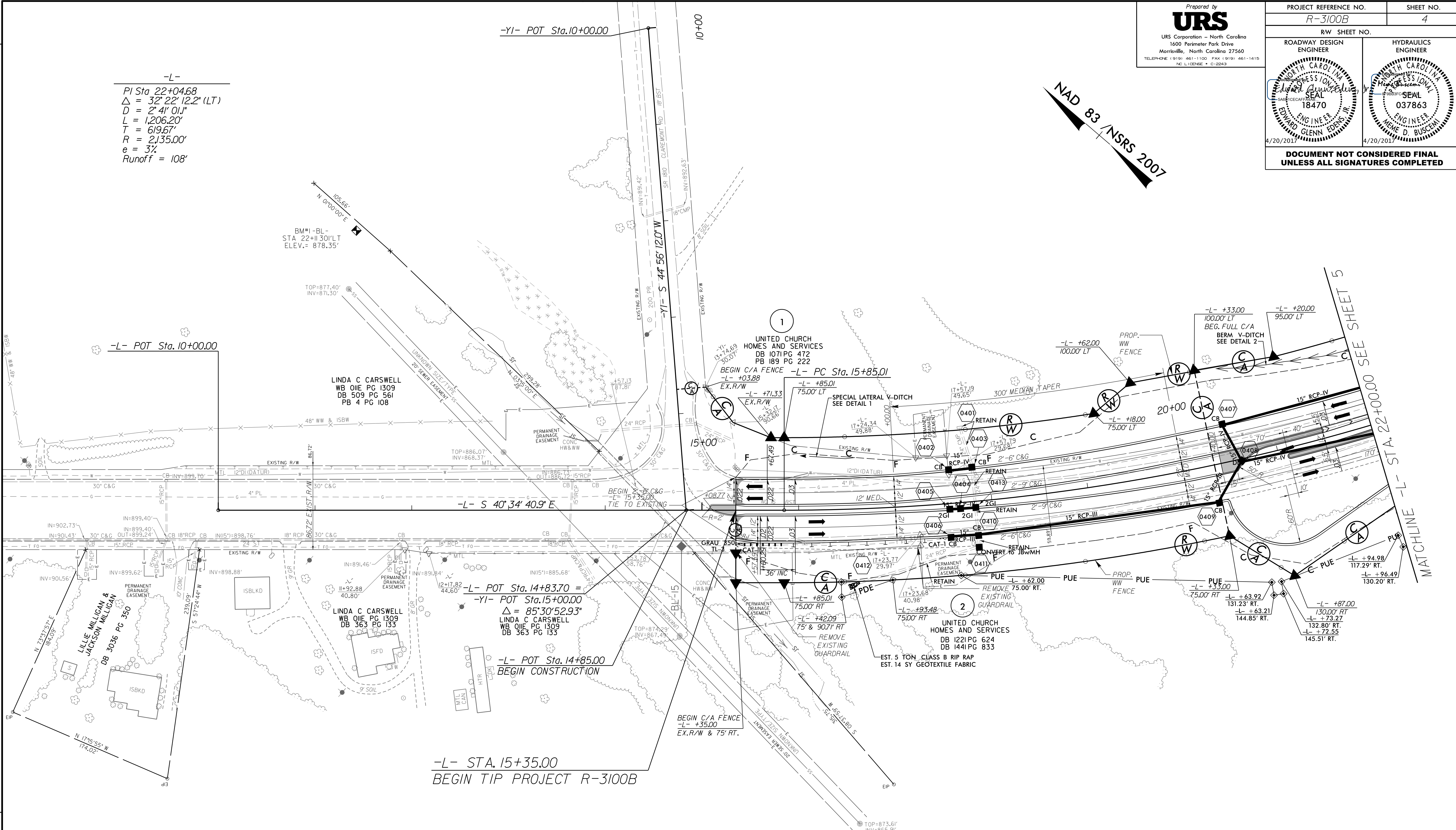
Prepared by
URS
URS Corporation - North Carolina
1600 Perimeter Park Drive
Morrisville, North Carolina 27560
TELEPHONE: (919) 461-1100 FAX: (919) 461-1415
NO. L10266E - C-2242

| | |
|--|-----------------------|
| PROJECT REFERENCE NO. R-3100B | SHEET NO. 4 |
| ROADWAY DESIGN ENGINEER | HYDRAULICS ENGINEER |
| | |
| DOCUMENT NOT CONSIDERED FINAL UNLESS ALL SIGNATURES COMPLETED | |

NAD 83 / NSRS 2007

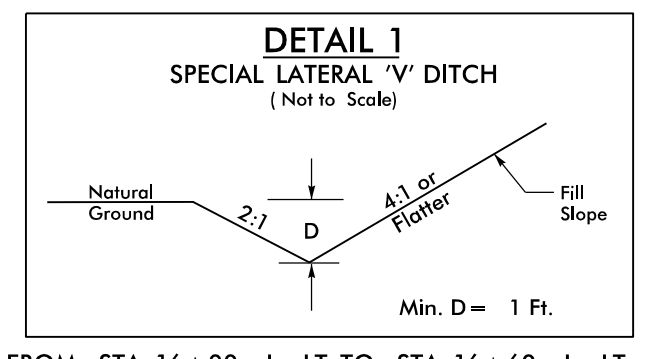
-L-
PI Sta. 22+04.68
 $\Delta = 32^{\circ} 22' 12.2" (LT)$
 $D = 2^{\circ} 41' 01.1"$
 $L = 1,206.20'$
 $T = 619.67'$
 $R = 2,135.00'$
 $e = 3\%$
Runoff = 108'

REVISIONS
ROW REV. ON LET PROJECT - APRIL 20, 2017 - REVISED PUE ALONG PACEL 2 (EGE)

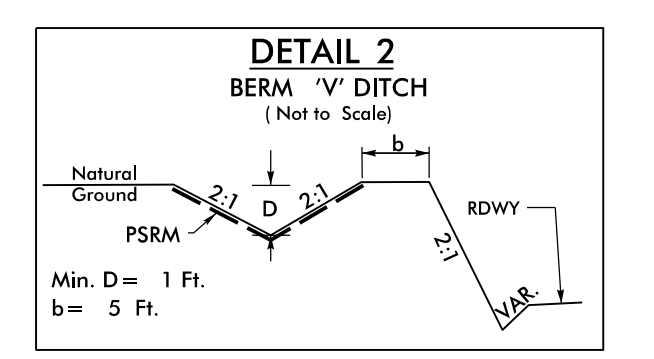


-L- POT Sta. 14+83.70 =
-YI- POT Sta. 15+00.00
 $\Delta = 85^{\circ} 30' 52.93"$
LINDA C CARSWELL
WB 01E PG 1309
DB 363 PG 133

-L- STA. 15+35.00
BEGIN TIP PROJECT R-3100B



FROM STA. 16+00 -L- LT TO STA. 16+60 -L- LT



FROM STA. 20+53 -L- LT TO STA. 22+65 -L- LT

FOR -L- PROFILE SEE SHEET 18
FOR CONC. MONO. ISLAND DETAIL SEE SHEET 2B-1

4/20/2017
R:\Roadway\Proj\N-3100b_rdy_PSH04.dgn
scheld