

8/17/99

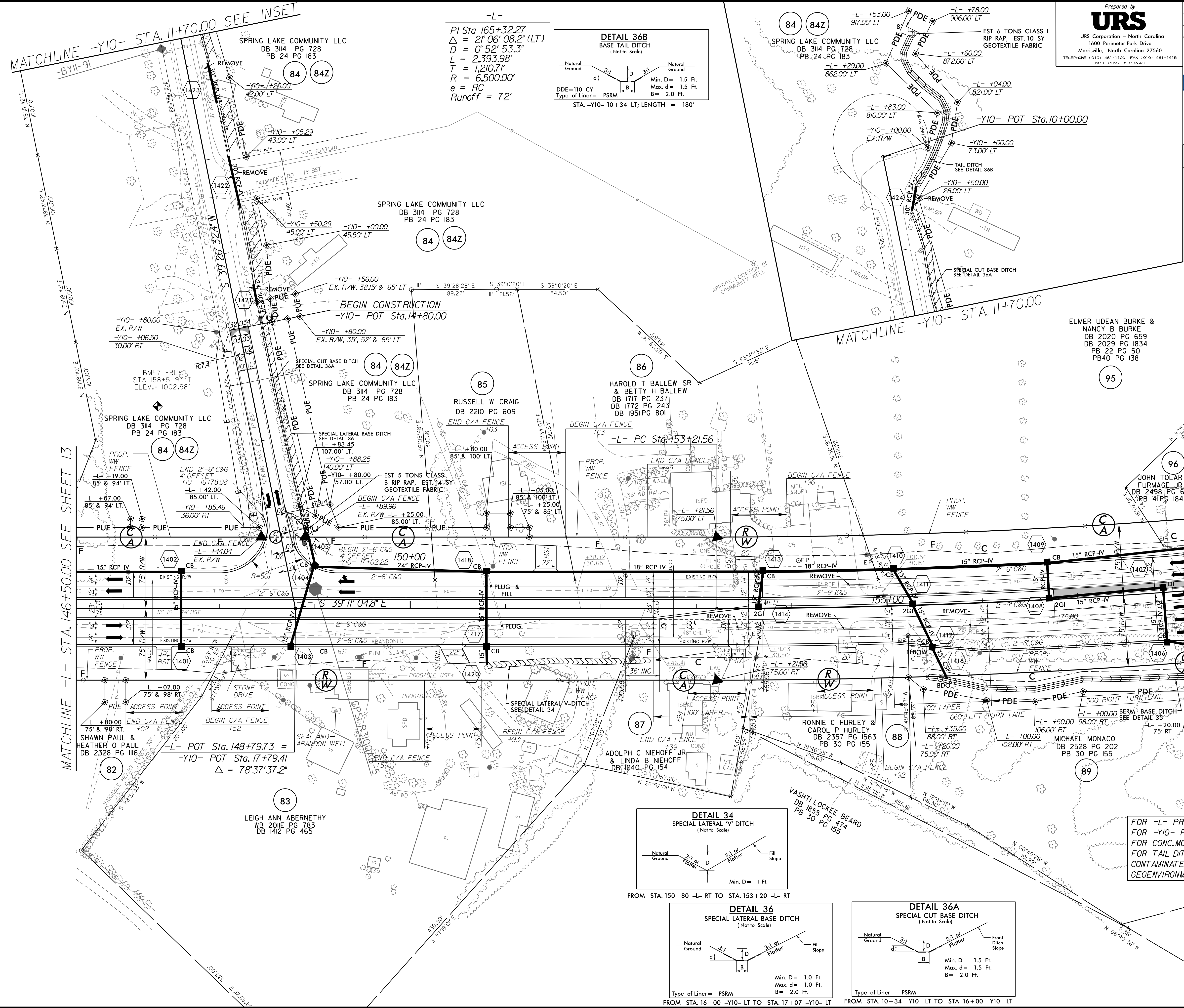
REVISIONS  
FROM REV. ON LET. PROJECT - APRIL 27, 2017 - REVISED PARCEL 84 AND ADDED PARCEL NUMBER 84Z (EGE)

4/26/2017  
R:\Roadway\Proj\17-3100b\_rdy\_PSH14.dgn  
rscheid

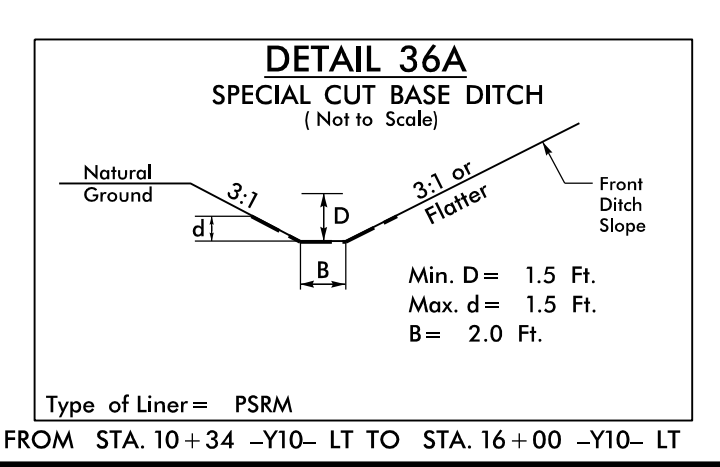
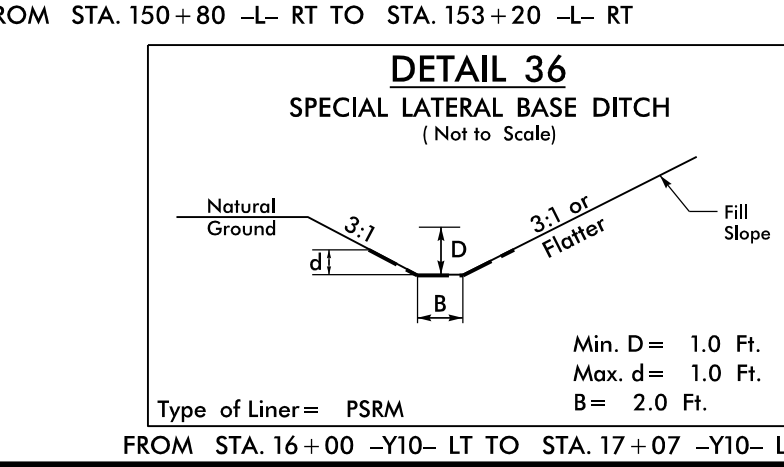
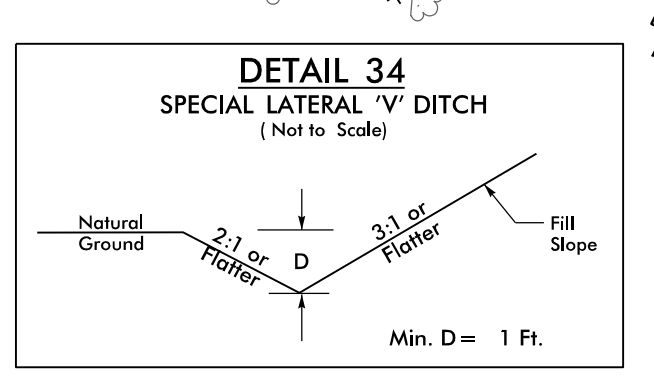
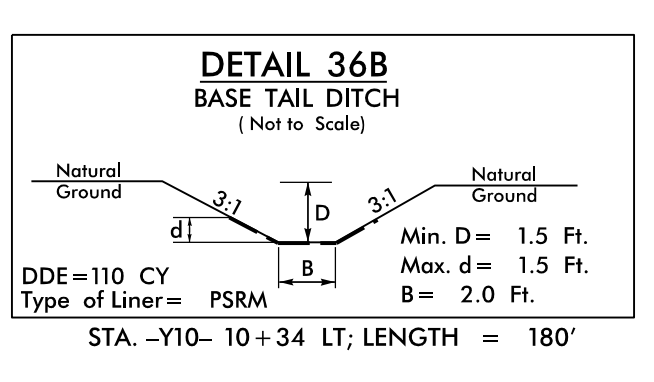
MATCHLINE -Y10- STA. 11+70.00 SEE INSET  
-BY11-91

MATCHLINE -L- STA. 146+50.00 SEE SHEET 13

MATCHLINE -L- STA. 158+30.00 SEE SHEET 15



-L-  
 $PI\ Sta\ 165+32.27$   
 $\Delta = 21^{\circ}06'08.2''\ (LT)$   
 $D = 0^{\circ}52'53.3''$   
 $L = 2,393.98'$   
 $T = 1,210.71'$   
 $R = 6,500.00'$   
 $e = RC$   
 $Runoff = 72'$



FOR -L- PROFILE SEE SHEET 23  
 FOR -Y10- PROFILE SEE SHEET 26  
 FOR CONC. MONO-ISLAND DETAIL SEE SHEET 2B-2  
 FOR TAIL DITCH ALIGNMENT DETAILS SEE SHEET 2D-2  
 CONTAMINATED AREAS WILL BE HANDLED BY THE NCDOT  
 GEOENVIRONMENTAL UNIT

Prepared by  
**URS**  
 URS Corporation - North Carolina  
 1600 Perimeter Park Drive  
 Morrisville, North Carolina 27560  
 TELEPHONE (919) 461-1100 FAX (919) 461-1415  
 NC LIC. NO. 48824

PROJECT REFERENCE NO. R-3100B	SHEET NO. 14
R/W SHEET NO.	HYDRAULICS ENGINEER
ROADWAY DESIGN ENGINEER	ENGINEER
SEAL 18470 EDWARD GLENN EDWARDS JR. 4/26/2017	SEAL 037863 MEME D. BUSCEMI 4/27/2017

DOCUMENT NOT CONSIDERED FINAL  
 UNLESS ALL SIGNATURES COMPLETED

