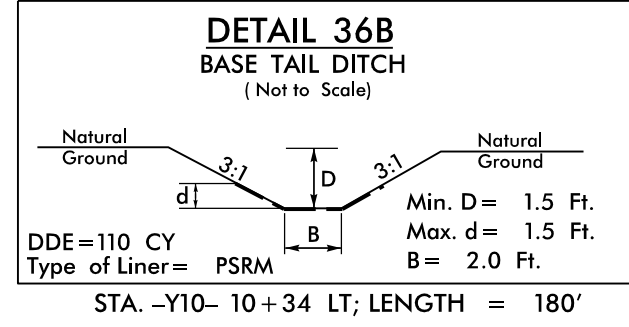


MATCHLINE -Y10- STA. 11+70.00 SEE INSET
-BY11-91

-L-

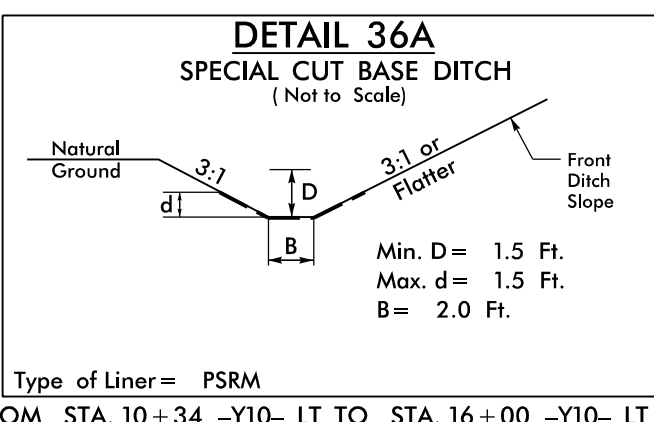
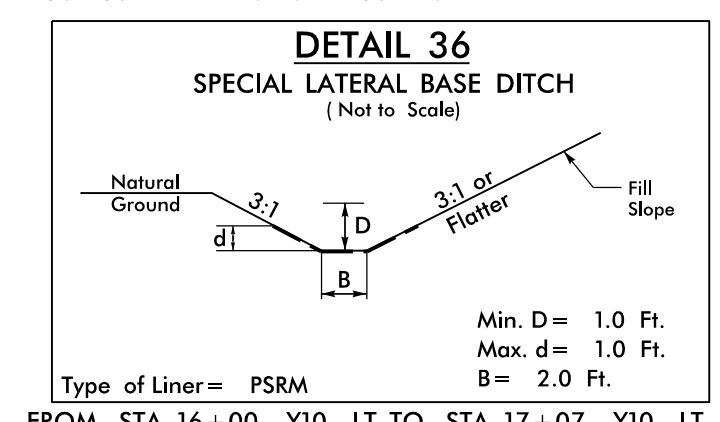
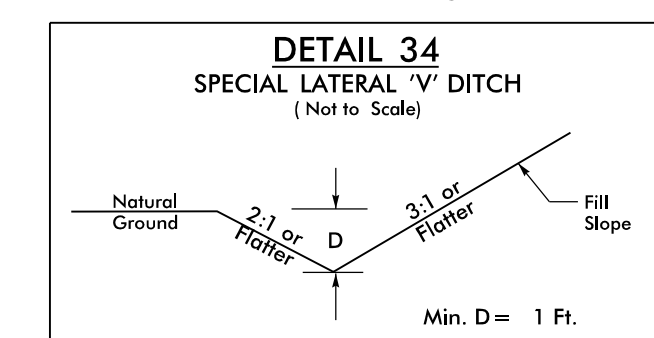
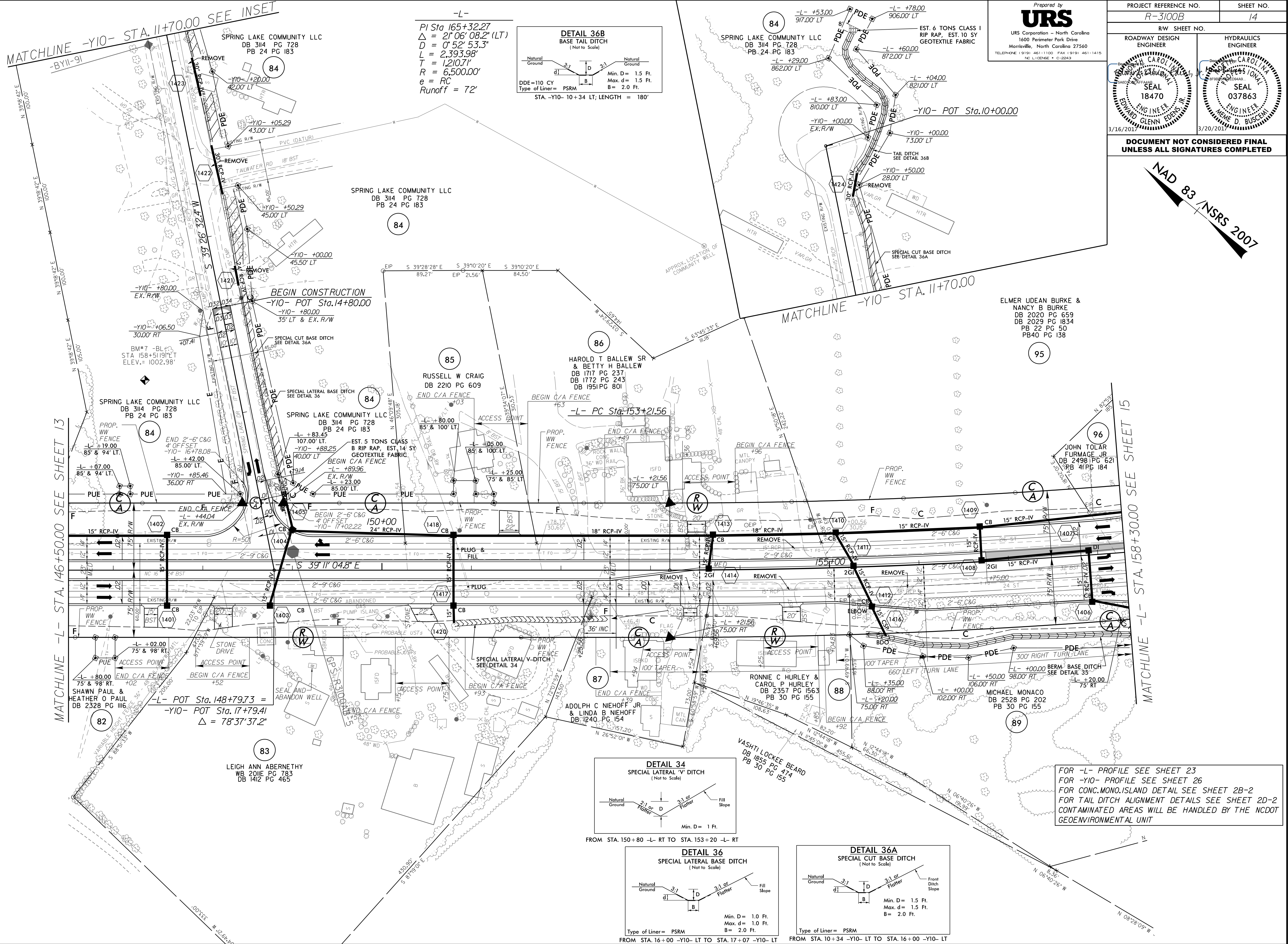
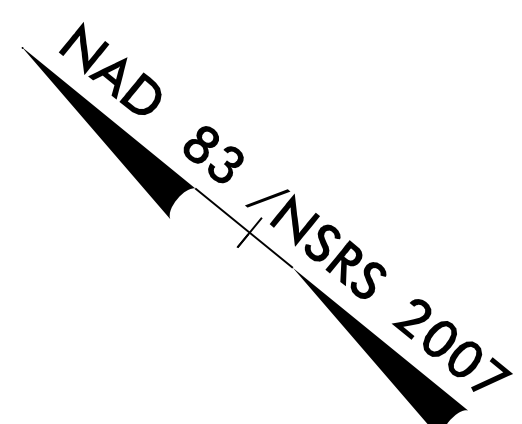
PI Sta 165+32.27
 $\Delta = 21^{\circ}06'08.2''$ (LT)
 $D = 0^{\circ}52'53.3''$
 $L = 2,393.98'$
 $T = 1,210.71'$
 $R = 6,500.00'$
 $e = RC$
Runoff = 72'



Prepared by
URS
URS Corporation - North Carolina
1600 Perimeter Park Drive
Morrisville, North Carolina 27560
TELEPHONE (919) 461-1100 FAX (919) 461-1415
NC LIC# 052624

PROJECT REFERENCE NO. R-3100B	SHEET NO. 14
R/W SHEET NO.	HYDRAULICS ENGINEER
ROADWAY DESIGN ENGINEER	SEAL 18470
EDWARD GLENN EDWARDS JR. ENGINEER 3/16/2017	SEAL 037863 MELODIE D. BUSCEMI ENGINEER 3/20/2017

DOCUMENT NOT CONSIDERED FINAL
UNLESS ALL SIGNATURES COMPLETED



FOR -L- PROFILE SEE SHEET 23
FOR -Y10- PROFILE SEE SHEET 26
FOR CONC. MONO-ISLAND DETAIL SEE SHEET 2B-2
FOR TAIL DITCH ALIGNMENT DETAILS SEE SHEET 2D-2
CONTAMINATED AREAS WILL BE HANDLED BY THE NCDOT
GEOENVIRONMENTAL UNIT

ELMER UDEAN BURKE &
NANCY B BURKE
DB 2020 PG 659
DB 2029 PG 1834
PB 22 PG 50
PB40 PG 138

JOHN TOLAR
FURMAGE JR.
DB 2498 PG 621
PB 41 PG 184

RONNIE C HURLEY &
CAROL P HURLEY
DB 2357 PG 1563
PB 30 PG 155

ADOLPH C NIEHOFF JR
& LINDA B NIEHOFF
DB 1240 PG 154

LEIGH ANN ABERNETHY
WB 2011 PG 783
DB 1412 PG 465

SHAWN PAUL &
HEATHER O PAUL
DB 2328 PG 116

MATCHLINE -L- STA. 146+50.00 SEE SHEET 13

MATCHLINE -L- STA. 158+30.00 SEE SHEET 15