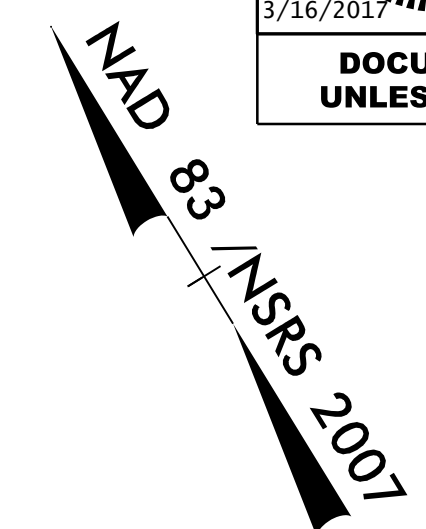


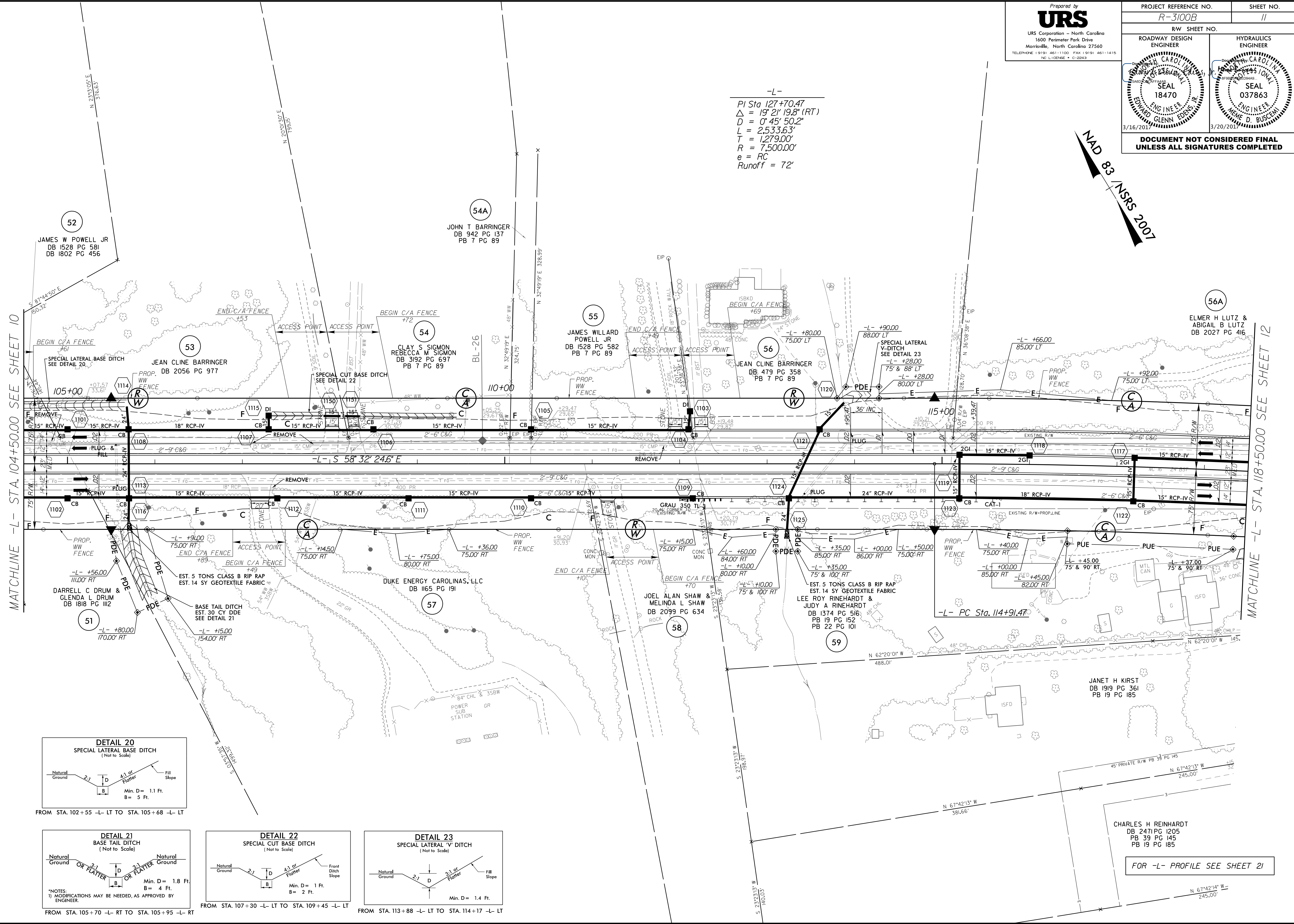
8/17/99

Prepared by
URS
URS Corporation - North Carolina
1600 Perimeter Park Drive
Morrisville, North Carolina 27560
TELEPHONE: (919) 461-1100 FAX: (919) 461-1415
NO. LICENSE: C-22943

PROJECT REFERENCE NO. R-3100B		SHEET NO. 11	
RW SHEET NO. ROADWAY DESIGN ENGINEER		HYDRAULICS ENGINEER	
DOCUMENT NOT CONSIDERED FINAL UNLESS ALL SIGNATURES COMPLETED			



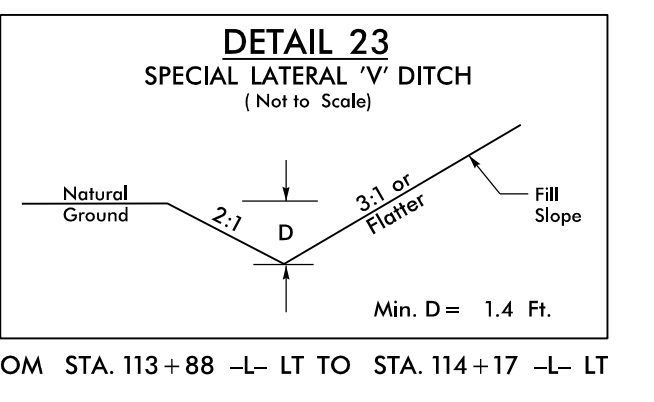
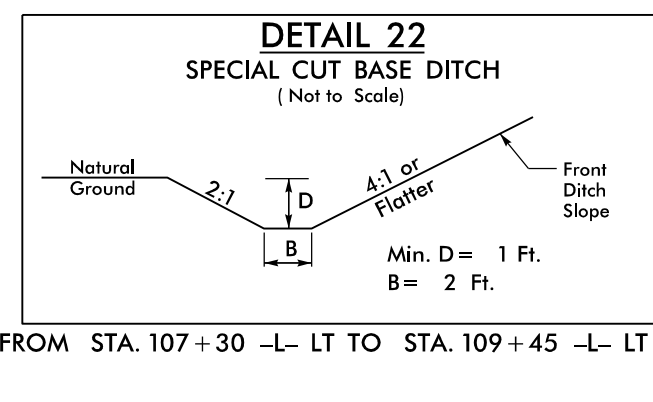
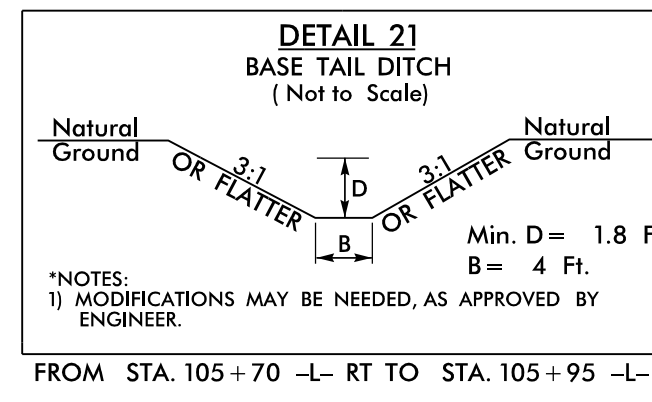
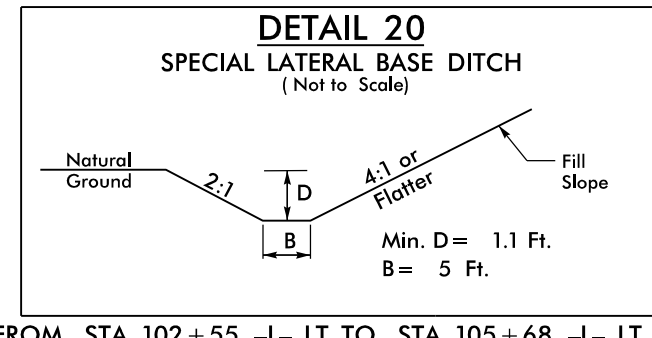
-L-
 PI Sta 127+70.47
 $\Delta = 19' 21'' 19.8'' (RT)$
 $D = 0' 45'' 50.2''$
 $L = 2,533.63'$
 $T = 1,279.00'$
 $R = 7,500.00'$
 $e = RC$
 Runoff = 72'



MATCHLINE -L- STA. 104+50.00 SEE SHEET 10

MATCHLINE -L- STA. 118+50.00 SEE SHEET 12

REVISIONS



*NOTES:
1) MODIFICATIONS MAY BE NEEDED, AS APPROVED BY ENGINEER.

FOR -L- PROFILE SEE SHEET 21

3/16/2017
R:\Roadway\Proj\A-3100b_r.dwg_PSH11.dgn
rscheel