

5/28/2017

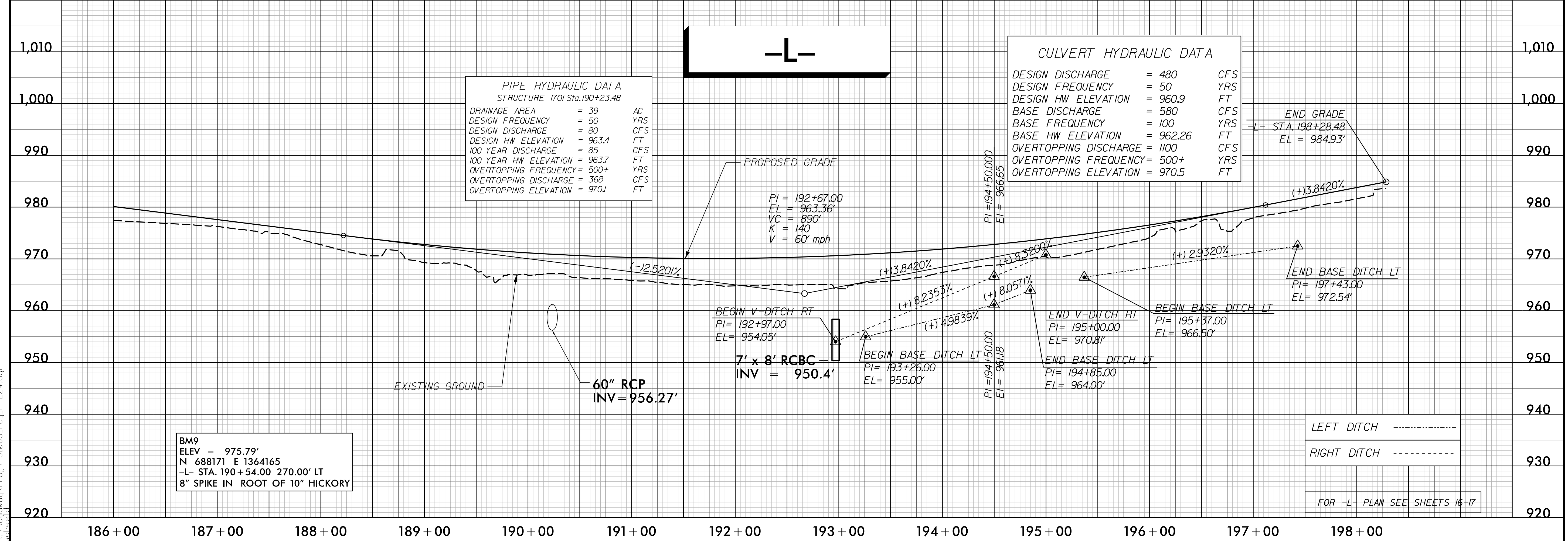
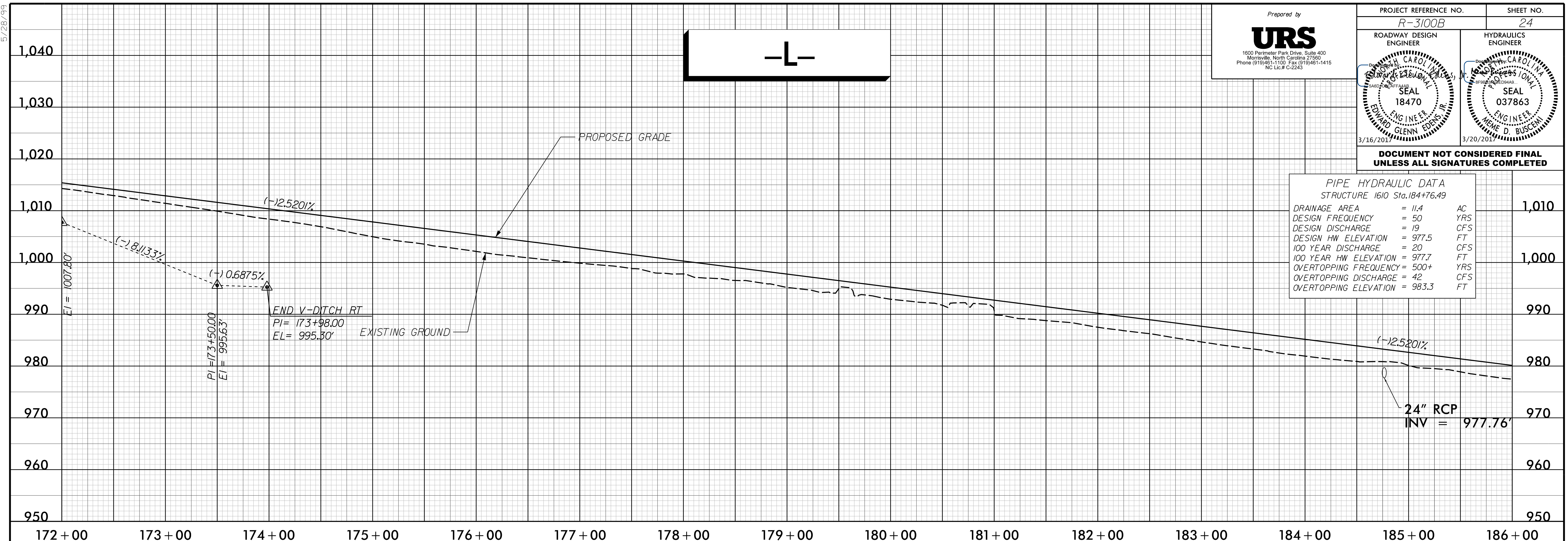
Prepared by
URS
 1600 Perimeter Park Drive, Suite 400
 Morrisville, North Carolina 27560
 Phone (919)461-1100 Fax (919)461-1415
 NC Lic.# C-2243

PROJECT REFERENCE NO. R-3100B	SHEET NO. 24
ROADWAY DESIGN ENGINEER EDWARD GLENZ EDWARDS JR.	HYDRAULICS ENGINEER ANNE D. BUSCENI
SEAL 18470	SEAL 037863
3/16/2017	3/20/2017

**DOCUMENT NOT CONSIDERED FINAL
UNLESS ALL SIGNATURES COMPLETED**

PIPE HYDRAULIC DATA
STRUCTURE 1610 Sta.184+76.49

DRAINAGE AREA	= 11.4	AC
DESIGN FREQUENCY	= 50	YRS
DESIGN DISCHARGE	= 19	CFS
DESIGN HW ELEVATION	= 977.5	FT
100 YEAR DISCHARGE	= 20	CFS
100 YEAR HW ELEVATION	= 977.7	FT
OVERTOPPING FREQUENCY	= 500+	YRS
OVERTOPPING DISCHARGE	= 42	CFS
OVERTOPPING ELEVATION	= 983.3	FT



PIPE HYDRAULIC DATA
STRUCTURE 1701 Sta.190+23.48

DRAINAGE AREA	= 39	AC
DESIGN FREQUENCY	= 50	YRS
DESIGN DISCHARGE	= 80	CFS
DESIGN HW ELEVATION	= 963.4	FT
100 YEAR DISCHARGE	= 85	CFS
100 YEAR HW ELEVATION	= 963.7	FT
OVERTOPPING FREQUENCY	= 500+	YRS
OVERTOPPING DISCHARGE	= 368	CFS
OVERTOPPING ELEVATION	= 970.1	FT

CULVERT HYDRAULIC DATA

DESIGN DISCHARGE	= 480	CFS
DESIGN FREQUENCY	= 50	YRS
DESIGN HW ELEVATION	= 960.9	FT
BASE DISCHARGE	= 580	CFS
BASE FREQUENCY	= 100	YRS
BASE HW ELEVATION	= 962.26	FT
OVERTOPPING DISCHARGE	= 1100	CFS
OVERTOPPING FREQUENCY	= 500+	YRS
OVERTOPPING ELEVATION	= 970.5	FT

BM9
 ELEV = 975.79'
 N 688171 E 1364165
 -L- STA. 190+54.00 270.00' LT
 8" SPIKE IN ROOT OF 10" HICKORY

LEFT DITCH -----
 RIGHT DITCH -----
 FOR -L- PLAN SEE SHEETS 16-17

3/16/2017
 R:\Roadway\ProJ\3100b_rdu_PFL24.dgn
 schmid