

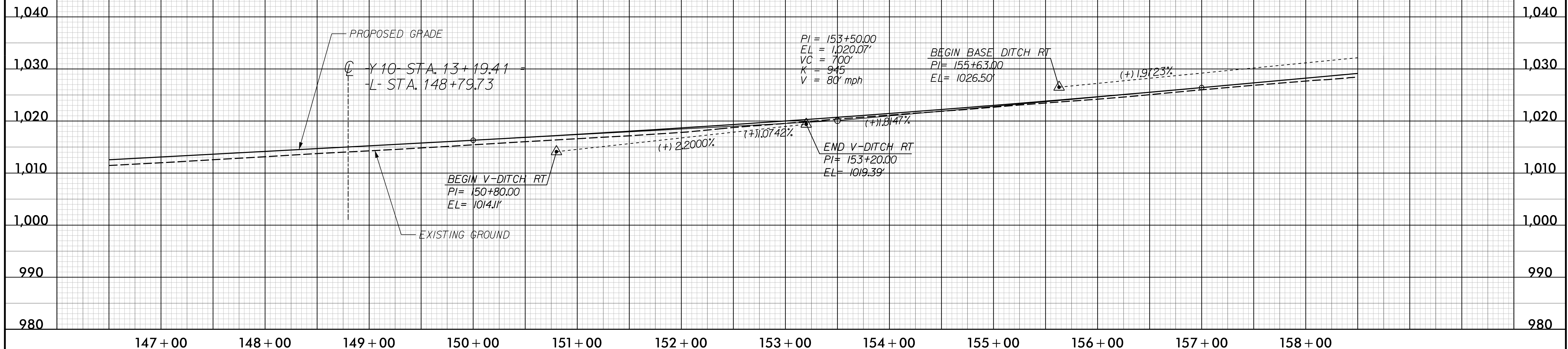
5/28/99

BM7  
ELEV = 1002.98'  
N 690727 E 1360846  
-L- STA. 147 + 35.00 212.00' LT  
8" SPIKE IN ROOT OF 8" ELM

Prepared by  
**URS**  
1600 Perimeter Park Drive, Suite 400  
Morrisville, North Carolina 27560  
Phone (919)461-1100 Fax (919)461-1415  
NC Lic.# C-2243

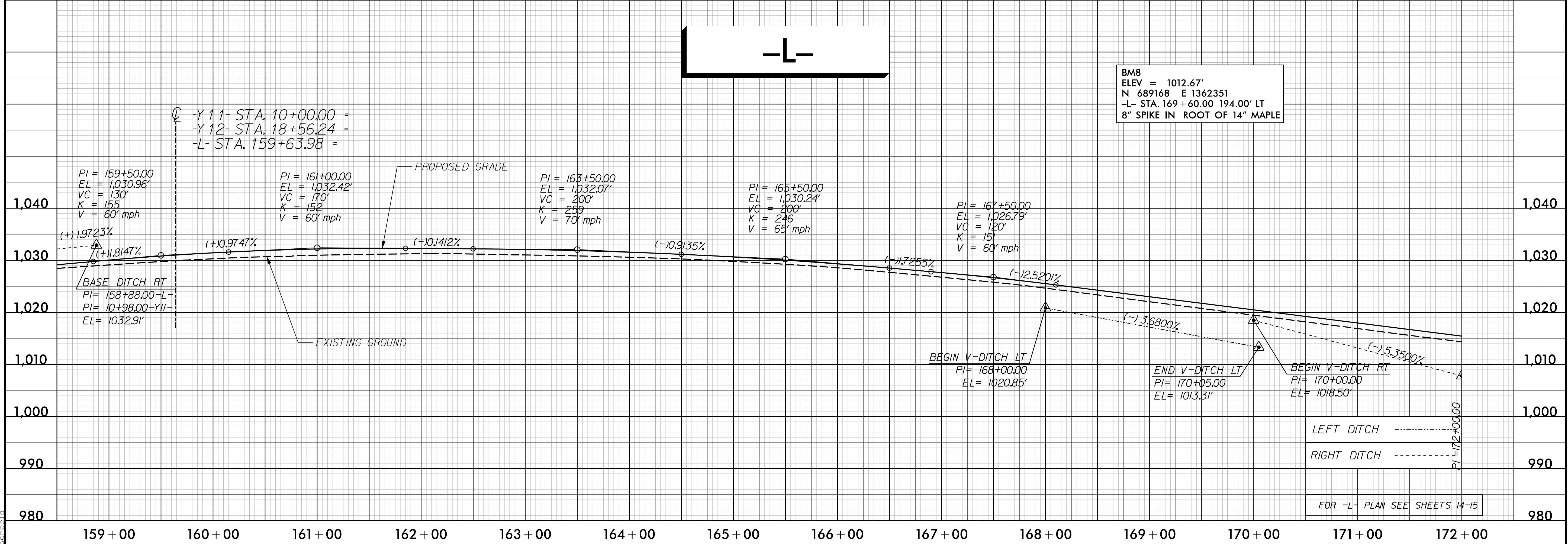
PROJECT REFERENCE NO. <i>R-3100B</i>	SHEET NO. 23
ROADWAY DESIGN ENGINEER <i>EDWARD GLEN</i>	HYDRAULICS ENGINEER <i>ANNE D. BUSCENI</i>
SEAL 18470 3/16/2017	SEAL 037863 3/20/2017

DOCUMENT NOT CONSIDERED FINAL  
UNLESS ALL SIGNATURES COMPLETED



-L-

BM8  
ELEV = 1012.67'  
N 689168 E 1362351  
-L- STA. 169 + 60.00 194.00' RT  
8" SPIKE IN ROOT OF 14" MAPLE



3/16/2017  
R:\Roadway\ProJ\3100b\_rdu\_PFL23.dgn  
sheet14