

5/28/19

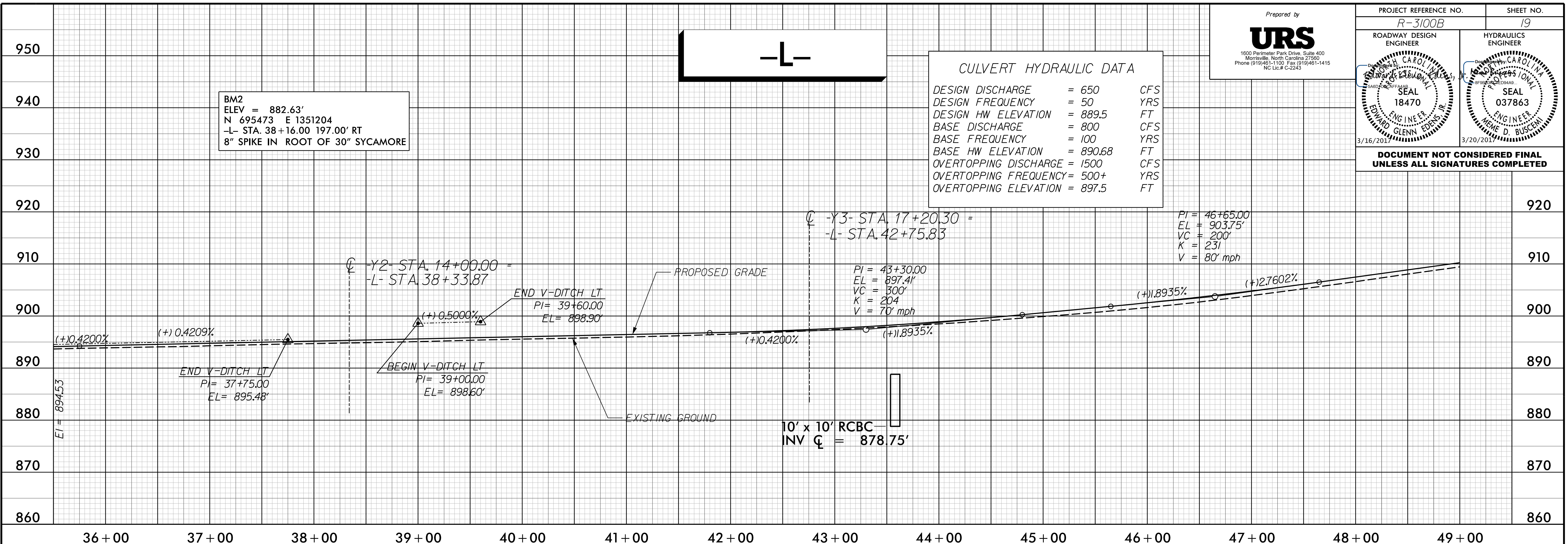
Prepared by  
**URS**  
 1600 Perimeter Park Drive, Suite 400  
 Morrisville, North Carolina 27560  
 Phone (919)461-1100 Fax (919)461-1415  
 NC Lic.# C-2243

PROJECT REFERENCE NO. R-3100B	SHEET NO. 19
ROADWAY DESIGN ENGINEER EDWARD GLEN EDWARDS JR. SEAL 18470 3/16/2017	HYDRAULICS ENGINEER JENNIFER D. BUSCENI SEAL 037863 3/20/2017

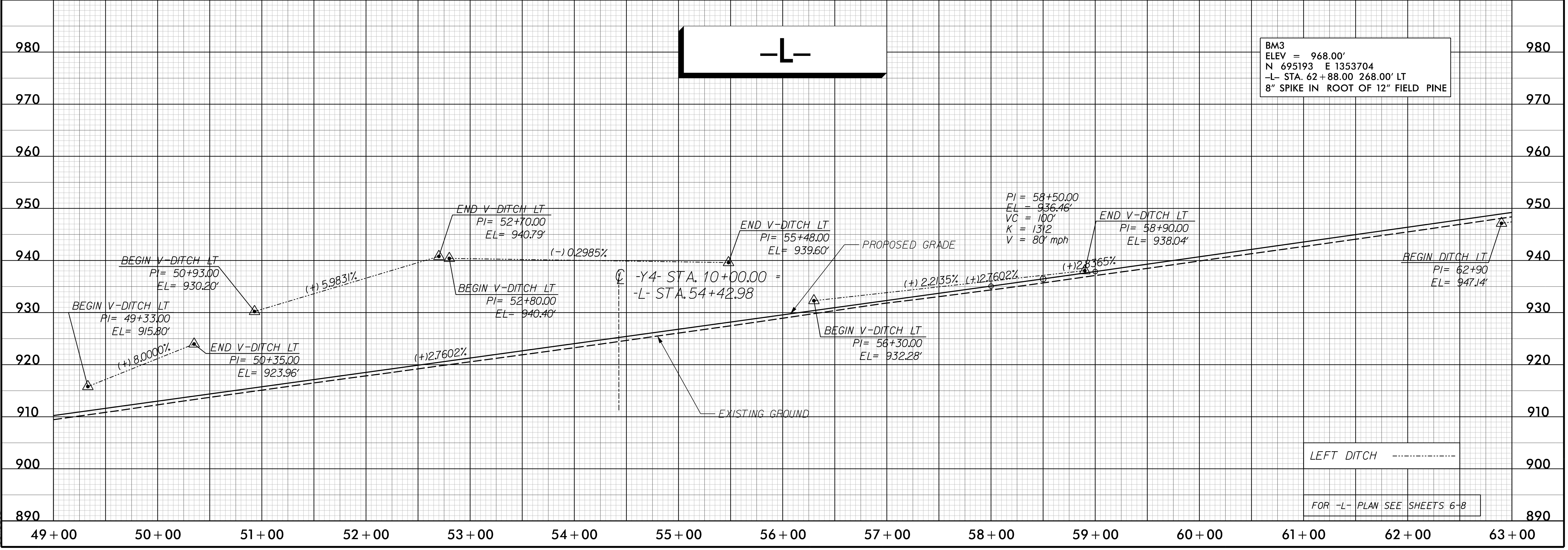
**CULVERT HYDRAULIC DATA**

DESIGN DISCHARGE	= 650	CFS
DESIGN FREQUENCY	= 50	YRS
DESIGN HW ELEVATION	= 889.5	FT
BASE DISCHARGE	= 800	CFS
BASE FREQUENCY	= 100	YRS
BASE HW ELEVATION	= 890.68	FT
OVERTOPPING DISCHARGE	= 1500	CFS
OVERTOPPING FREQUENCY	= 500+	YRS
OVERTOPPING ELEVATION	= 897.5	FT

BM2  
 ELEV = 882.63'  
 N 695473 E 1351204  
 -L- STA. 38+16.00 197.00' RT  
 8" SPIKE IN ROOT OF 30" SYCAMORE



DOCUMENT NOT CONSIDERED FINAL  
 UNLESS ALL SIGNATURES COMPLETED



BM3  
 ELEV = 968.00'  
 N 695193 E 1353704  
 -L- STA. 62+88.00 268.00' LT  
 8" SPIKE IN ROOT OF 12" FIELD PINE

LEFT DITCH -----  
 FOR -L- PLAN SEE SHEETS 6-8

3/16/2017  
 R:\Roadway\Proj\3100b\_rdu\_PFL19.dgn