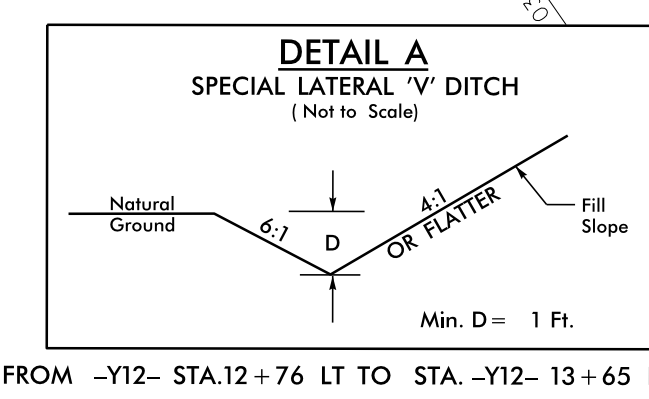


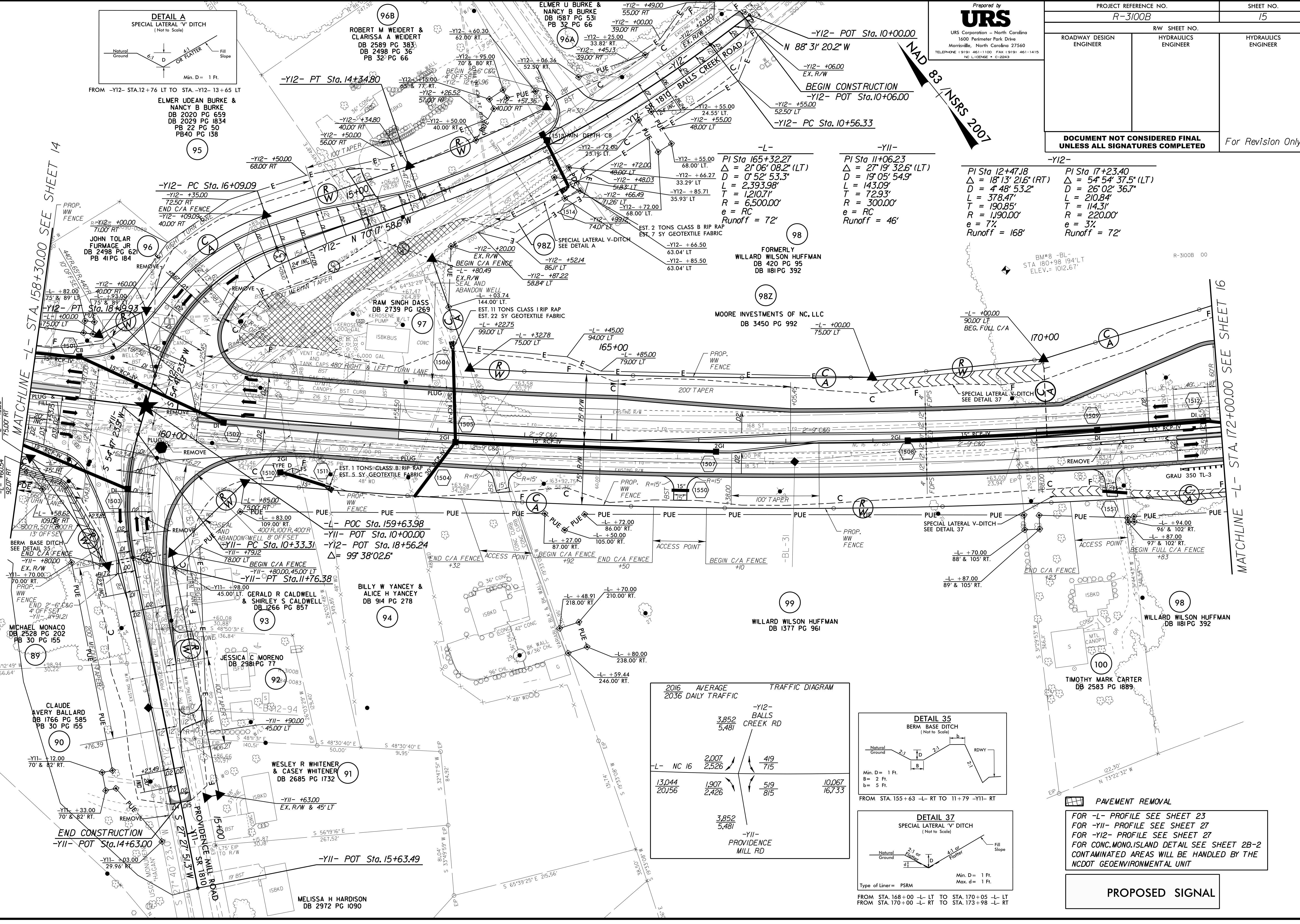
8/17/20

REVISIONS
DATE: 3/18/2020 - CONSTRUCTION REVISION - EXTENDED CURB & GUTTER -Y12- BACK TO 12+46.96 AND ADDED 15' RCP-V AT -Y12- 12+76;
3/18/2020 - R/W REVISION - ADDED PERMANENT DRAINAGE EASEMENT AND TEMPORARY CONSTRUCTION EASEMENT ON PARCEL 98Z
6/10/2020 - R/W REVISION - CHANGED OWNER NAME AND DEED BOOK CALL OUT ON PARCEL 98/98Z



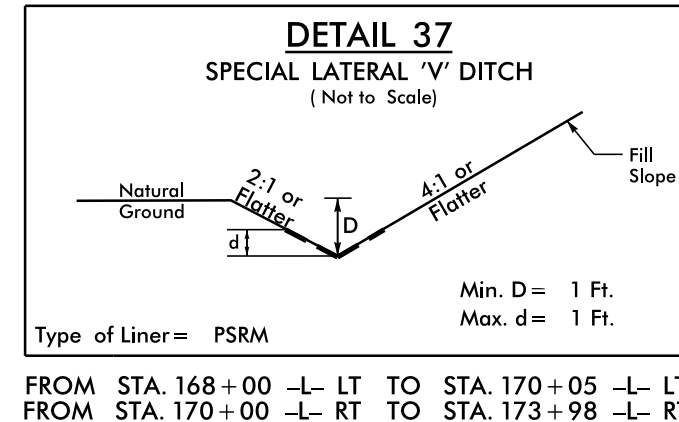
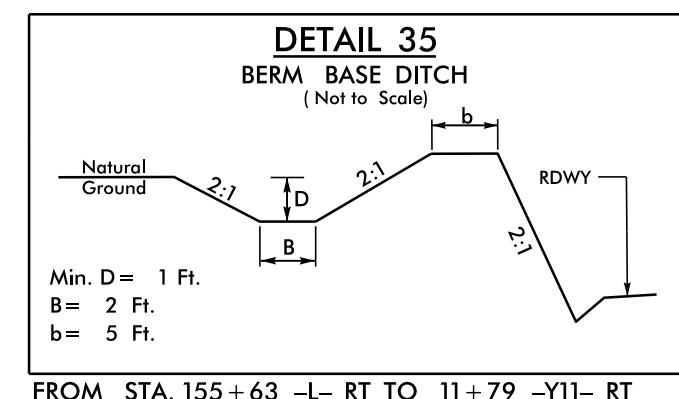
Prepared by
URS
URS Corporation - North Carolina
1600 Perimeter Park Drive
Morrisville, North Carolina 27560
TELEPHONE: (919) 461-1100 FAX: (919) 461-1415
NC LICENSE # C-2243

PROJECT REFERENCE NO.		SHEET NO.
R-3100B		15
RW SHEET NO.		
ROADWAY DESIGN ENGINEER	HYDRAULICS ENGINEER	HYDRAULICS ENGINEER
DOCUMENT NOT CONSIDERED FINAL UNLESS ALL SIGNATURES COMPLETED		
For Revision Only		



2016 AVERAGE TRAFFIC DIAGRAM
2036 DAILY TRAFFIC

-Y12- BALLS CREEK RD	3,852 5,481	419 715
-Y11- PROVIDENCE MILL RD	3,852 5,481	519 815
-Y12- NC 16	2,007 2,526	13,044 20,156
	1,907 2,426	10,067 16,733



PAVEMENT REMOVAL
FOR -L- PROFILE SEE SHEET 23
FOR -Y11- PROFILE SEE SHEET 27
FOR -Y12- PROFILE SEE SHEET 27
FOR CONC. MONO-ISLAND DETAIL SEE SHEET 2B-2
CONTAMINATED AREAS WILL BE HANDLED BY THE
NCDOT GEOENVIRONMENTAL UNIT

PROPOSED SIGNAL

09-JUN-2020 11:55
R:\PROJECTS\3100b_rdu_PSH15.dgn
R:\PROJECTS\3100b_rdu_PSH15.dwg