

8/17/99

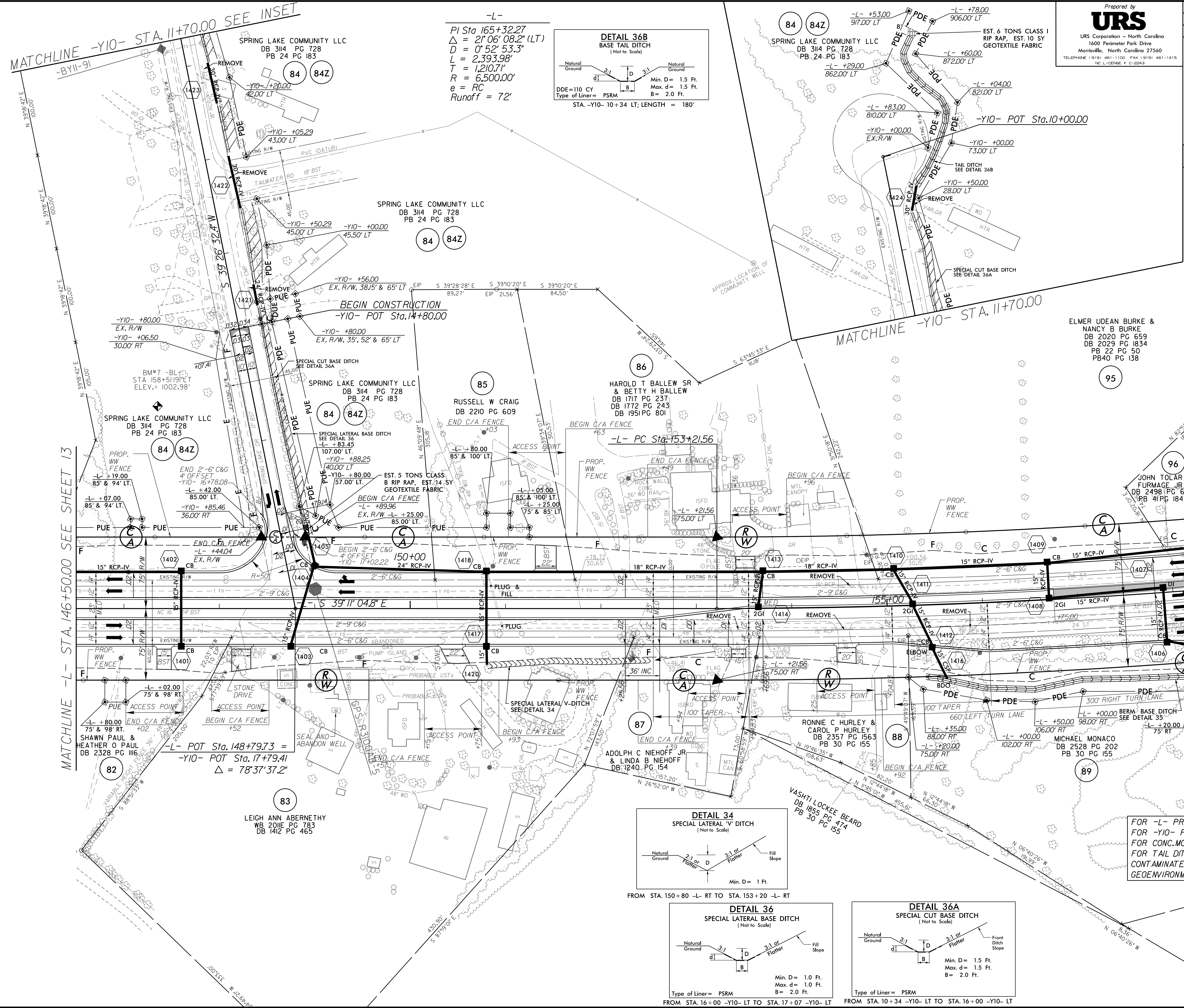
REVISIONS
FROM REV. ON LET PROJECT - APRIL 27, 2017 - REVISED PUE ALONG PARCEL 84 AND ADDED PARCEL NUMBER 84Z (EGE)
FROM REV. ON LET PROJECT - JULY 6, 2017 - ADDED MISSING DUE AND PUE LINES AND A MARKER ON PARCEL 84Z (EGE)

7/5/2017
R:\Roadway\Proj\10\3100b_rdy_PSH14.dgn
schneid

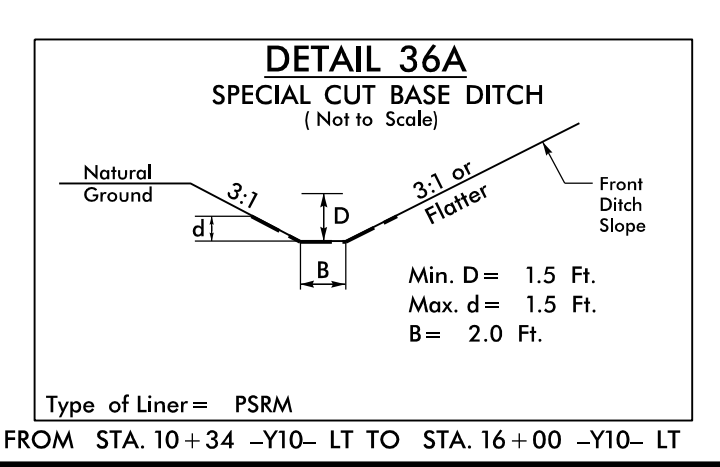
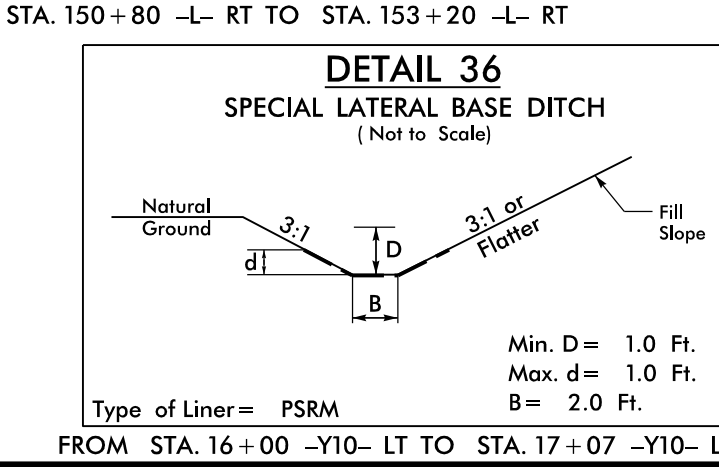
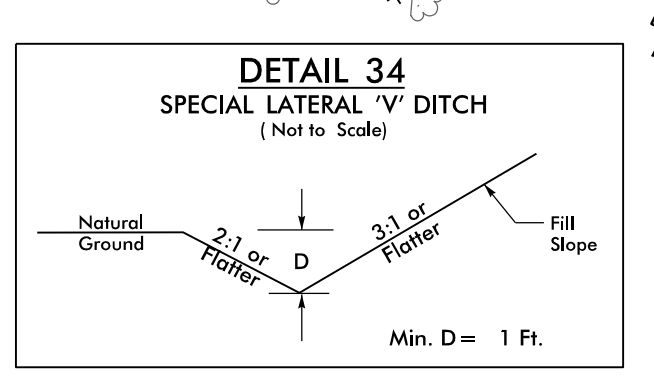
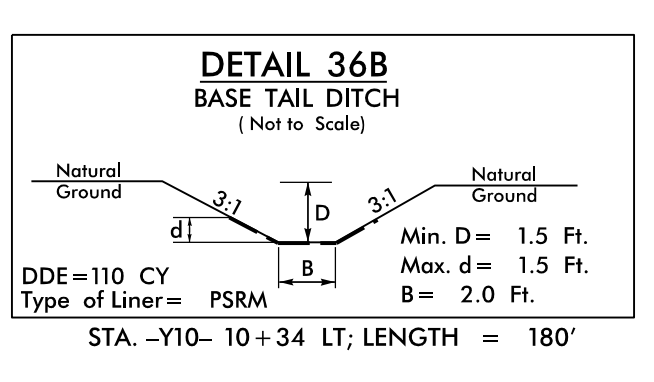
MATCHLINE -Y10- STA. 11+70.00 SEE INSET
-BY11-91

MATCHLINE -L- STA. 146+50.00 SEE SHEET 13

MATCHLINE -L- STA. 158+30.00 SEE SHEET 15



-L-
PI Sta 165+32.27
 $\Delta = 21^{\circ}06'08.2''$ (LT)
 $D = 0^{\circ}52'53.3''$
 $L = 2,393.98'$
 $T = 1,210.71'$
 $R = 6,500.00'$
 $e = RC$
Runoff = 72'

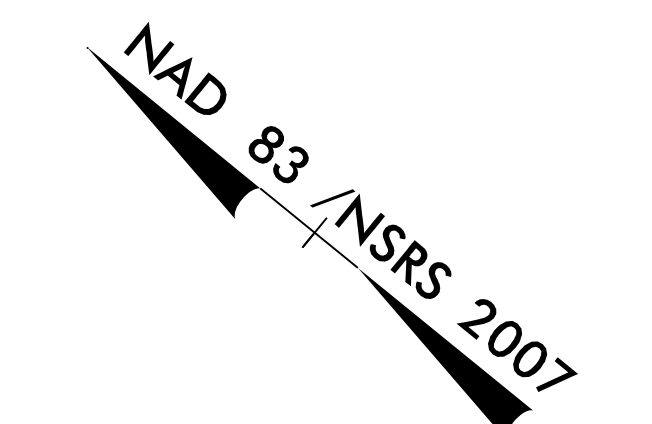


FOR -L- PROFILE SEE SHEET 23
FOR -Y10- PROFILE SEE SHEET 26
FOR CONC. MONO-ISLAND DETAIL SEE SHEET 2B-2
FOR TAIL DITCH ALIGNMENT DETAILS SEE SHEET 2D-2
CONTAMINATED AREAS WILL BE HANDLED BY THE NCDOT
GEOENVIRONMENTAL UNIT



PROJECT REFERENCE NO. R-3100B	SHEET NO. 14
R/W SHEET NO.	HYDRAULICS ENGINEER
ROADWAY DESIGN ENGINEER	THIS DOCUMENT ORIGINALLY ISSUED AND SEALED BY: MEME D. BUSCEMI PE 037863 ON APRIL 27, 2017. THIS MEDIA SHALL NOT BE CONSIDERED A CERTIFIED DOCUMENT.
7/5/2017	

DOCUMENT NOT CONSIDERED FINAL
UNLESS ALL SIGNATURES COMPLETED



ELMER UDEAN BURKE &
NANCY B BURKE
DB 2020 PG 659
DB 2029 PG 1834
PB 22 PG 50
PB40 PG 138

JOHN TOLAR
FURMAGE JR.
DB 2498 PG 621
PB 41 PG 184

RONNIE C HURLEY &
CAROL P HURLEY
DB 2357 PG 1563
PB 30 PG 155

ADOLPH C NIEHOFF JR.
& LINDA B NIEHOFF
DB 1240 PG 154

LEIGH ANN ABERNETHY
WB 2011 PG 783
DB 1412 PG 465

EST. 5 TONS CLASS B
RIP RAP, EST. 14 SY
GEOTEXTILE FABRIC

EST. 6 TONS CLASS I
RIP RAP, EST. 10 SY
GEOTEXTILE FABRIC

SPRING LAKE COMMUNITY LLC
DB 3114 PG 728
PB 24 PG 183

SPRING LAKE COMMUNITY LLC
DB 3114 PG 728
PB 24 PG 183

HAROLD T BALLEW SR
& BETTY H BALLEW
DB 1717 PG 237
DB 1772 PG 243
DB 1951 PG 801

RUSSELL W CRAIG
DB 2210 PG 609