

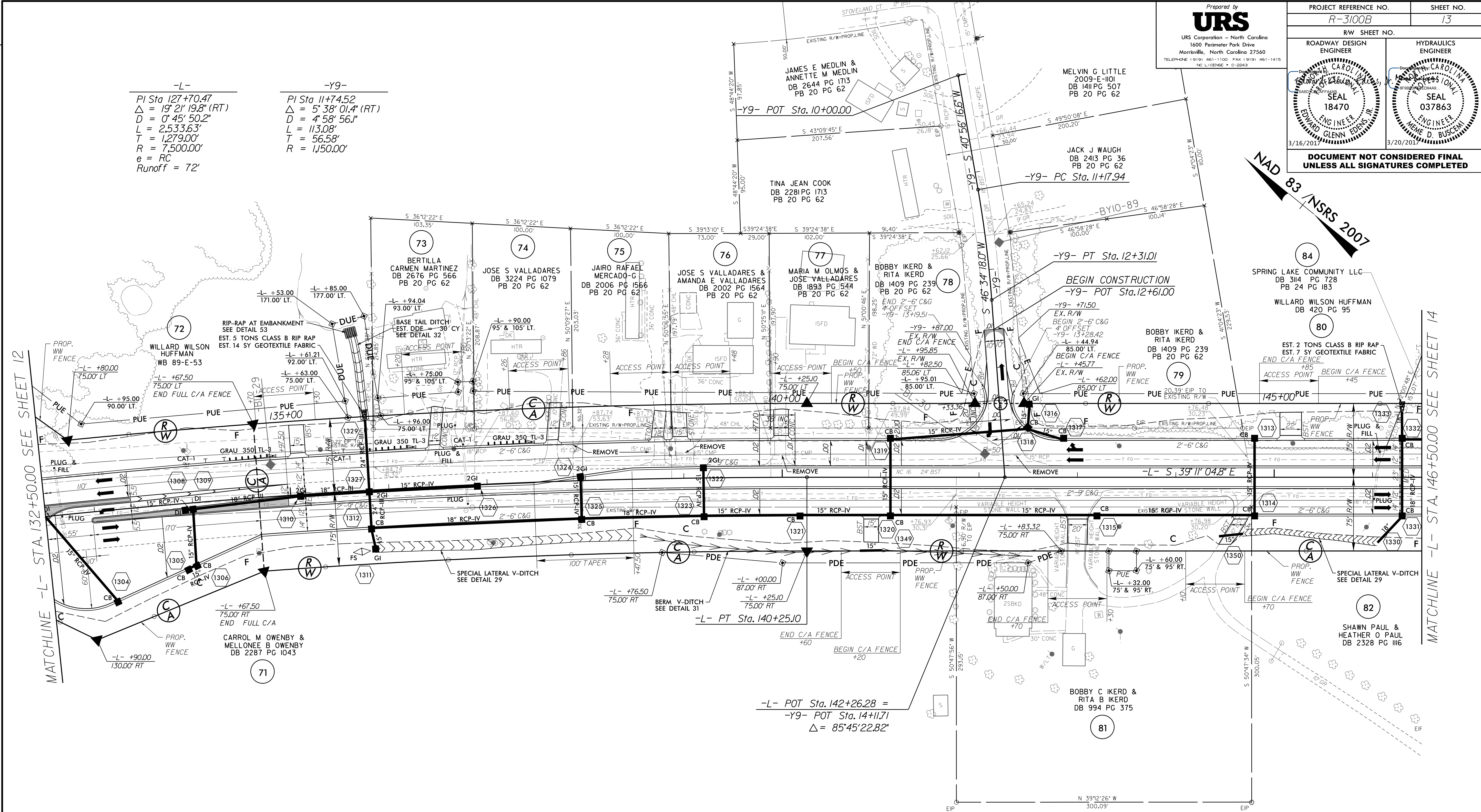
8/17/99

Prepared by  
**URS**  
URS Corporation - North Carolina  
1600 Perimeter Park Drive  
Morrisville, North Carolina 27560  
TELEPHONE (919) 461-1100 FAX (919) 461-1415  
NC LICENSE # C-22943

PROJECT REFERENCE NO. <b>R-3100B</b>	SHEET NO. <b>13</b>
R/W SHEET NO. ROADWAY DESIGN ENGINEER	HYDRAULICS ENGINEER
DOCUMENT NOT CONSIDERED FINAL UNLESS ALL SIGNATURES COMPLETED	

**-L-**  
PI Sta 127+70.47  
 $\Delta = 19' 21'' 19.8''$  (RT)  
D = 0' 45' 50.2"  
L = 2,533.63'  
T = 1,279.00'  
R = 7,500.00'  
e = RC  
Runoff = 72'

**-Y9-**  
PI Sta 11+74.52  
 $\Delta = 5' 38'' 01.4''$  (RT)  
D = 4' 58' 56.1"  
L = 113.08'  
T = 56.58'  
R = 1,150.00'

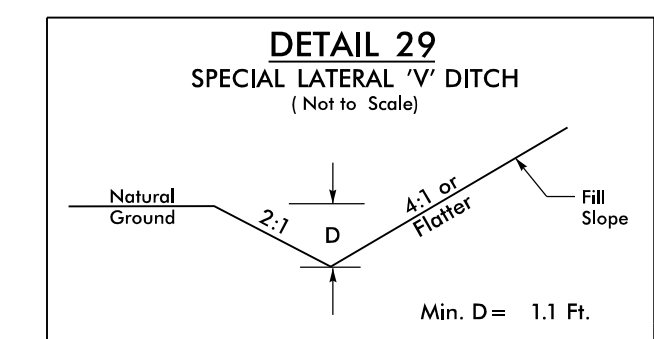


REVISIONS

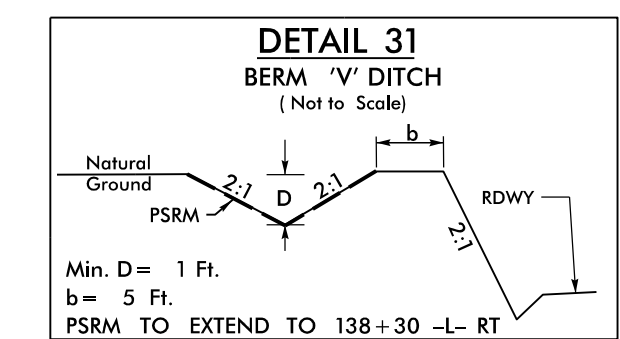
MATCHLINE -L- STA. 132+50.00 SEE SHEET 12

MATCHLINE -L- STA. 146+50.00 SEE SHEET 14

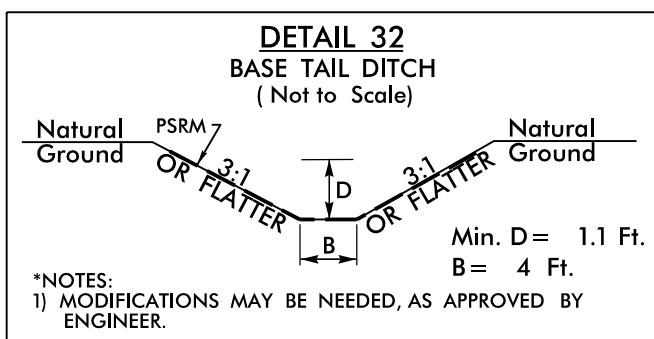
NAD 83 / NSRS 2007



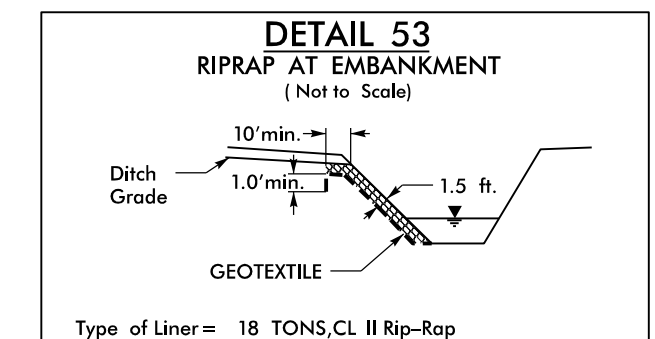
FROM STA. 135+83 -L- RT TO STA. 138+50 -L- RT  
FROM STA. 144+68 -L- RT TO STA. 146+05 -L- RT



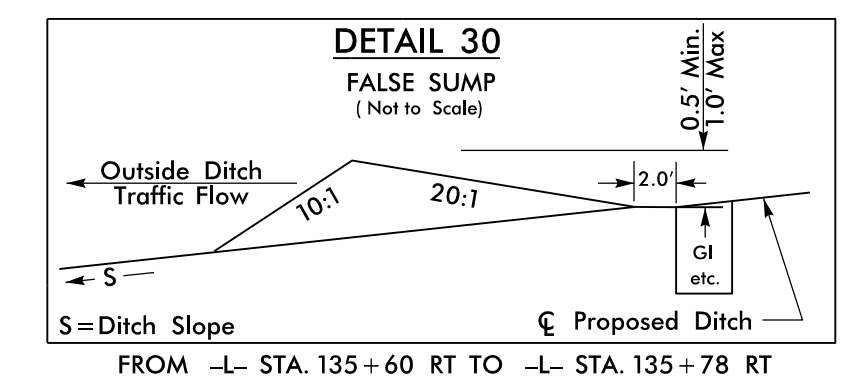
FROM STA. 138+50 -L- RT TO STA. 142+53 -L- RT



FROM STA. 135+70 -L- RT TO STA. 135+80 -L- RT



FROM STA. 135+70 -L- LT TO STA. 135+80 -L- LT



FOR -L- PROFILE SEE SHEET 22  
FOR -Y9- PROFILE SEE SHEET 26  
FOR CONC. MONOISLAND DETAIL SEE SHEET 2B-1

3/16/2017  
R:\Roadway\Proj\13100b\_rdy\_PSH13.dgn  
rscheid