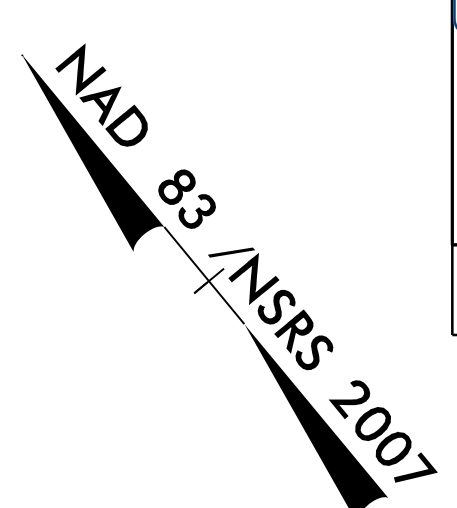


8/17/99

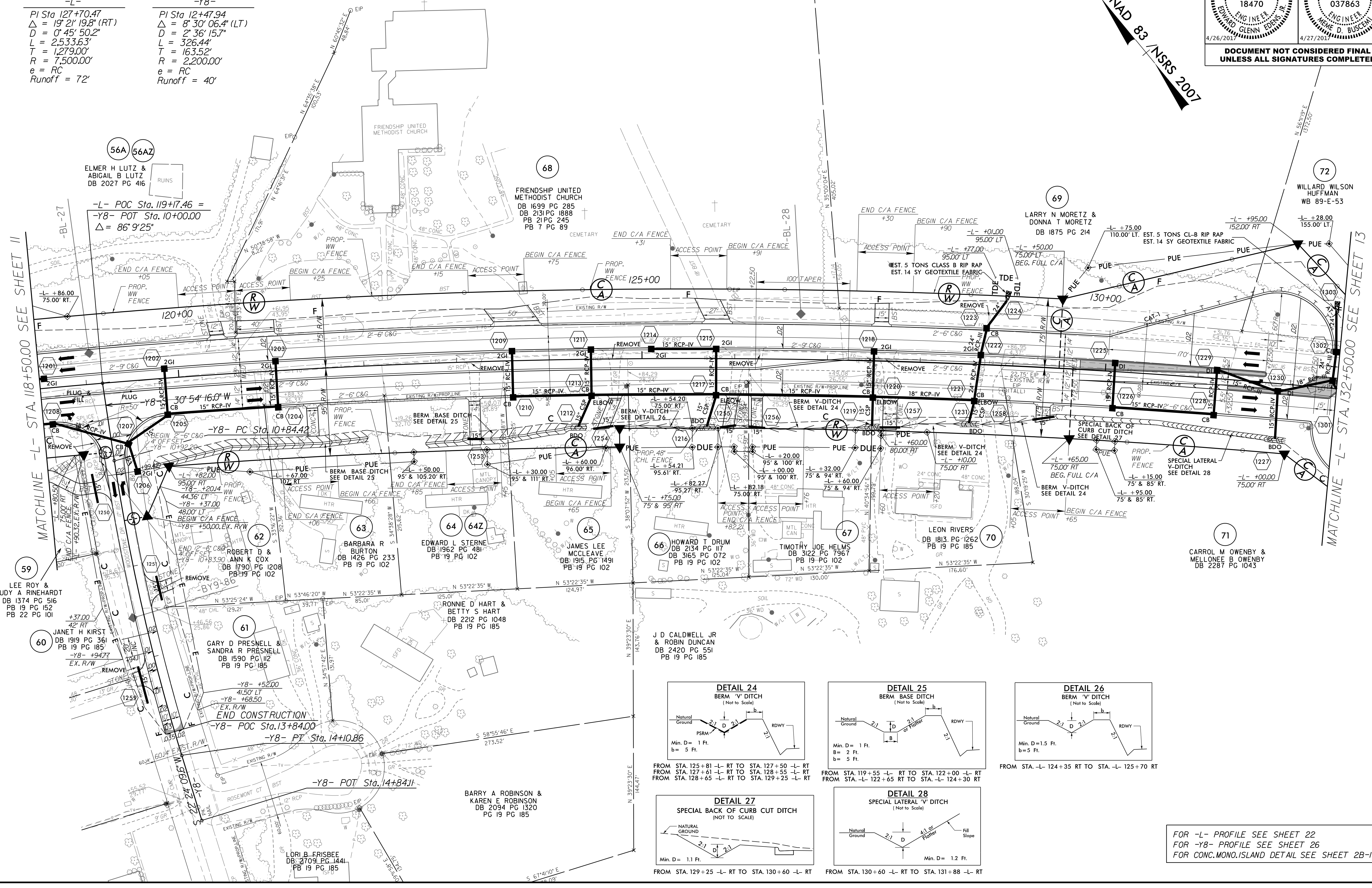
Prepared by
URS
URS Corporation - North Carolina
1600 Perimeter Park Drive
Morrisville, North Carolina 27560
TELEPHONE (919) 461-1100 FAX (919) 461-1415
NC LICENSE # C-22943

PROJECT REFERENCE NO. R-3100B	SHEET NO. 12
R/W SHEET NO. ROADWAY DESIGN ENGINEER	HYDRAULICS ENGINEER
DOCUMENT NOT CONSIDERED FINAL UNLESS ALL SIGNATURES COMPLETED	



-L-
PI Sta 127+70.47
 $\Delta = 19' 21'' 19.8''$ (RT)
D = 0' 45' 50.2"
L = 2,533.63'
T = 1,279.00'
R = 7,500.00'
e = RC
Runoff = 72'

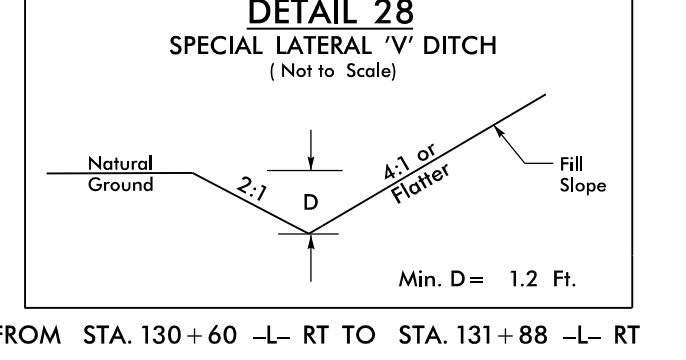
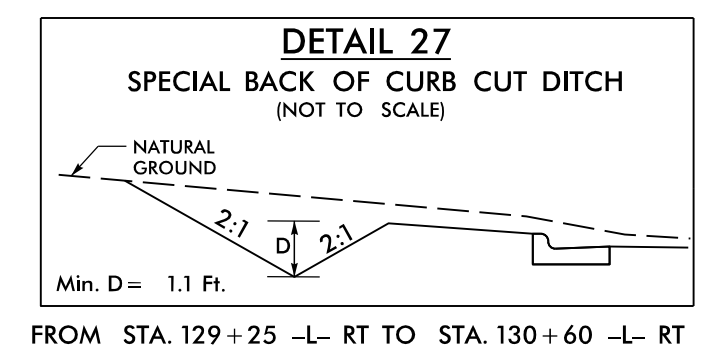
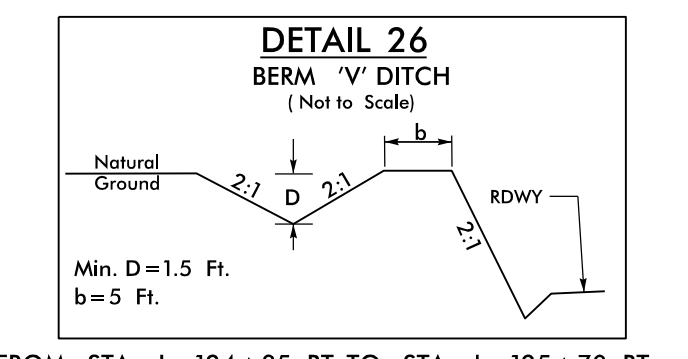
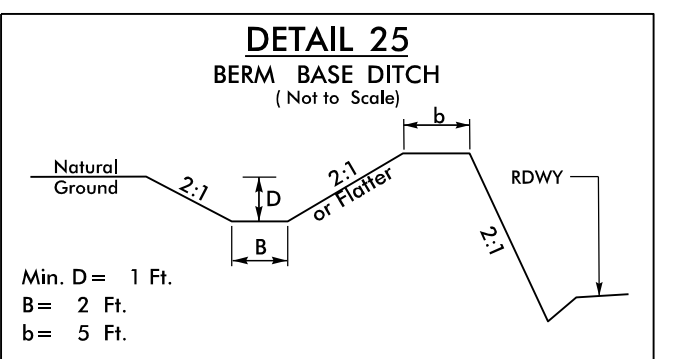
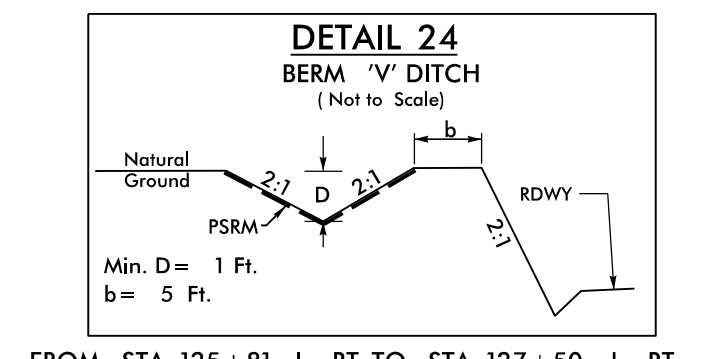
-Y8-
PI Sta 12+47.94
 $\Delta = 8' 30'' 06.4''$ (LT)
D = 2' 36' 15.7"
L = 326.44'
T = 163.52'
R = 2,200.00'
e = RC
Runoff = 40'



REVISIONS
FROM REV. ON LET PROJECT - APRIL 27, 2017 - REVISED PUE ALONG PAVEL 56A, 62, 63, 64, AND ADDED PARCEL NUMBERS 56AZ AND 64Z (EGE)

MATCHLINE -L- STA. 118+50.00 SEE SHEET 11

MATCHLINE -L- STA. 132+50.00 SEE SHEET 13



FOR -L- PROFILE SEE SHEET 22
FOR -Y8- PROFILE SEE SHEET 26
FOR CONC. MONO. ISLAND DETAIL SEE SHEET 2B-1

4/26/2017
R:\Roadway\Proj\A-3100b_rdy_PSH12.dgn
rscheid