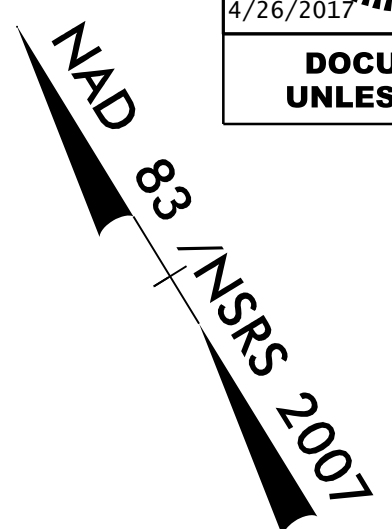


8/17/99

Prepared by
URS
URS Corporation - North Carolina
1600 Perimeter Park Drive
Morrisville, North Carolina 27560
TELEPHONE: (919) 461-1100 FAX: (919) 461-1415
NO. LICENSE: C-22943

PROJECT REFERENCE NO. R-3100B		SHEET NO. 11	
RW SHEET NO.		HYDRAULICS ENGINEER	
ROADWAY DESIGN ENGINEER		SEAL 18470 ENGINEER EDWARD GLENN EDWARDS JR. 4/26/2017	
		SEAL 037863 ENGINEER MELINDA D. BUSCH 4/27/2017	
DOCUMENT NOT CONSIDERED FINAL UNLESS ALL SIGNATURES COMPLETED			



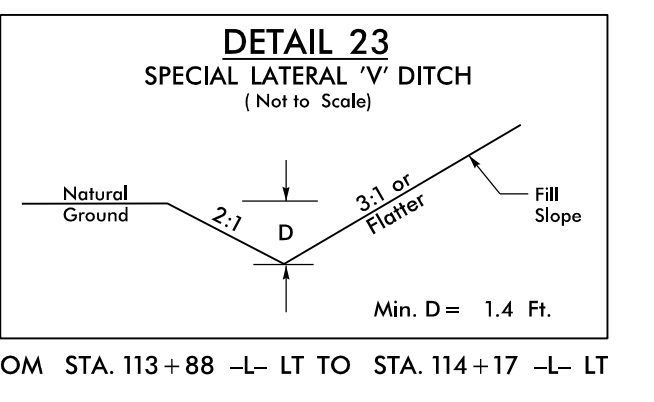
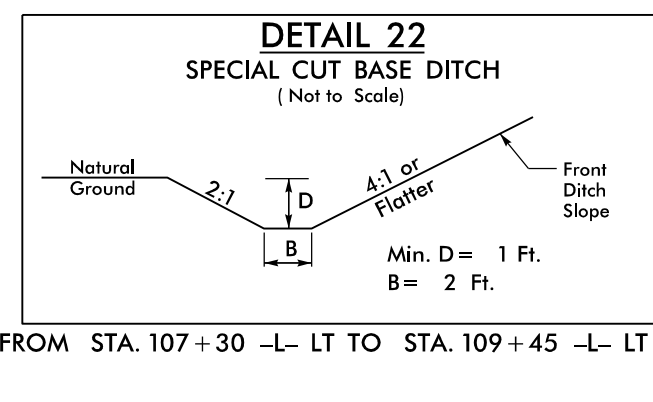
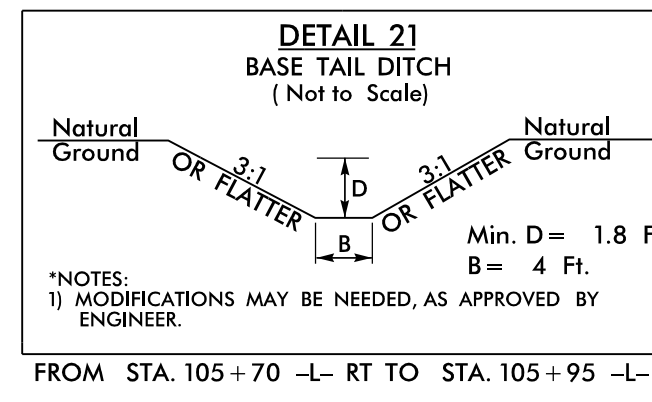
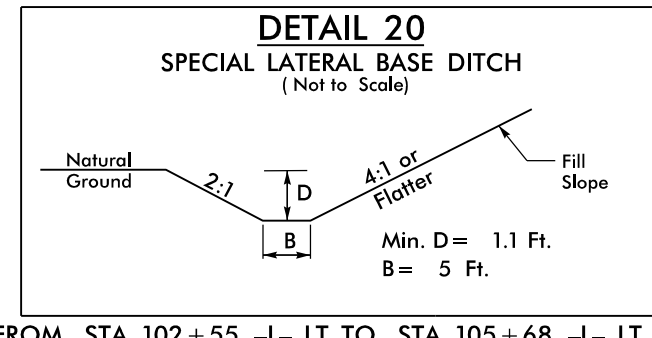
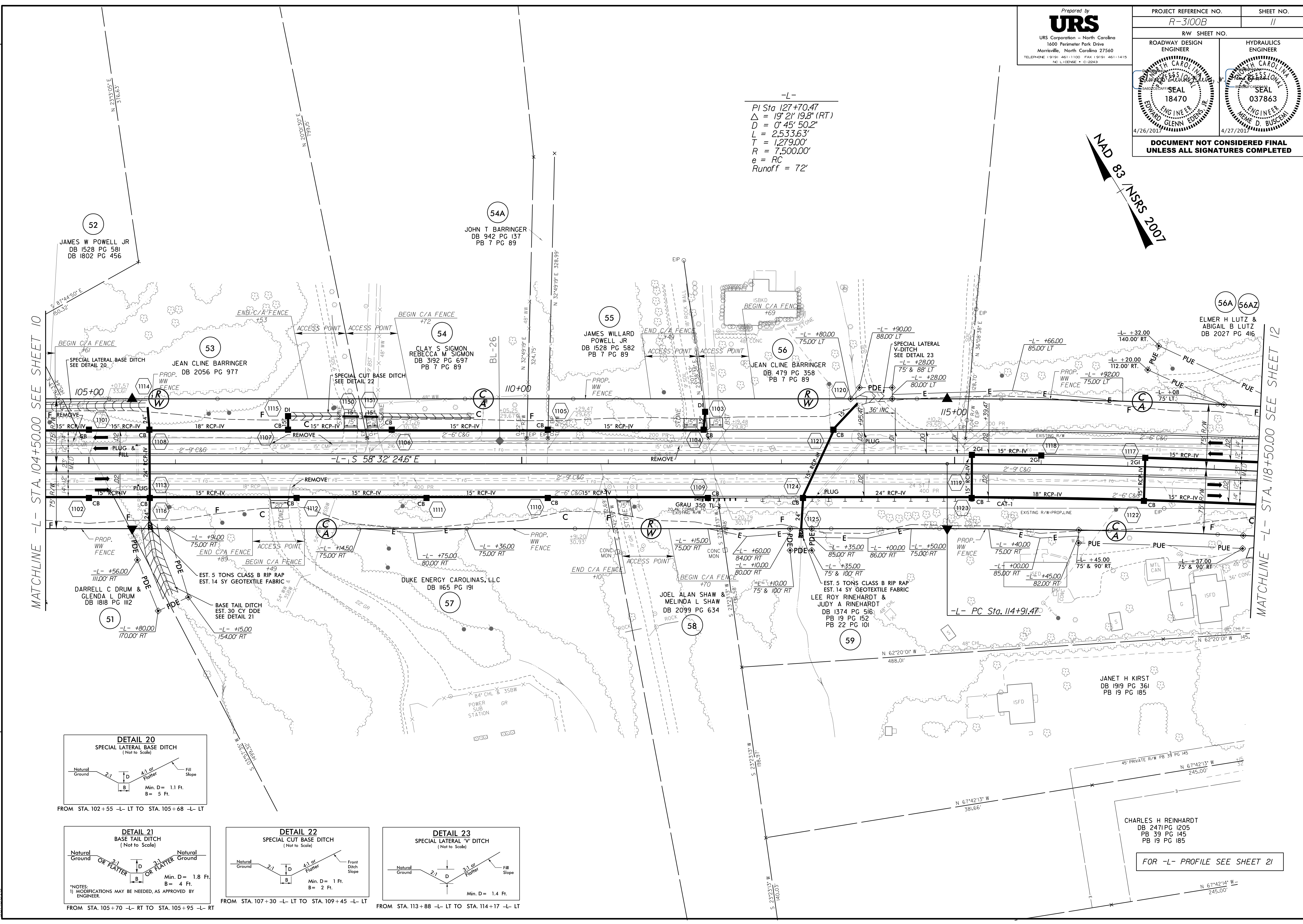
-L-

PI Sta 127+70.47
 $\Delta = 19^\circ 21' 19.8" (RT)$
 $D = 0^\circ 45' 50.2"$
 $L = 2,533.63'$
 $T = 1,279.00'$
 $R = 7,500.00'$
 $e = RC$
 $Runoff = 72'$

ROW REV. ON LET. PROJECT - APRIL 27, 2017 - REVISED PUE ALONG PACEL 56A AND ADDED PARCEL NUMBER 56AZ (EGE)

MATCHLINE -L- STA. 104+50.00 SEE SHEET 10

MATCHLINE -L- STA. 118+50.00 SEE SHEET 12



*NOTES:
1) MODIFICATIONS MAY BE NEEDED, AS APPROVED BY ENGINEER.

4/26/2017
R:\Roadway\Proj\A-3100b_r.dwg_PSH11.dgn
rscheid