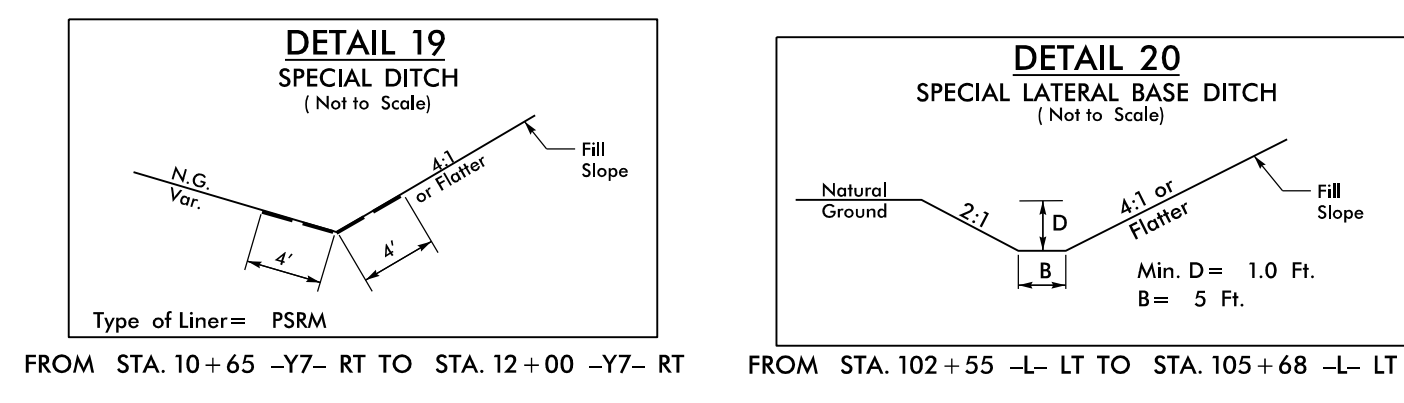


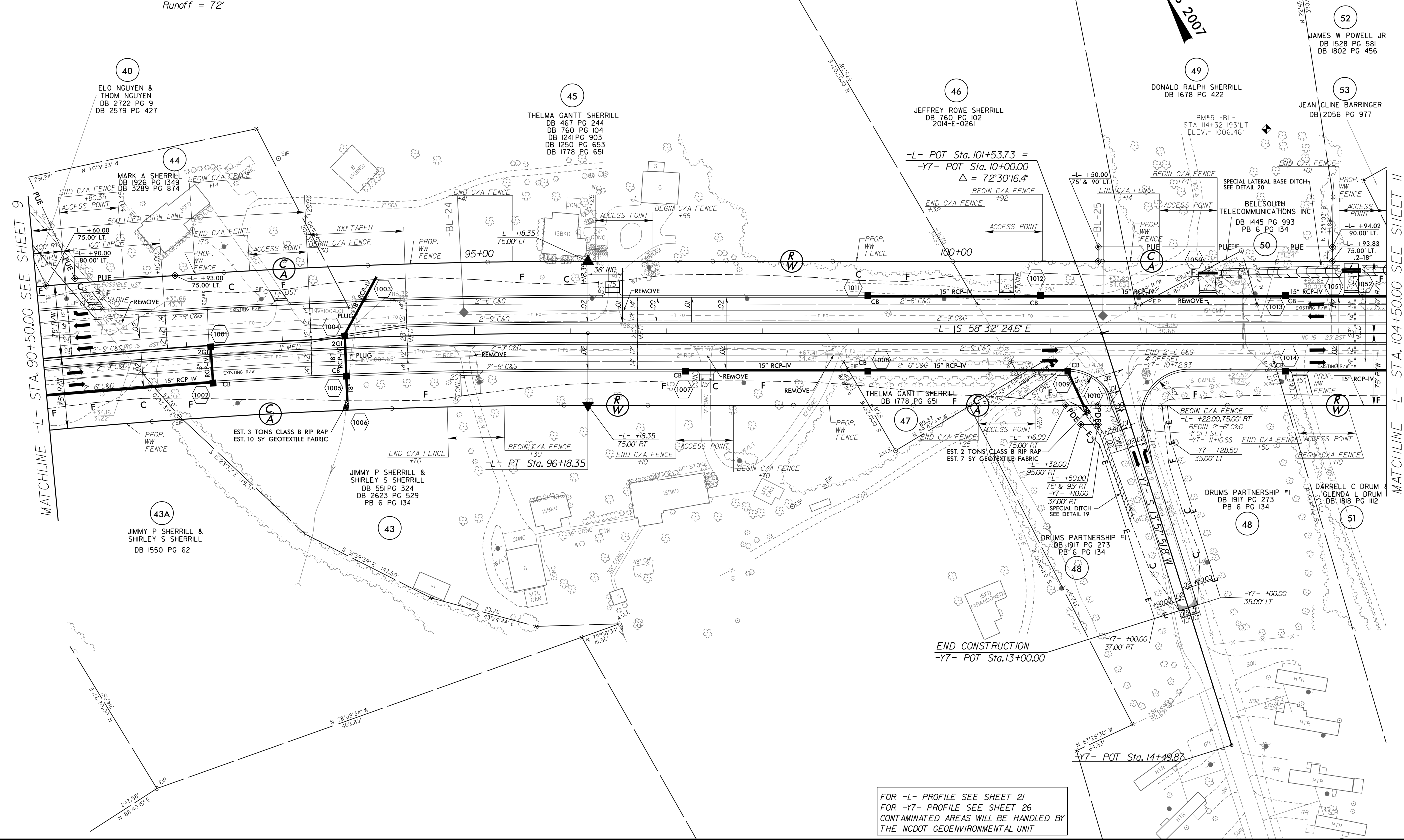
8/17/99

Prepared by
URS
URS Corporation - North Carolina
1600 Perimeter Park Drive
Morrisville, North Carolina 27560
TELEPHONE: (919) 461-1100 FAX: (919) 461-1415
NO. L10266E • C-2243

PROJECT REFERENCE NO. R-3100B		SHEET NO. 10	
RW SHEET NO.		HYDRAULICS ENGINEER	
ROADWAY DESIGN ENGINEER		SEAL 037863 ENGINEER MEME D. BUSCENI 3/20/2017	
SEAL 18470 ENGINEER EDWARD GLENN EDWARDS JR. 3/16/2017		DOCUMENT NOT CONSIDERED FINAL UNLESS ALL SIGNATURES COMPLETED	



-L-
PI Sta 88+49.20
 $\Delta = 14' 24'' 28.5'' (RT)$
 $D = 0' 55'' 53.9''$
 $L = 1,546.51'$
 $T = 777.36'$
 $R = 6,150.00'$
 $e = RC$
Runoff = 72'



40
ELO NGUYEN &
THOM NGUYEN
DB 2722 PG 9
DB 2579 PG 427

45
THELMA GANTT SHERRILL
DB 467 PG 244
DB 760 PG 104
DB 1241 PG 903
DB 1250 PG 653
DB 1778 PG 651

46
JEFFREY ROWE SHERRILL
DB 760 PG 102
2014-E-0261

49
DONALD RALPH SHERRILL
DB 1678 PG 422

53
JEAN CLINE BARRINGER
DB 2056 PG 977

43A
JIMMY P SHERRILL &
SHIRLEY S SHERRILL
DB 1550 PG 62

43
JIMMY P SHERRILL &
SHIRLEY S SHERRILL
DB 551 PG 324
DB 2623 PG 529
PB 6 PG 134

47
THELMA GANTT SHERRILL
DB 1778 PG 651

48
DRUMS PARTNERSHIP #1
DB 1917 PG 273
PB 6 PG 134

48
DRUMS PARTNERSHIP #1
DB 1917 PG 273
PB 6 PG 134

51
DARRELL C DRUM
GLENDIA L DRUM
DB 1818 PG 112

3/16/2017
R:\Roadway\Pro\A-3100b_r.dwg_PSH110.dgn
schneid