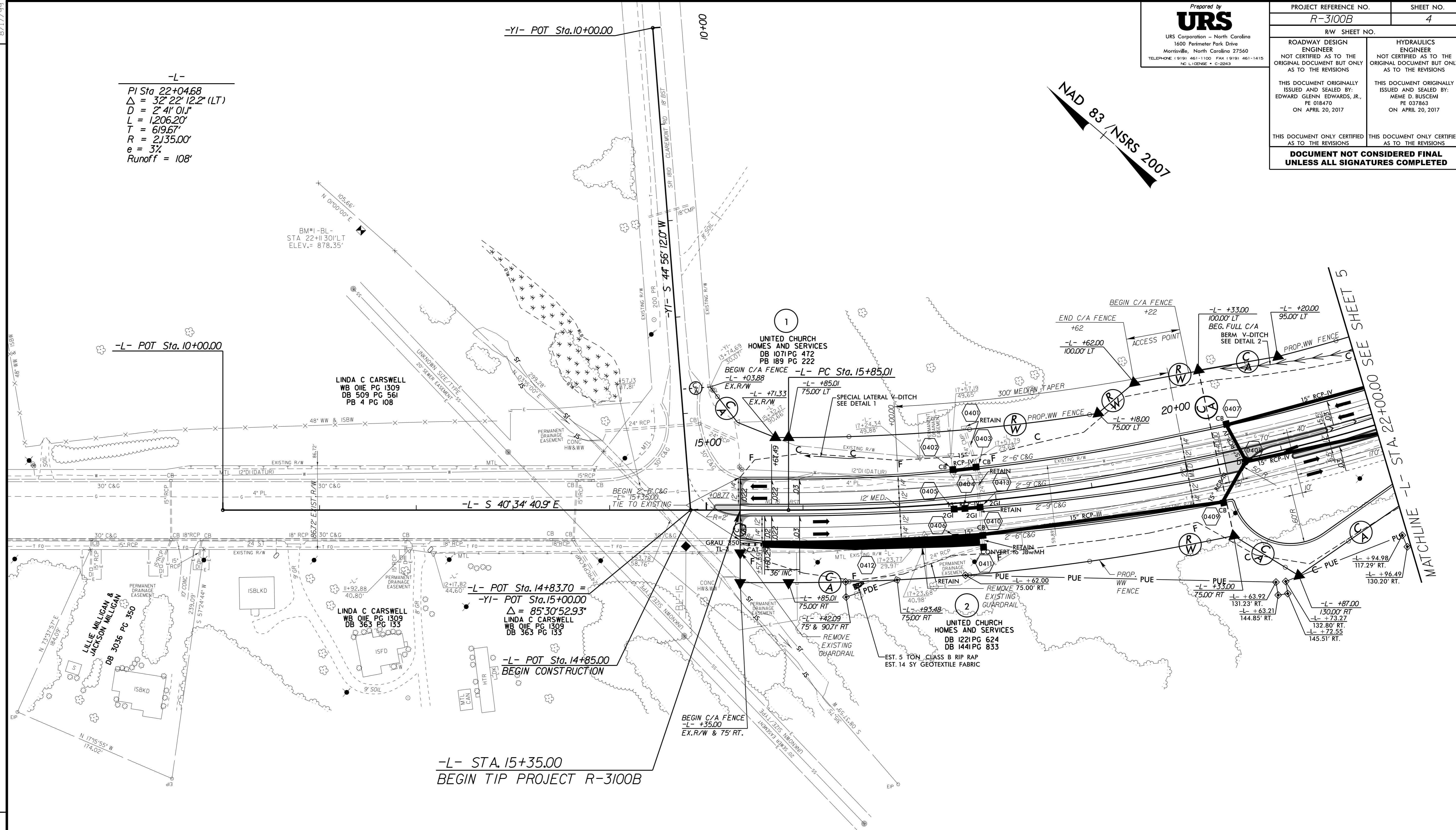


PROJECT REFERENCE NO. R-3100B	SHEET NO. 4
RW SHEET NO.	
ROADWAY DESIGN ENGINEER NOT CERTIFIED AS TO THE ORIGINAL DOCUMENT BUT ONLY AS TO THE REVISIONS	HYDRAULICS ENGINEER NOT CERTIFIED AS TO THE ORIGINAL DOCUMENT BUT ONLY AS TO THE REVISIONS
THIS DOCUMENT ORIGINALLY ISSUED AND SEALED BY: EDWARD GLENN EDWARDS, JR., PE 018470 ON APRIL 20, 2017	THIS DOCUMENT ORIGINALLY ISSUED AND SEALED BY: MEME D. BUSCEMI, PE 037863 ON APRIL 20, 2017
THIS DOCUMENT ONLY CERTIFIED AS TO THE REVISIONS	THIS DOCUMENT ONLY CERTIFIED AS TO THE REVISIONS
DOCUMENT NOT CONSIDERED FINAL UNLESS ALL SIGNATURES COMPLETED	

NAD 83 / NSRS 2007

-L-
 PI Sta. 22+04.68
 $\Delta = 32^\circ 22' 12.2" (LT)$
 $D = 2' 41" 01.1"$
 $L = 1,206.20'$
 $T = 619.67'$
 $R = 2,135.00'$
 $e = 3\%$
 Runoff = 108'

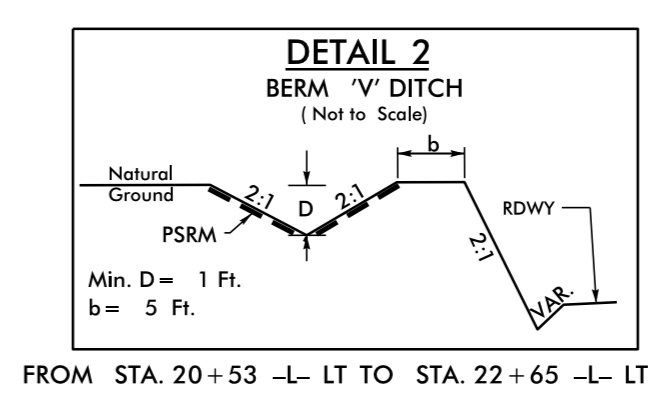
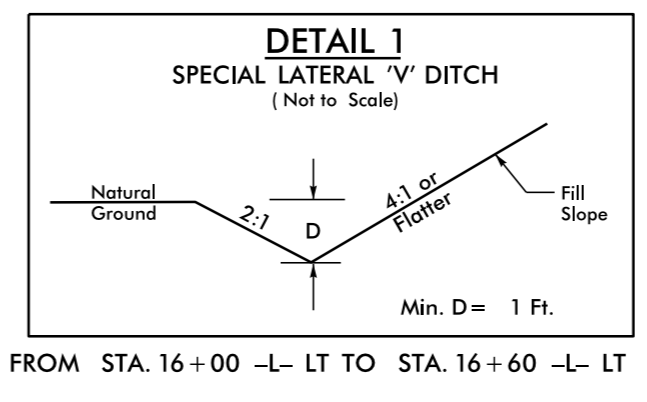


REVISIONS
 ROW REV. ON LET PROJECT - APRIL 20, 2017 - REVISED PUE ALONG PACEL 2 (EGE)
 ROW REV. ON LET PROJECT - SEPTEMBER 11, 2020 - ADDED AN ACCESS BREAK ON PARCEL 1 FROM -L- STATION 19+62 TO 20+22. (TLW)

I:\SEP-2020\09-30\1000b-r.dwg_PSH04.dgn
 9/30/2020 10:39 AM

-L- POT Sta. 14+83.70 =
-YI- POT Sta. 15+00.00
 $\Delta = 85^\circ 30' 52.93"$
 LINDA C CARSWELL
 WB 0116 PG 1309
 DB 363 PG 133

-L- STA. 15+35.00
BEGIN TIP PROJECT R-3100B



FOR -L- PROFILE SEE SHEET 18
 FOR CONC. MONO. ISLAND DETAIL SEE SHEET 2B-1