

44 x 29 x 3
1.5 inch Skimmer
with 1.25 inch
Orifice Diameter
19 ft. weir
(See Tiered Skimmer
Basin Detail)
ID 20.1F

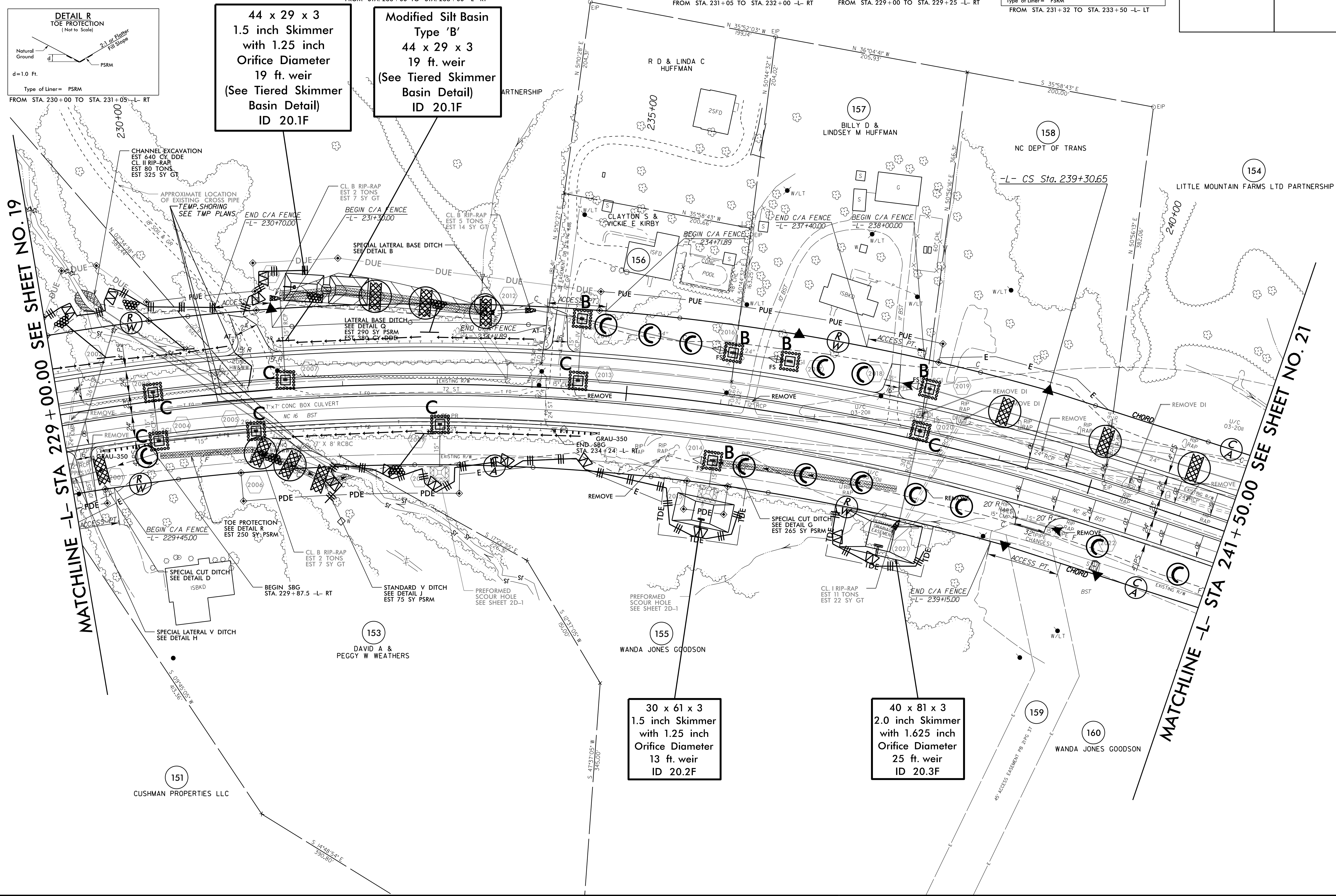
Modified Silt Basin
Type 'B'
44 x 29 x 3
19 ft. weir
(See Tiered Skimmer
Basin Detail)
ID 20.1F

30 x 61 x 3
1.5 inch Skimmer
with 1.25 inch
Orifice Diameter
13 ft. weir
ID 20.2F

40 x 81 x 3
2.0 inch Skimmer
with 1.625 inch
Orifice Diameter
25 ft. weir
ID 20.3F

MATCHLINE -L- STA 229+00.00 SEE SHEET NO. 19

MATCHLINE -L- STA 241+50.00 SEE SHEET NO. 21



MAD 8/28/RS 2017

8/17/19

I:\OCT-2016\12-09\mms\101\Des\101\B3100A_EC_psh20.dgn
R:\101\Des\101\B3100A_EC_psh20.dgn
R:\101\Des\101\B3100A_EC_psh20.dgn