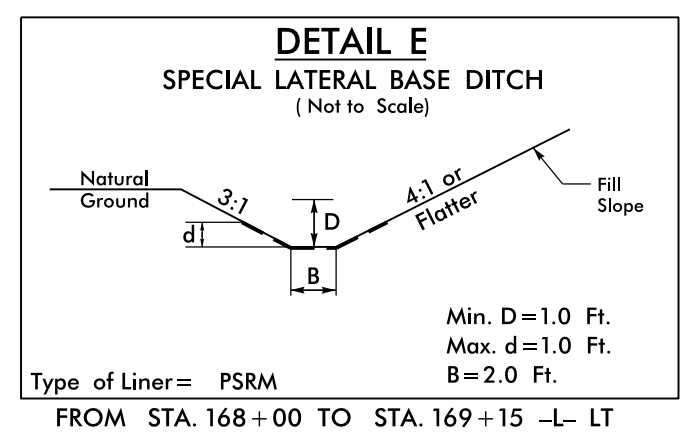
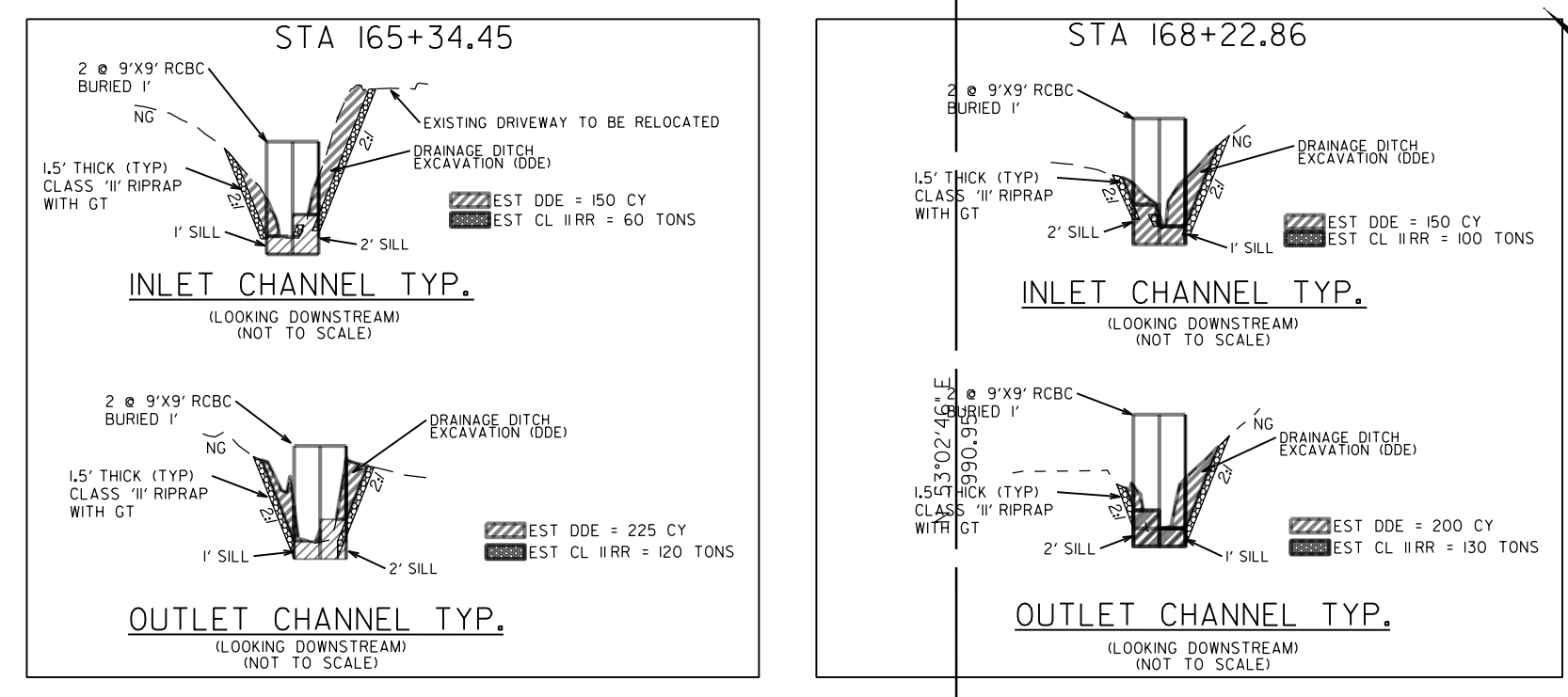


8/17/99

1007 SRS 2007  
MAD 8/3/RS 2007



**30 x 30 x 3**  
**1.5 inch Skimmer**  
**with 1.25 inch**  
**Orifice Diameter**  
**14 ft. weir**  
**(See Tiered Skimmer**  
**Basin Detail)**  
**ID 15.3**

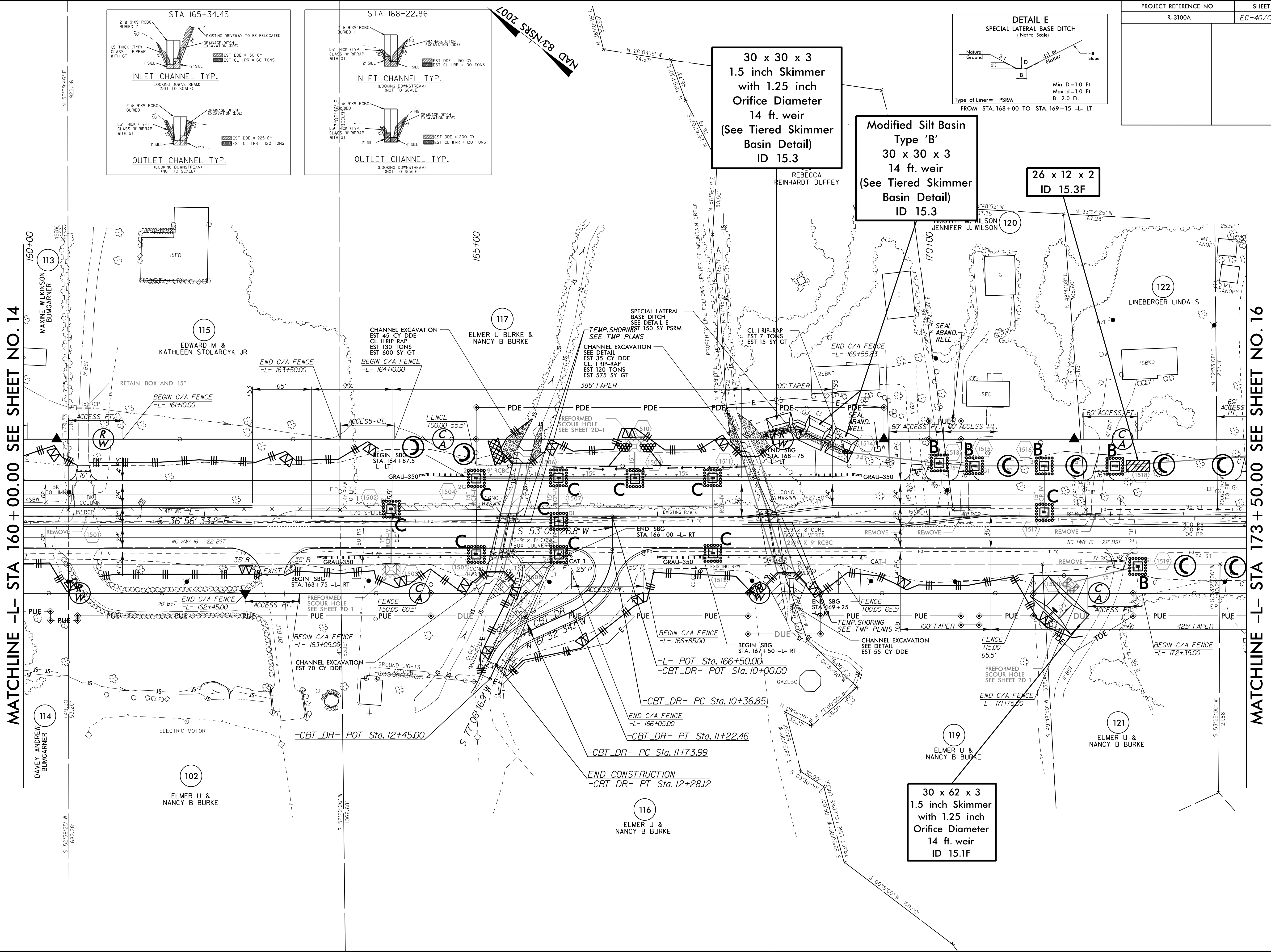
**Modified Silt Basin**  
**Type 'B'**  
**30 x 30 x 3**  
**14 ft. weir**  
**(See Tiered Skimmer**  
**Basin Detail)**  
**ID 15.3**

**26 x 12 x 2**  
**ID 15.3F**

**30 x 62 x 3**  
**1.5 inch Skimmer**  
**with 1.25 inch**  
**Orifice Diameter**  
**14 ft. weir**  
**ID 15.1F**

MATCHLINE -L- STA 160+00.00 SEE SHEET NO. 14

MATCHLINE -L- STA 173+50.00 SEE SHEET NO. 16



11.02.1-2016 11:47  
H:\V\1-2016 11:47  
mms\11.02.1-2016 11:47  
11.02.1-2016 11:47  
11.02.1-2016 11:47