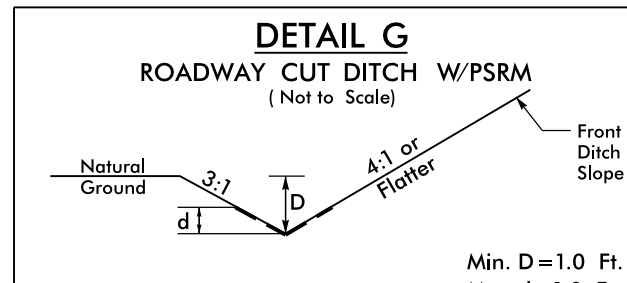
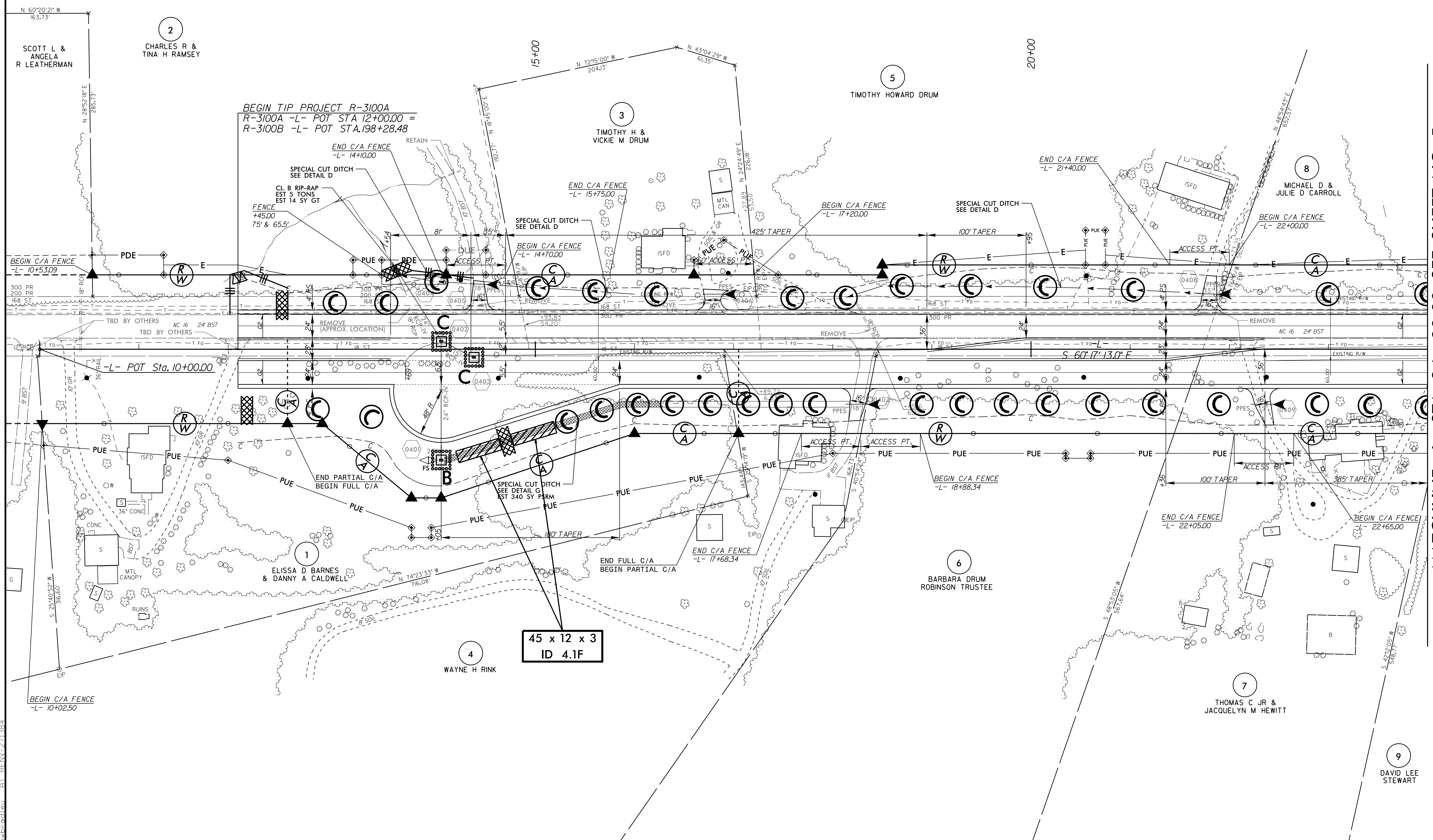


FROM STA. 13+61 LT TO STA. 16+00 LT -L-  
FROM STA. 18+13 LT TO STA. 21+87 LT -L-



FROM STA. 14+05 RT TO STA. 18+17 RT  
Type of Liner = PSRM

100' SENS 200' N



MATCHLINE -L- STA 24+00.00 SEE SHEET NO. 5

8/17/99  
L:\CT\2016\10\4\1\Des\19\B3100A\_EC.psh04.dgn  
10/1/2016 10:41:11 AM  
C:\Users\jenn\OneDrive\Documents\B3100A\_EC.psh04.dgn