

**44 x 29 x 3
1.5 inch Skimmer
with 1.25 inch
Orifice Diameter
19 ft. weir
(See Tiered Skimmer
Basin Detail)
ID 20.1F**

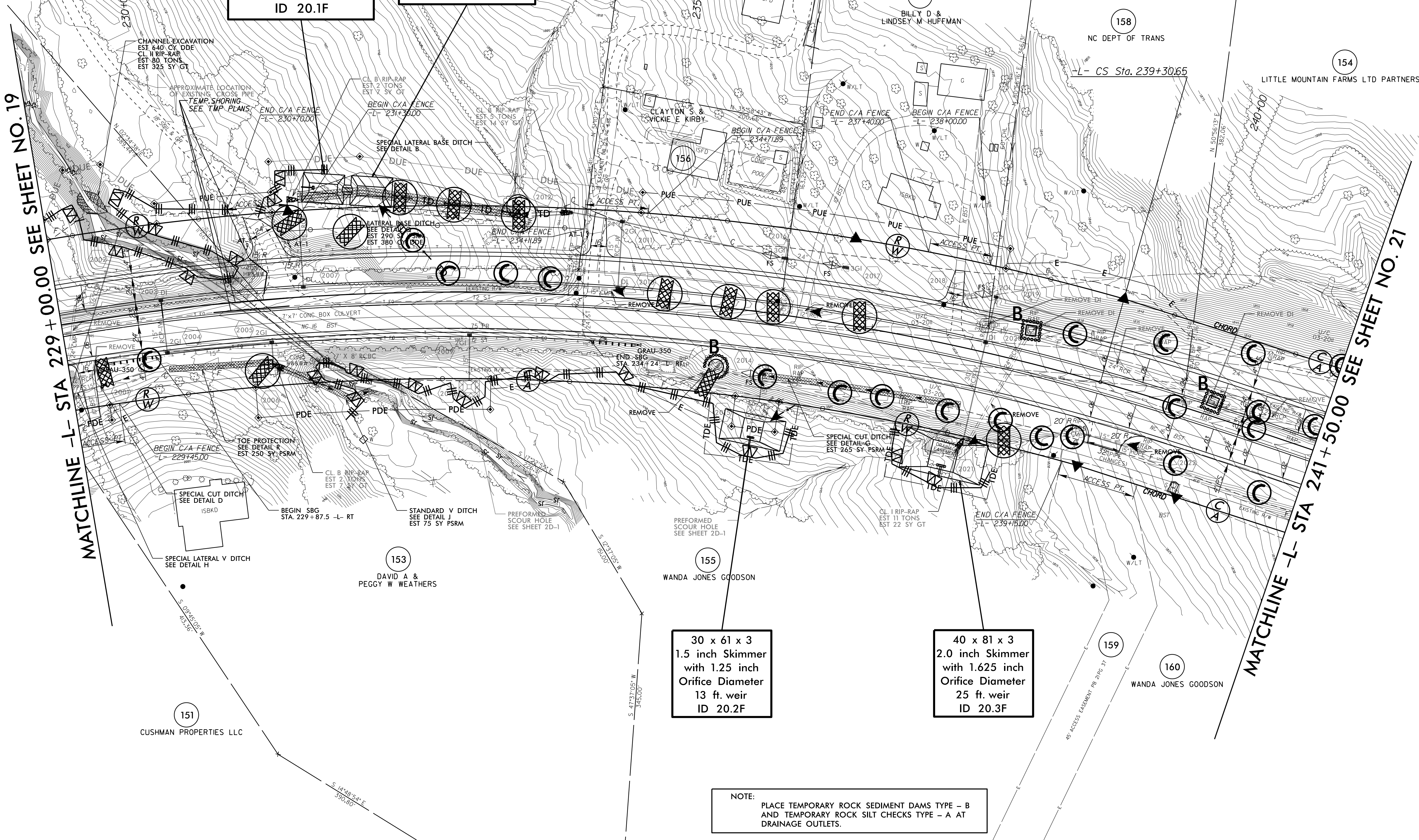
**Modified Silt Basin
Type 'B'
44 x 29 x 3
19 ft. weir
(See Tiered Skimmer
Basin Detail)
ID 20.1F**

**30 x 61 x 3
1.5 inch Skimmer
with 1.25 inch
Orifice Diameter
13 ft. weir
ID 20.2F**

**40 x 81 x 3
2.0 inch Skimmer
with 1.625 inch
Orifice Diameter
25 ft. weir
ID 20.3F**

NOTE:
PLACE TEMPORARY ROCK SEDIMENT DAMS TYPE - B
AND TEMPORARY ROCK SILT CHECKS TYPE - A AT
DRAINAGE OUTLETS.

**CLEARING AND GRUBBING
EROSION CONTROL FOR
CONSTRUCTION SHEET 20**



8/17/99

11 OCT 2016 12:08
I:\Projects\2016\12\08\mms\101\Des\101\B3100A_EC_psh20.dgn
User: jrenny