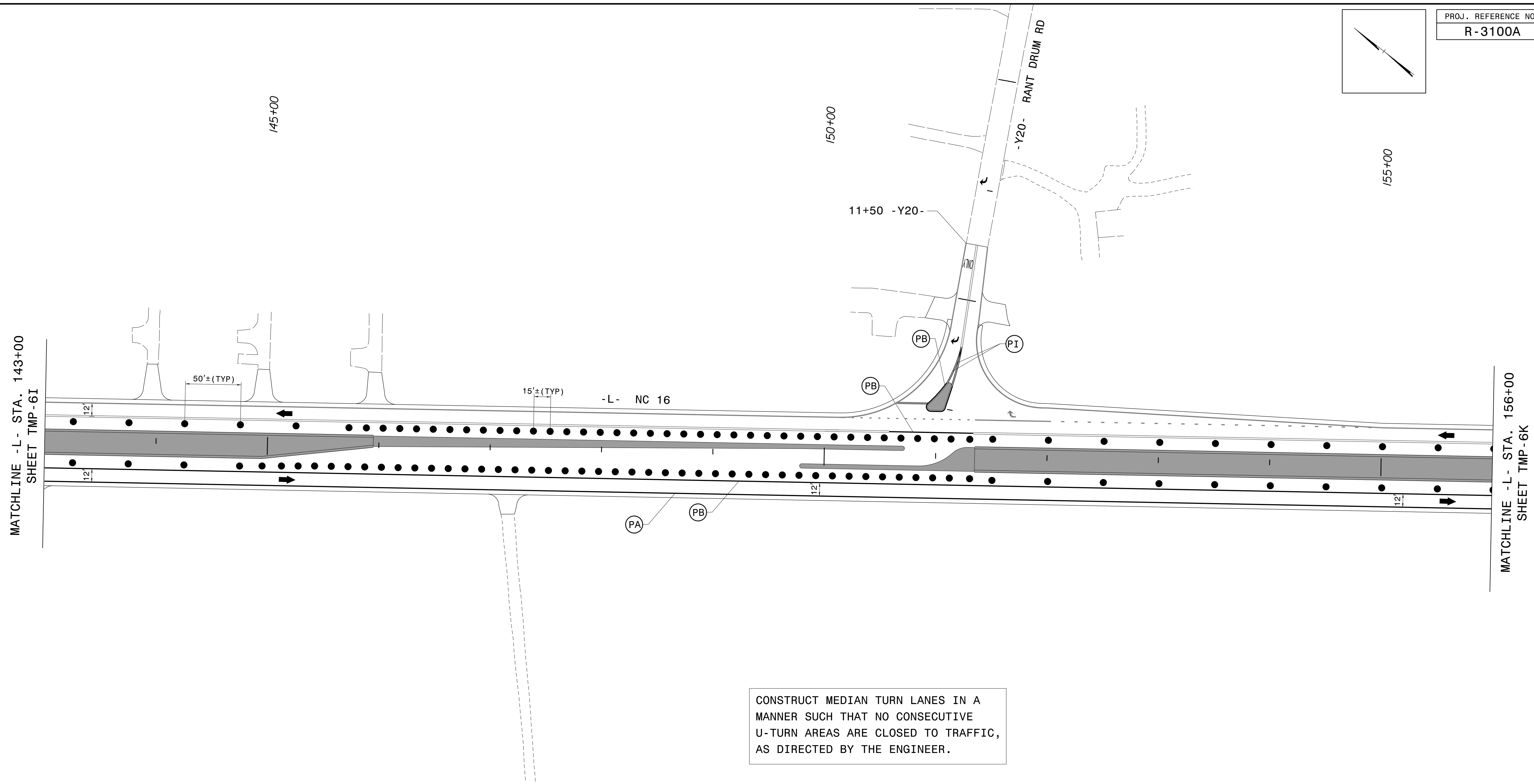
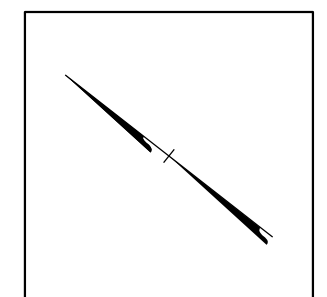


PROJ. REFERENCE NO.	SHEET NO.
R-3100A	TMP-6J



CONSTRUCT MEDIAN TURN LANES IN A MANNER SUCH THAT NO CONSECUTIVE U-TURN AREAS ARE CLOSED TO TRAFFIC, AS DIRECTED BY THE ENGINEER.

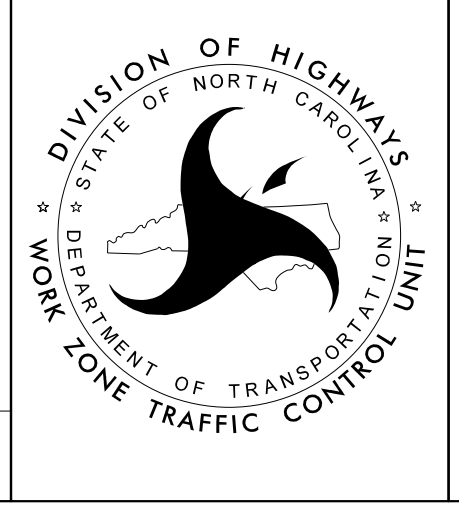
10/3/2016
 U:\TrafficControl\TCP\PLAN SHEETS\R-3100A_TC_TMP_06_LPHASE_III.dgn
 angood

Stantec Consulting Services Inc.
 801 Jones Franklin Road
 Suite 300
 Raleigh, NC 27606
 Tel. 919.851.6866
 Fax. 919.851.7024
 www.stantec.com
 License No. F-0672

DocuSigned by:
 Betsy L. Watson
 35E678858-9749F

10/3/2016

DOCUMENT NOT CONSIDERED FINAL
 UNLESS ALL SIGNATURES COMPLETED



PHASE III