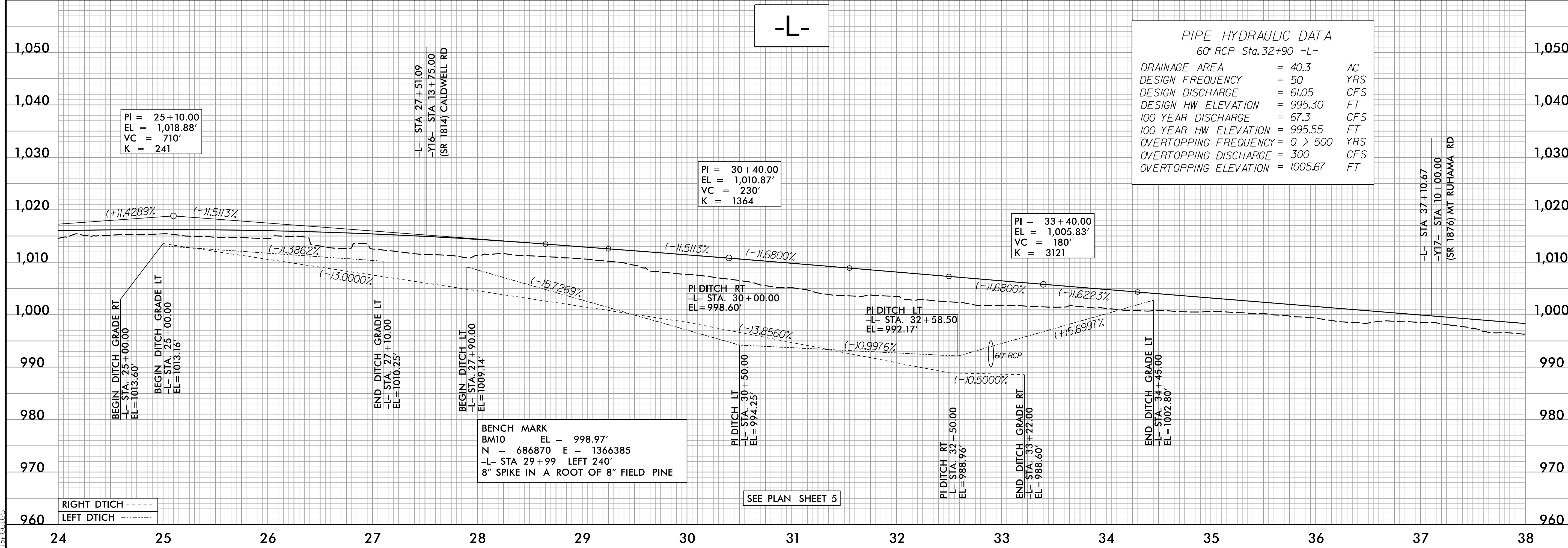
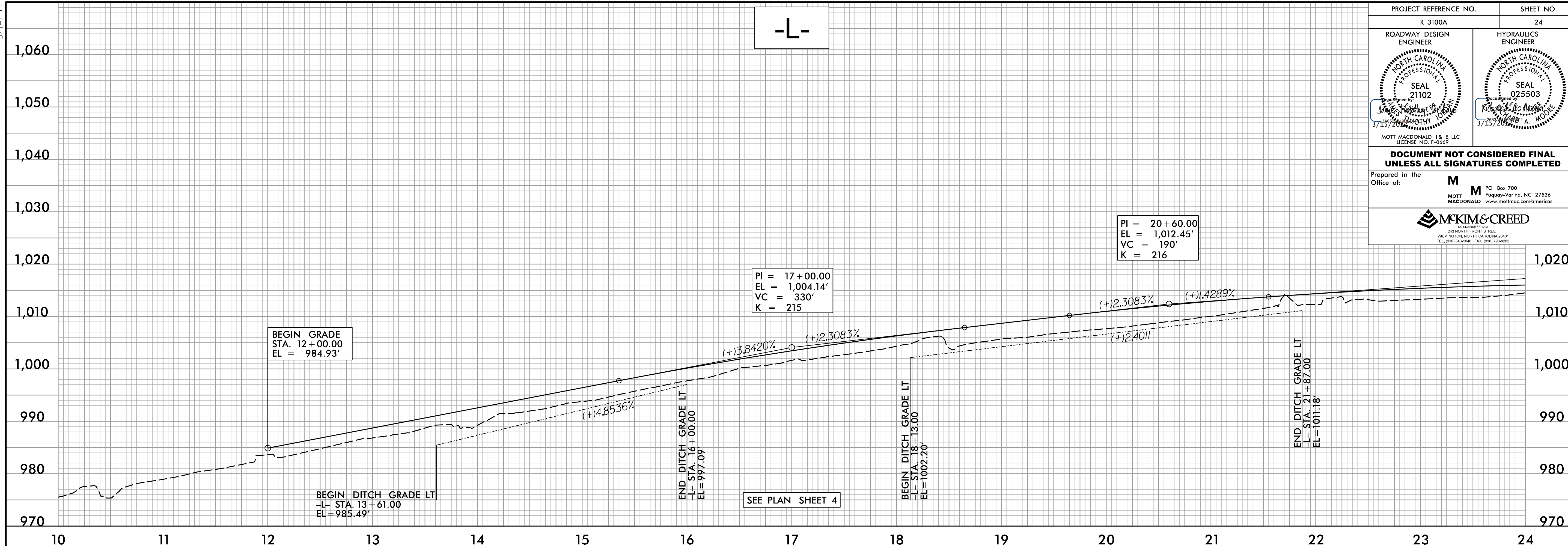


5/14/99

PROJECT REFERENCE NO. R-3100A	SHEET NO. 24
ROADWAY DESIGN ENGINEER NORTH CAROLINA PROFESSIONAL SEAL 21102 JAMES W. WILSON 3/15/2004	HYDRAULICS ENGINEER NORTH CAROLINA PROFESSIONAL SEAL Q25503 KIMBERLY A. MOORE 3/15/2004
DOCUMENT NOT CONSIDERED FINAL UNLESS ALL SIGNATURES COMPLETED	
Prepared in the Office of: <b>M</b> MOTT MACDONALD 1 & E, LLC Fayetteville, NC 27526 www.mottmac.com/americas	
<b>MCKIM &amp; CREED</b> REGISTERED PROFESSIONAL ENGINEERS 343 NORTH FRONT STREET WILMINGTON, NORTH CAROLINA 28401 TEL: (910) 343-5448 FAX: (910) 798-8822	



**PIPE HYDRAULIC DATA**  
60" RCP Sta. 32+90 -L-

DRAINAGE AREA	= 40.3	AC
DESIGN FREQUENCY	= 50	YRS
DESIGN DISCHARGE	= 61.05	CFS
DESIGN HW ELEVATION	= 995.30	FT
100 YEAR DISCHARGE	= 67.3	CFS
100 YEAR HW ELEVATION	= 995.55	FT
OVERTOPPING FREQUENCY	= 0 > 500	YRS
OVERTOPPING DISCHARGE	= 300	CFS
OVERTOPPING ELEVATION	= 1005.67	FT

RIGHT DTICH - - - - -  
LEFT DTICH - - - - -

5/19/04 PM  
 P:\Projects\3100A\Drawings\Profile\3100A\_rdu\_psh24-36.dgn  
 10:56:16