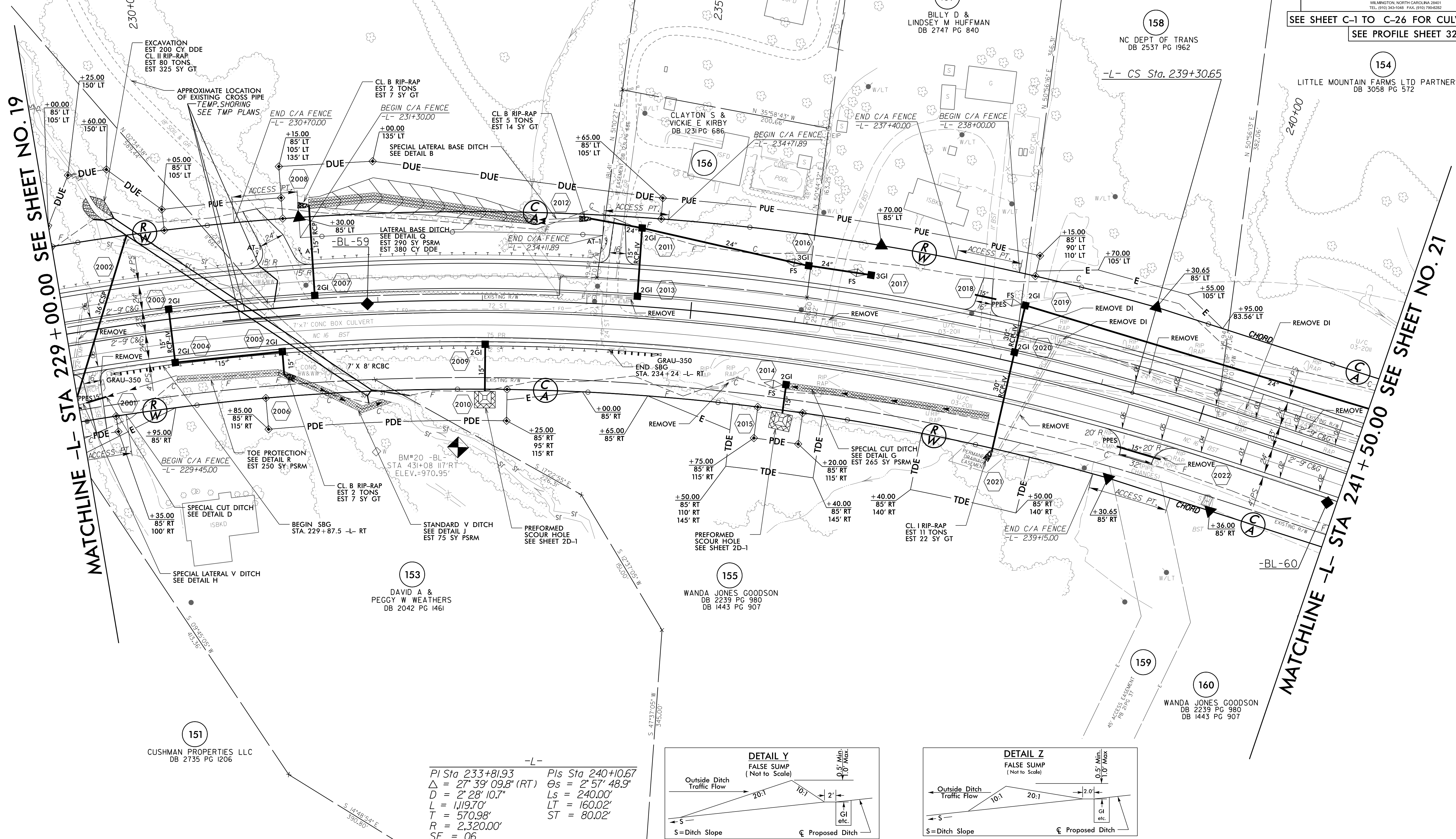
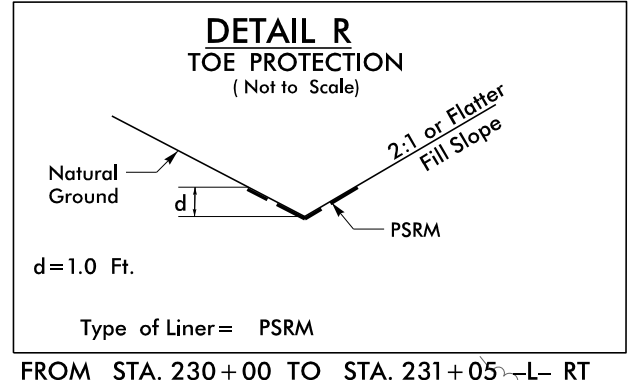
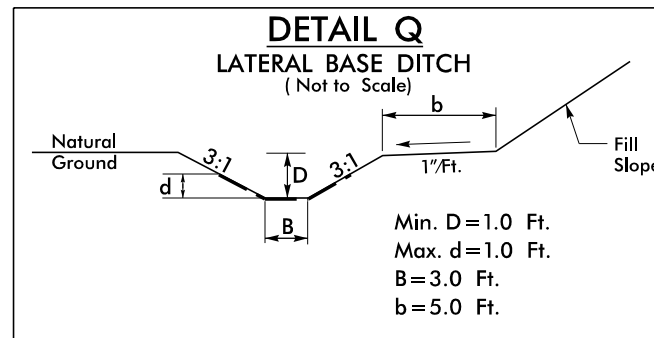
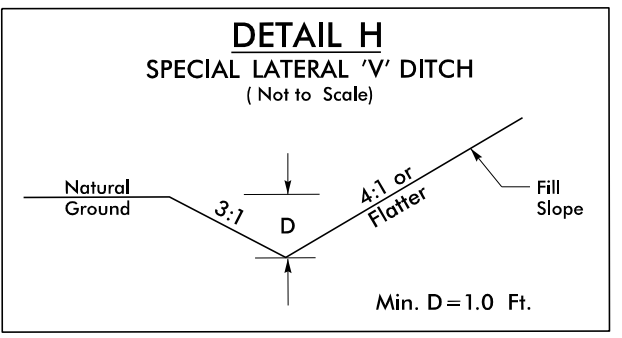
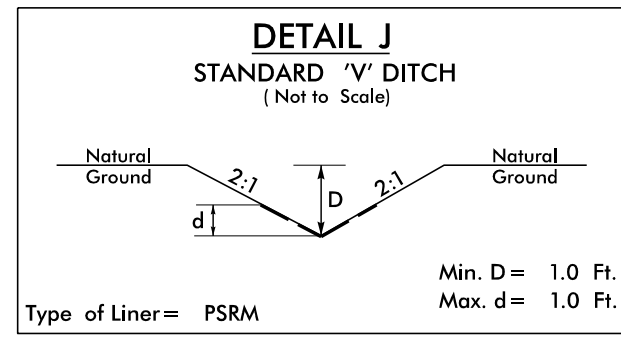
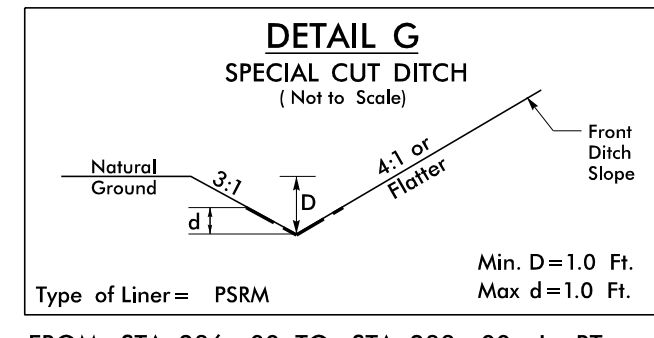
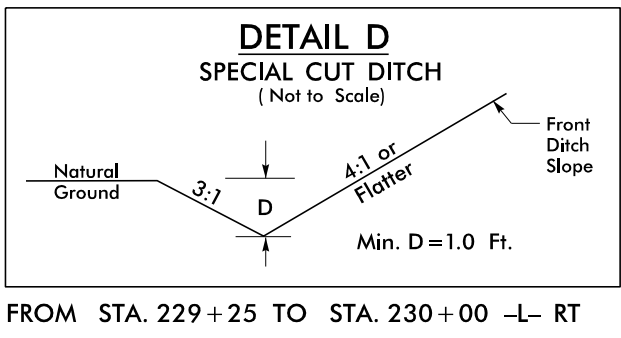
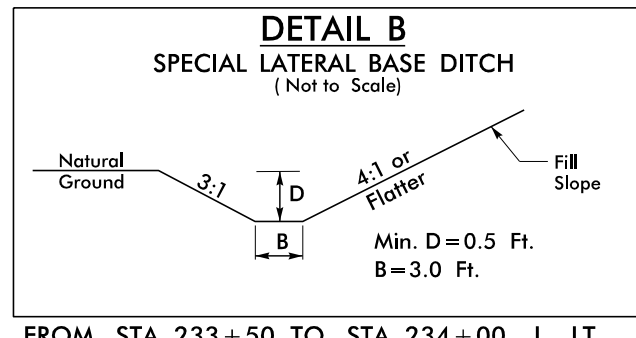


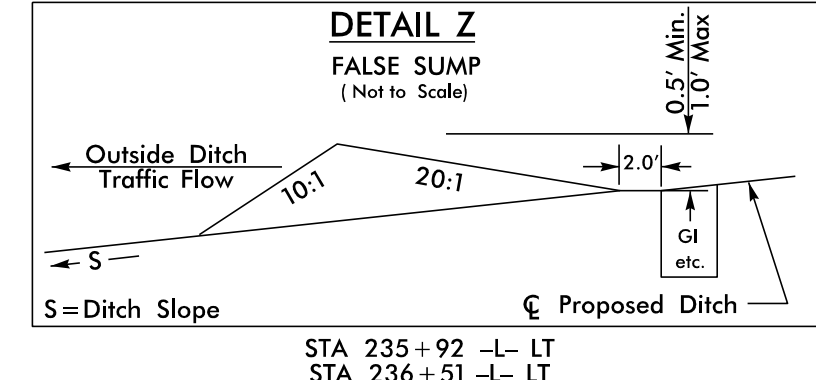
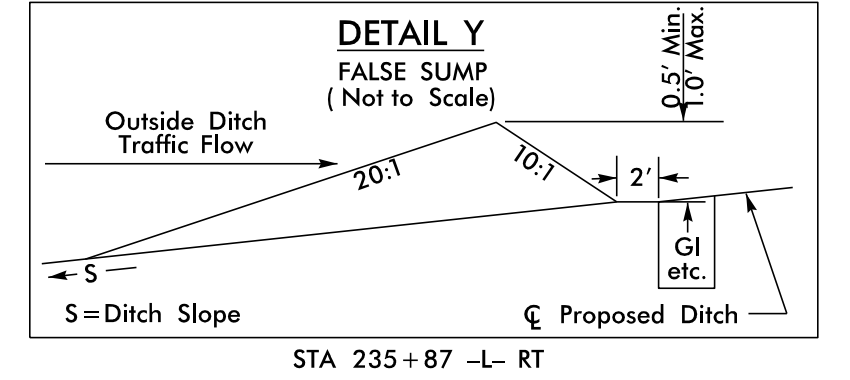
8.17.799



MATCHLINE -L- STA 229 + 00.00 SEE SHEET NO. 19

MATCHLINE -L- STA 241 + 50.00 SEE SHEET NO. 21

Pi Sta 233+81.93 Pis Sta 240+10.67
 $\Delta = 27' 39" 09.8" (RT)$ $\Theta_s = 2' 57" 48.9"$
 $D = 2' 28" 10.7"$ $L_s = 240.00'$
 $L = 1,119.70'$ $LT = 160.02'$
 $T = 570.98'$ $ST = 80.02'$
 $R = 2,320.00'$
 $SE = 06$
 $RO = 240'$



ALL DRIVEWAY RADII ARE 10' UNLESS OTHERWISE NOTED ON PLANS.

PROJECT REFERENCE NO. R-3100A	SHEET NO. 20
ROADWAY DESIGN ENGINEER MOTT MACDONALD 1 & E, LLC LICENSE NO. F-06697	HYDRAULICS ENGINEER MOTT MACDONALD 1 & E, LLC LICENSE NO. F-06697
<p>DOCUMENT NOT CONSIDERED FINAL UNLESS ALL SIGNATURES COMPLETED</p>	
<p>Prepared in the Office of:</p> <p>M MOTT MACDONALD PO Box 700 Fuquay-Varina, NC 27526 www.mottmac.com/americas</p>	

SEE SHEET C-1 TO C-26 FOR CULVERT PLANS
SEE PROFILE SHEET 32

8.17.799