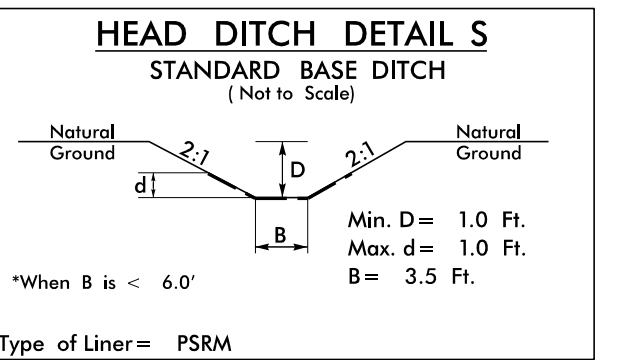
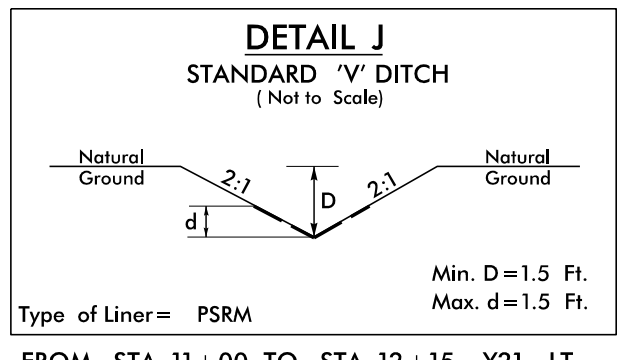
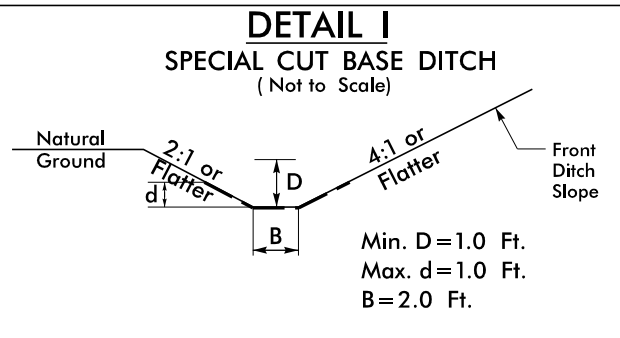
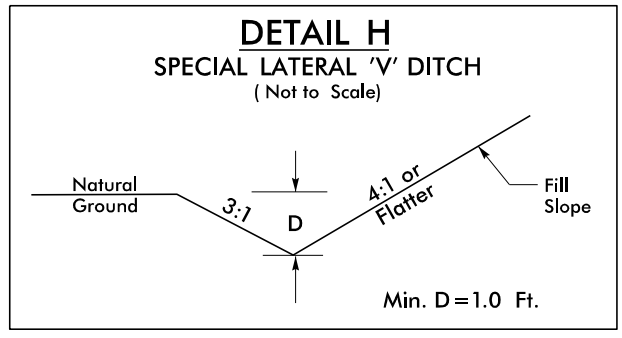
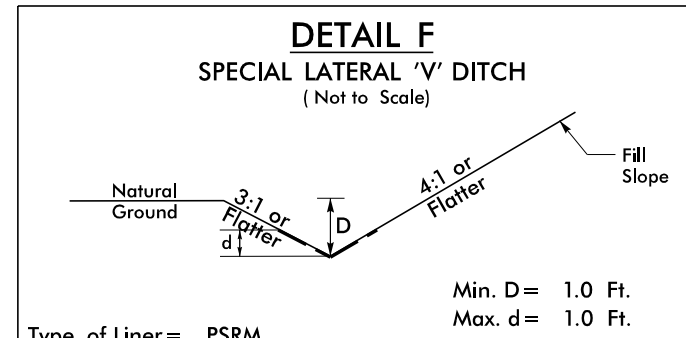
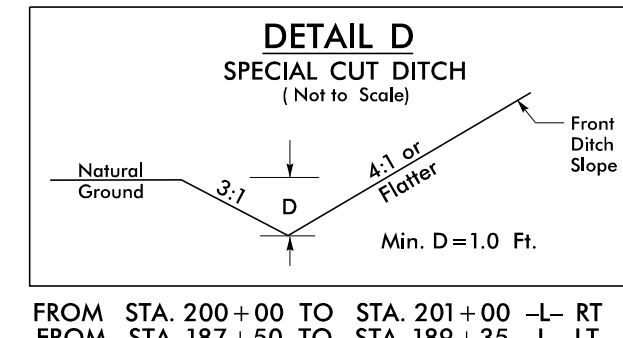
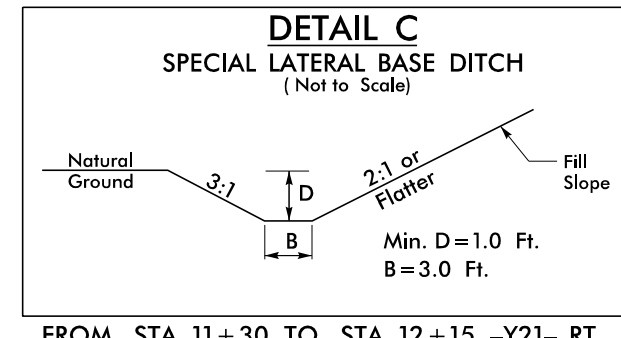
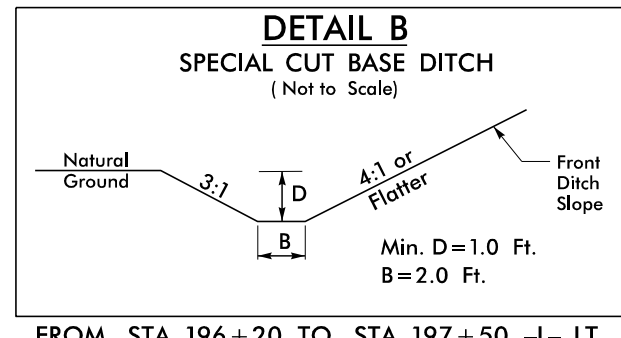


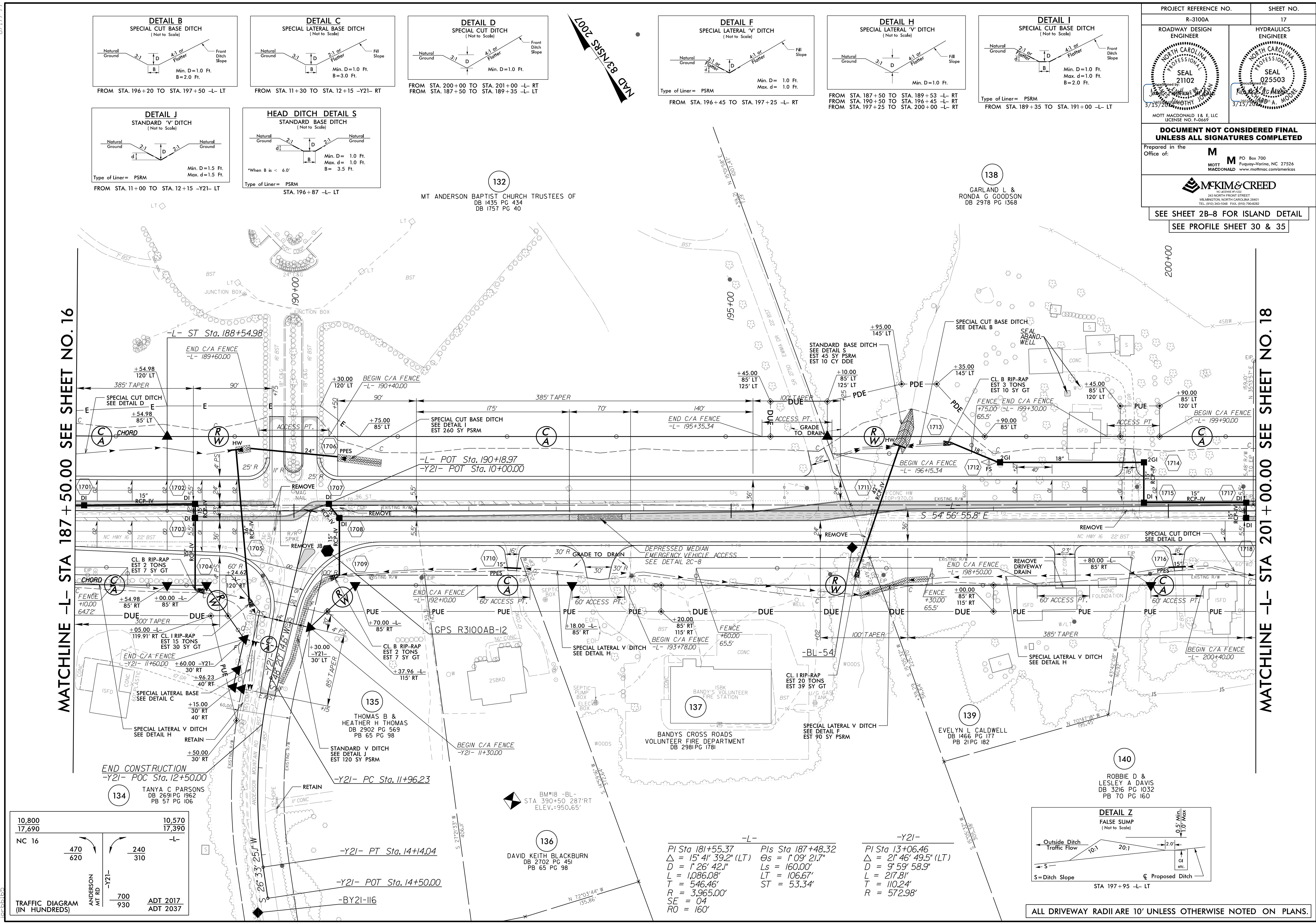
8/17/99



PROJECT REFERENCE NO. R-3100A	SHEET NO. 17
ROADWAY DESIGN ENGINEER	HYDRAULICS ENGINEER
DOCUMENT NOT CONSIDERED FINAL UNLESS ALL SIGNATURES COMPLETED	
Prepared in the Office of:	
SEE SHEET 2B-8 FOR ISLAND DETAIL SEE PROFILE SHEET 30 & 35	

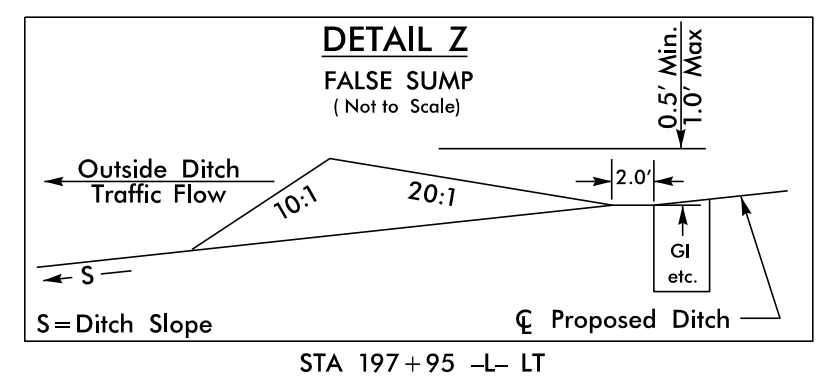
MATCHLINE -L- STA 187 + 50.00 SEE SHEET NO.16

MATCHLINE -L- STA 201 + 00.00 SEE SHEET NO.18



10,800	10,570
17,690	17,390
NC 16	-L-
470 620	240 310
ANDERSON MT RD	-Y21-
700	930
ADT 2017	ADT 2037

-L-	-Y21-
PI Sta 181+55.37	PIs Sta 187+48.32
$\Delta = 15' 41'' 39.2''$ (LT)	$\Delta s = 1' 09'' 21.7''$
$D = 1' 26'' 42.1''$	$Ls = 160.00'$
$T = 1,086.08'$	$LT = 106.67'$
$R = 546.46'$	$ST = 53.34'$
$R = 3,965.00'$	
$SE = 04$	
$RO = 160'$	



ALL DRIVEWAY RADII ARE 10' UNLESS OTHERWISE NOTED ON PLANS.

8/17/99 AM
R:\Projects\N\3100A\N\3100A_rdy_psh17.dgn
MOTT MACDONALD