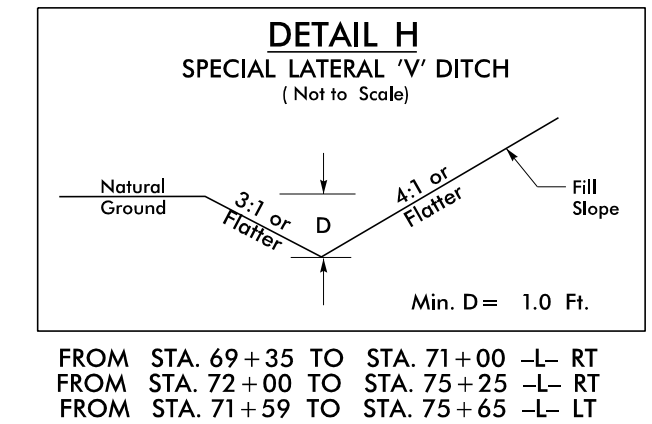
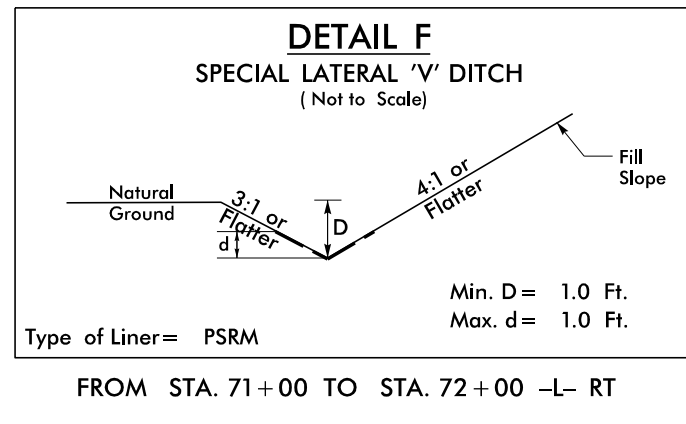
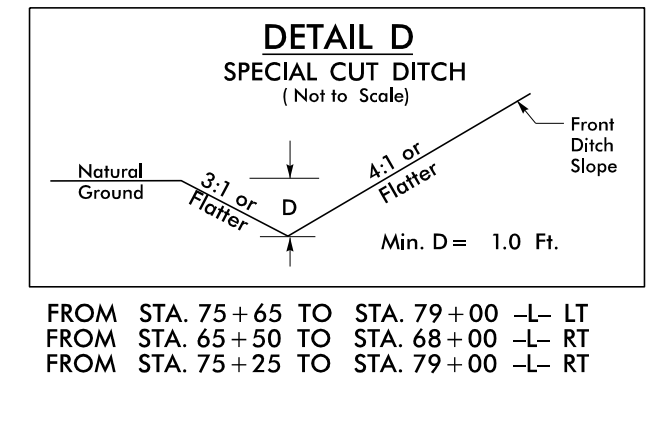
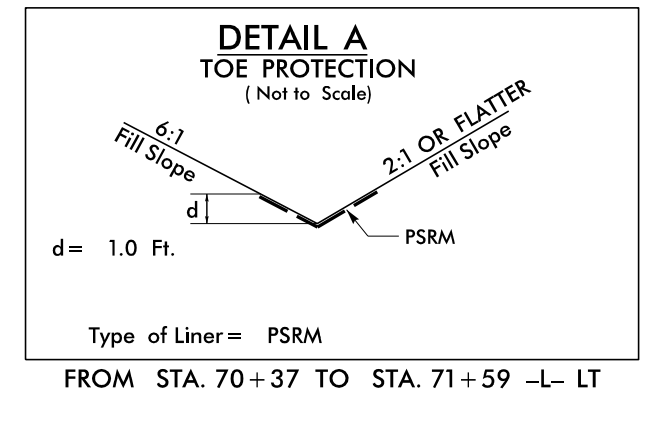


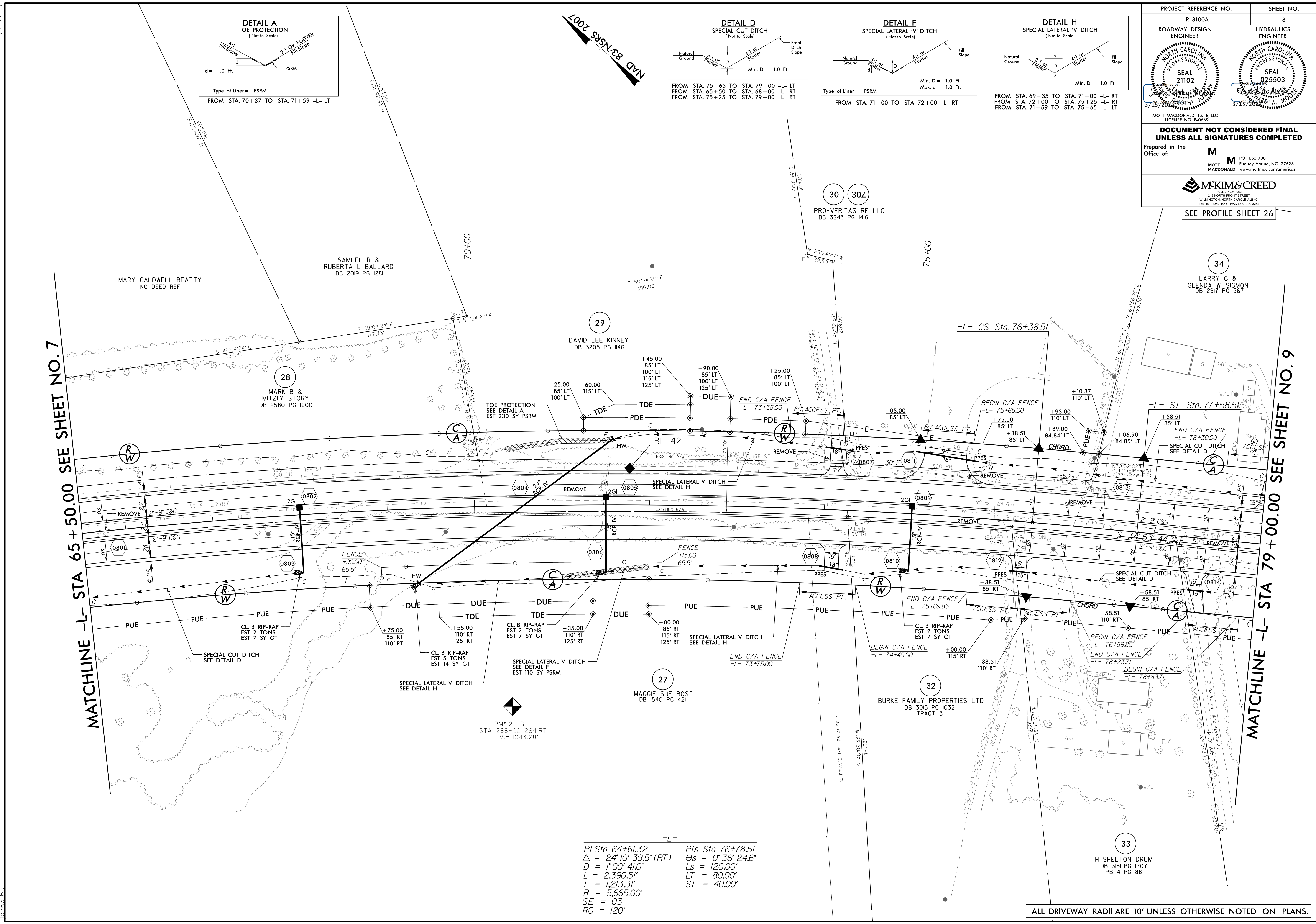
8/17/99

PROJECT REFERENCE NO. R-3100A		SHEET NO. 8	
ROADWAY DESIGN ENGINEER		HYDRAULICS ENGINEER	
<p>DOCUMENT NOT CONSIDERED FINAL UNLESS ALL SIGNATURES COMPLETED</p>			
<p>Prepared in the Office of: M MOTT MACDONALD & E, LLC Fuquay-Varina, NC 27526 PO Box 700 www.mottmac.com/americas</p>			
<p>SEE PROFILE SHEET 26</p>			



MATCHLINE -L- STA 65+50.00 SEE SHEET NO.7

MATCHLINE -L- STA 79+00.00 SEE SHEET NO.9



-L-
 PI Sta 64+61.32 Pls Sta 76+78.51
 $\Delta = 24'10'' 39.5''$ (RT) $\Theta s = 0' 36' 24.6''$
 $D = 1' 00' 4.0''$ $Ls = 120.00'$
 $L = 2,390.51'$ $LT = 80.00'$
 $T = 1,213.31'$ $ST = 40.00'$
 $R = 5,665.00'$
 $SE = 03$
 $RO = 120'$

ALL DRIVEWAY RADII ARE 10' UNLESS OTHERWISE NOTED ON PLANS.

F:\0558 AM\Projects\13357D5A-C745-45EA-ABA7-357205CEA745\13357D5A-C745-45EA-ABA7-357205CEA745.dgn