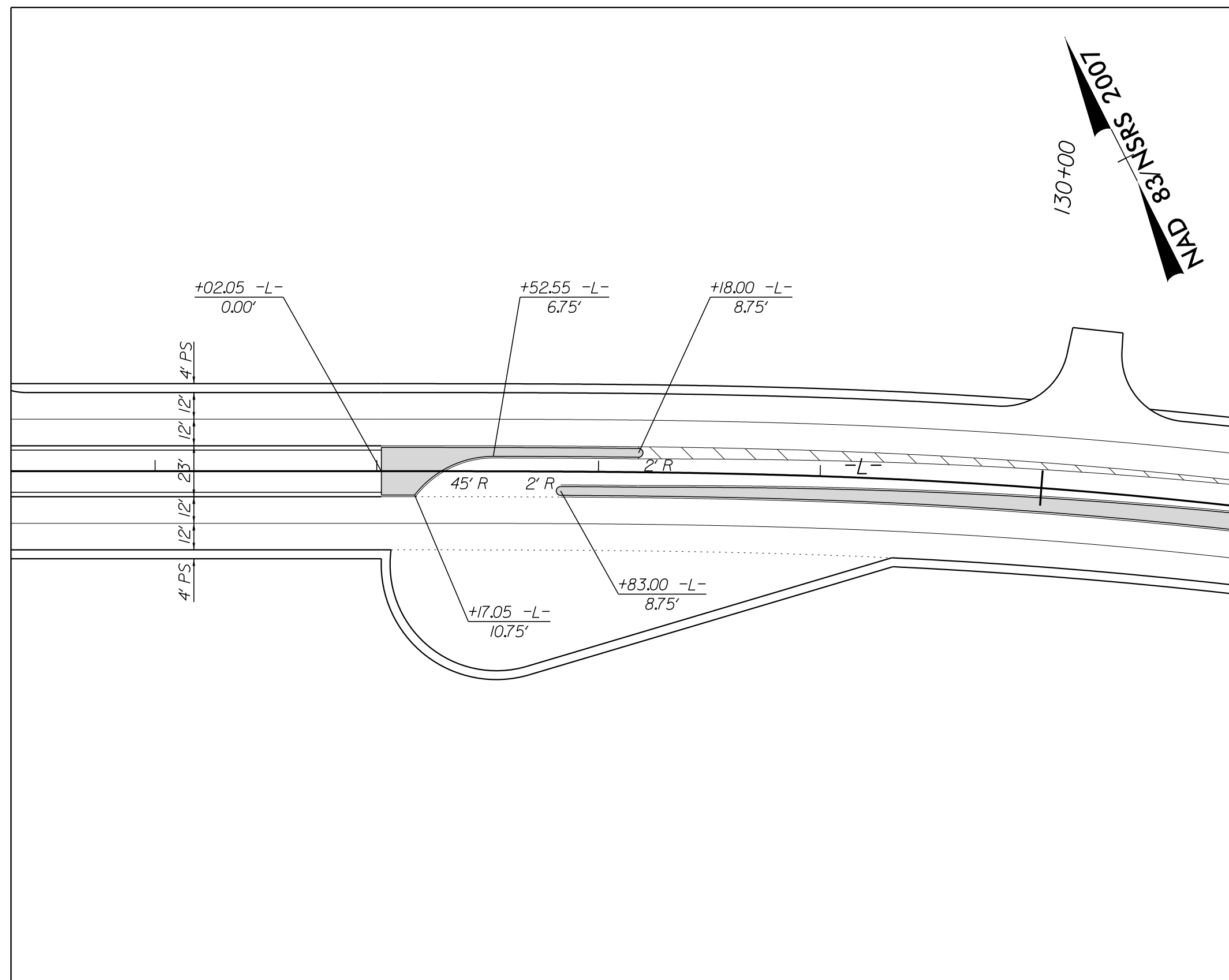
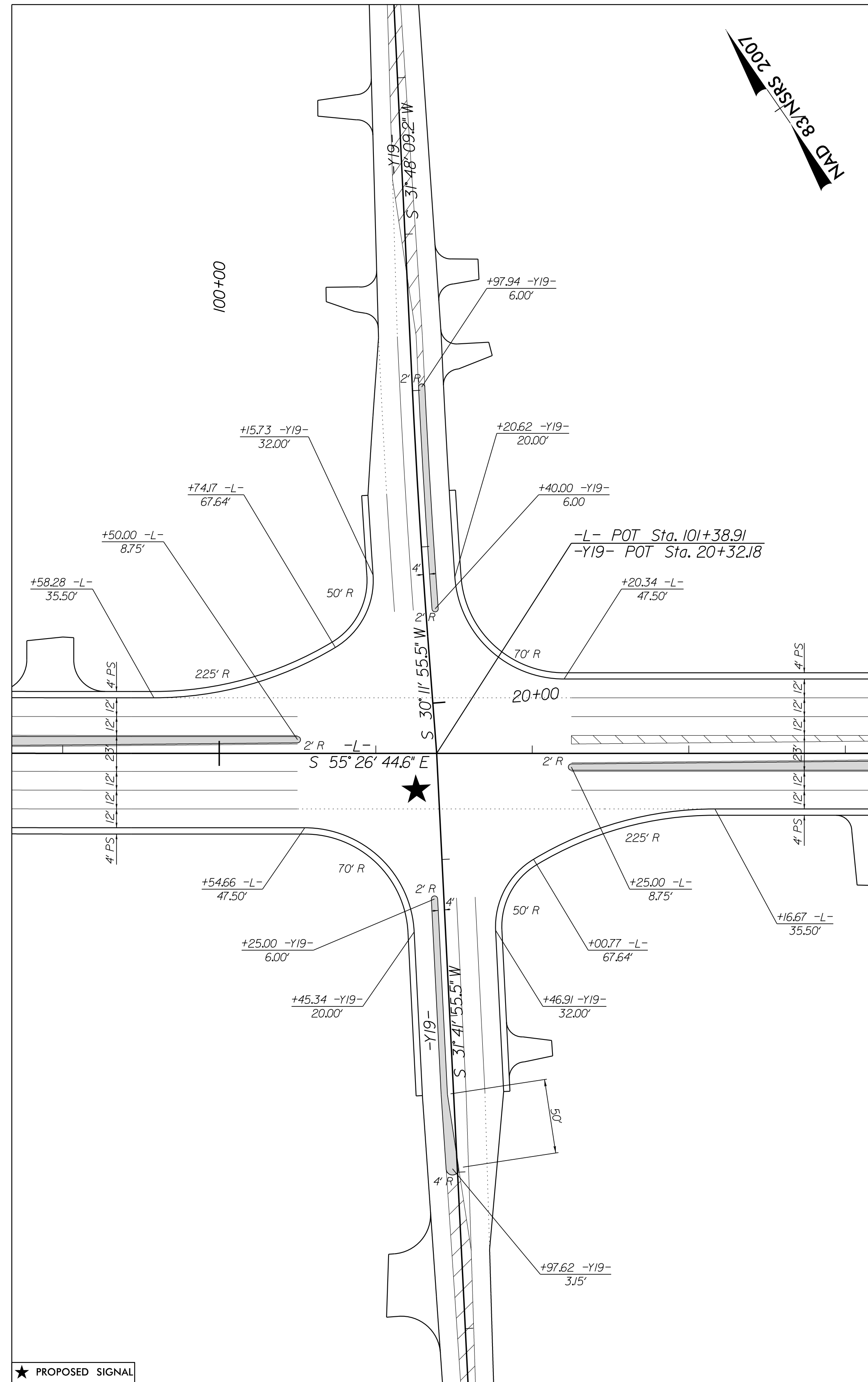


NC 16 (-L-)/
SR 2874 TIMBERBROOKE LN. (-Y18-) CONCRETE MONOLITHIC ISLAND DETAIL
SEE PLAN SHEET 7 FOR PLAN VIEW



NC 16 (-L-)
CONCRETE MONOLITHIC ISLAND DETAIL
SEE PLAN SHEET 12 FOR PLAN VIEW



NC 16 (-L-)/
SR 1003 BUFFALO SHOALS RD. (-Y19-) CONCRETE MONOLITHIC ISLAND DETAIL
SEE PLAN SHEET 10 FOR PLAN VIEW

PROJECT REFERENCE NO. R-3100A	SHEET NO. 2B-6
ROADWAY DESIGN ENGINEER MOTT MACDONALD 1 & E, LLC LICENSE NO. F-0669	
<p>DOCUMENT NOT CONSIDERED FINAL UNLESS ALL SIGNATURES COMPLETED</p> <p>Prepared in the Office of: M MOTT MACDONALD 1 & E, LLC Fayetteville, NC 27526 www.mottmcc.com/americas</p>	

