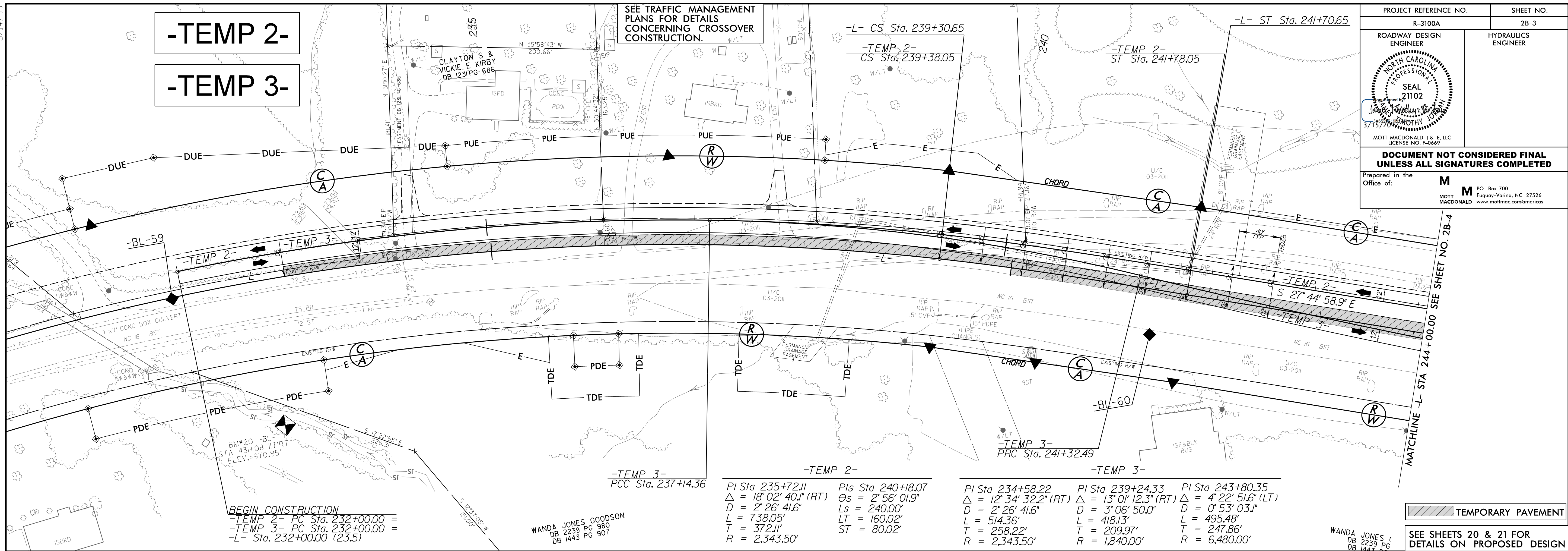


5/14/19

-TEMP 2-
-TEMP 3-

SEE TRAFFIC MANAGEMENT
PLANS FOR DETAILS
CONCERNING CROSSOVER
CONSTRUCTION.

PROJECT REFERENCE NO. R-3100A	SHEET NO. 2B-3
ROADWAY DESIGN ENGINEER	HYDRAULICS ENGINEER
<p>DOCUMENT NOT CONSIDERED FINAL UNLESS ALL SIGNATURES COMPLETED</p> <p>Prepared in the Office of: M</p> <p>M MOTT MACDONALD 1 & E, LLC PO Box 700 Fuquay-Varina, NC 27526 www.mottmac.com/americas</p>	



BEGIN CONSTRUCTION
 -TEMP 2- PC Sta. 232+00.00 =
 -TEMP 3- PC Sta. 232+00.00 =
 -L- Sta. 232+00.00 (23.5)

WANDA JONES GOODSON
 DB 2239 PG 980
 DB 1443 PG 901

-TEMP 2-		-TEMP 3-		-TEMP 3-	
PI Sta. 235+72.11	PIs Sta. 240+18.07	PI Sta. 234+58.22	PI Sta. 239+24.33	PI Sta. 243+80.35	
$\Delta = 18^{\circ}02'40.1''$ (RT)	$\Theta_s = 2^{\circ}56'01.9''$	$\Delta = 12^{\circ}34'32.2''$ (RT)	$\Delta = 13^{\circ}01'12.3''$ (RT)	$\Delta = 4^{\circ}22'51.6''$ (LT)	
$D = 2^{\circ}26'41.6''$	$L_s = 240.00'$	$D = 2^{\circ}26'41.6''$	$D = 3^{\circ}06'50.0''$	$D = 0^{\circ}53'03.1''$	
$L = 738.05'$	$LT = 160.02'$	$L = 514.36'$	$L = 418.13'$	$L = 495.48'$	
$T = 372.11'$	$ST = 80.02'$	$T = 258.22'$	$T = 209.97'$	$T = 247.86'$	
$R = 2,343.50'$		$R = 2,343.50'$	$R = 1,840.00'$	$R = 6,480.00'$	

TEMPORARY PAVEMENT

SEE SHEETS 20 & 21 FOR
DETAILS ON PROPOSED DESIGN