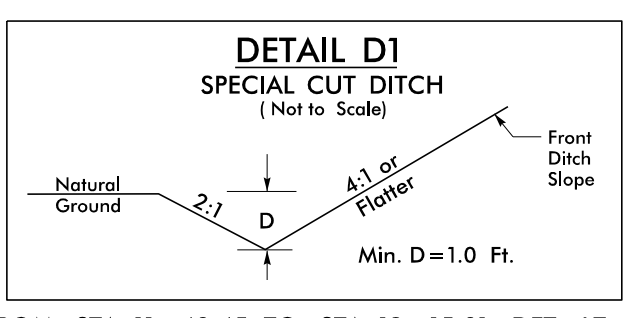


5/14/09



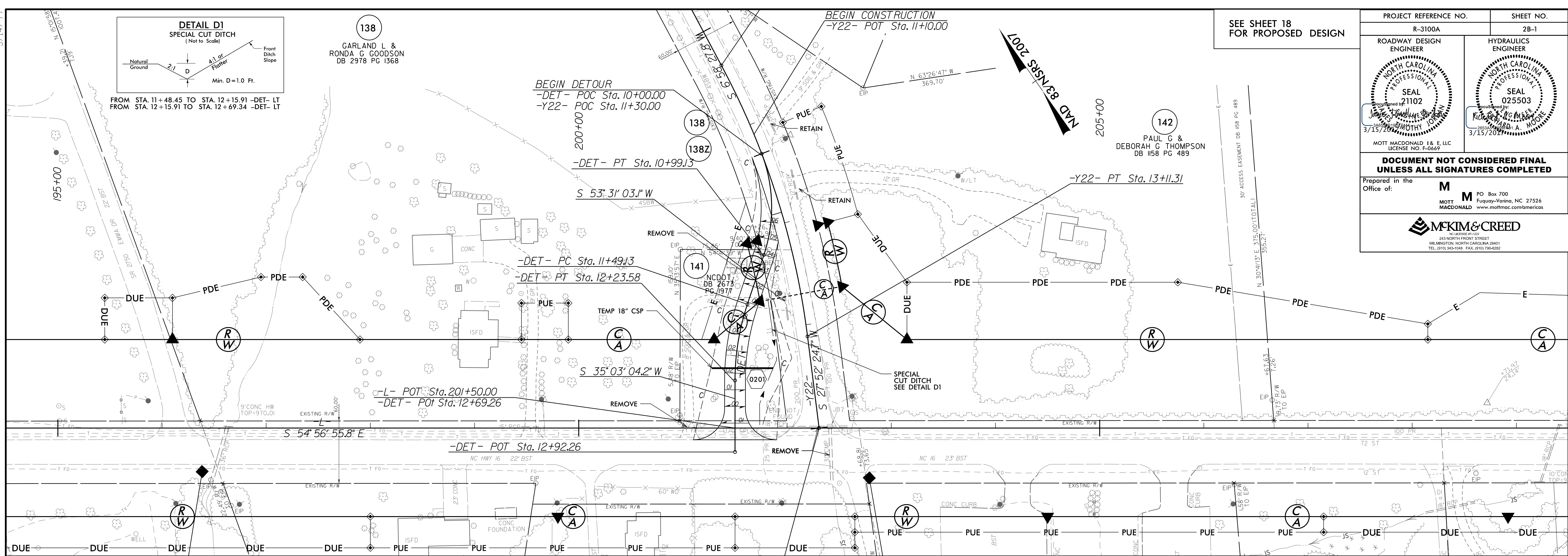
FROM STA. 11+48.45 TO STA. 12+15.91 -DET- LT
 FROM STA. 12+15.91 TO STA. 12+69.34 -DET- LT

138
 GARLAND L. &
 RONDA G. GOODSON
 DB 2978 PG 1368

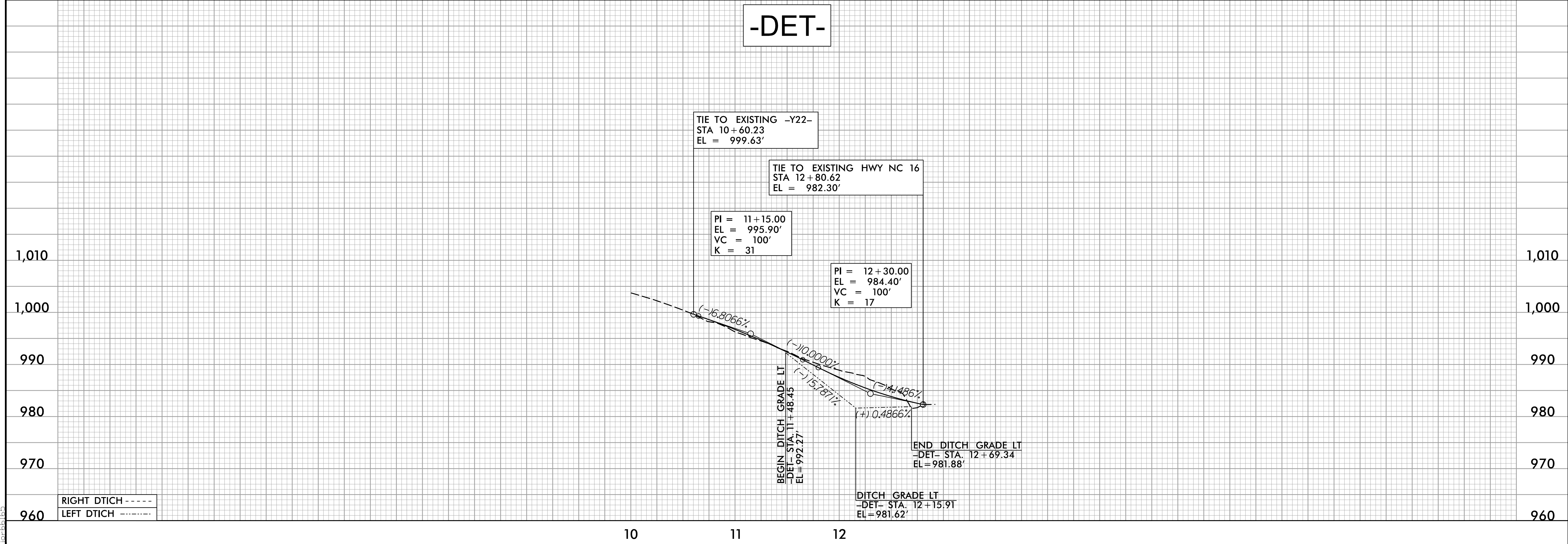
BEGIN CONSTRUCTION
 -Y22- POT Sta. 11+10.00

SEE SHEET 18
 FOR PROPOSED DESIGN

| | |
|---|--|
| PROJECT REFERENCE NO. R-3100A | SHEET NO. 2B-1 |
| ROADWAY DESIGN ENGINEER NORTH CAROLINA PROFESSIONAL SEAL 21102 JAMES W. WELLS 3/15/2009 | HYDRAULICS ENGINEER NORTH CAROLINA PROFESSIONAL SEAL 025503 KIMBERLY A. MOORE 3/15/2009 |
| DOCUMENT NOT CONSIDERED FINAL UNLESS ALL SIGNATURES COMPLETED | |
| Prepared in the Office of: MOTT MACDONALD 1 & E, LLC LICENSE NO. F-06697 | |
| MOTT MACDONALD 1 & E, LLC PO Box 700 Fayetteville, NC 27526 www.mottmac.com/americas | |
| MCKIM & CREED LICENSE NO. F-06697 243 NORTH FRONT STREET WILMINGTON, NORTH CAROLINA 28401 TEL: (910) 343-1048 FAX: (910) 796-0292 | |



-DET-



1:28:42 PM
 H:\Projects\2009\Projects\3100A\rdm\psh02B-1.dgn
 10/26/09