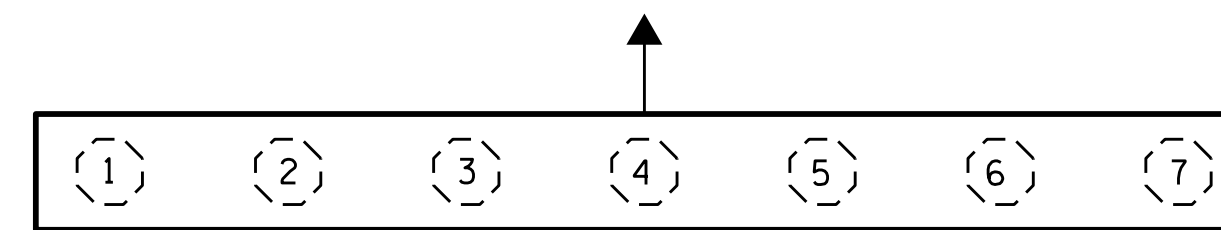
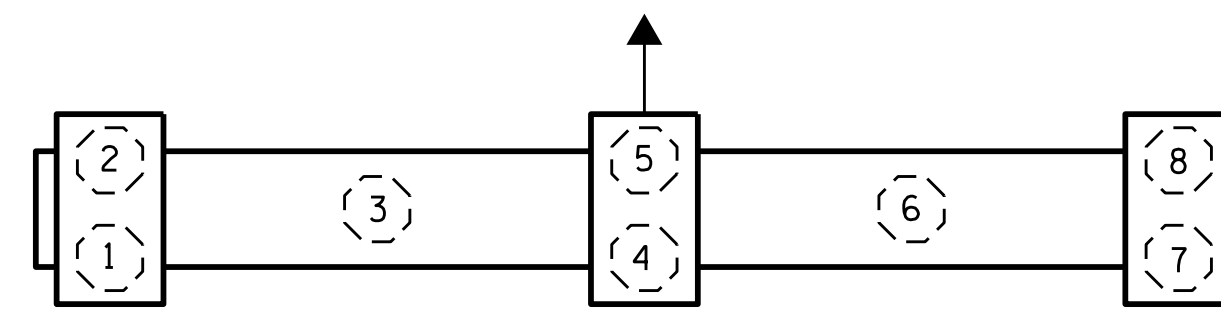


PILE REPAIRS				
BENT	PILE	TYPE	JACKET LENGTH	
			EST. LF	ACTUAL LF
34	2	*1	6	
34	4	1	6	
34	5	1	6	
34	6	*1	6	
34	8	1	6	
34	10	1	6	
34	11	1	6	
34	12	1	6	
34	13	1	6	
34	14	1	6	
34	15	*1	6	
34	16	1	6	
34	17	1	6	
34	18	1	6	
35	1	1	6	
35	2	1	6	
35	3	1	6	
35	4	1	6	
35	6	1	6	
35	7	1	6	
35	8	1	6	
35	9	1	6	
35	10	1	6	
35	11	1	6	
35	12	1	6	
35	13	1	6	
35	14	1	6	
35	15	1	6	
35	17	1	6	
35	18	1	6	
36	1	1	6	
36	2	1	6	
36	3	1	6	
36	5	1	6	
36	6	1	6	
36	8	1	6	
36	11	1	6	
36	14	1	6	
40	2	1	6	
41	5	1	6	
44	12	1	6	
44	13	1	6	
45	2	1	6	
45	5	1	6	
45	8	*1	6	

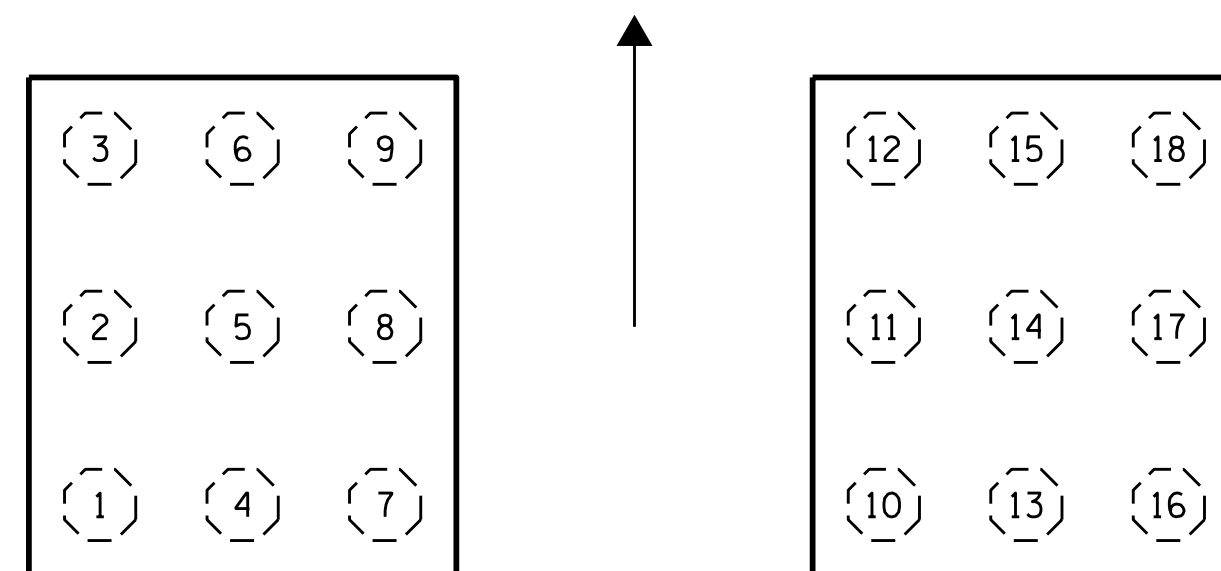
PILE REPAIRS				
BENT	PILE	TYPE	JACKET LENGTH	
			EST. LF	ACTUAL LF
45	12	*1	6	
46	3	1	6	
46	11	*1	6	
46	12	1	6	
46	14	*2	6	
46	15	1	6	
46	18	1	6	
47	2	1	7	
47	3	1	7	
47	5	1	7	
47	6	1	7	
47	7	1	7	
48	2	1	7	
49	1	1	7	
50	3	1	7	
51	1	1	7	
56	1	1	7	
56	3	1	7	
56	4	1	7	
56	6	1	7	



BTS 48,49,51,52,54,55,57,58



BTS 47,50,53,56



BTS 34,35,36,40,41,44,45,46

TYPICAL PILE NUMBERS
BENTS WITH MORE PILES FOLLOW SIMILAR PATTERN

SUMMARY OF QUANTITIES

	QUANTITIES	
	ESTIMATE	ACTUAL
BENTS 34 - 58	LF	LF
TYPE 1	397	
TYPE 2	6	
	ESTIMATE	ACTUAL
BENTS 34 - 58	EACH	EACH
BULK ANODE	65	

TYPE 1 REPAIR IS A CP JACKET (NON-MONITORING).
 TYPE 2 REPAIR IS A CP JACKET (MONITORING).
 EACH CP JACKET LOCATION SHALL RECEIVE A BULK ANODE.
 *CP JACKET SHALL BE STRUCTURAL, SEE SHT S2-66 THRU S-68.
 SEE SHT S2-66 THRU S-68 FOR CP JACKET DETAILS.
 FOR CP JACKETS, SEE "GALVANIC CATHODIC PROTECTION INTEGRAL PILE JACKET" SPECIAL PROVISION.



PROJECT NO. B-5939
CARTERET COUNTY
 BRIDGE NO. 6

SHEET 2 OF 2

STATE OF NORTH CAROLINA
 DEPARTMENT OF TRANSPORTATION
 RALEIGH

PILE JACKET
 REPAIR TABLES

DRAWN BY : M.LEE / R.WEISZ DATE : 12/2016
 CHECKED BY : R.WEISZ DATE : 2/2017

DOCUMENT NOT CONSIDERED
 FINAL UNLESS ALL
 SIGNATURES COMPLETED

REVISIONS						SHEET NO.
NO.	BY:	DATE:	NO.	BY:	DATE:	S2-70
1			3			TOTAL SHEETS
2			4			