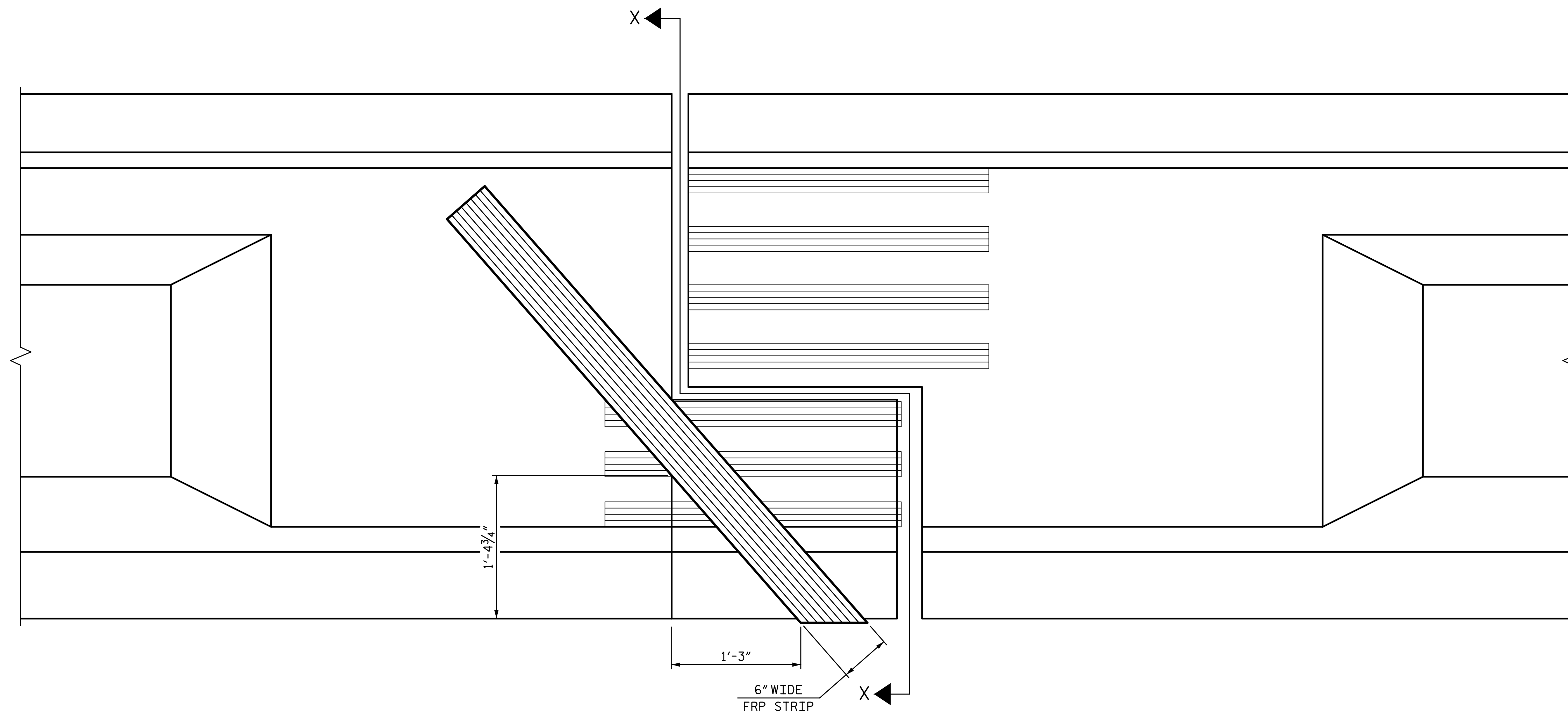


2/15/2017 2:04:22 PM G:\Projects\2015\Carteret 6 FRP Repair\Structures\Drawings\Final\Carteret 6\_smu\_repairs.dgn

**NOTES:**

FOR VIEWS, SEE SHEET 15 OF 15.  
LAYER 1 NOT SHOWN FOR CLARITY.



**ELEVATION**

(EXTERIOR GIRDER 7 NORTH HINGE SHOWN, EXTERIOR GIRDER 1 SOUTH HINGE SIMILAR AND EXTERIOR GIRDER 1 NORTH HINGE AND GIRDER 7 SOUTH HINGE SIMILAR BY ROTATION)

 PREVIOUS LAYER

 CURRENT LAYER

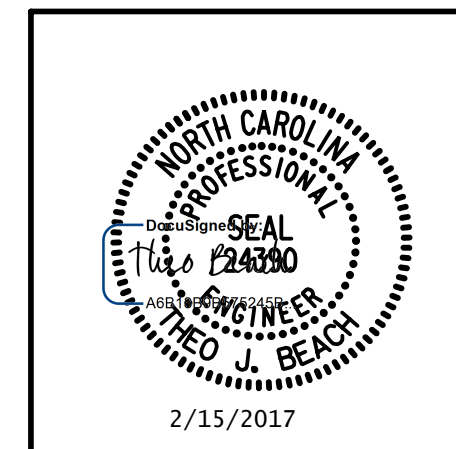
PROJECT NO. B-5939  
CARTERET COUNTY  
BRIDGE NO.: 6

SHEET 14 OF 15

STATE OF NORTH CAROLINA  
DEPARTMENT OF TRANSPORTATION  
RALEIGH  
PRESERVATION  
FRP STRIP LAYER 3  
FOR  
EXTERIOR GIRDERS  
FRP HINGE REPAIR

PLANS PREPARED BY:

**SE & A**  
SIMPSON  
ENGINEERS  
& ASSOCIATES  
5640 Dillard Drive  
Suite 200  
Cary, NC 27518  
(919) 852-0468  
(919) 852-0538 (Fax)  
www.simpsonenr.com  
LICENSURE NO. C-2521



REVISIONS						SHEET NO.
NO.	BY:	DATE:	NO.	BY:	DATE:	S2-59
1			3			TOTAL SHEETS
2			4			

DRAWN BY: <u>T. BANKOVICH</u>	DATE: <u>4-16</u>
CHECKED BY: <u>N.J. MABRY</u>	DATE: <u>4-16</u>
DESIGN ENGINEER OF RECORD: <u>T.J. BEACH</u>	DATE: <u>4-16</u>

**DOCUMENT NOT CONSIDERED FINAL  
UNLESS ALL SIGNATURES COMPLETED**