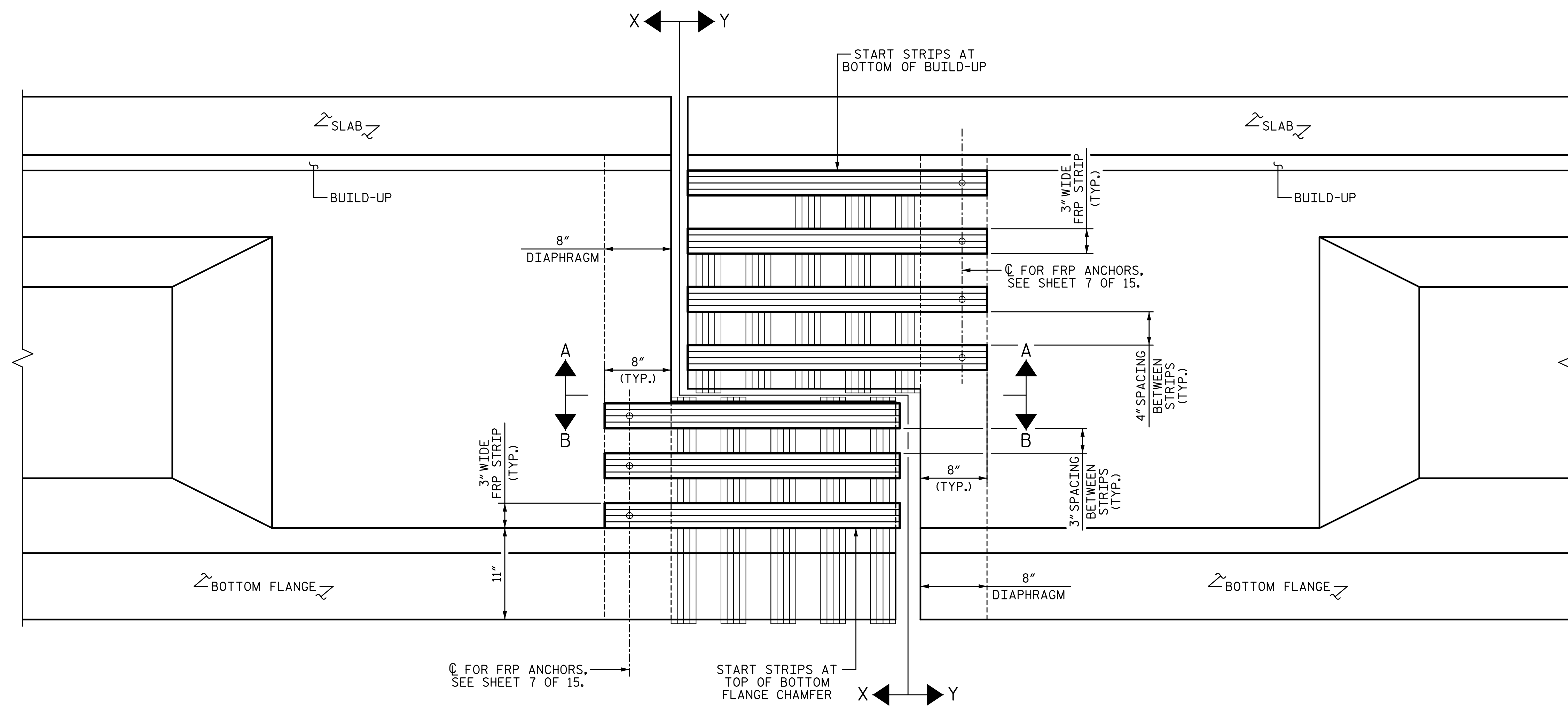


NOTES:
FOR VIEWS, SEE SHEET 11 OF 15.



ELEVATION

(EXTERIOR GIRDER 7 NORTH HINGE SHOWN, EXTERIOR GIRDER 1 SOUTH HINGE SIMILAR AND EXTERIOR GIRDER 1 NORTH HINGE AND GIRDER 7 SOUTH HINGE SIMILAR BY ROTATION)

- PREVIOUS LAYER
- CURRENT LAYER

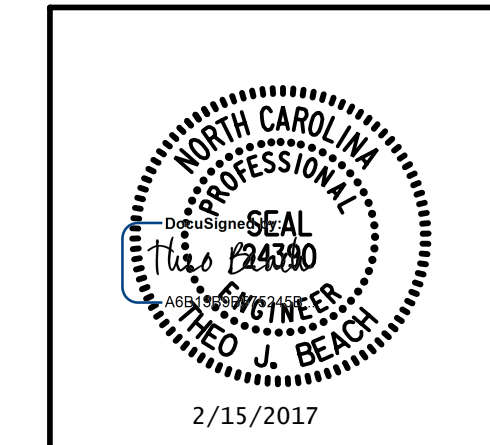
2/15/2017 2:04:21 PM G:\Projects\2015\Carteret 6 FRP Repair\Structures\Drawings\Final\Carteret 6_smu_repairs.dgn

PROJECT NO. B-5939
CARTERET COUNTY
BRIDGE NO.: 6

SHEET 10 OF 15

STATE OF NORTH CAROLINA
DEPARTMENT OF TRANSPORTATION
RALEIGH
PRESERVATION
FRP STRIPS LAYER 2
FOR
EXTERIOR GIRDERS
FRP HINGE REPAIR

PLANS PREPARED BY:
SE & A
IMPSON ENGINEERS ASSOCIATES
5640 Dillard Drive
Suite 200
Cary, NC 27518
(919) 852-0468
(919) 852-0538 (Fax)
www.simpsonengr.com
LICENSURE NO. C-2521



REVISIONS						SHEET NO.
NO.	BY:	DATE:	NO.	BY:	DATE:	S2-55
1			3			TOTAL SHEETS
2			4			

DRAWN BY: <u>T. BANKOVICH</u>	DATE: <u>4-16</u>
CHECKED BY: <u>N.J. MABRY</u>	DATE: <u>4-16</u>
DESIGN ENGINEER OF RECORD: <u>T.J. BEACH</u>	DATE: <u>4-16</u>

**DOCUMENT NOT CONSIDERED FINAL
UNLESS ALL SIGNATURES COMPLETED**