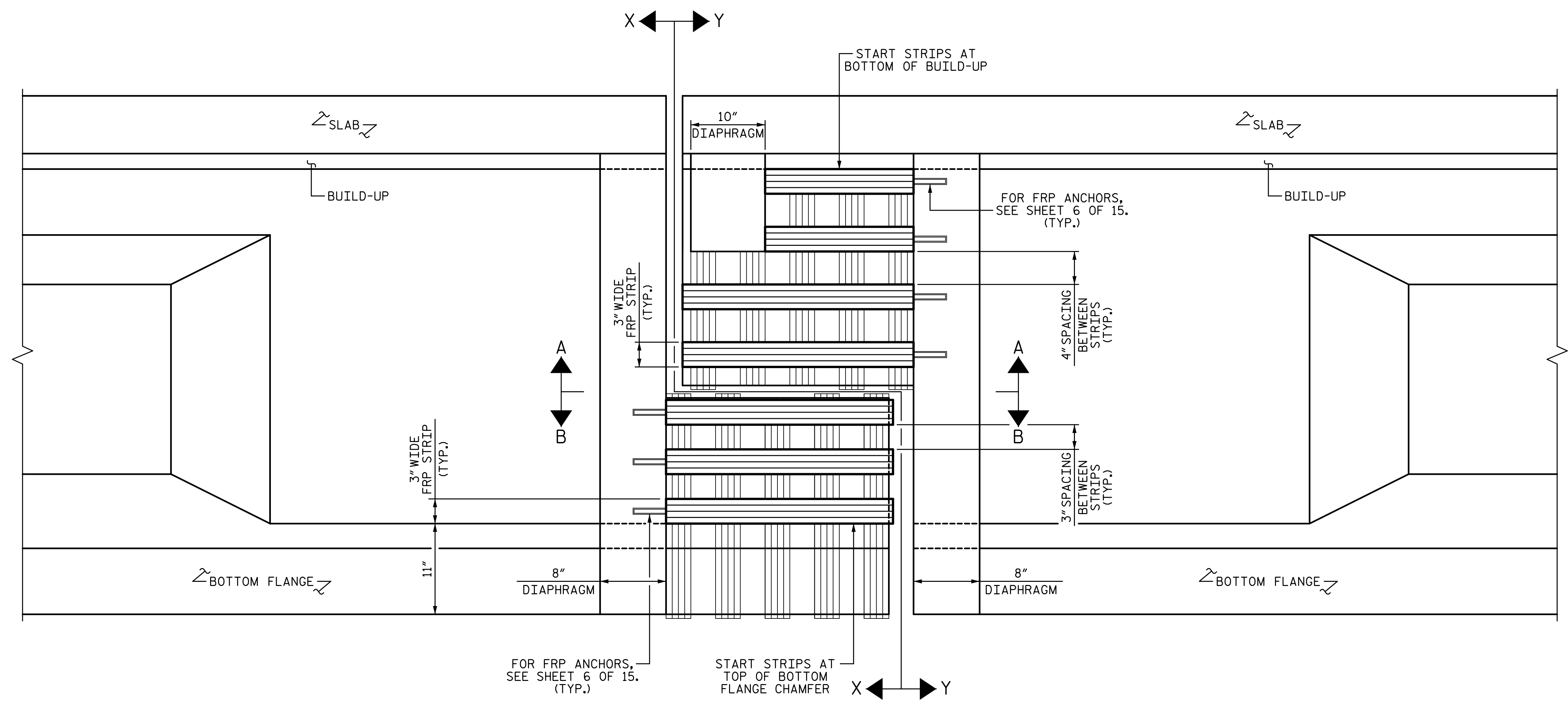




2/15/2017 2:04:21 PM G:\Projects\2015\Carteret 6 FRP Repair\Structures\Drawings\Final\Carteret 6_smu_repairs.dgn

NOTES:
 FOR VIEWS, SEE SHEET 9 OF 15.
 FRP ANCHORAGE SHALL BE INSTALLED PRIOR TO INSTALLATION OF FRP LAYER 2.



ELEVATION
 (INTERIOR GIRDER NORTH HINGE SHOWN, INTERIOR GIRDER SOUTH HINGE SIMILAR)

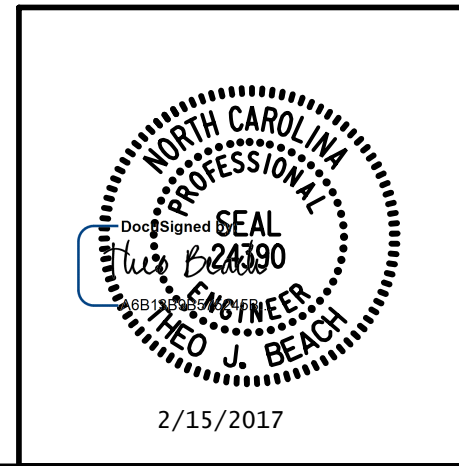
 PREVIOUS LAYER
 CURRENT LAYER

PROJECT NO. B-5939
CARTERET COUNTY
 BRIDGE NO.: 6

SHEET 8 OF 15

STATE OF NORTH CAROLINA
 DEPARTMENT OF TRANSPORTATION
 RALEIGH
 PRESERVATION
 FRP STRIPS LAYER 2
 FOR
 INTERIOR GIRDERS
 FRP HINGE REPAIR

PLANS PREPARED BY:
SE & A
 SIMPSON ENGINEERS & ASSOCIATES
 5640 Dillard Drive
 Suite 200
 Cary, NC 27518
 (919) 852-0468
 (919) 852-0538 (Fax)
 www.simpsonengr.com
 LICENSURE NO. C-2521



REVISIONS						SHEET NO.
NO.	BY:	DATE:	NO.	BY:	DATE:	S2-53
1			3			TOTAL SHEETS
2			4			

DRAWN BY: <u>T. BANKOVICH</u>	DATE: <u>4-16</u>
CHECKED BY: <u>N.J. MABRY</u>	DATE: <u>4-16</u>
DESIGN ENGINEER OF RECORD: <u>T.J. BEACH</u>	DATE: <u>4-16</u>

**DOCUMENT NOT CONSIDERED FINAL
 UNLESS ALL SIGNATURES COMPLETED**