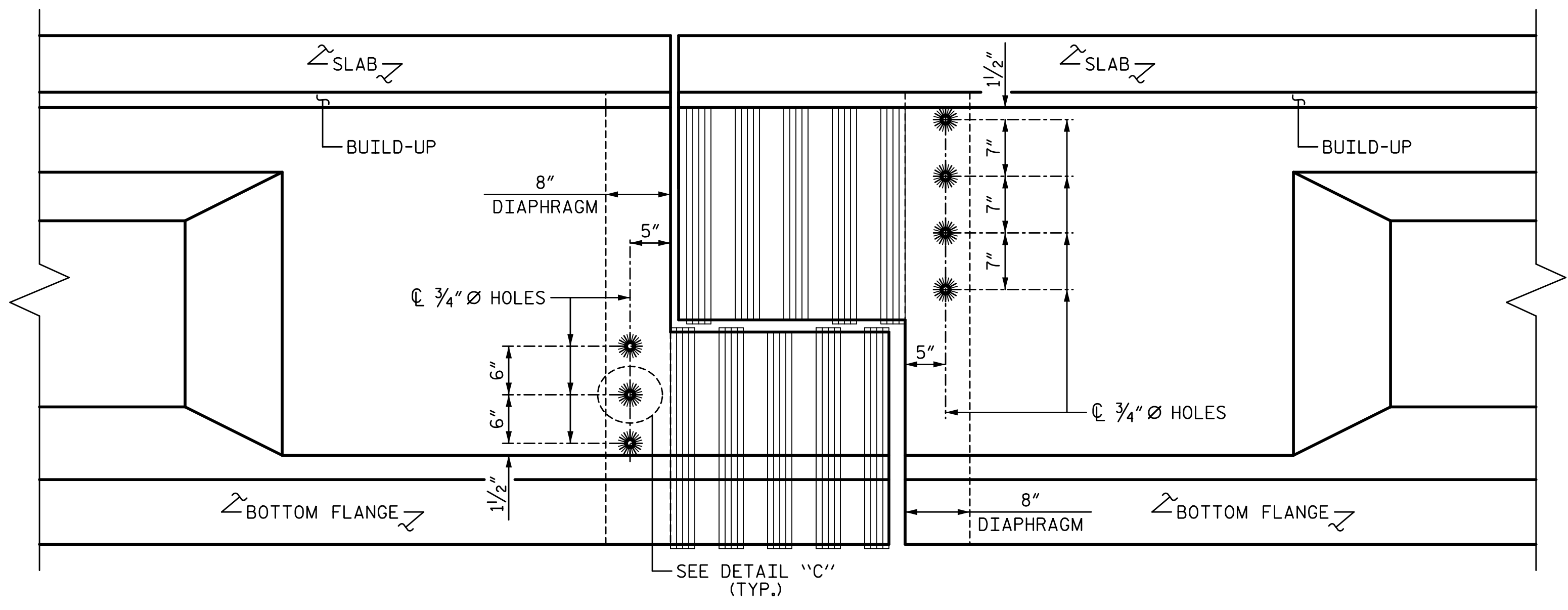
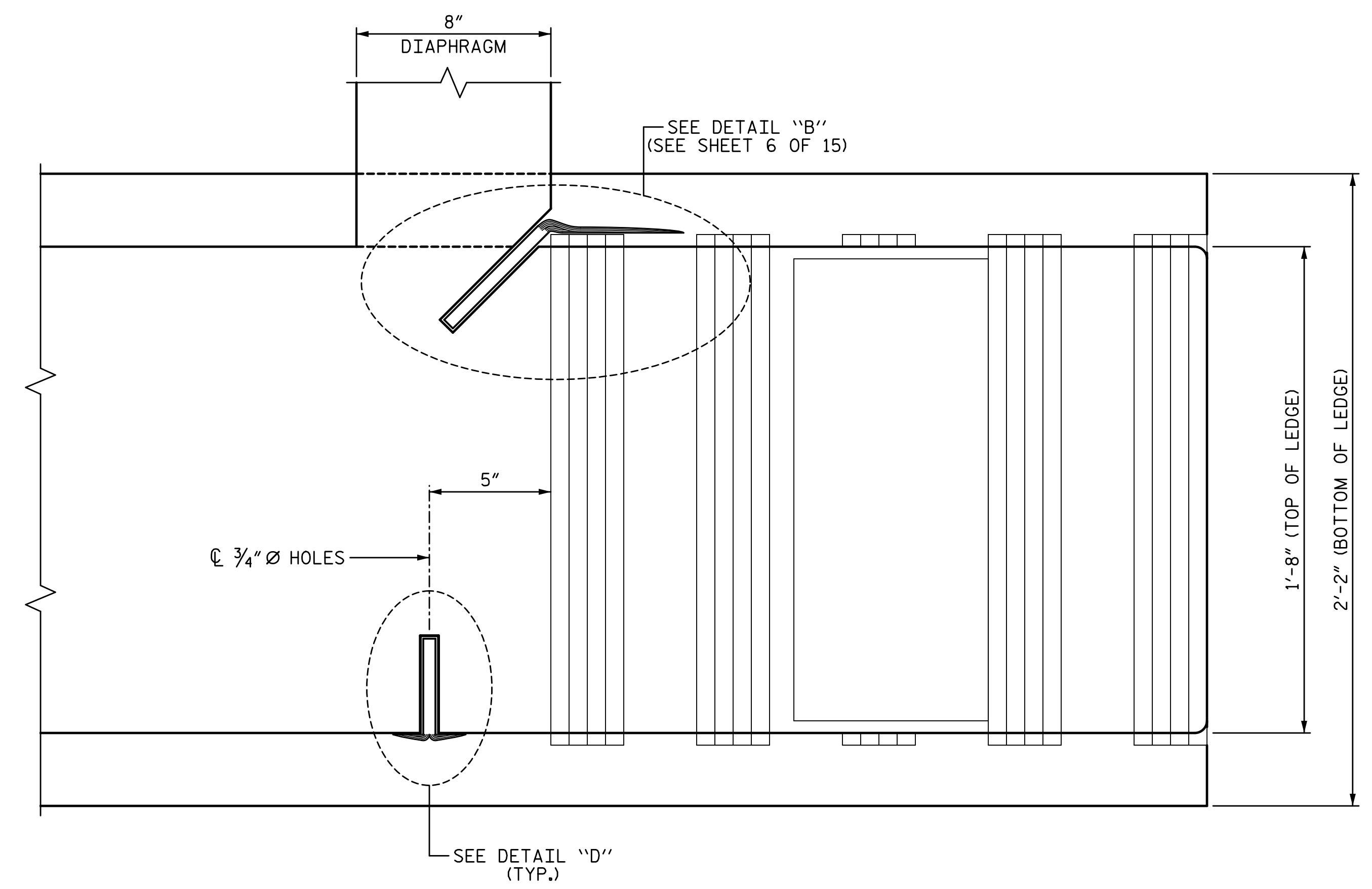


2/15/2017 2:04:21 PM G:\Projects\2015\Carteret 6 FRP Repair\Structures\Drawings\Final\Carteret 6_smu_repairs.dgn

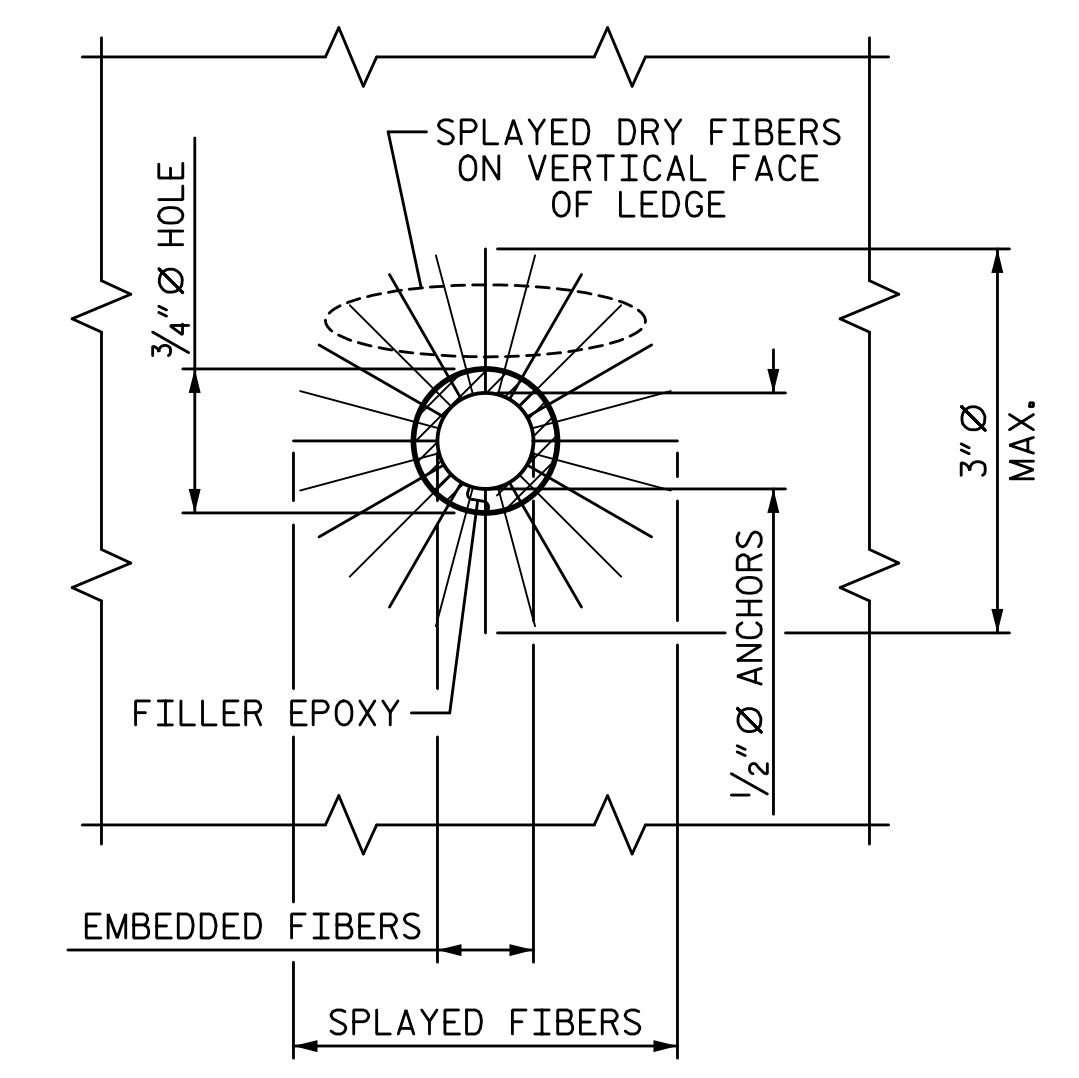


ELEVATION

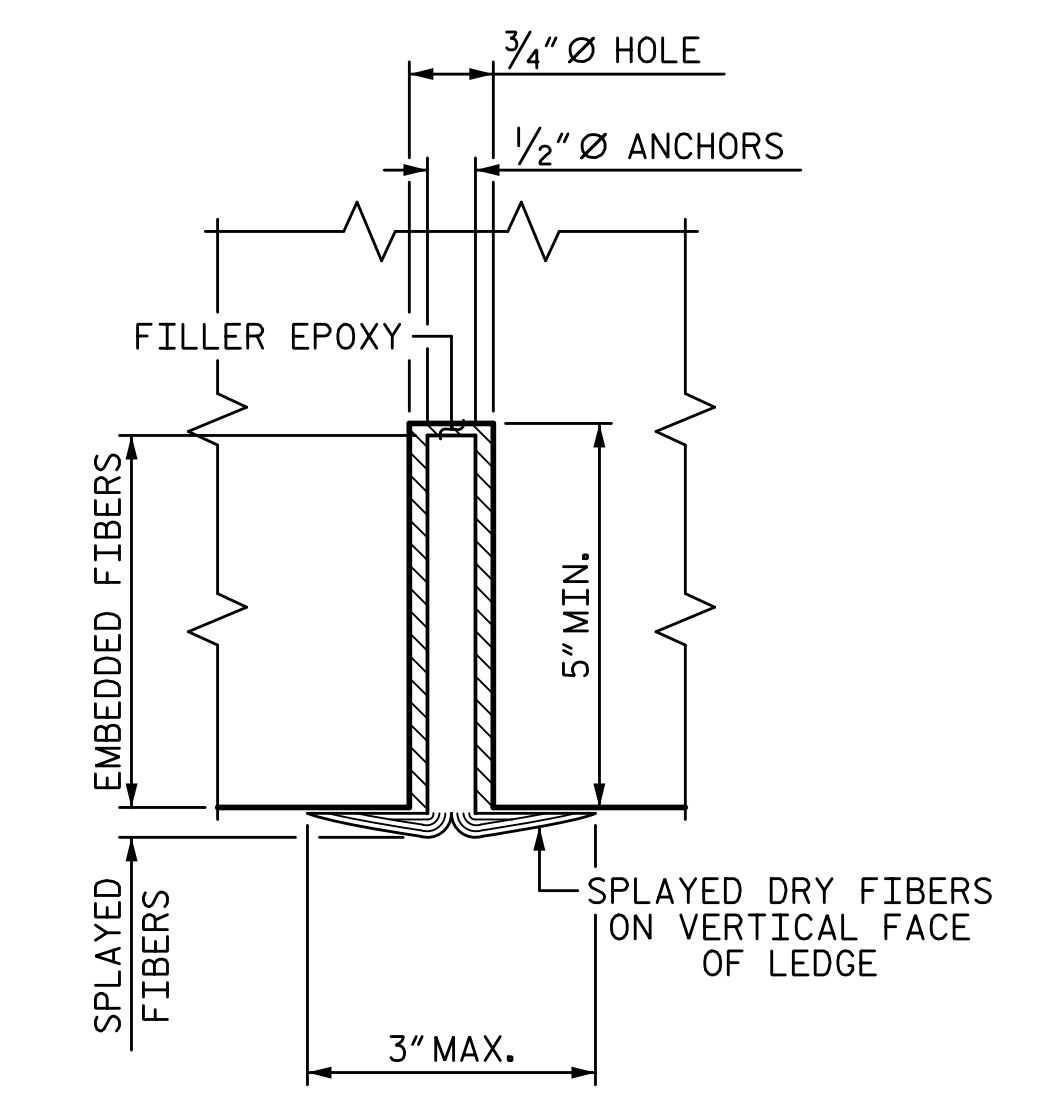
(EXTERIOR FACE OF ANCHORAGE SHOWN, FOR INTERIOR FACE OF ANCHORAGE SEE SHEET 6 OF 15)



PLAN



DETAIL "C"



DETAIL "D"

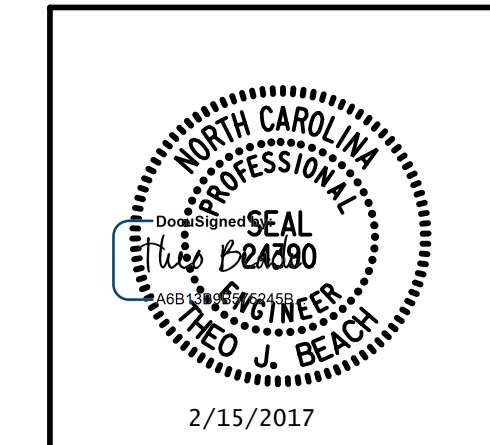
14 ANCHORS REQUIRED PER EXTERIOR HINGE LOCATION

PROJECT NO. B-5939
CARTERET COUNTY
 BRIDGE NO.: 6

SHEET 7 OF 15

PLANS PREPARED BY:

SIMPSON
ENGINEERS
& ASSOCIATES
 5640 Dillard Drive
 Suite 200
 Cary, NC 27518
 (919) 852-0468
 (919) 852-0538 (Fax)
 www.simpsonengr.com
 LICENSURE NO. C-2521



STATE OF NORTH CAROLINA
 DEPARTMENT OF TRANSPORTATION
 RALEIGH
 PRESERVATION
FRP ANCHORAGE
FOR EXTERIOR GIRDERS
 FRP HINGE REPAIR

REVISIONS						SHEET NO.
NO.	BY:	DATE:	NO.	BY:	DATE:	S2-52
1			3			TOTAL SHEETS
2			4			

DOCUMENT NOT CONSIDERED FINAL
UNLESS ALL SIGNATURES COMPLETED

DRAWN BY: T. BANKOVICH DATE: 4-16
 CHECKED BY: N.J. MABRY DATE: 4-16
 DESIGN ENGINEER OF RECORD: T.J. BEACH DATE: 4-16