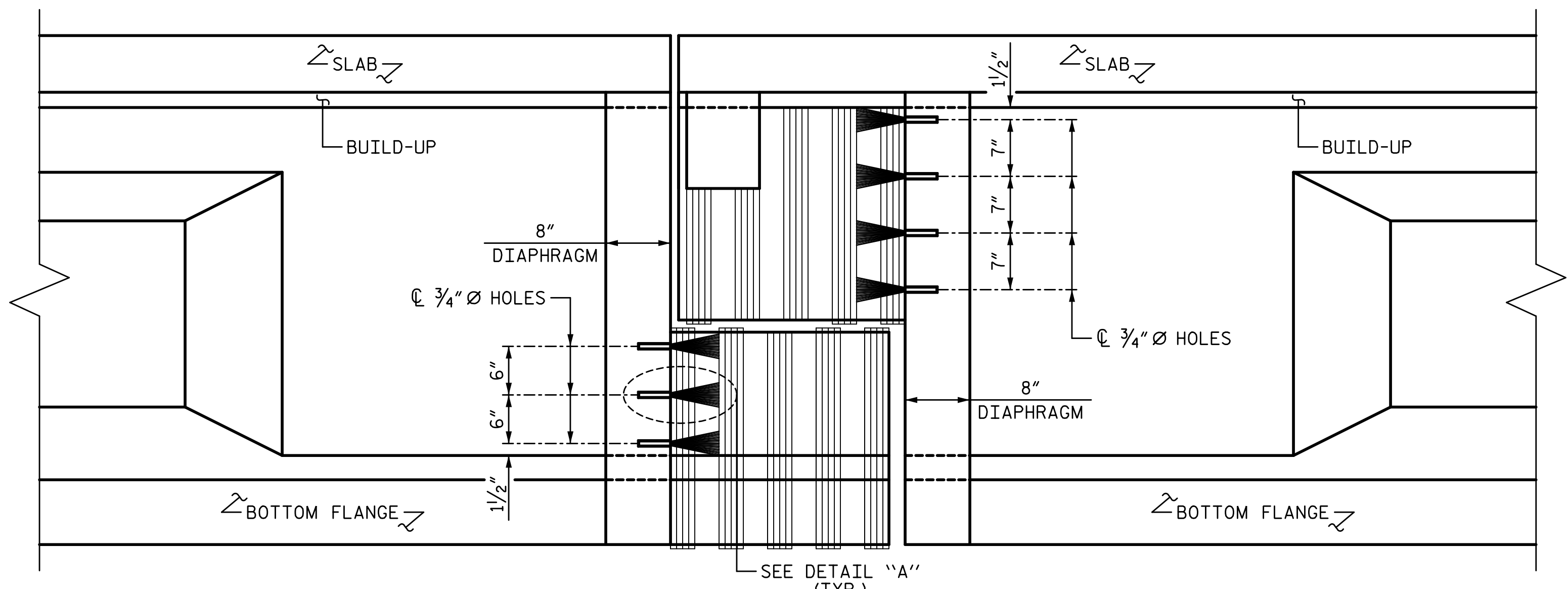
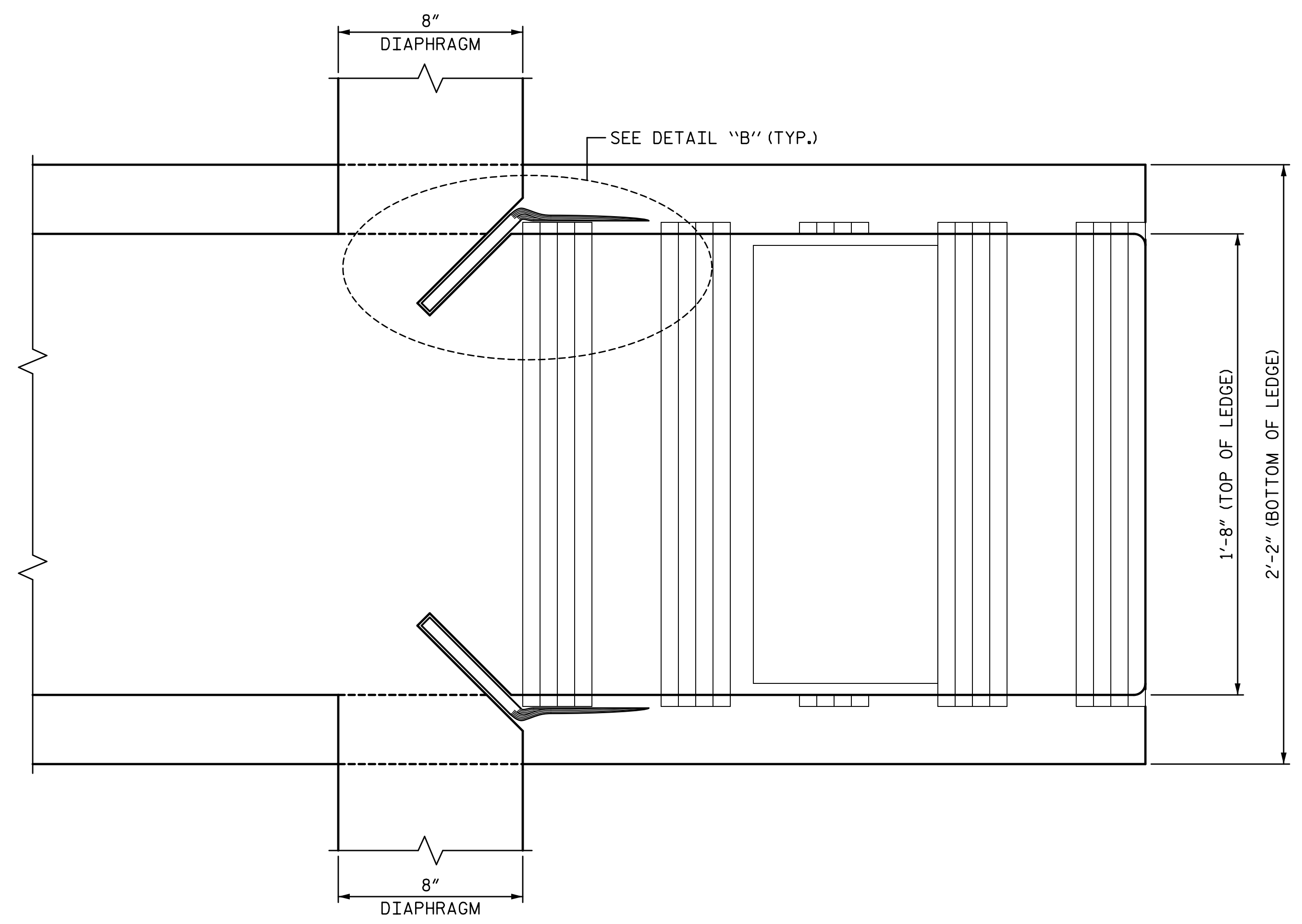


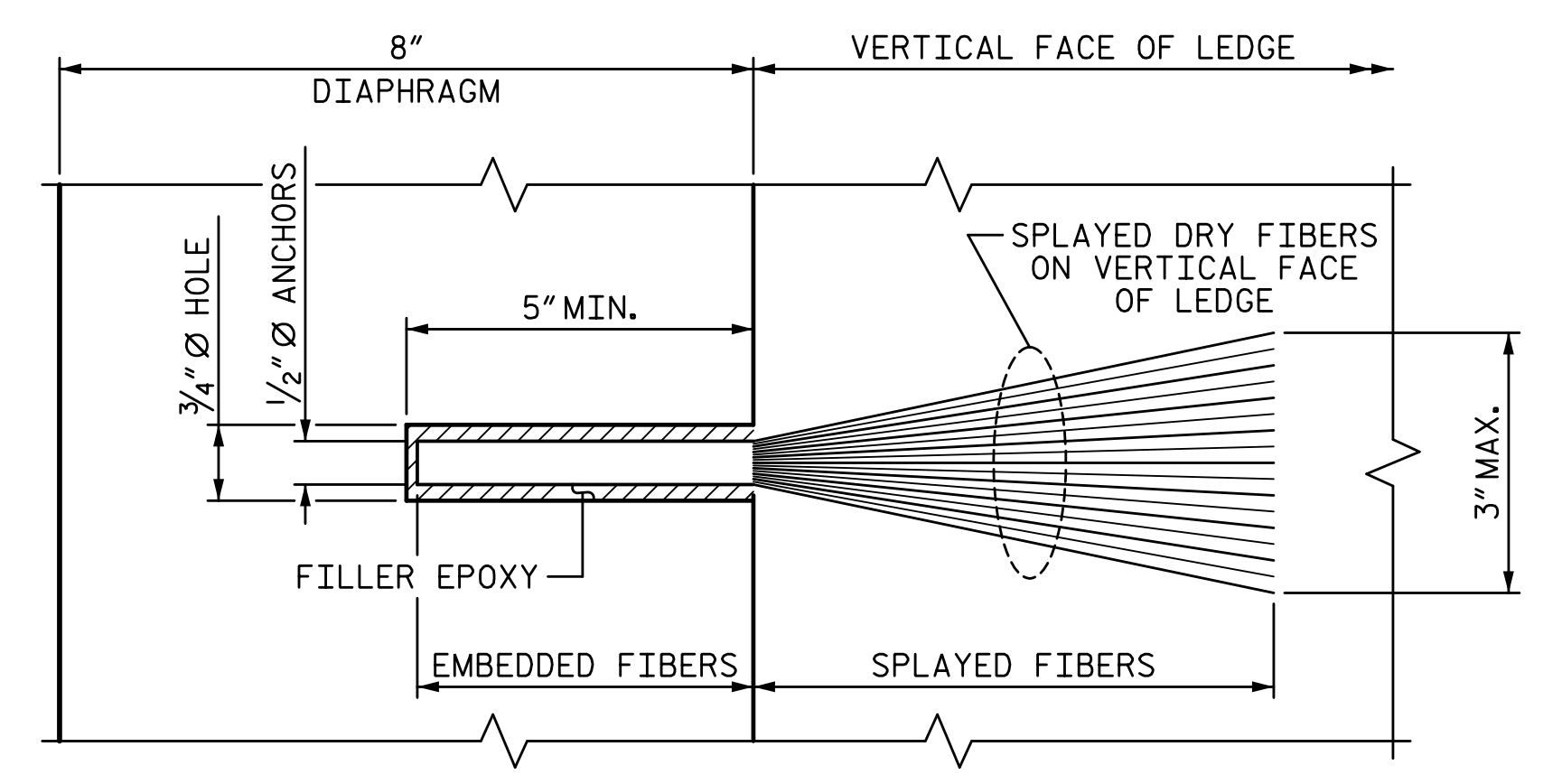
2/15/2017 2:04:21 PM G:\Projects\2015\Carteret 6 FRP Repair\Structures\Drawings\Final\Carteret 6_smu_repairs.dgn



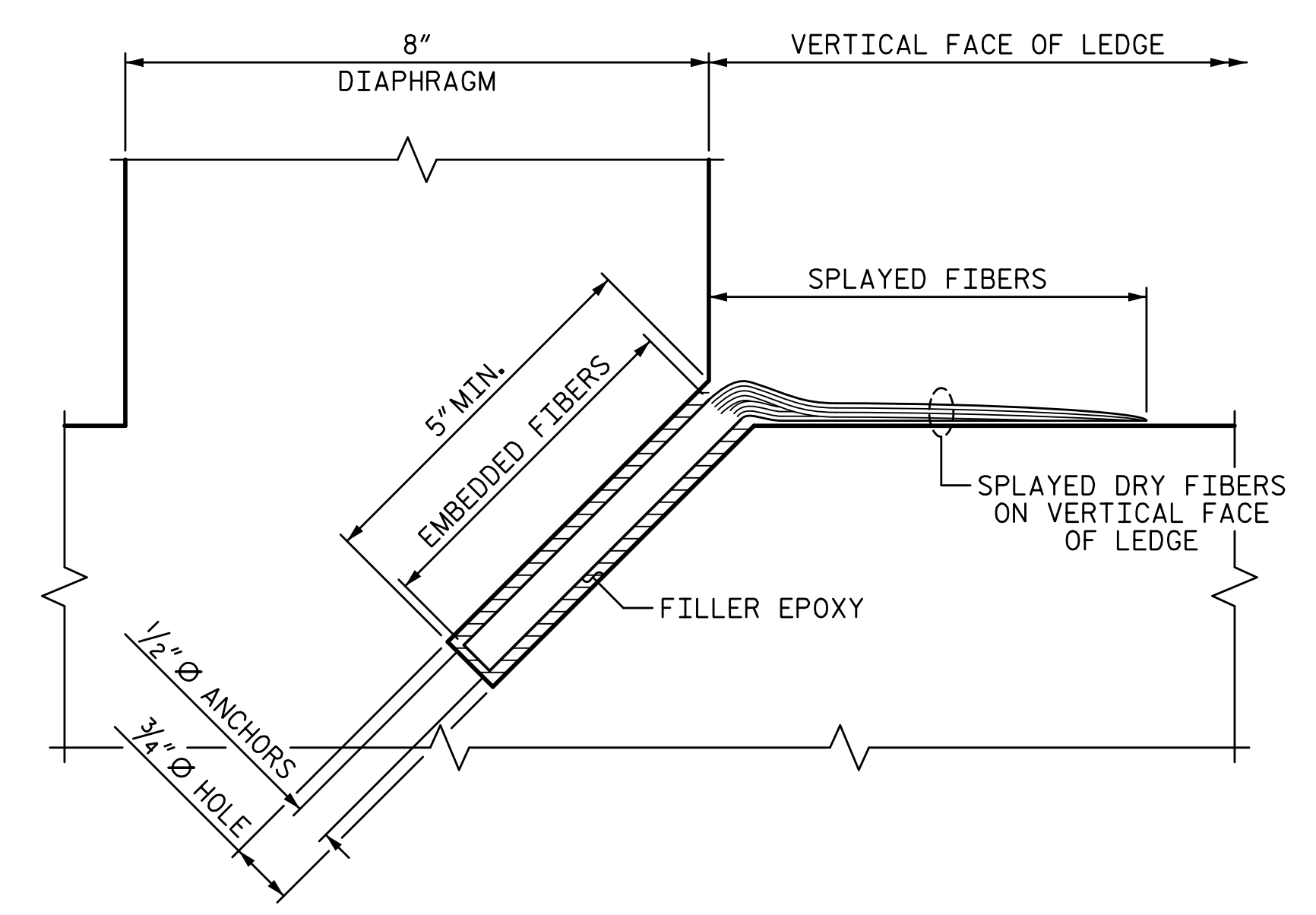
ELEVATION
(TYP. EA. FACE OF DAP AND LEDGE)
PREVIOUS LAYER



PLAN
(LEDGE SHOWN, DAP SIMILAR)



DETAIL "A"
(LEDGE SHOWN, DAP SIMILAR)



DETAIL "B"
(LEDGE SHOWN, DAP SIMILAR)

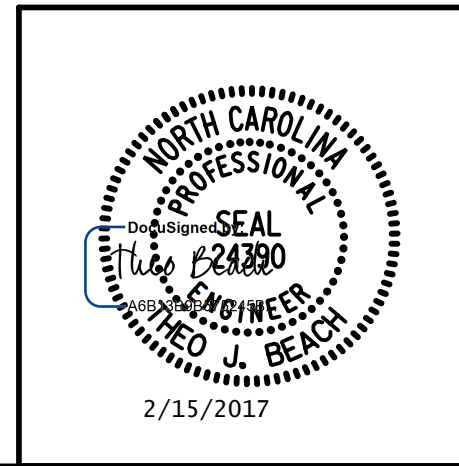
14 ANCHORS REQUIRED PER INTERIOR HINGE LOCATION

PROJECT NO. B-5939
CARTERET COUNTY
BRIDGE NO.: 6

SHEET 6 OF 15

STATE OF NORTH CAROLINA
DEPARTMENT OF TRANSPORTATION
RALEIGH
PRESERVATION
**FRP ANCHORAGE
FOR INTERIOR GIRDERS**
FRP HINGE REPAIR

PLANS PREPARED BY:
SE & A
SIMPSON ENGINEERS ASSOCIATES
5640 Dillard Drive
Suite 200
Cary, NC 27518
(919) 852-0468
(919) 852-0538 (Fax)
www.simpsonengr.com
LICENSURE NO. C-2521



REVISIONS						SHEET NO.
NO.	BY:	DATE:	NO.	BY:	DATE:	S2-51
1			3			TOTAL SHEETS
2			4			

**DOCUMENT NOT CONSIDERED FINAL
UNLESS ALL SIGNATURES COMPLETED**

DRAWN BY: T. BANKOVICH DATE: 4-16
CHECKED BY: N.J. MABRY DATE: 4-16
DESIGN ENGINEER OF RECORD: T.J. BEACH DATE: 4-16