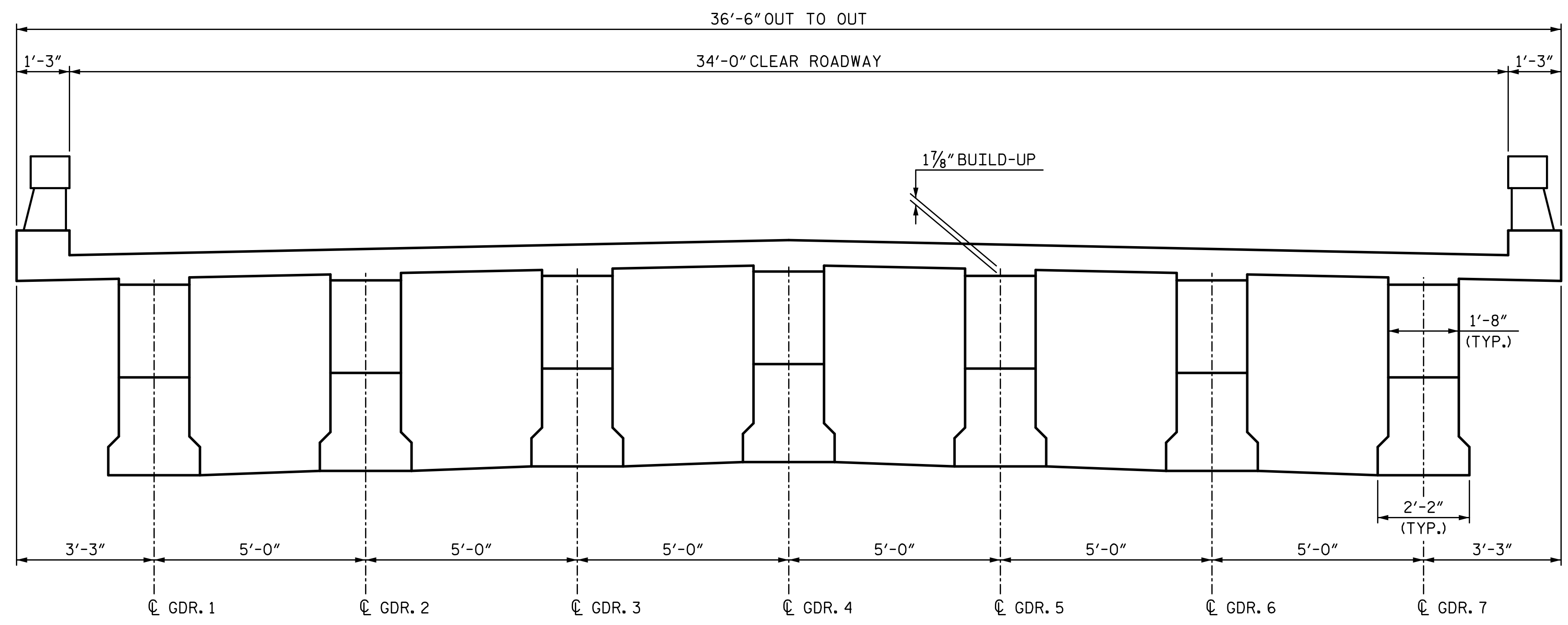


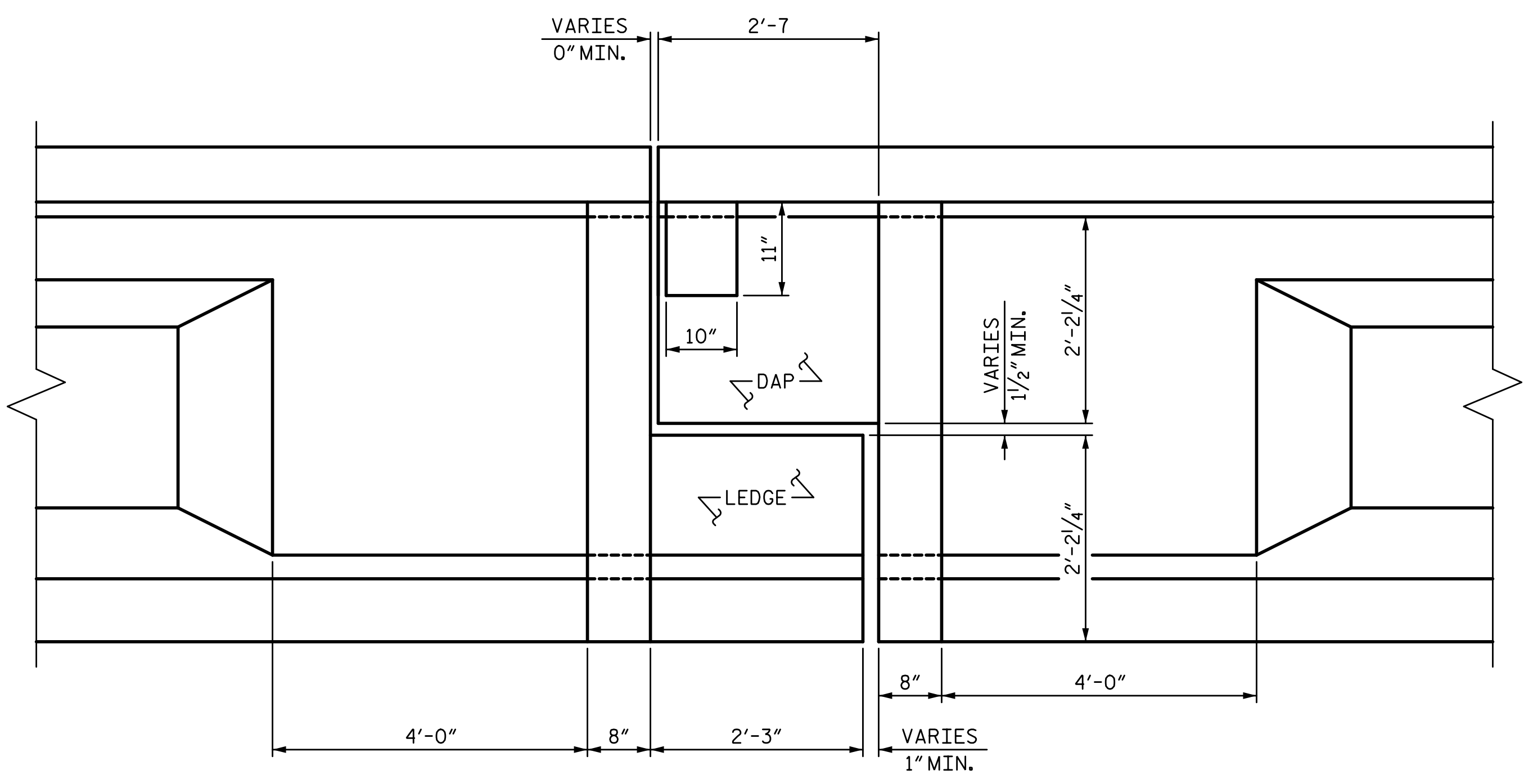
2/15/2017 2:04:20 PM G:\Projects\2015\Carteret 6 FRP Repair\Structures\Drawings\Final\Carteret 6_smu_repairs.dgn



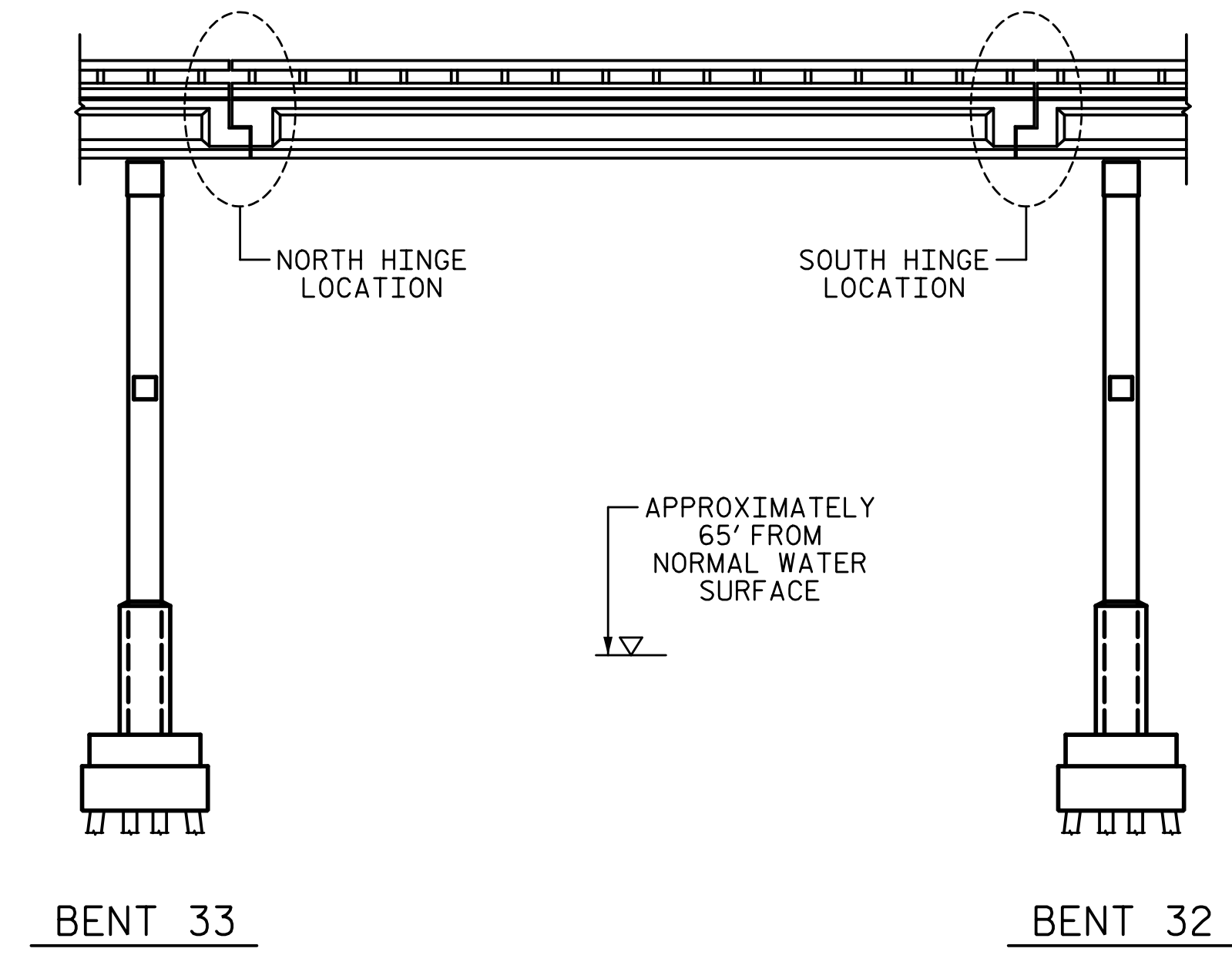
TYPICAL SECTION
(SECTION TAKEN AT HINGE LOCATIONS)

NOTES:

- GIRDER STRENGTHENING INCLUDES ALL GIRDERS IN THE NORTH AND SOUTH HINGE LOCATIONS.
- FRP = FIBER REINFORCED POLYMER
- DAP REFERS TO UPPER PORTION OF DROP-IN SECTION AT HINGE.
- LEDGE REFERS TO LOWER PORTION OF CANTILEVER SECTION AT HINGE.
- FOR SURFACE PREPARATION, SEE "FIBER REINFORCED POLYMER (FRP) STRENGTHENING" SPECIAL PROVISION.
- FOR FRP MATERIAL REQUIREMENTS, SEE "FIBER REINFORCED (FRP) STRENGTHENING" SPECIAL PROVISION.
- FOR PROTECTIVE COATING APPLICATION AFTER FRP SYSTEM INSTALLATION, SEE "FIBER REINFORCED (FRP) STRENGTHENING" SPECIAL PROVISION.
- ALL CORNERS SHALL BE ROUNDED BEFORE APPLYING FRP MATERIAL, SEE "FIBER REINFORCED POLYMER (FRP) STRENGTHENING" SPECIAL PROVISION.
- DRILLING OF FRP ANCHORAGE HOLES MAY VARY SLIGHTLY IN ORDER TO AVOID EXISTING REINFORCEMENT IN THE CONCRETE DIAPHRAGM.
- THE DIMENSIONS OF THE EXISTING HINGE INDICATED ON THE PLANS ARE FROM THE BEST INFORMATION AVAILABLE. SINCE THIS INFORMATION IS SHOWN FOR THE CONVENIENCE OF THE CONTRACTOR, THE CONTRACTOR SHALL HAVE NO CLAIM WHATSOEVER AGAINST THE DEPARTMENT OF TRANSPORTATION FOR ANY DELAYS OR ADDITIONAL COST INCURRED BASED ON DIFFERENCE BETWEEN THE EXISTING HINGE SHOWN ON THE PLANS AND THE ACTUAL CONDITIONS AT THE PROJECT SITE.
- MINIMUM END CAPACITY (AFTER FRP REPAIR) = 216.67 KPS/GIRDER.

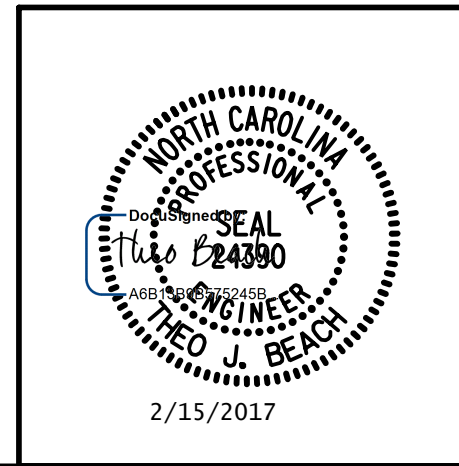


SECTION THRU HINGE
(NORTH HINGE SHOWN, SOUTH HINGE SIMILAR)



SPAN 33
(@ CHANNEL)

PLANS PREPARED BY:
SE & A
IMPSON ENGINEERS & ASSOCIATES
5640 Dillard Drive
Suite 200
Cary, NC 27518
(919) 852-0468
(919) 852-0598 (Fax)
www.simpsonengr.com
LICENSURE NO. C-2521



PROJECT NO. B-5939
CARTERET COUNTY
BRIDGE NO.: 6
SHEET 1 OF 15

STATE OF NORTH CAROLINA DEPARTMENT OF TRANSPORTATION RALEIGH PRESERVATION					
TYPICAL SECTION AT HINGES					
FRP HINGE REPAIR					
REVISIONS					
NO.	BY:	DATE:	NO.	BY:	DATE:
1			3		
2			4		
					SHEET NO. S2-46 TOTAL SHEETS

DRAWN BY: T. BANKOVICH DATE: 4-16
CHECKED BY: N.J. MABRY DATE: 4-16
DESIGN ENGINEER OF RECORD: T.J. BEACH DATE: 4-16

**DOCUMENT NOT CONSIDERED FINAL
UNLESS ALL SIGNATURES COMPLETED**