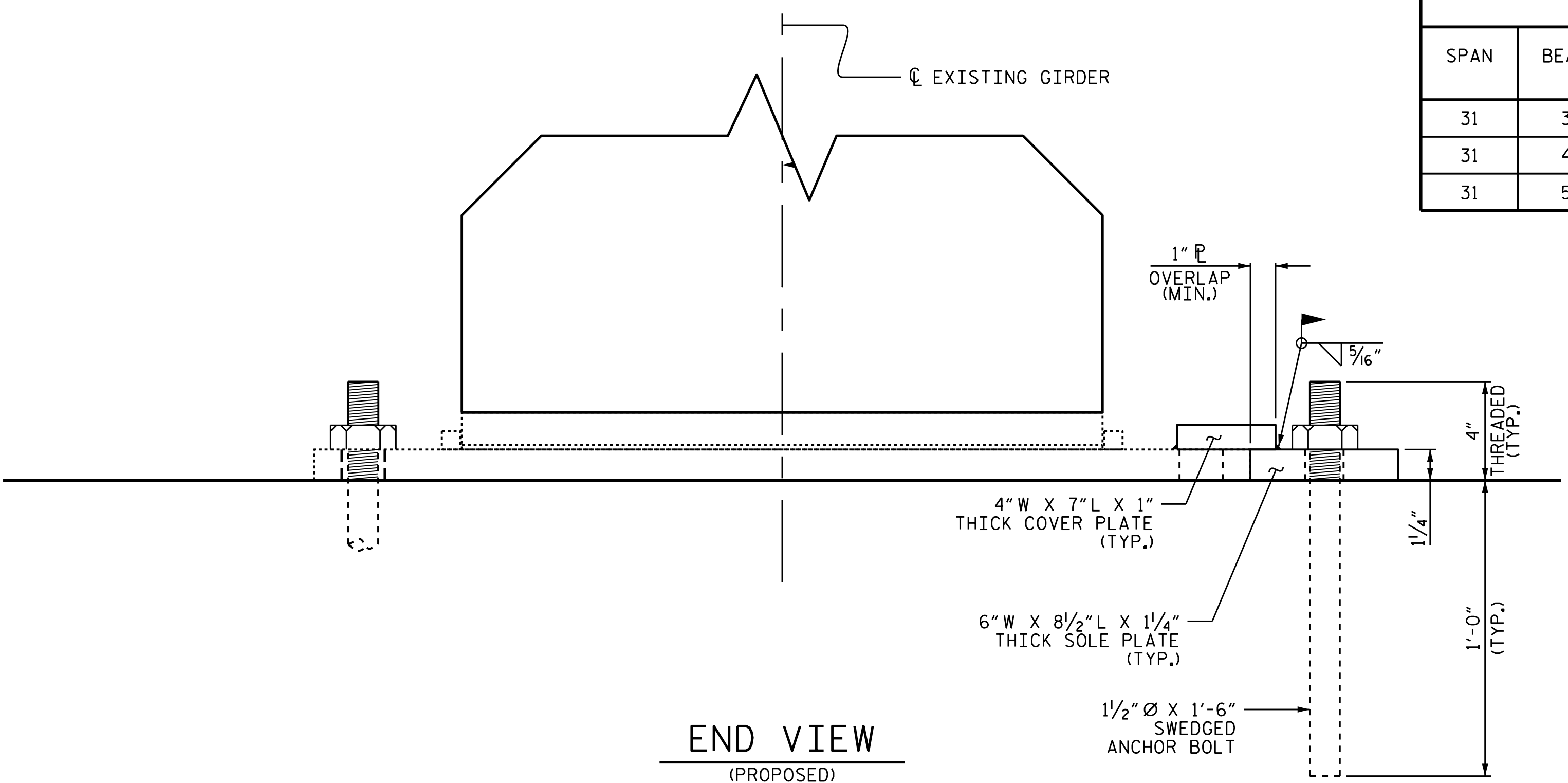


END VIEW  
(EXISTING)

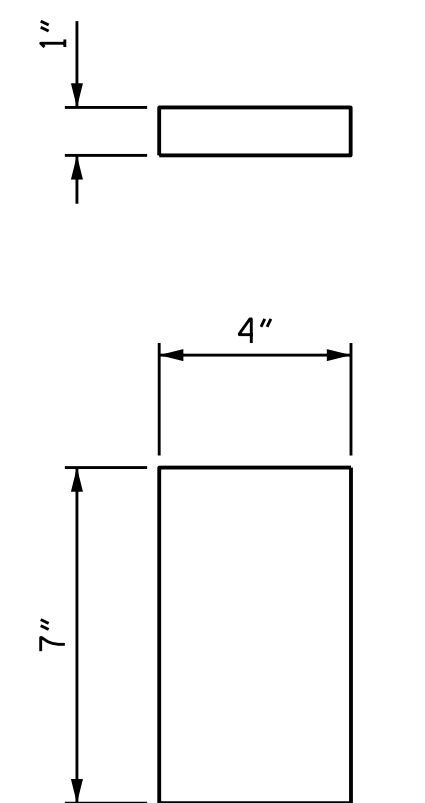


END VIEW  
(PROPOSED)

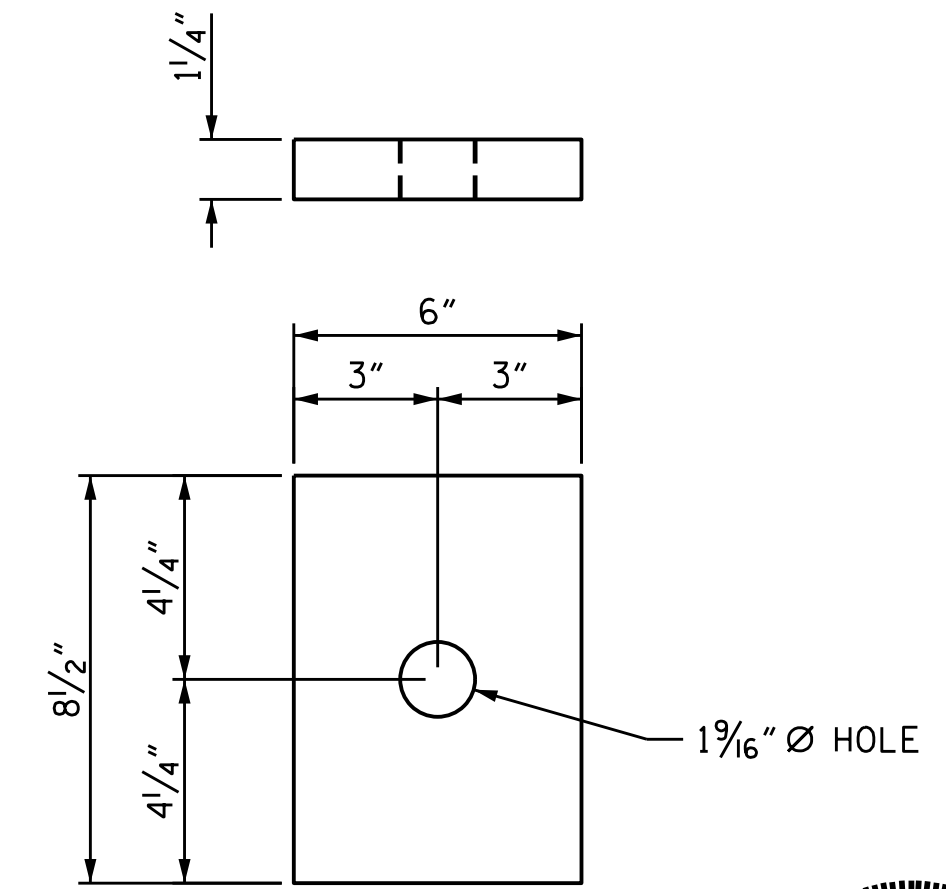
ANTICIPATED "RESET BEARINGS" LOCATIONS							
SPAN	BEAM	BENT	COVER PLATE	SOLE PLATE	ANCHOR BOLT	HEX NUT	STRUCTURAL STEEL LBS.
			EACH	EACH	EACH	EACH	
31	3	31	1	1	1	1	34.62
31	4	31	1	1	1	1	34.62
31	5	31	1	1	1	1	34.62



PLAN VIEW  
(PROPOSED)



COVER PLATE  
(3 REQ'D)



SOLE PLATE  
(3 REQ'D)

PLATE DETAILS

**NOTES:**

REPAIR ANCHOR BOLTS PRIOR TO CLEANING AND PAINTING OF BEARINGS.  
 JACK SPAN AS NEEDED AND RESET SOLE PLATES TO ORIGINAL LOCATION  
 LOCATE PROPOSED ANCHOR BOLT HOLE AS DIRECTED. ENSURE NEW ANCHOR BOLT WILL MISS EXISTING STEEL. NEW ANCHOR BOLT MAY BE SHIFTED WITHIN 1" TOLERANCE TO MISS EXISTING REINFORCING STEEL.  
 AT ALL POINTS OF SUPPORT, NUTS FOR ANCHOR BOLTS ARE TO BE TIGHTENED FINGER TIGHT AND THEN BACKED OFF 1/2 TURN, THE THREAD OF THE NUT AND BOLT SHALL THEN BE BURRED WITH A SHARP POINTED TOOL. SOLE PLATES, ANCHOR BOLTS, NUTS AND WASHERS SHALL BE GALVANIZED IN ACCORDANCE WITH THE STANDARD SPECIFICATIONS.  
 ANCHOR BOLTS SHALL MEET THE REQUIREMENTS OF ASTM A449. NUTS SHALL MEET THE REQUIREMENTS OF AASHTO M291-DH OR AASHTO M292-2H. SHOP DRAWINGS ARE NOT REQUIRED FOR ANCHOR BOLTS AND NUTS. SHOP INSPECTION IS REQUIRED.  
 ALL WELDING SHALL BE IN ACCORDANCE WITH CURRENT APPLICABLE AWS AND NCDOT STANDARD SPECIFICATIONS.  
 ALL WELDS WILL BE INSPECTED AND TESTED BY THE NCDOT MATERIALS AND TEST UNIT IN ACCORDANCE WITH THE CURRENT AWS BRIDGE WELDING CODE AND STANDARD SPECIFICATIONS.  
 ALL SURFACES OF BEARING PLATES SHALL BE SMOOTH AND STRAIGHT.  
 THE CONTRACTOR SHALL CORE INTO EXISTING BENT CAP TO INSTALL 1/2" Ø ANCHOR BOLTS. BOLTS SHALL BE ADHESIVELY ANCHORED; SEE STANDARD SPECIFICATIONS. ADHESIVE FOR NEW ANCHOR BOLTS SHALL BE AN NCDOT-APPROVED PRODUCT. FIELD TESTING WILL NOT BE REQUIRED FOR INSTALLATION OF ADHESIVELY ANCHORED BOLTS.

**CLEANING AND PAINTING OF BEARINGS SEQUENCE:**

CLEAN AND PAINT ALL EXPOSED AREAS OF PLATES, NUTS, BOLTS, AND WASHERS AT EACH BEARING IN ACCORDANCE WITH PROJECT SPECIAL PROVISIONS FOR CLEANING AND PAINTING OF EXISTING BEARING PLATES WITH HRCSA.  
 DURING ALL CLEANING AND PAINTING OPERATIONS, THE CONTRACTOR SHALL ISOLATE THE WORK AREA WITH APPROPRIATE CONTAINMENT DEVICES IN ORDER TO PREVENT ANY GENERATED DEBRIS FROM CAUSING VIOLATIONS OF CURRENT FEDERAL, STATE AND LOCAL AIR AND WATER POLLUTION REGULATIONS.  
 THE CONTRACTOR SHALL BE RESPONSIBLE FOR LEGAL DISPOSAL OF ALL DEBRIS COLLECTED BY THE CONTAINMENT DEVICES.

PROJECT NO. B-5939  
CARTERET COUNTY  
 BRIDGE NO. 6



STATE OF NORTH CAROLINA  
 DEPARTMENT OF TRANSPORTATION  
 RALEIGH

**CLEANING, PAINTING AND RESET BEARING DETAILS**

DRAWN BY : M.A. LEE DATE : 1/2017  
 CHECKED BY : G.W. DICKEY DATE : 1/2017

DOCUMENT NOT CONSIDERED FINAL UNLESS ALL SIGNATURES COMPLETED

REVISIONS						SHEET NO.
NO.	BY:	DATE:	NO.	BY:	DATE:	TOTAL SHEETS
1			3			S2-14
2			4			