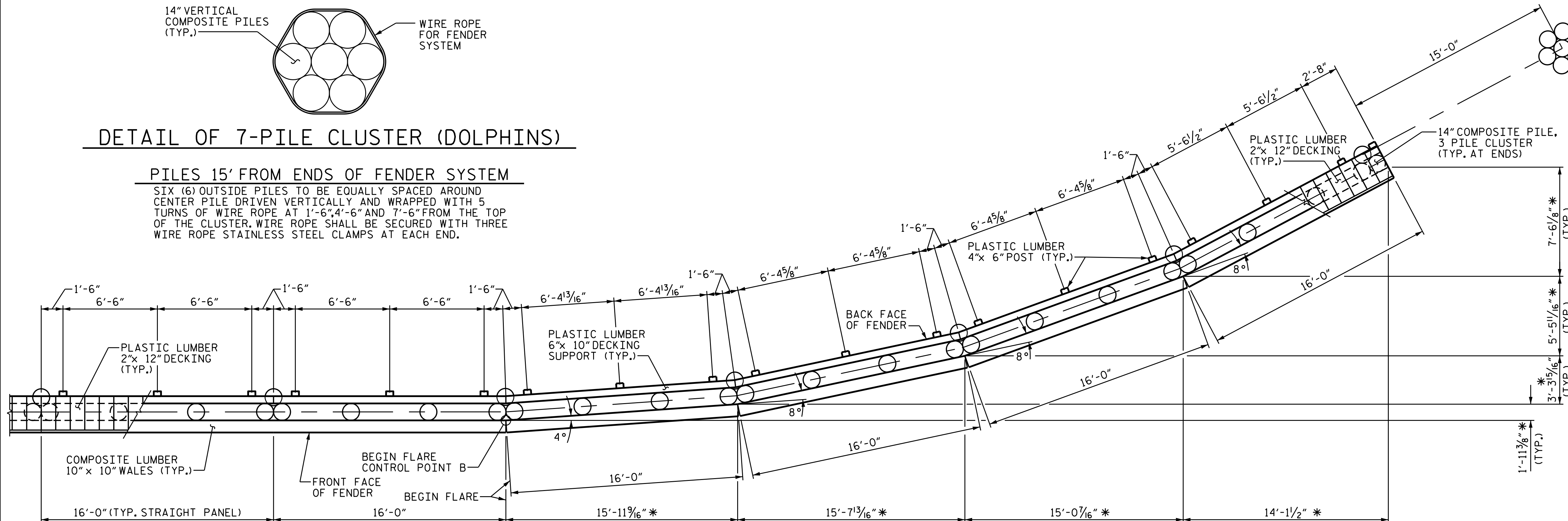


DETAIL OF 7-PILE CLUSTER (DOLPHINS)

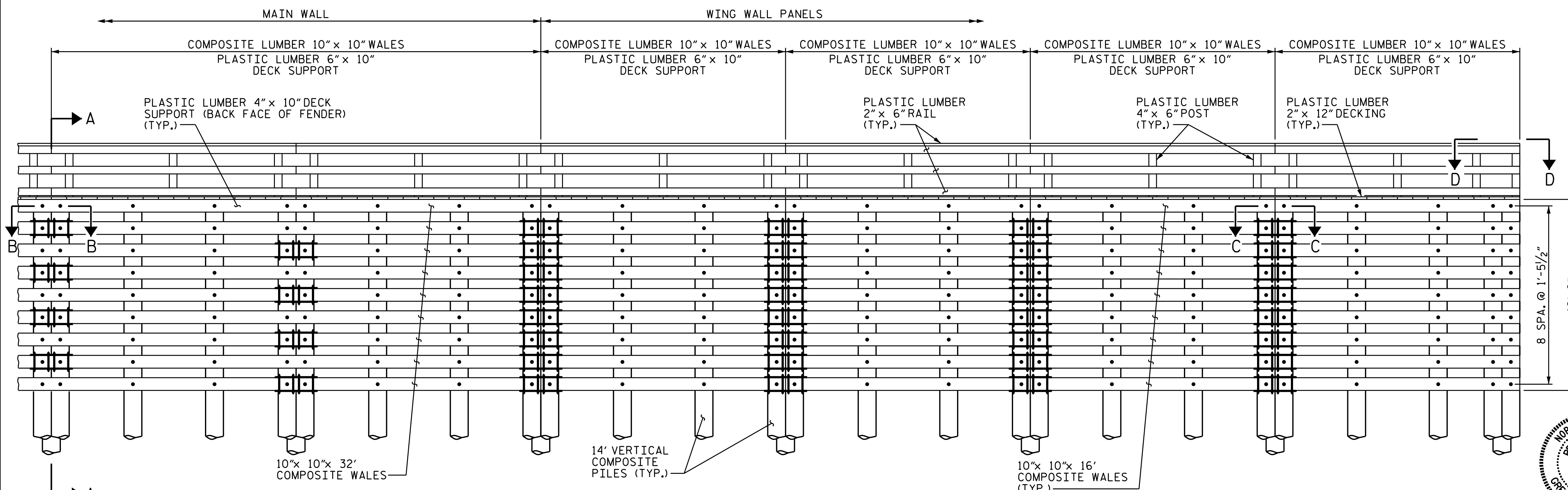
PILES 15' FROM ENDS OF FENDER SYSTEM

SIX (6) OUTSIDE PILES TO BE EQUALLY SPACED AROUND CENTER PILE DRIVEN VERTICALLY AND WRAPPED WITH 5 TURNS OF WIRE ROPE AT 1'-6", 4'-6" AND 7'-6" FROM THE TOP OF THE CLUSTER. WIRE ROPE SHALL BE SECURED WITH THREE WIRE ROPE STAINLESS STEEL CLAMPS AT EACH END.



PARTIAL PLAN VIEW (TYPICAL FLARE)

(FLARE AT CONTROL B SHOWN, CONTROL POINTS A, C & D SIMILAR (HANDRAIL NOT SHOWN FOR CLARITY))



PARTIAL ELEV. VIEW OF MAIN WALL

7 PILE CLUSTER (TYP.)
SEE "FENDER SYSTEM DETAILS" SHEET

NOTES:
PLASTIC LUMBER AND COMPOSITE LUMBER DIMENSIONS SHOWN ARE BASED ON NOMINAL LUMBER DIMENSIONS.
* DIMENSIONS TYPICAL FOR 16'-0" TYPICAL STRAIGHT PANELS.

PROJECT NO. B-5938
CARTERET COUNTY
BRIDGE: 68
SHEET 3 OF 4



STATE OF NORTH CAROLINA
DEPARTMENT OF TRANSPORTATION
RALEIGH

FENDER SYSTEM DETAILS

DRAWN BY: W.J. HARRIS DATE: 12/16
CHECKED BY: M.A. LEE DATE: 12/16

DOCUMENT NOT CONSIDERED FINAL UNLESS ALL SIGNATURES COMPLETED

REVISIONS						SHEET NO.	
NO.	BY:	DATE:	NO.	BY:	DATE:	F-3	
1			3			TOTAL SHEETS	
2			4				