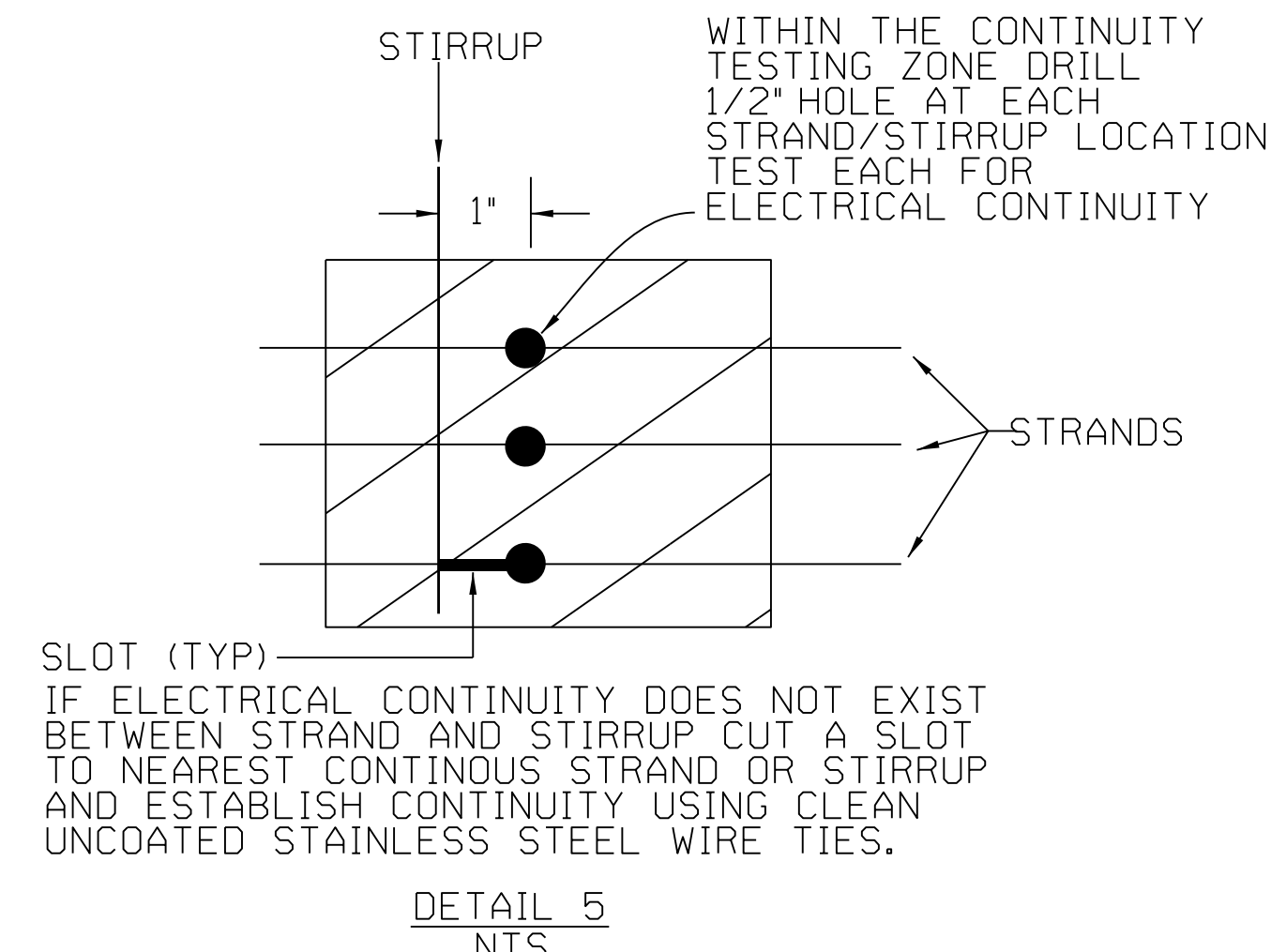
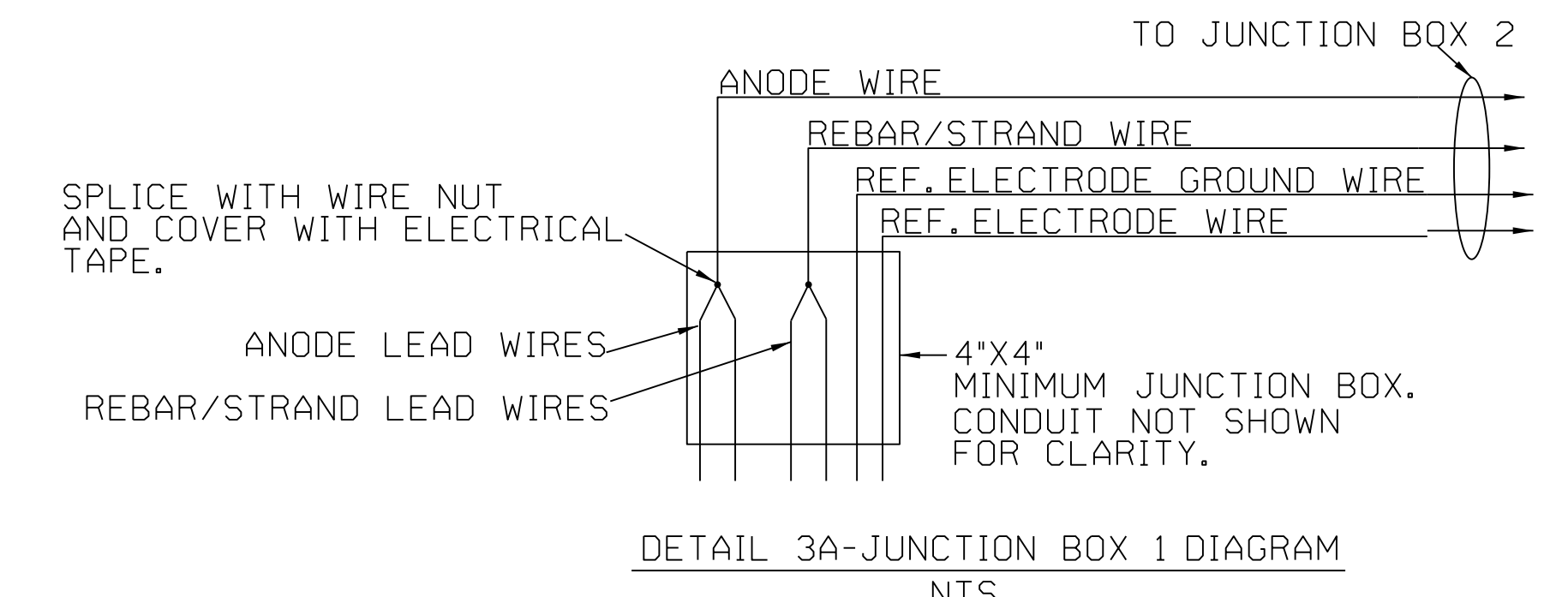
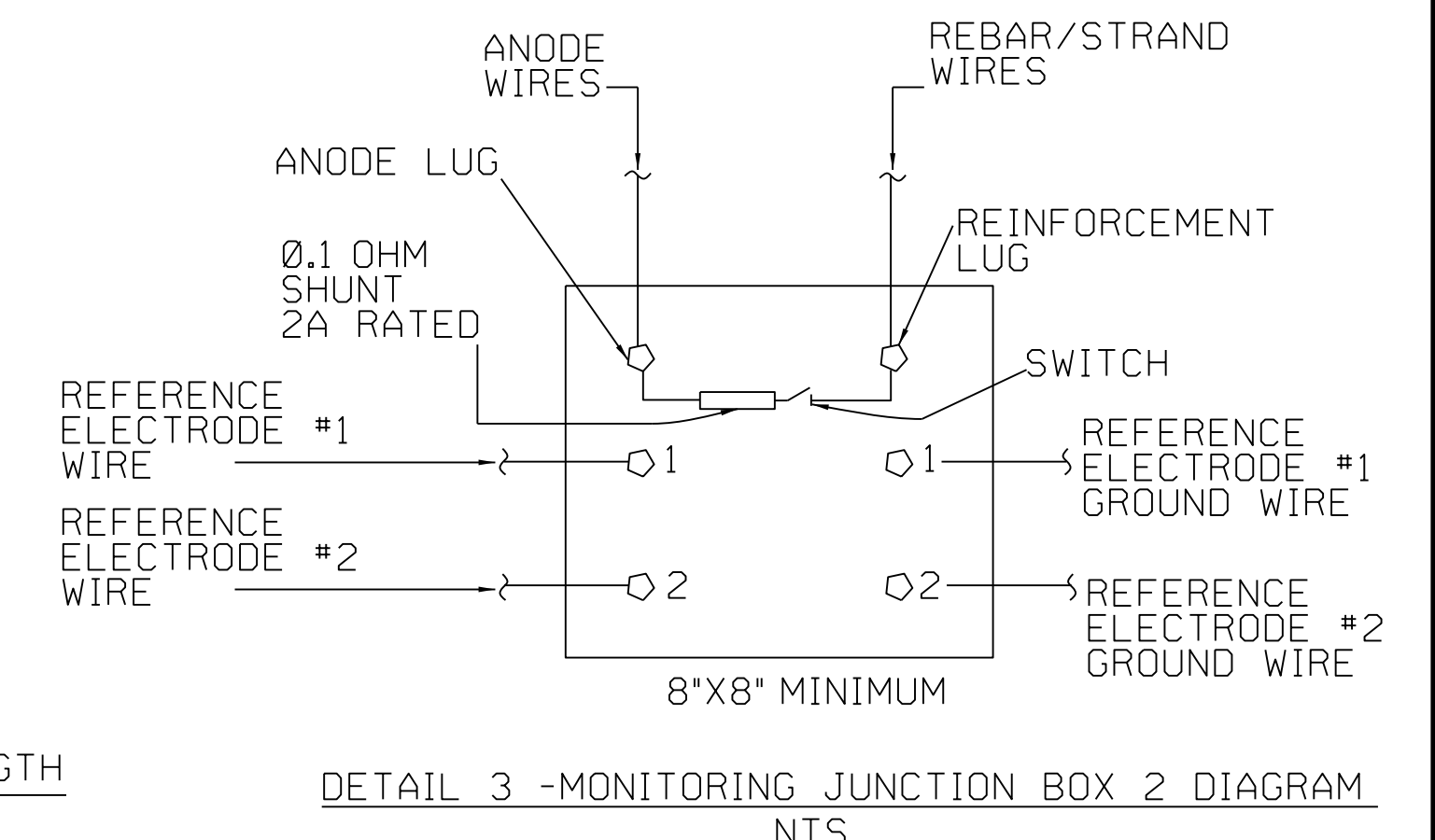
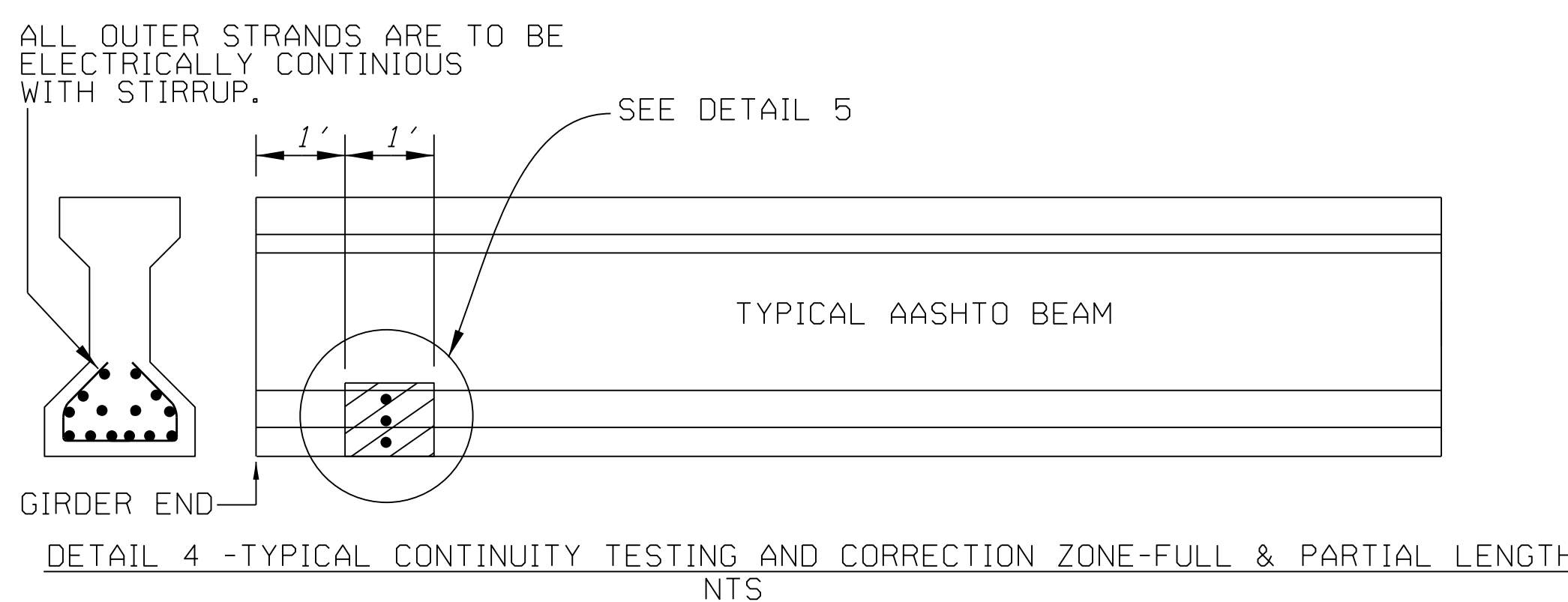
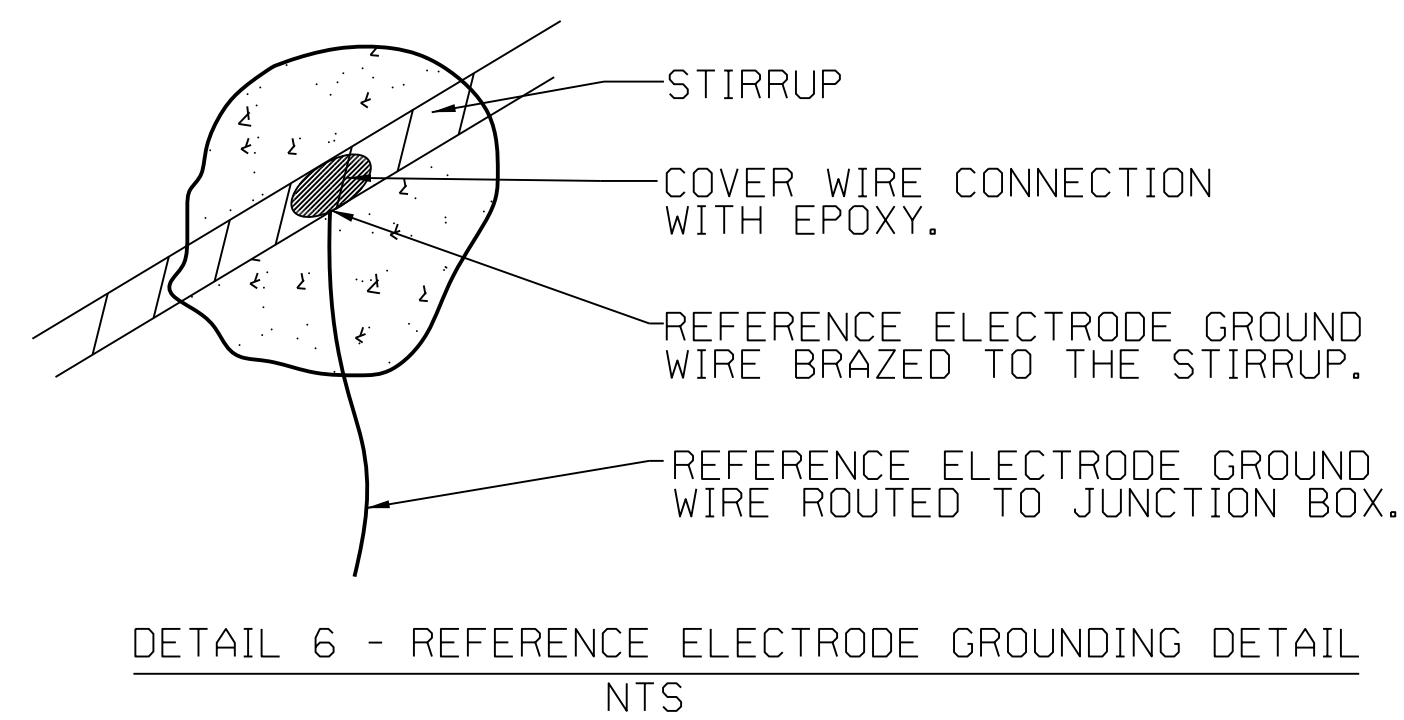
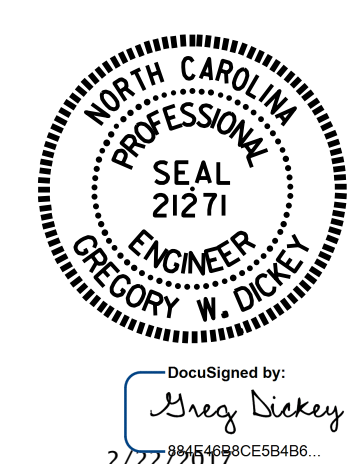


- NOTES:
1. THE REFERENCE ELECTRODE GROUND WIRE IS ALLOWED TO BE BRAZED TO A STIRRUP, PROVIDED THAT THE BRAZING CONNECTION IS A MINIMUM OF 18" AWAY FROM THE INTENDED REFERENCE ELECTRODE INSTALLATION LOCATION (SEE DETAIL 6).
  2. DO NOT EXPOSE STRAND/REBAR/STIRRUP WHILE INSTALLING REFERENCE ELECTRODE.
  3. THE REFERENCE ELECTRODE SHALL BE INSTALLED PARALLEL TO STRANDS. FILL THE EXCAVATION HOLE WITH APPROVED PORTLAND CEMENT PATCHING GROUT WITH 15,000 OHM-CM RESISTIVITY OR LESS. THE REFERENCE ELECTRODE SHALL BE FULLY ENCAPSULATED WITH CEMENTITIOUS BACKFILL MATERIAL. NO VOIDS SHALL BE PERMITTED.
  4. THE WIRES FOR THE REFERENCE ELECTRODE SHALL BE ROUTED INSIDE THE CONDUIT TO THE JUNCTION BOX WITHOUT SPLICING.



PROJECT NO. B-5938  
CARTERET COUNTY  
 BRIDGE NO. 68  
 SHEET 3 OF 4



STATE OF NORTH CAROLINA  
 DEPARTMENT OF TRANSPORTATION  
 RALEIGH  
 PRESTRESSED CONCRETE GIRDER WITH THERMAL SPRAY ANODE DETAILS

REVISIONS						SHEET NO.	
NO.	BY:	DATE:	NO.	BY:	DATE:	S1-42	
1			3			TOTAL SHEETS	
2			4			-	

DOCUMENT NOT CONSIDERED FINAL UNLESS ALL SIGNATURES COMPLETED

CHECKED BY : G.W.DICKEY DATE : 2/2017

DRAWN: KE 12/29/16  
 CHECKED: SV 12/29/16

**Siva Corrosion Services, Inc.**  
 NDT • Corrosion • Materials  
 www.SivaCorrosion.com  
 1313 Wilmington Pike Suite 2B  
 West Chester, PA 19380-19383  
 P(610) 692-6551