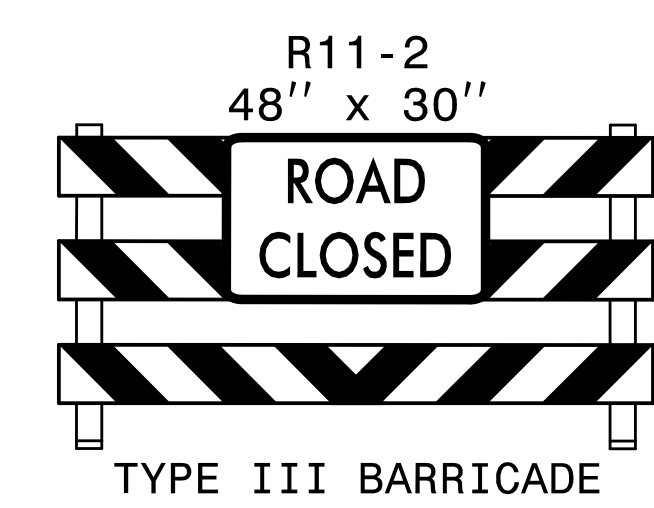
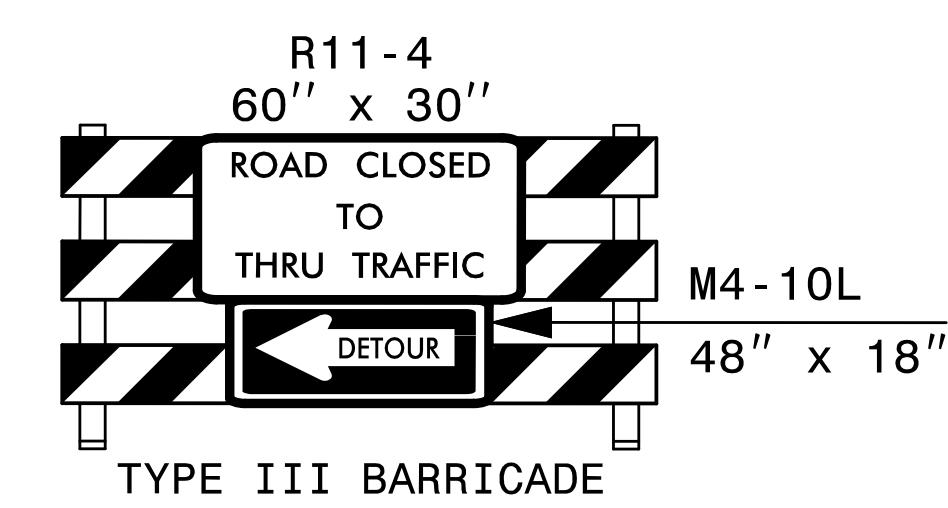


USING NIGHTLY CLOSURES, PERFORM SPAN JACKING OPERATIONS ON BRIDGE.

USE LAW ENFORCEMENT AS NECESSARY, AS PER THE ENGINEER.



(A)



(C)

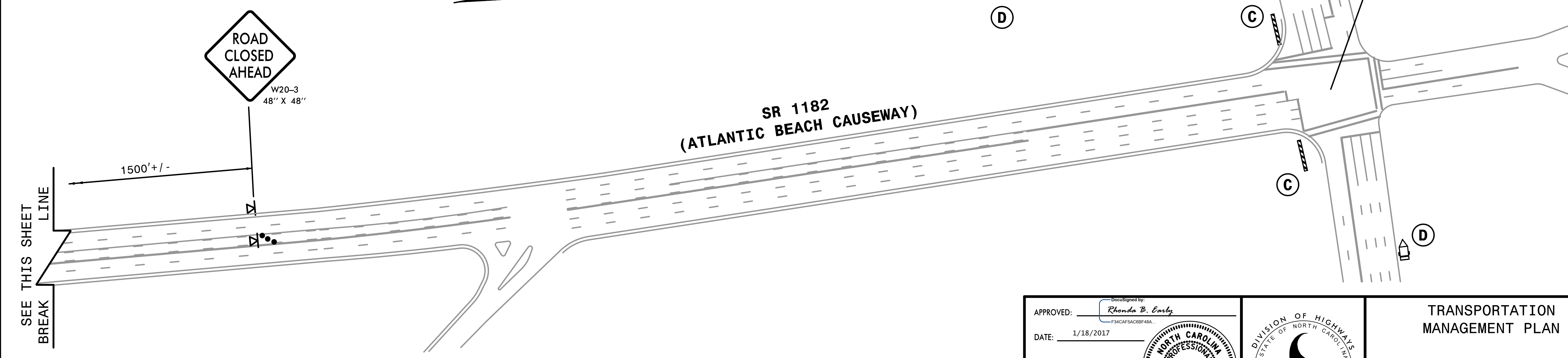
ADVICE FOR ATLANTIC BEACH CAUSEWAY CLOSURE SHALL BE PLACED TWO WEEKS PRIOR TO CLOSURE.

USE DURING CLOSURE		USE PRIOR TO CLOSURE	
MESSAGE NO. 1	MESSAGE NO. 2	MESSAGE NO. 1	MESSAGE NO. 2
ATL BCH BRIDGE CLOSED	USE NC 24W TO NS58S	BRIDGE CLOSED TO XX/XX/XX	MIDNIGHT TO 4 AM
CHANGEABLE MESSAGE SIGN		CHANGEABLE MESSAGE SIGN	

PLACE AS DIRECTED BY THE ENGINEER.

(D)

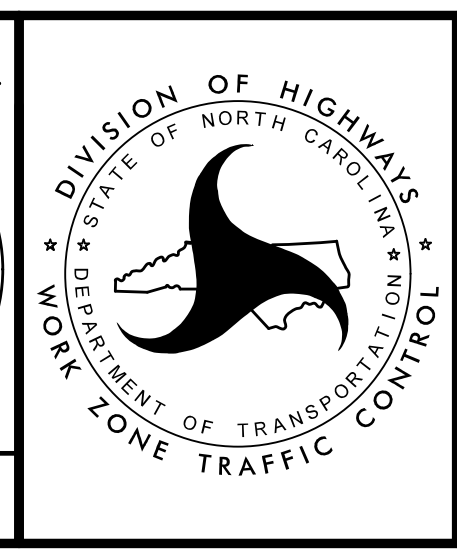
LAW ENFORCEMENT TO BE USED AS DIRECTED BY THE ENGINEER



3:59:58 PM
\\B-5938_tc_pid5_r_d_closure.dgn
HNTB

HNTB
HNTB NORTH CAROLINA, P.C.
343 E. Six Forks Road, Suite 200
Raleigh, North Carolina 27609
NC License No: C-1554

APPROVED: *Rhonda B. Early*
DATE: 1/18/2017
SEAL
DOCUMENT NOT CONSIDERED FINAL
UNLESS ALL SIGNATURES COMPLETED



TRANSPORTATION
MANAGEMENT PLAN

PHASE I, ROAD
CLOSURE DETAIL